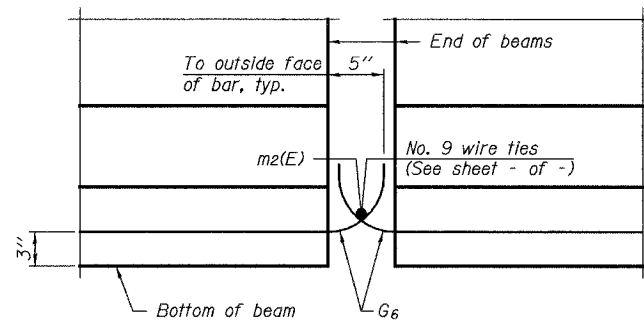


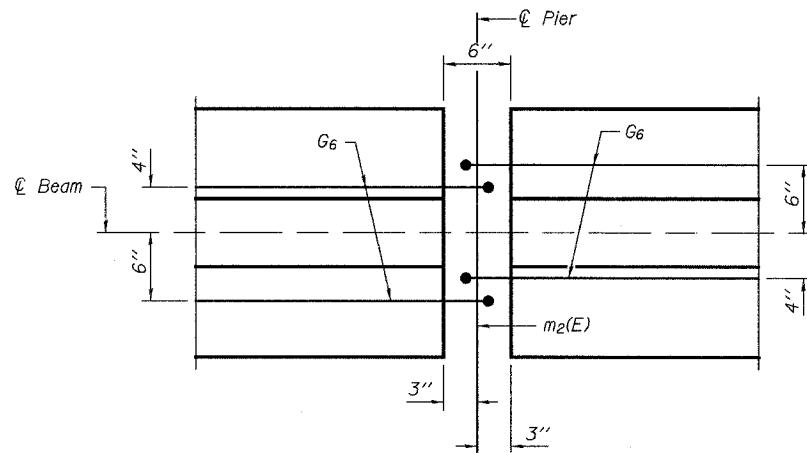
STATE OF ILLINOIS
DEPARTMENT OF TRANSPORTATION

ROUTE NO.	SECTION	COUNTY	TOTAL SHEETS	SHEET NO.
F.A.U. 3887	06-00214-06-BR	KANE	55	26
FED. ROAD DIST. NO. 7	ILLINOIS	FED. AID PROJECT-	CONTRACT NO. 83923	

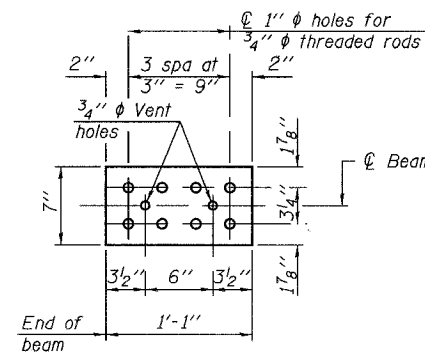
SHEET NO. 11
25 SHEETS



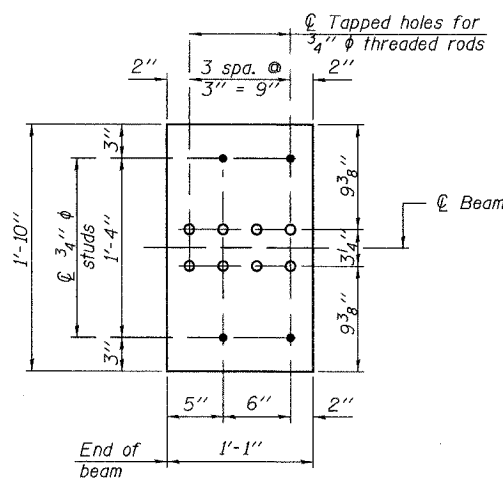
ELEVATION OF BEAM AT PIER



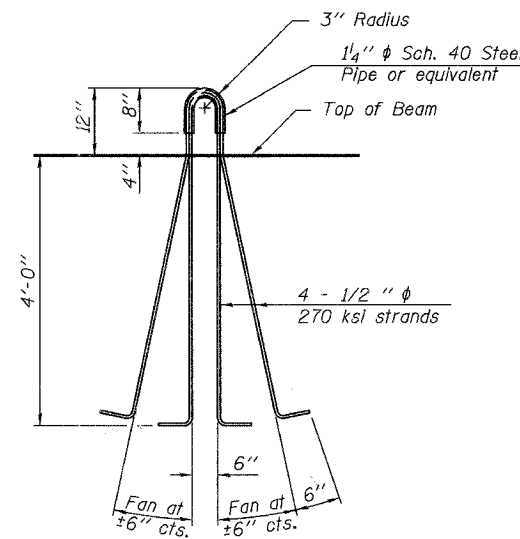
PLAN OF BEAM AT PIER



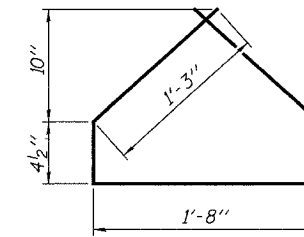
TOP PLATE



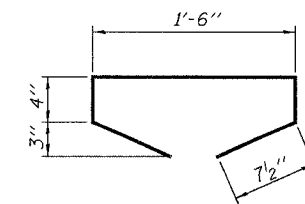
BOTTOM PLATE



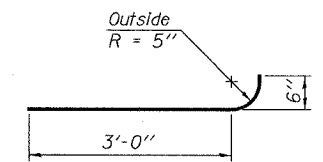
LIFTING LOOP DETAIL



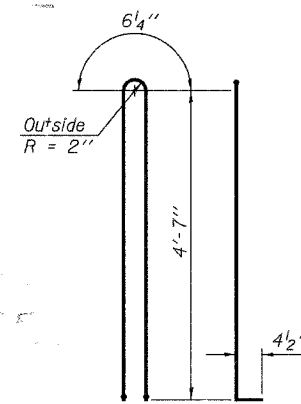
BAR G4



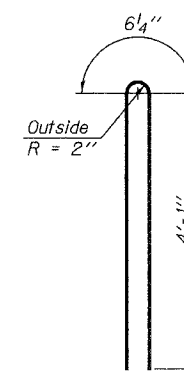
BAR G5



BAR G6



BAR G1



BAR G2

BILL OF MATERIAL

Item	Unit	Total
Furnishing and Erecting Precast Prestressed Concrete I-Beams, 54"	Ft.	1002.5

See Sheet 18 of 24 for Staining Concrete Surface Details for fascia beams.

NOTES

Inserts for 3/4" ϕ threaded dowel rods, when specified, are to be two strut, coil type for interior beams and single coil, flared loop type for exterior beams.
 Prestressing steel shall be uncoated high strength, low relaxation 7-wire strand, Grade 270.
 The nominal diameter shall be 1/2" and the nominal cross-sectional area shall be 0.153 sq. in.
 Non-prestressing steel shall conform to ASTM A 706 (IL MOD), Grade 60.
 A minimum 2 1/2" ϕ lifting pin shall be used to engage the lifting loops during handling.
 Cut G6 bars when necessary to maintain 1/2" clearance.
 The bottom plates and studs shall be galvanized according to AASHTO M11.
 Threaded rods shall be ASTM F 1554 Grade 55.
 The cut strands at each beam end shall be given two coats of zinc dust spray or paint meeting the requirements of ASTM A 780. The zinc dust spray or paint shall be applied before corrosion appears and allowed to dry according to the manufacturer's specifications prior to another coat of zinc. A concrete sealer meeting the requirements of Section 587 of the Standard Specifications shall be applied to all portions of the I-beam or Bulb-T beam, except the top surface of the top flange and the bottom surface of the bottom flange, starting at each beam end and extending out a distance of 54 inches. The sealer shall be applied after visible crack growth has subsided. This work shall be performed by the producer and included with the cost of the beam.

\$DATE\$ \$TIME\$

\$FILE\$

DESIGNED	ASL
CHECKED	NPP
DRAWN	SOI
CHECKED	NPP

PI-4-54D 12-21-06

URS
100 South Wacker Drive,
Suite 500
Chicago, IL 60606
(312) 939-1000

REVISIONS	
NAME	DATE

ILLINOIS DEPARTMENT OF TRANSPORTATION
ILLINOIS ROUTE 31 OVER NEW STEARNS ROAD
KANE COUNTY

PPC I-BEAM DETAILS

F.A.U. 3887
STATION 113+61.11
SCALE:

SECTION 06-00214-06-BR
STRUCTURE NO. 045-2031
DATE: 00/00/2007