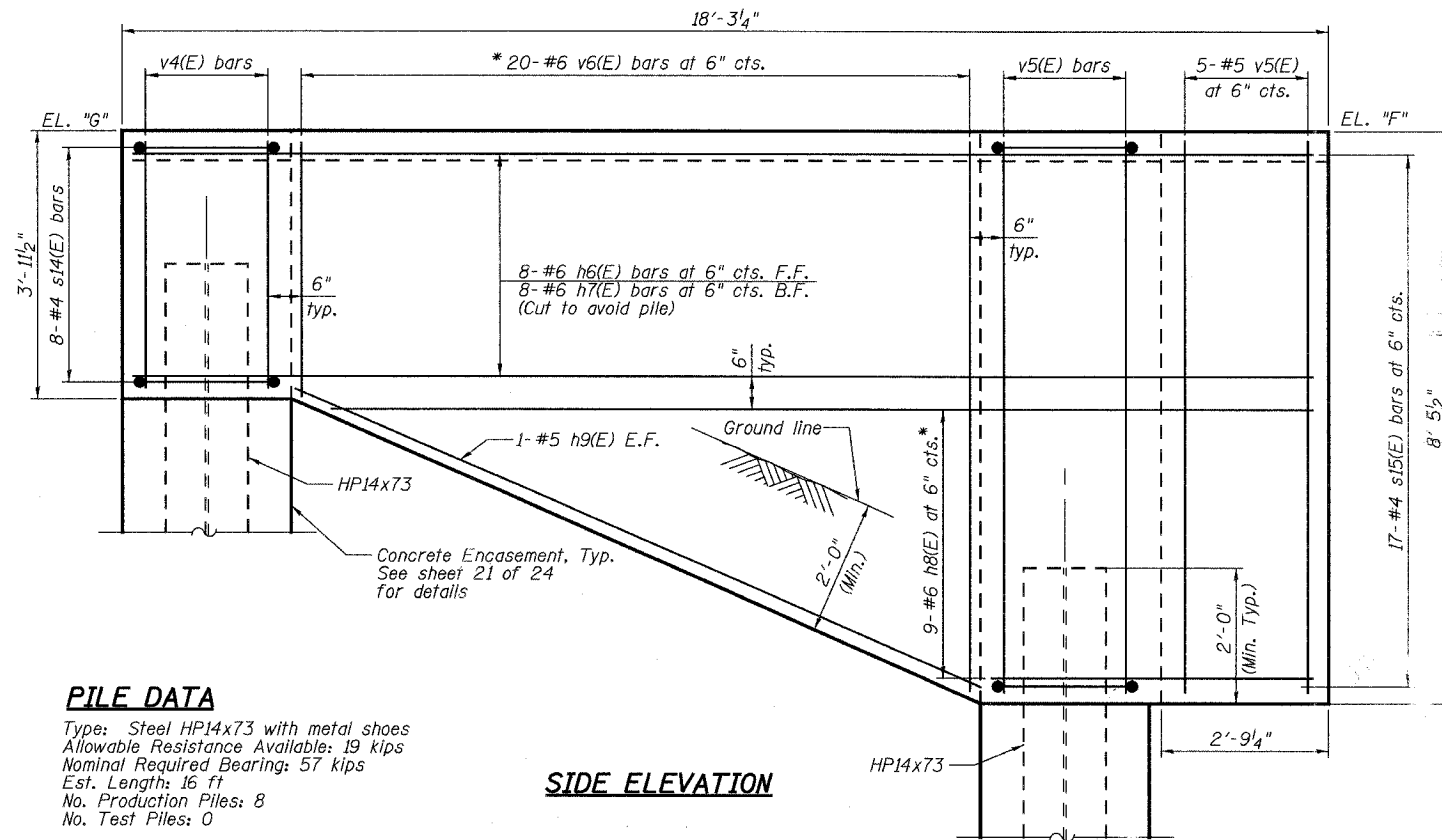


STATE OF ILLINOIS  
DEPARTMENT OF TRANSPORTATION

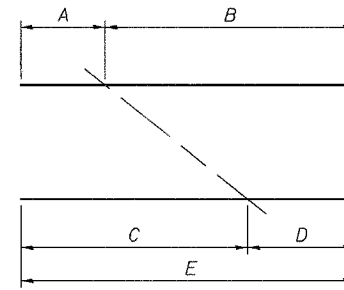
ROUTE NO.	SECTION	COUNTY	TOTAL SHEETS	SHEET NO.
F.A.U. 3887	06-00214-06-BR	KANE	55	31
FED. ROAD DIST. NO. 7		ILLINOIS	FED. AID PROJECT-	
CONTRACT NO. 83923				

SHEET NO. 16  
25 SHEETS



**PILE DATA**

Type: Steel HP14x73 with metal shoes  
 Allowable Resistance Available: 19 kips  
 Nominal Required Bearing: 57 kips  
 Est. Length: 16 ft  
 No. Production Piles: 8  
 No. Test Piles: 0



**BAR LENGTHS**

Bar	A	B	C	D	E	F	G
v6(E)	3'-4"	7'-5"	7'-5"	3'-4"	10'-9"	20	4
h8(E)	2'-6"	11'-11"	11'-9"	2'-8"	14'-5"	9	4

F=No. of bars  
G=No. of sets

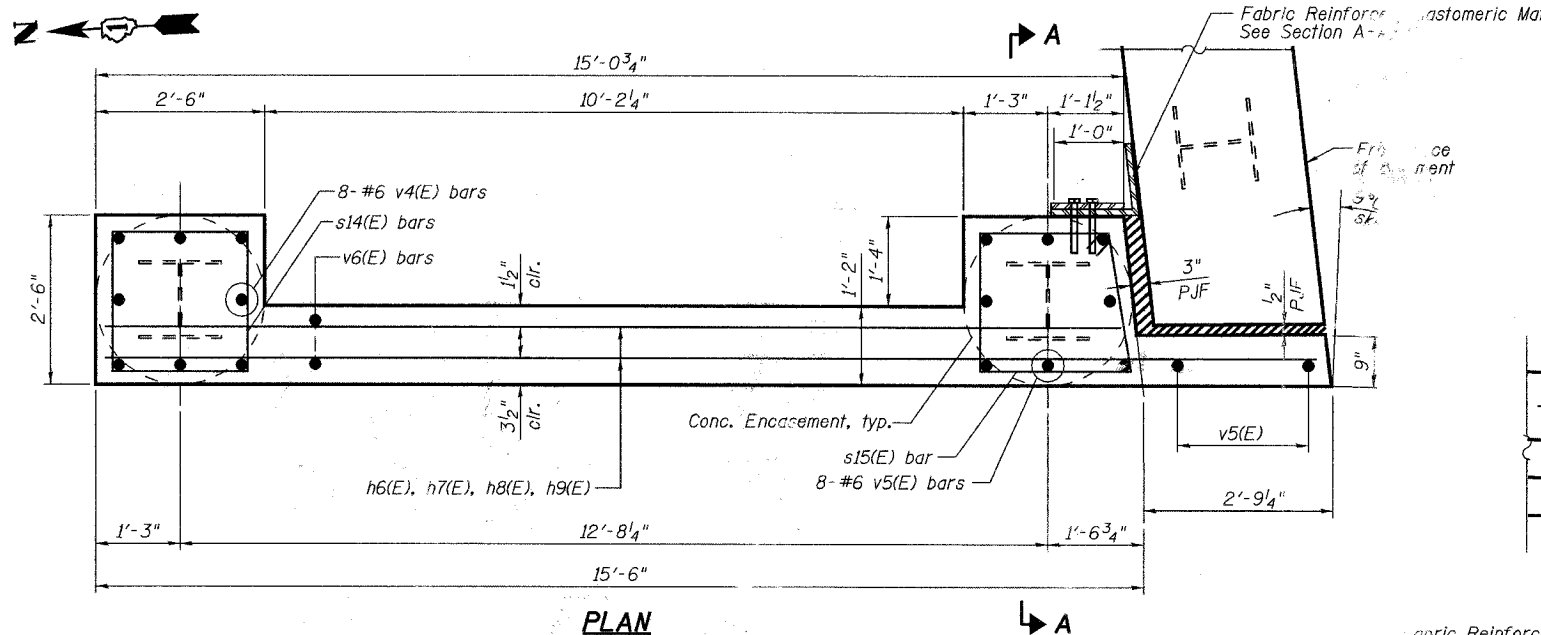
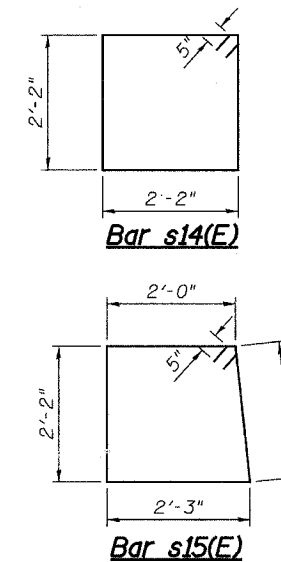
\* Order v6(E) & h8(E) bars full length. Cut to fit as shown and use remainder of bars in other face.  
 h8(E) B and D lengths are to be used in the front face.

**WINGWALL ELEVATION TABLE**

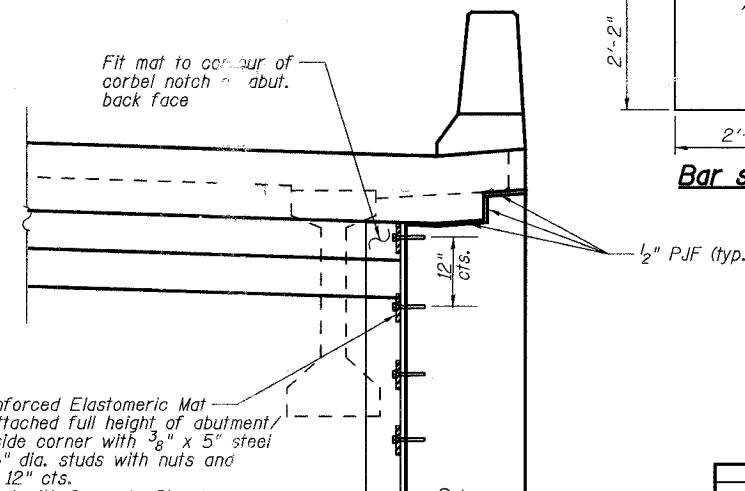
Location	El. "F"	El. "G"
NW	760.63	761.01
NE	761.99	762.47
SW	756.60	756.24
SE	758.10	757.86

**\*\* BILL OF MATERIAL**

Bar	No.	Size	Length	Shape
b3(E)	12	#5	15'-3"	
d(E)	68	#5	5'-7"	
d(E)	68	#5	8'-4"	
e11(E)	6	#4	15'-0"	
e14(E)	10	#4	15'-6"	
e15(E)	6	#4	15'-5"	
e16(E)	2	#8	15'-4"	
e17(E)	10	#4	14'-11"	
e18(E)	2	#8	15'-1"	
h6(E)	32	#6	17'-7"	
h7(E)	32	#6	17'-5"	
h8(E)	36	#6	16'-11"	
h9(E)	8	#6	11'-3"	
s14(E)	32	#4	9'-6"	
s15(E)	68	#4	9'-5"	
v4(E)	32	#6	3'-7"	
v5(E)	52	#6	8'-1"	
v6(E)	80	#6	11'-7"	
Structure Excavation	Cu. Yd.		100	
Concrete Structures	Cu. Yd.		33.1	
Concrete Encasement	Cu. Yd.		4.4	
Reinforcement Bars, Epoxy Coated	Pound		7,230	
Furnishing Steel Piles HP14x73	Foot		128	
Driving Piles	Foot		128	
Pile Shoes	Each		8	



The NW Wingwall is shown  
The Wingwalls at other 3 Locations are similar.



Fabric Reinforced Elastomeric Mat 1/4" wide attached full height of abutment/wingwall inside corner with 3/8" x 5" steel plate and 1/2" dia. studs with nuts and washers at 12" cts. Not included with Concrete Structures

- Notes:
- See sheet 18 of 25 for Architectural Form Liner Surface and Staining Concrete Surface Details.
  - See sheet 17 of 25 for section through the wall.

DESIGNED	ASL
CHECKED	NPP
DRAWN	DYS
CHECKED	NPP

REVISIONS	NAME	DATE

ILLINOIS DEPARTMENT OF TRANSPORTATION  
ILLINOIS ROUTE 31 OVER NEW STEARNS ROAD  
KANE COUNTY  
**ABUTMENT WINGWALL DETAILS**

F.A.U. 3887 STATION 113+61.11 SCALE:  
SECTION 06-00214-06-BR STRUCTURE NO. 045-2031 DATE: 00/00/2007

**URS**  
100 South Wacker Drive, Suite 500  
Chicago, IL 60606  
(312) 939-1000