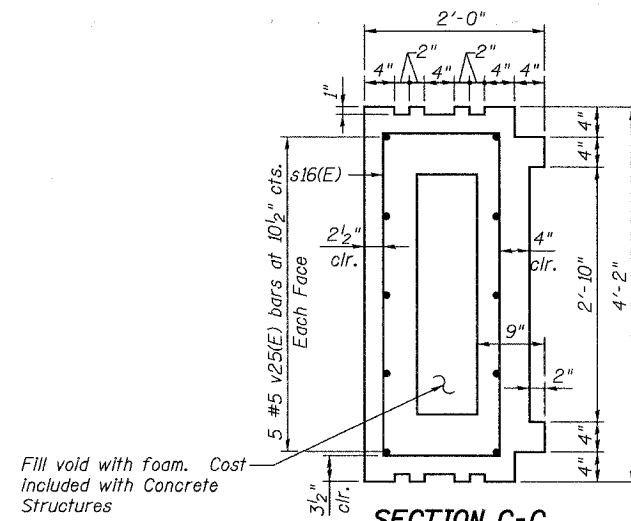


STATE OF ILLINOIS
DEPARTMENT OF TRANSPORTATION

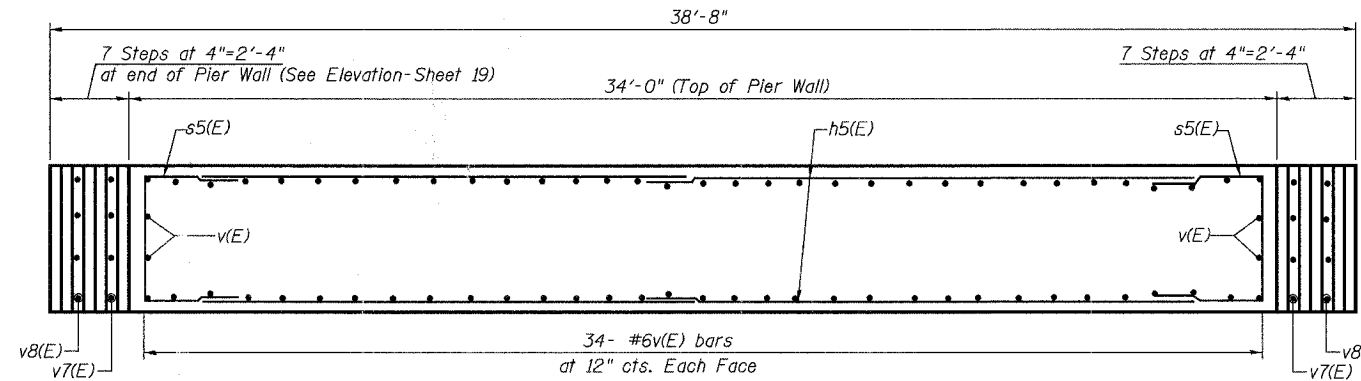
ROUTE NO.	SECTION	COUNTY	TOTAL SHEETS	SHEET NO.
F.A.U. 3887	06-00214-06-BR	KANE	55	35
FED. ROAD DIST. NO. 7		ILLINOIS	FED. AID PROJECT-	

SHEET NO. 20
25 SHEETS

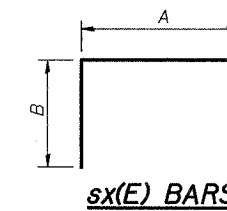
CONTRACT NO. 83923



SECTION C-C
1"=1'-0"

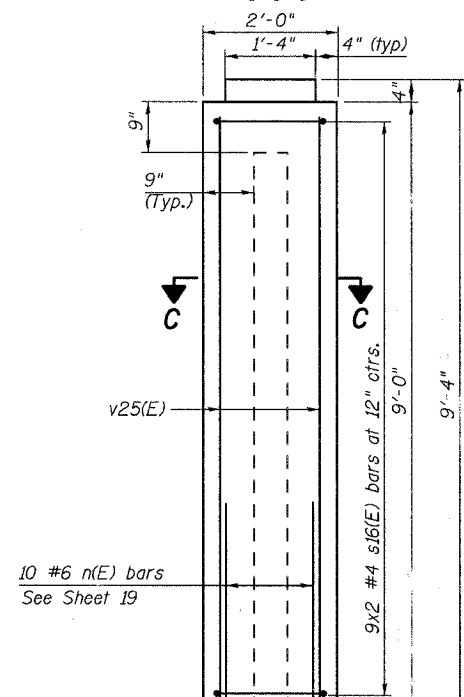


SECTION A-A

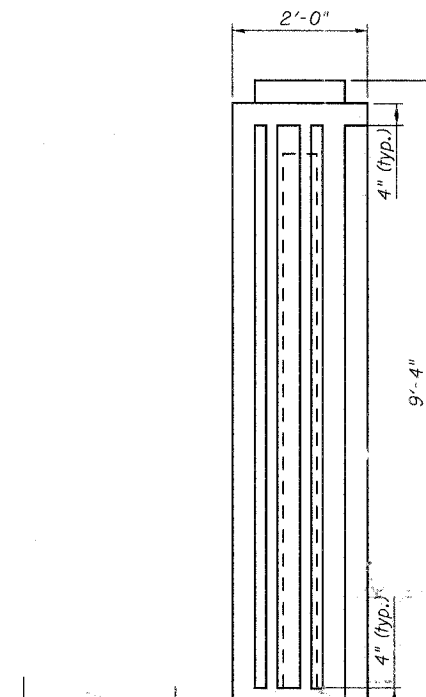


A & B DIMENSIONS

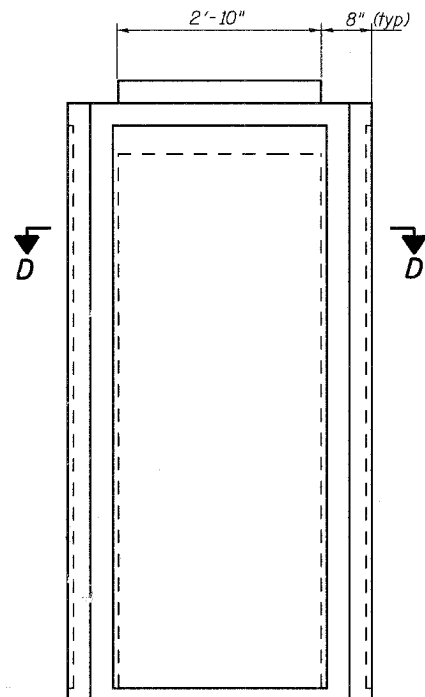
Bar	A	B
s(E)	3'-10"	1'-10"
s1(E)	3'-10"	2'-0"
s2(E)	3'-10"	2'-4"
s5(E)	3'-10"	2'-10"
s6(E)	3'-10"	3'-0"
s7(E)	3'-10"	5'-2"
s8(E)	3'-10"	2'-4"
s16(E)	1'-3"	2'-5"



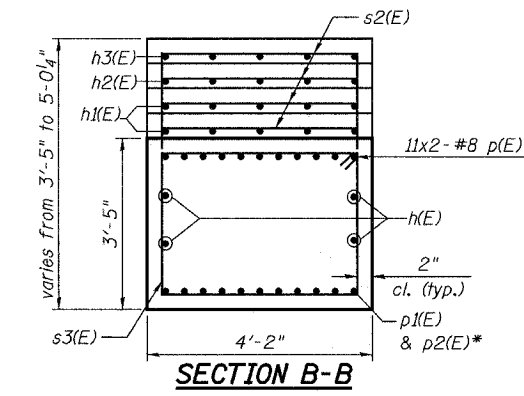
C



END CAP FRONT ELEVATION

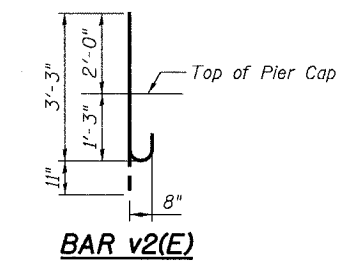
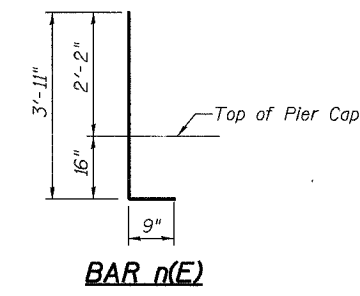
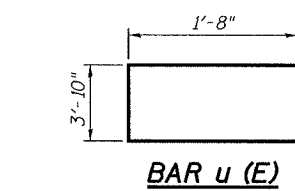
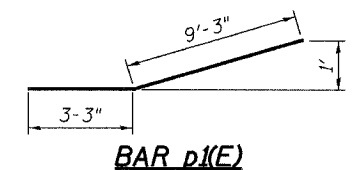
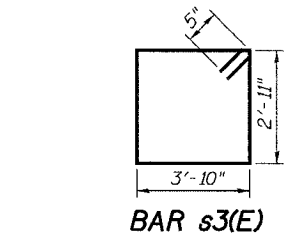


SIDE ELEVATION



SECTION B-B

* Equally spaced in 1 row at bottom of cap.



Notes:
1. See Sheet 19 for locations of sections A-A and B-B

\$DATE\$ \$TIME\$

DESIGNED	JRT
CHECKED	NPP
DRAWN	SOI
CHECKED	NPP

REVISIONS	
NAME	DATE

ILLINOIS DEPARTMENT OF TRANSPORTATION
ILLINOIS ROUTE 31 OVER NEW STEARNS ROAD
KANE COUNTY

PIER SECTIONS

F.A.U. 3887
STATION 113+61.11
SCALE:

SECTION 06-00214-06-BR
STRUCTURE NO. 045-2031
DATE: 00/00/2007

URS
100 South Wacker Drive,
Suite 500
Chicago, IL 60606
(312) 939-1000

