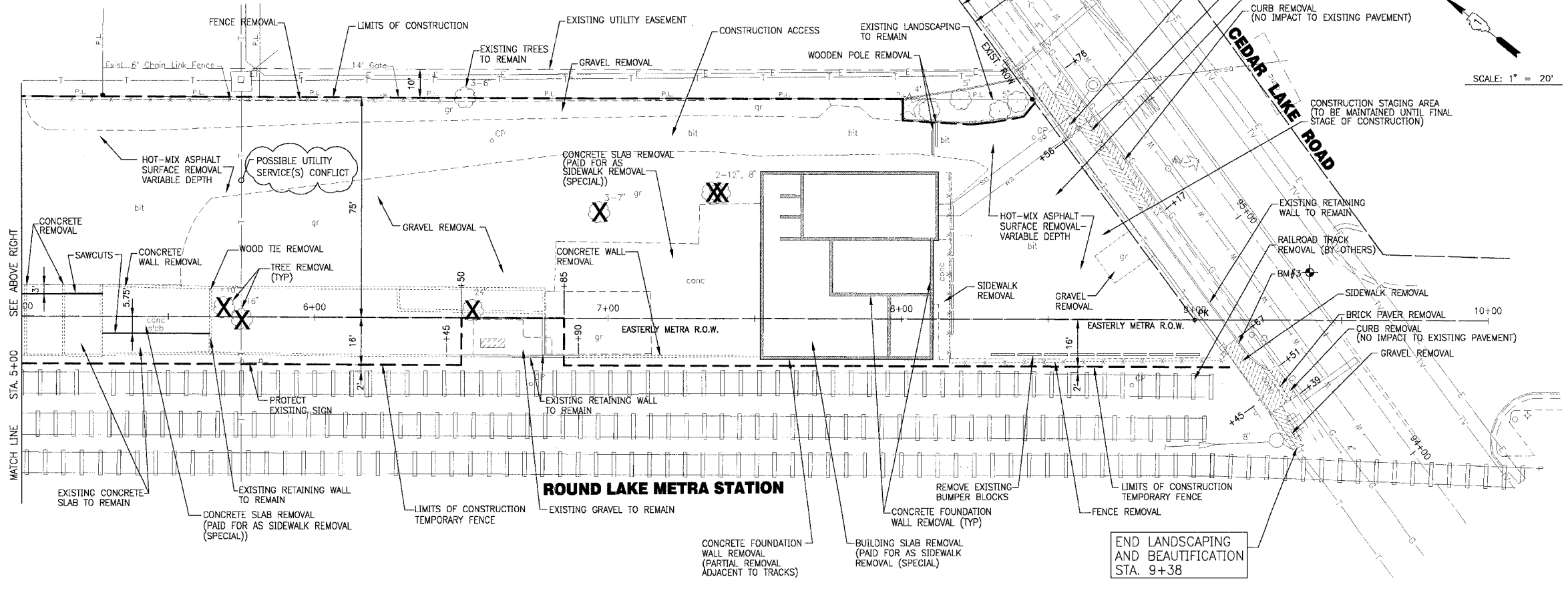
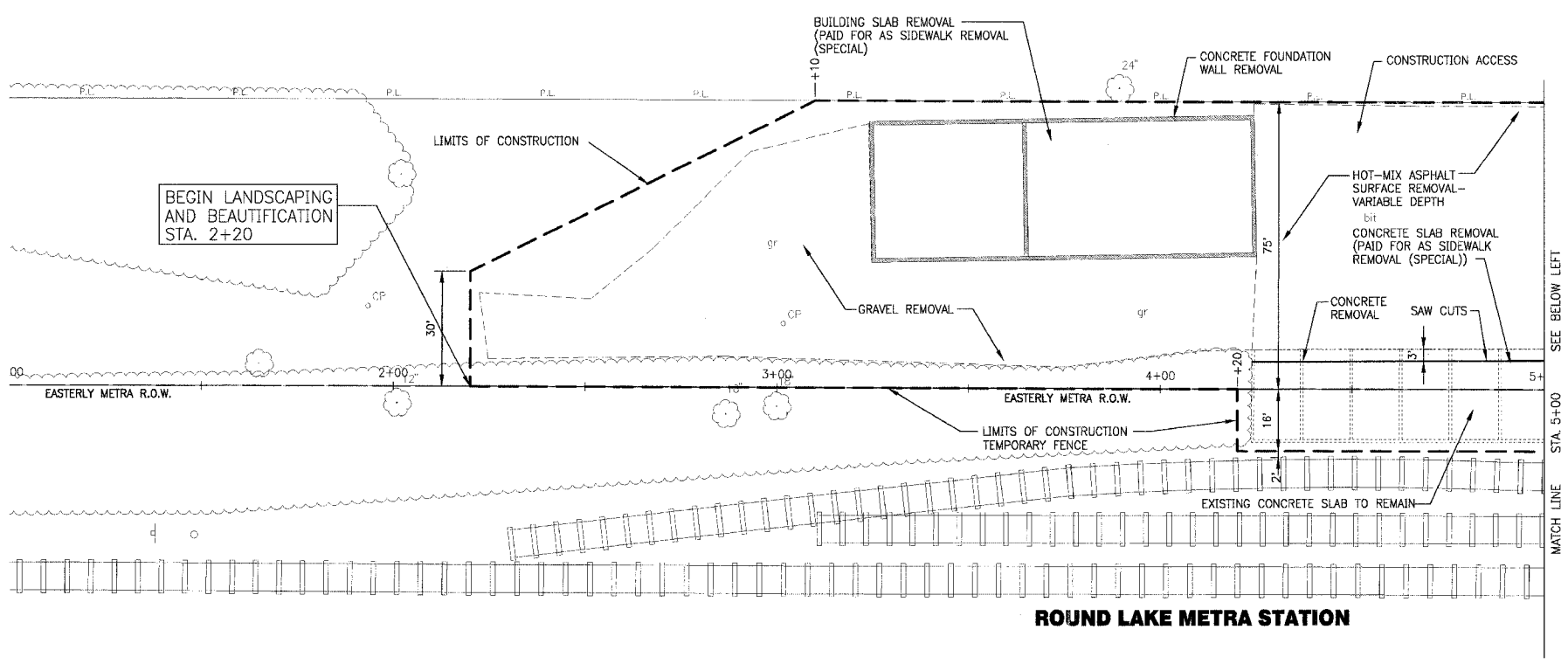


FA ROUTE NO.	SECTION	COUNTY	TOTAL SHEETS	SHEET NO.
06-00028-00-LS	LAKE	LAKE	18	6
STA.	TO STA.		FED. ROAD DIST. NO.	FED AID PROJECT
C-91-150-07	ILLINOIS		C-91-150-07	TE-00D1(757)
CONTRACT NO.: 83930				



I:\PROJECTS\060749\112P\DWG5\060749APL\DWG - DEMO-316
 Plotted: 5-10-07 @ 8:24am By: 560llar
 Copyright © 2006, By Baxter & Woodman, Inc.
 State of Illinois - Professional Design Firm
 License No. - 08-001121 - Expires 4-30-07

CONSULTANTS	REV. NO.	DATE	DESCRIPTION
	1	4/4/07	VILLAGE/IDOT/LCDOT/METRA REVIEW
	2	5/10/07	VILLAGE/IDOT/LCDOT/METRA REVIEW

* - REFER TO EQUIPMENT MANUFACTURER'S SHOP DRAWINGS

BAXTER & WOODMAN
 Consulting Engineers

Baxter & Woodman
 Crystal Lake, Illinois 815.459.1800
 Burlington, Wisconsin 262.763.7834
 Mokena, Illinois 708.476.2090
 DeKalb, Illinois 815.787.3111
 Graystone, Illinois 847.223.5098
 Deerfield, Illinois 815.489.1551
 Plainfield, Illinois 815.609.7455

**VILLAGE OF ROUND LAKE, ILLINOIS
 METROPOLITAN CORRIDOR BEAUTIFICATION
 AND PEDESTRIAN ACCESS ACCOMMODATION PROJECT**

**METROPOLITAN CORRIDOR
 DEMOLITION PLAN
 STA. 1+00 TO STA. 10+00**

DESIGNED BY	MWP	SCALE	HORIZ: 1"=20'
DRAWN BY	JKB	PROJECT NO.	060749
CHECKED BY	MWP	SHEET NO.	6 OF 18
DATE	2-09-07		