

FA. ROUTE NO.	SECTION	COUNTY	TOTAL SHEETS	SHEET NO.
06-00028-00-LS	LAKE	LAKE	18	8
STA.	TO STA.	FED. ROAD DIST. NO.	ILLINOIS	FED AID PROJECT
C-91-150-07				TE-0001(757)
CONTRACT NO.: 83930				

SEDIMENTATION AND EROSION CONTROL NOTES

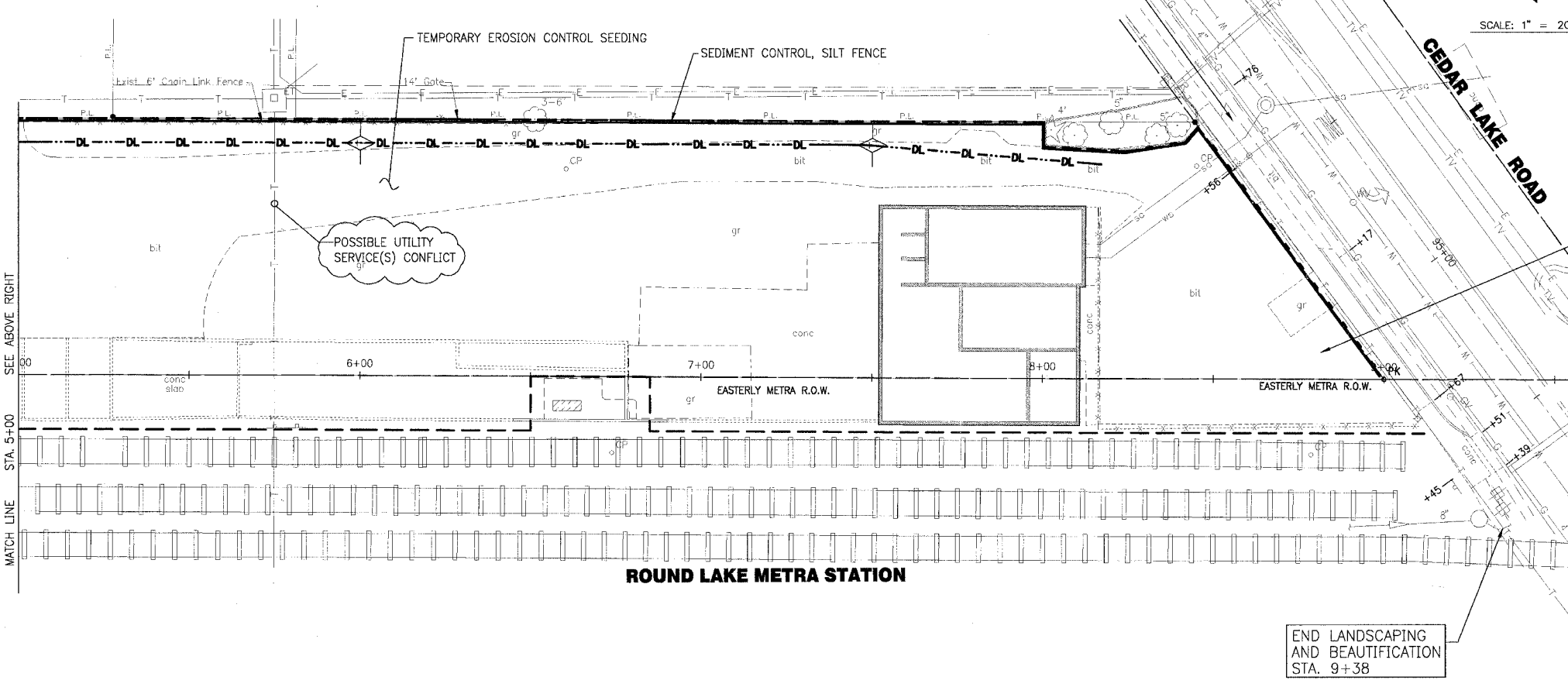
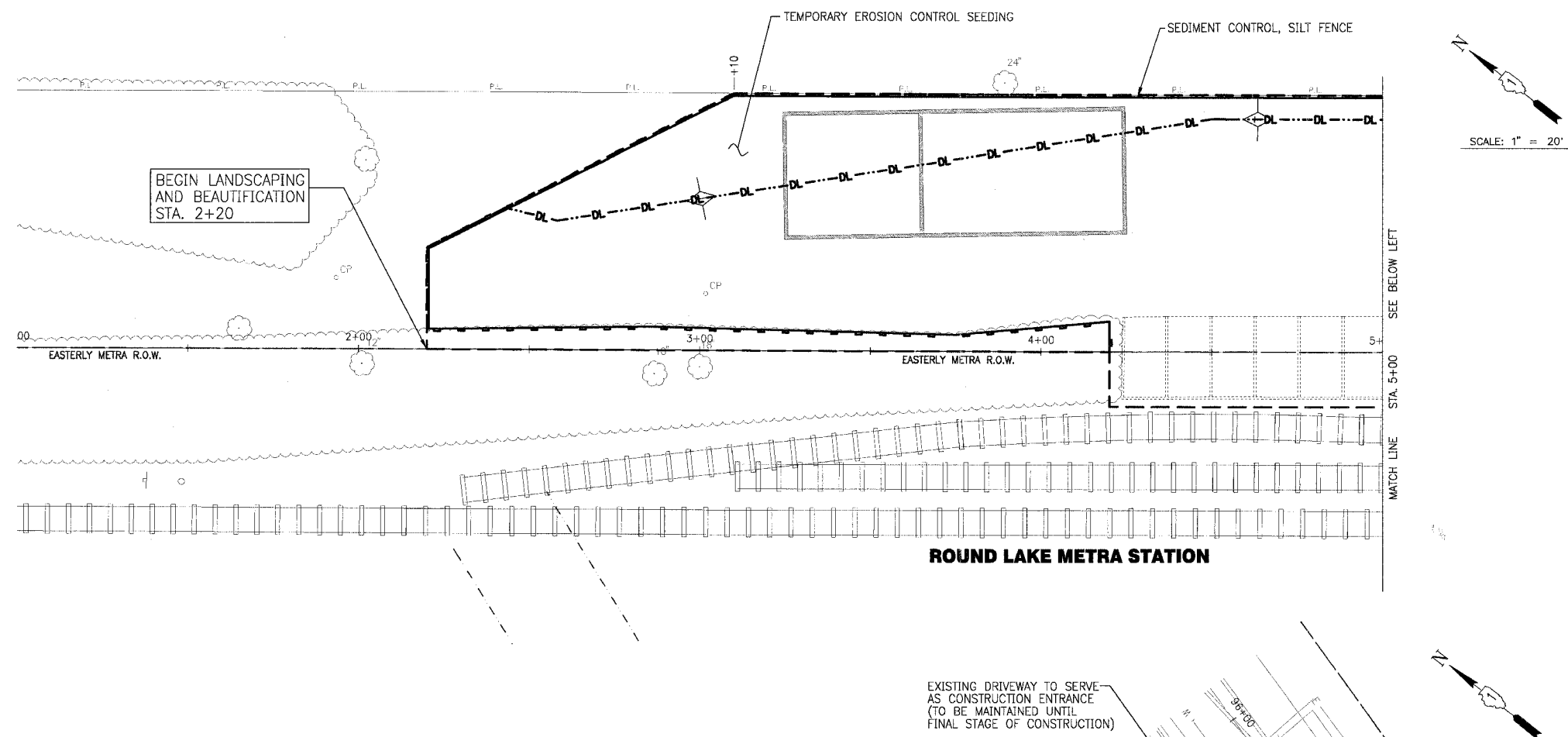
- SOIL EROSION AND SEDIMENT CONTROL FEATURES SHALL BE CONSTRUCTED PRIOR TO THE COMMENCEMENT OF UPLAND DISTURBANCE.
- ALL STORM SEWER FACILITIES THAT ARE OR WILL BE FUNCTIONING DURING CONSTRUCTION SHALL BE PROTECTED, FILTERED, OR OTHERWISE TREATED TO REMOVE SEDIMENT.
- ALL TEMPORARY AND PERMANENT EROSION CONTROL MEASURES MUST BE MAINTAINED AND REPAIRED AS NEEDED. THE GENERAL CONTRACTOR WILL BE RESPONSIBLE FOR INSPECTION AND REPAIR DURING CONSTRUCTION.
- SOIL DISTURBANCE SHALL BE CONDUCTED IN SUCH A MANNER AS TO MINIMIZE EROSION. SOIL STABILIZATION MEASURES SHALL CONSIDER THE TIME OF YEAR, SITE CONDITIONS AND THE USE OF TEMPORARY OR PERMANENT MEASURES.
- SOIL EROSION AND SEDIMENT CONTROL FEATURES SHALL BE CONSTRUCTED PRIOR TO THE COMMENCEMENT OF HYDROLOGIC DISTURBANCE OF UPLAND AREAS.
- DISTURBED AREAS SHALL BE STABILIZED WITH TEMPORARY OR PERMANENT MEASURES WITHIN 14 CALENDAR DAYS OF THE END OF ACTIVE HYDROLOGIC DISTURBANCE, OR REDISTURBANCE.
- AREAS OR EMBANKMENTS HAVING SLOPES GREATER THAN OR EQUAL TO 3H:1V, AND APPROVED BY THE ENFORCEMENT OFFICER, SHALL BE STABILIZED WITH EXCELSIOR BLANKET (SPECIAL) IN COMBINATION WITH SEEDING, CLASS 1.
- EXCELSIOR BLANKET (SPECIAL) SHALL BE REQUIRED ON ALL INTERIOR DETENTION BASIN SIDE SLOPES BETWEEN NORMAL WATER LEVEL AND HIGH WATER LEVEL.
- ALL STORM SEWERS THAT ARE OR WILL BE FUNCTIONING DURING CONSTRUCTION SHALL BE PROTECTED, BY AN APPROPRIATE SEDIMENT CONTROL MEASURE.
- ALL TEMPORARY EROSION AND SEDIMENT CONTROL MEASURES SHALL BE REMOVED WITHIN 30 DAYS AFTER FINAL SITE STABILIZATION IS ACHIEVED OR AFTER THE TEMPORARY MEASURES ARE NO LONGER NEEDED.
- ALL TEMPORARY AND PERMANENT EROSION CONTROL MEASURES MUST BE MAINTAINED AND REPAIRED AS NEEDED. THE PROPERTY OWNER SHALL BE ULTIMATELY RESPONSIBLE FOR MAINTENANCE AND REPAIR.
- A STABILIZED MAT OF AGGREGATE UNDERLAIN WITH FILTER CLOTH (OR OTHER APPROPRIATE MEASURE) SHALL BE LOCATED AT ANY POINT WHERE TRAFFIC WILL BE ENTERING OR LEAVING A CONSTRUCTION SITE TO OR FROM A PUBLIC RIGHT-OF-WAY, STREET, ALLEY OR PARKING AREA. ANY SEDIMENT OR SOIL REACHING AN IMPROVED PUBLIC RIGHT-OF-WAY, STREET, ALLEY OR PARKING AREA SHALL BE REMOVED BY SCRAPING OR STREET CLEANING AS ACCUMULATIONS WARRANT AND TRANSPORTED TO A CONTROLLED SEDIMENT DISPOSAL AREA. THE COSTS ASSOCIATED WITH THESE ITEMS SHALL BE INCLUDED IN THE COST OF THE CONTRACT.
- SOIL STOCKPILES SHALL NOT BE LOCATED IN A FLOOD PRONE AREA OR A DESIGNATED BUFFER PROTECTING WATERS OF THE UNITED STATES OR ISOLATED WATERS OF LAKE COUNTY.
- IF DEWATERING SERVICES ARE USED, ADJOINING PROPERTIES AND DISCHARGE LOCATIONS SHALL BE PROTECTED FROM EROSION. DISCHARGES SHALL BE ROUTED THROUGH AN EFFECTIVE SEDIMENT CONTROL MEASURE (e.g. SEDIMENT TRAP, SEDIMENT BASIN, OR OTHER APPROPRIATE MEASURES.)
- THE EROSION CONTROL MEASURES INDICATED ON THE PLANS ARE THE MINIMUM REQUIREMENTS. ADDITIONAL MEASURES MAY BE REQUIRED, AS DIRECTED BY THE ENGINEER OR GOVERNING AGENCY.
- SEEDING, CLASS 1 WITH SLOPE PROTECTION WILL BE USED ON ALL DISTURBED AREAS.

SCHEDULE OF EROSION CONTROL QUANTITIES

SEDIMENT CONTROL, SILT FENCE	FOOT	991
TEMPORARY DITCH CHECK	EACH	4
TEMPORARY EROSION CONTROL SEEDING	POUND	124

LEGEND

- TEMPORARY DITCH CHECKS
- SEDIMENT CONTROL, SILT FENCE



11.001.060749 - TERRY DRKS 060749.DWG - EROS-SHB
 PLOT DATE: 5/10/07 9:20 AM By: J. Woodman
 Copyright © 2006, By: Baxter & Woodman, Inc.
 State of Illinois - Professional Design Firm
 License No. - 184-001121 - Expires 4-10-07

CONSULTANTS	REV. NO.	DATE	DESCRIPTION
	1	4/4/07	VILLAGE/IDOT/LCDOT/METRA REVIEW
	2	5/10/07	VILLAGE/IDOT/LCDOT/METRA REVIEW

* - REFER TO EQUIPMENT MANUFACTURER'S SHOP DRAWINGS

BAXTER & WOODMAN
 Consulting Engineers

Baxter & Woodman
 Crystal Lake, Illinois 815.459.1200
 Burlington, Massachusetts 262.768.7234
 Mokena, Illinois 708.476.2090
 DeKalb, Illinois 815.797.3111
 Crystal Lake, Illinois 847.228.0088
 Rockford, Illinois 815.489.1551
 Plainfield, Illinois 815.609.7425

**VILLAGE OF ROUND LAKE, ILLINOIS
 METROPOLITAN CORRIDOR BEAUTIFICATION
 AND PEDESTRIAN ACCESS ACCOMMODATION PROJECT**

**METROPOLITAN CORRIDOR
 EROSION AND SEDIMENT CONTROL PLAN
 STA. 1+00 TO STA. 10+00**

DESIGNED BY	MWP	SCALE	HORIZ: 1" = 20'
DRAWN BY	UKB	PROJECT NO.	060749
CHECKED BY	MWP	SHEET NO.	8 OF 18
DATE	2-09-07		