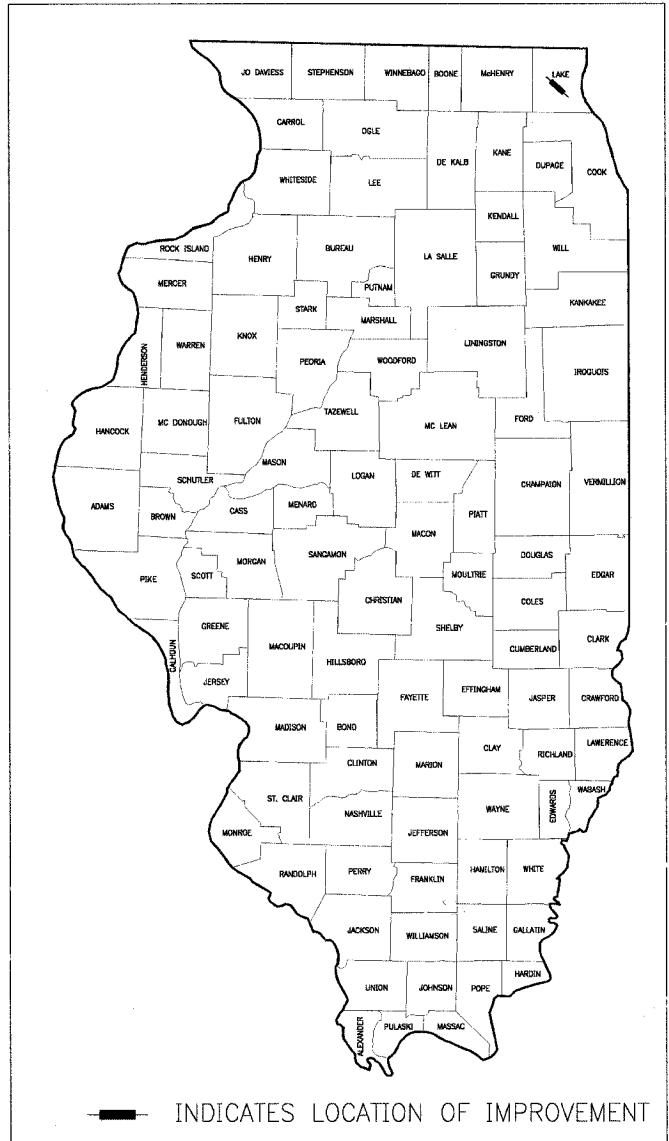


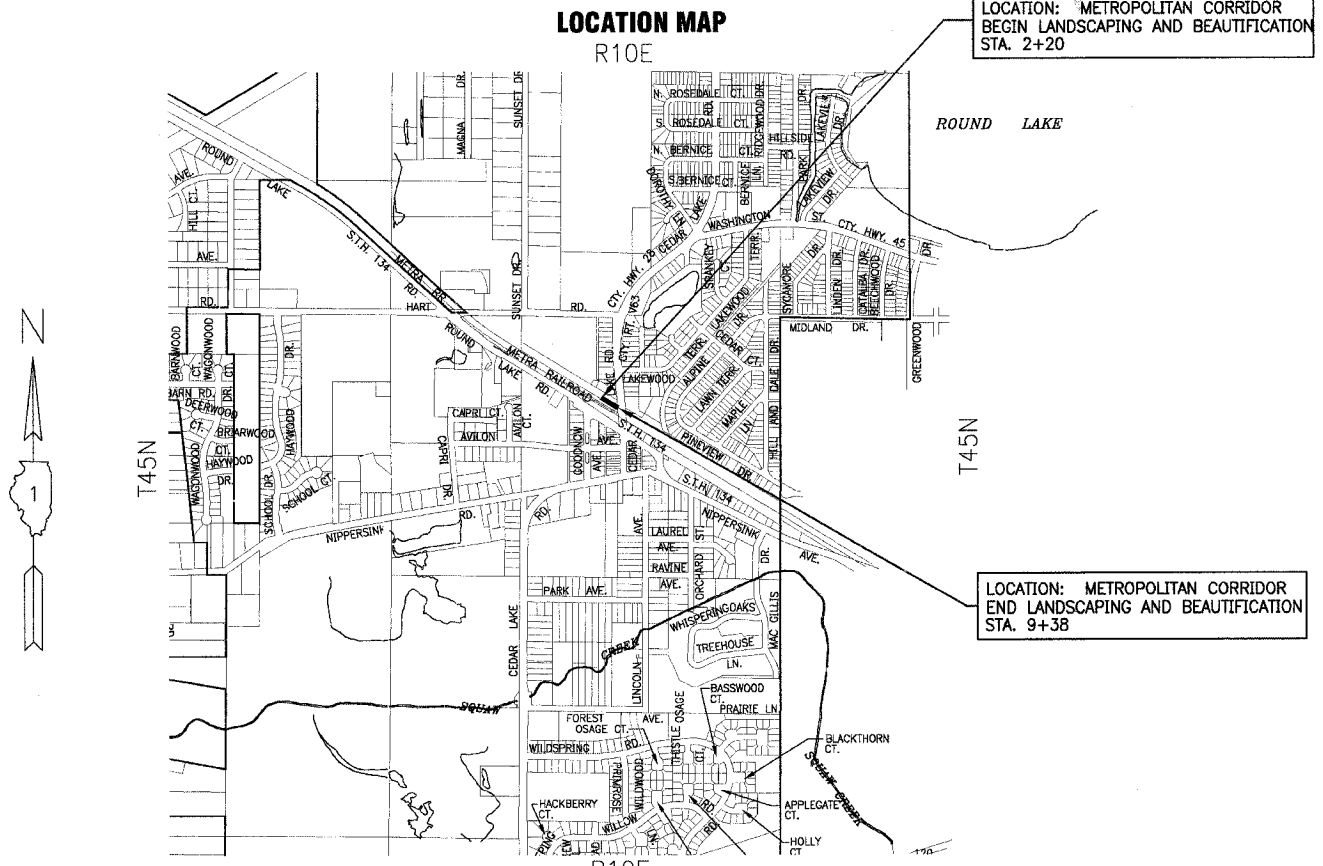
F.A. ROUTE NO.	SECTION	COUNTY	TOTAL SHEETS	SHEET NO.
06-00028-00-LS	LAKE	18	1	
STA.	TO STA.			
FED. ROAD DIST. NO.	ILLINOIS	FED AID PROJECT		
C-91-150-07		TE-00D1 (757)		
CONTRACT NO.: 83930				

INDEX OF SHEETS
SHEET NO. TITLE
SEE SHT. NO. 2 FOR INDEX TO SHEETS

STATE OF ILLINOIS
DEPARTMENT OF TRANSPORTATION
DIVISION OF HIGHWAYS
**PLANS FOR PROPOSED
FEDERAL AID PROJECT**
**METROPOLITAN CORRIDOR BEAUTIFICATION AND
PEDESTRIAN ACCESS ACCOMODATION PROJECT**
NORTHWEST SIDE OF ROUND LAKE METROPOLITAN RAIL RAILROAD STATION
LANDSCAPING AND BEAUTIFICATION
PROJECT NO.: TE-00D1 (757)
SECTION: 06-00028-00-LS
LAKE COUNTY
JOB NO.: C-91-150-07



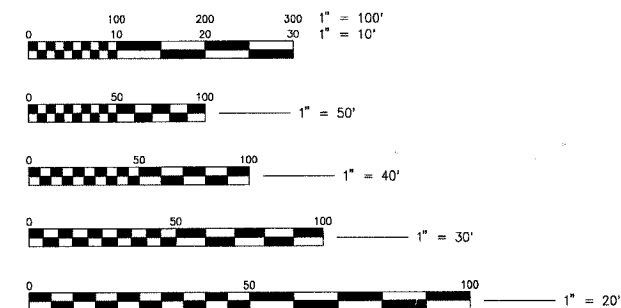
PROJECT LOCATED IN THE VILLAGE OF ROUND LAKE



R10E
T45N
AVON TOWNSHIP
GROSS LENGTH OF IMPROVEMENT = 718 LIN. FT. OR 0.136 MILES
NET LENGTH OF IMPROVEMENT = 718 LIN. FT. OR 0.136 MILES

STANDARD NO. STANDARD
SEE SHT. NO. 2 FOR STANDARDS

CALL JULIE 1-800-892-0123 WITH THE FOLLOWING:
COUNTY =
CITY-TOWNSHIP =
SEC & 1/4 SEC. NO. =
48 HOURS BEFORE YOU DIG EXCLUDING SAT, SUN, & HOLIDAYS



FULL SIZE PLANS HAVE BEEN PREPARED USING STANDARD ENGINEERING SCALES. REDUCED SIZED PLANS WILL NOT CONFORM TO STANDARD SCALES. IN MAKING MEASUREMENTS ON REDUCED SIZE PLANS, THE ABOVE SCALES SHALL BE USED.

CONTRACT NO. 83930

Crystal Lake, Illinois
815.459.1260
(OFFICE WHICH PREPARED PLANS)
Mokena, Illinois
708.478.2090

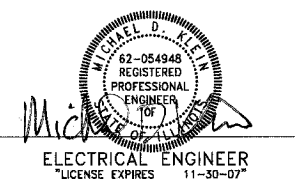
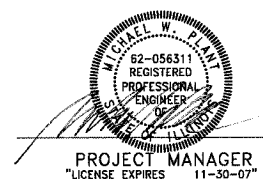
Burlington, Wisconsin
262.763.7834
DeKalb, Illinois
815.787.3111



Grayslake, Illinois
847.223.5088
Rockford, Illinois
815.489.1551

Plainfield, Illinois
815.609.7425
Itasca, Illinois
630.773.1870

BAXTER & WOODMAN, INC.
STATE OF ILLINOIS - PROFESSIONAL DESIGN FIRM
LICENSE NO. - 184-001121 - EXPIRES 4/30/2007



DATE: 4-13-07

STATE OF ILLINOIS
DEPARTMENT OF TRANSPORTATION
DIVISION OF HIGHWAYS

APPROVED 04/11/07
David R. Clark
VILLAGE OF ROUND LAKE
DIRECTOR OF PUBLIC WORKS

PASSED MAY 29, 2007
Chad Cunningham
DISTRICT 1 ENGINEER OF
LOCAL ROADS & STREETS

RELEASING FOR BID
BASED ON LIMITED
REVIEW May 29 2007
Diane O'Keefe
DEPUTY DIRECTOR OF
HIGHWAYS, REGION 1 ENGINEER

I.A. ROULKA 060749 JCP DWG 06/06/07 48-CvrH.dwg - SH1
 Plotted: 4-10-07 @ 5:05pm By: 560kar
 Copyright © 2006, By Baxter & Woodman, Inc.
 State of Illinois - Professional Design Firm
 License No. - 184-001121 - Expires 4-30-07
 I.D.O.T. FEDERAL AID DESIGN ENGINEER: ABICAIL WILGREEN 847-705-4233 SCHAUMBURG, IL.

GENERAL NOTES

- ALL CONSTRUCTION SHALL BE DONE IN ACCORDANCE WITH THE DETAILS IN THE PLANS, THE SPECIAL PROVISIONS INCLUDED IN THE CONTRACT DOCUMENTS, AND THE LATEST EDITION OF THE FOLLOWING STATE OF ILLINOIS SPECIFICATIONS: "THE STANDARD SPECIFICATIONS FOR ROAD AND BRIDGE CONSTRUCTION" (REFERRED TO AS THE "STANDARD SPECIFICATIONS"), THE "SUPPLEMENTAL SPECIFICATIONS AND RECURRING SPECIAL PROVISIONS", THE "STANDARD SPECIFICATIONS FOR TRAFFIC CONTROL ITEMS", THE "MANUAL ON UNIFORM TRAFFIC CONTROL DEVICES FOR STREETS AND HIGHWAYS", THE "MANUAL OF TEST PROCEDURES FOR MATERIALS" AND THE "STANDARD SPECIFICATIONS FOR WATER AND SEWER MAIN CONSTRUCTION IN ILLINOIS".
- THE LOCATIONS OF PUBLIC OR PRIVATE UTILITIES SHOWN ON THE PLANS ARE APPROXIMATE AND THE VILLAGE DOES NOT GUARANTEE THEIR ACCURACY. THE CONTRACTOR SHALL HAVE THE RESPECTIVE UTILITY COMPANIES FIELD LOCATE ALL THEIR FACILITIES PRIOR TO BEGINNING CONSTRUCTION. THE CONTRACTOR SHALL ALSO VERIFY THE DEPTHS OF THE EXISTING UTILITIES IF NECESSARY. ANY RELOCATION OR LOWERING OF UTILITIES SHALL BE COORDINATED BY THE CONTRACTOR.
- THE CONTRACTOR SHALL BE RESPONSIBLE FOR THE PROTECTION OF ALL UNDERGROUND OR SURFACE UTILITIES EVEN THOUGH THEY MAY NOT BE SHOWN ON THE PLANS. ANY UTILITY THAT IS DAMAGED DURING CONSTRUCTION SHALL BE REPAIRED OR REPLACED AT THE CONTRACTOR'S EXPENSE TO THE SATISFACTION OF THE ENGINEER OR VILLAGE.
- THE CONTRACTOR SHALL NOTIFY THE VILLAGE DIRECTOR OF PUBLIC WORKS AT LEAST 48 HOURS IN ADVANCE OF BEGINNING WORK TO OBTAIN VILLAGE UTILITY LOCATIONS AND SHALL COORDINATE ALL CONSTRUCTION OPERATIONS WITH THE ENGINEER.
- MATERIALS RESULTING FROM THE REMOVAL OF PAVEMENT, DRIVEWAYS, CURB AND GUTTER, HOT-MIX ASPHALT SURFACES, ETC. SHALL BE REMOVED AT THE END OF EACH DAY TO AN APPROVED SITE. IN THE JUDGMENT OF THE VILLAGE, SHOULD IT BE NECESSARY TO REMOVE SUCH MATERIALS, THE VILLAGE WILL HAVE THE MATERIAL REMOVED AND THE CONTRACTOR WILL BE BILLED (CHARGED) ACCORDINGLY.
- THE CONTRACTOR MAY OBTAIN MUNICIPAL WATER IN BULK, AT NO CHARGE, AS LONG AS THERE IS NOT A "WATERING BAN IN EFFECT. THE INDISCRIMINATE USE OF FIRE HYDRANTS IS STRICTLY PROHIBITED. WATER FOR CONSTRUCTION SHALL BE METERED OR OTHERWISE ACCOUNTED FOR AND A DAILY LOG MAINTAINED. THE CONTRACTOR SHALL PROVIDE THE WATER TRUCK AND DRIVER REQUIRED TO OBTAIN AND TRANSPORT THIS WATER. THE VILLAGE RESERVES THE RIGHT TO RESTRICT OR REFUSE THE USE OF VILLAGE WATER IF DEEMED NECESSARY.
- THE CONTRACTOR SHALL PROTECT AND CAREFULLY PRESERVE ALL SECTION OR SUBSECTION MONUMENTS OR PROPERTY OR REFERENCE MARKERS UNTIL THE OWNERS, HIS AGENT OR AN AUTHORIZED SURVEYOR HAS WITNESSED OR OTHERWISE REFERENCED THEIR LOCATIONS.

8. EXISTING BUILDING FOUNDATION AND CONCRETE WALL DIMENSIONS AND ELEVATIONS ARE SHOWN FOR REFERENCE ONLY. FIELD VERIFY CONDITIONS PRIOR TO CONSTRUCTION. ALL VERIFICATION SHALL BE INCLUDED IN THE APPLICABLE REMOVAL PAY ITEM.

9. PROVIDE TEMPORARY SHORING OF EXISTING STRUCTURES AS REQUIRED DURING CONSTRUCTION. ALL SHORING SHALL BE INCLUDED IN THE APPLICABLE REMOVAL PAY ITEM.

10. ANY SIGNS OR MAILBOXES THAT ARE IN CONFLICT WITH THE PROPOSED CONSTRUCTION SHALL BE REMOVED AND REPLACED IN ACCORDANCE WITH VILLAGE STANDARDS AND INCLUDED IN THE PAY ITEM FOR SIDEWALK REMOVAL. MAIL SERVICE SHALL BE MAINTAINED AT ALL TIMES.

11. EXISTING PAVEMENT, DRIVEWAY PAVEMENT, CURB AND GUTTER AND SIDEWALK TO REMAIN IN PLACE SHALL BE SAW CUT FULL DEPTH TO PROVIDE A NEAT VERTICAL FACE BETWEEN THE PROPOSED AND EXISTING AND SHALL BE INCLUDED IN THE PRICE OF THE APPROPRIATE REMOVAL PAY ITEM.

12. IN AREAS WHERE THE EXISTING DRIVEWAY, OR SIDEWALK IS TO BE REMOVED AND REPLACED, THE REMOVAL AND DISPOSAL OF ANY ADDITIONAL MATERIAL REQUIRED TO ESTABLISH THE PROPOSED DRIVEWAY OR SIDEWALK SUBGRADE ELEVATION SHALL BE INCLUDED IN THE PAY ITEMS, DRIVEWAY PAVEMENT REMOVAL OR SIDEWALK REMOVAL.

13. EXISTING CURB AND GUTTER, ROADWAY PAVEMENT AND CONCRETE RETAINING WALL INFRASTRUCTURE WITHIN THE CEDAR LAKE ROAD RIGHT-OF-WAY ARE TO REMAIN. THE CONTRACTOR SHALL TAKE EXTREME CAUTION WHEN ACCESSING THE SITE TO PRESERVE THIS EXISTING INFRASTRUCTURE. IF THE EXISTING INFRASTRUCTURE IS DAMAGED, THE INFRASTRUCTURE SHALL BE REPLACED IN KIND TO THE SATISFACTION OF LAKE COUNTY DIVISION OF TRANSPORTATION, THE VILLAGE AND THE ENGINEER. REPLACEMENT SHALL BE INCLUDED IN THE COST OF THE CONTRACT.

14. THE CONTRACTOR SHALL PROVIDE AND INSTALL TWO (2) WEIGHTED SANDBAGS ON EACH TYPE I OR TYPE II BARRICADE USED. ONE (1) WEIGHTED SANDBAG SHALL BE PLACED ACROSS EACH BOTTOM RAIL.

15. PORTLAND CEMENT CONCRETE SIDEWALK SHALL BE THICKENED AT LOCATIONS WHERE THE SIDEWALK CROSSES DRIVEWAYS. TRANSVERSE EXPANSION JOINTS 3/4" SHALL BE PLACED EVERY 50 FEET OR AS DIRECTED BY THE ENGINEER. TRANSVERSE CONTRACTION JOINTS SHALL BE PLACED EVERY 5- FEET.

16. ALL POSTS, RAILROAD TIES, AND DECORATIVE TIMBER IN CONFLICT WITH THE PROPOSED IMPROVEMENTS SHALL BE REMOVED AND RELOCATED OR PROPERLY DISPOSED OF AS DETERMINED BY THE ENGINEER AT THE TIME OF CONSTRUCTION AND SHALL BE INCLUDED IN THE COST OF DEBRIS REMOVAL. EVERY EFFORT SHALL BE MADE BY THE CONTRACTOR WHEN REMOVING THESE ITEMS TO PRESERVE THEM FROM HARM. ITEMS NOT RELOCATED SHALL BE PROPERLY DISPOSED OF BY THE CONTRACTOR.

17. FURNISHED EXCAVATION FROM AN OFF-SITE LOCATION, IF NECESSARY, SHALL BE INCLUDED IN THE ITEM EARTH EXCAVATION.

18. A PORTABLE BATHROOM(S) SHALL BE PLACED ON THE JOB SITE(S) AND RELOCATED WHEN NECESSARY SO IT IS ACCESSIBLE TO WORKERS. IF WORK IS OCCURRING AT SEVERAL LOCATIONS, ONE PORTABLE BATHROOM SHALL BE PLACED AT EACH LOCATION WITHIN A REASONABLE DISTANCE FROM THE WORK AS DETERMINED BY THE ENGINEER. THIS SHALL BE INCLUDED IN THE COST OF THE CONTRACT.

19. THE MC-30 PRIME COAT APPLICATION RATE SHALL BE 0.3 GAL/SY.

20. FOR STEEL BARS CERTIFICATION, PLEASE CONTACT IDOT BUREAU OF MATERIALS AT (847) 705-4361.

LAKE COUNTY DIVISION OF TRANSPORTATION GENERAL NOTES

- THE REVIEW AND APPROVAL OF THESE FINAL ENGINEERING PLANS AND SPECIFICATIONS BY THE LAKE COUNTY DIVISION OF TRANSPORTATION DOES NOT CONSTITUTE A RELEASE FROM OR GRANT OF VARIATION FROM THE RULES, REGULATIONS, AND SPECIFICATIONS REQUIRED IN THE LAKE COUNTY HIGHWAY UTILITY AND FACILITY PLACEMENT ORDINANCE, LATEST EDITION, AS AMENDED, OR ANY SUCCESSOR DOCUMENT OR DOCUMENTS THERETO. THE PERMITTEE, THE PERMITTEE'S DESIGNATED REPRESENTATIVES, AND/OR ALL SUCCESSORS AND ASSIGNS SHALL BE SOLELY RESPONSIBLE FOR ALL WORK AND IMPROVEMENTS WITHIN THE LIMITS OF THE COUNTY HIGHWAY RIGHT-OF-WAY. UNLESS OTHERWISE SPECIFIED, APPROVED IN WRITING BY THE LAKE COUNTY COUNTY ENGINEER, AND ON FILE WITH THE LAKE COUNTY DIVISION OF TRANSPORTATION, ALL WORK AND MATERIALS NECESSARY TO CONSTRUCT UTILITIES AND FACILITIES AND RESTORE THE RIGHT-OF-WAY WITHIN THE LIMITS OF THE COUNTY HIGHWAY SHALL BE IN CONFORMANCE WITH THE RULES, REGULATIONS, AND SPECIFICATIONS OF THE LAKE COUNTY UTILITY AND FACILITY PLACEMENT ORDINANCE, LATEST EDITION, AS AMENDED, OR ANY SUCCESSOR DOCUMENT OR DOCUMENTS THERETO.
- THE CONSTRUCTION, INCLUDING MATERIALS USED, OF THIS UTILITY AND FACILITY SHALL BE IN ACCORDANCE WITH APPLICABLE PORTIONS OF THE MOST RECENT EDITIONS OF "THE STANDARD SPECIFICATIONS FOR ROAD AND BRIDGE CONSTRUCTION", THE "SUPPLEMENTAL SPECIFICATIONS AND RECURRING SPECIAL PROVISIONS", "ILLINOIS MANUAL ON UNIFORM TRAFFIC CONTROL DEVICES FOR STREETS AND HIGHWAYS", AND "STANDARD SPECIFICATIONS FOR TRAFFIC CONTROL ITEMS"; INCLUDING ALL AMENDMENTS AND SUCCESSOR DOCUMENTS TO THE AFOREMENTIONED DOCUMENTS AS PUBLISHED OR ADOPTED BY THE ILLINOIS DEPARTMENT OF TRANSPORTATION UNLESS OTHERWISE STATED IN THESE ENGINEERING PLANS.
- THE CONSTRUCTION OF THIS UTILITY OR FACILITY SHALL ALSO BE IN ACCORDANCE WITH THE "LAKE COUNTY HIGHWAY UTILITY AND FACILITY PLACEMENT ORDINANCE," LATEST EDITION, AS AMENDED, OR ANY SUCCESSOR DOCUMENT OR DOCUMENTS THERETO.
- THE LAKE COUNTY DIVISION OF TRANSPORTATION SHALL NOT BE HELD LIABLE FOR ANY ERRORS OR OMISSIONS IN THESE ENGINEERING PLANS OR FOR ANY ADDITIONAL WORK, WHICH MAY BE NEEDED DUE TO ERRORS OR OMISSIONS IN THESE ENGINEERING PLANS.
- THE PERMITTEE SHALL BE RESPONSIBLE FOR ANY ADDITIONAL WORK, AND ALL COSTS THEREOF, REQUIRED BECAUSE OF ERRORS OR OMISSIONS IN THESE ENGINEERING PLANS AND FOR THE CORRECTION OF ANY CONSTRUCTION, MAINTENANCE, OR SAFETY PROBLEMS, WHICH BECOME APPARENT DURING CONSTRUCTION OR BY INSPECTIONS MADE BY THE PERSON IN CHARGE OR THE LAKE COUNTY DIVISION OF TRANSPORTATION.
- THE PERSON IN CHARGE SHALL NOTE ANY CHANGES FROM THESE ENGINEERING PLANS AND SHALL NOTIFY THE PERMIT DEPARTMENT OF THE LAKE COUNTY DIVISION OF TRANSPORTATION ABOUT ANY CHANGES THAT DEVIATE FROM THE INTENT OF THE ENGINEERING PLANS.

SUGGESTED STAGES OF CONSTRUCTION

PEDESTRIAN ACCESS.

PEDESTRIAN ACCESS SHALL BE MAINTAINED AT ALL TIMES.

CONSTRUCTION HOURS.

CONSTRUCTION ACTIVITY WITHIN THE PROJECT LIMITS SHALL OCCUR BETWEEN 7:00 AM AND 7:00 PM IN ACCORDANCE WITH THE VILLAGE ORDINANCE.

GENERAL NOTES:

EMERGENCY ACCESS SHALL BE MAINTAINED AT ALL TIMES.

CONSTRUCTION OPERATIONS INVOLVING THE TEMPORARY CLOSING OF DRIVES OR THE ROAD SHALL NOT BE COMMENCED WITHOUT AT LEAST THREE (3) DAYS PRIOR NOTICE TO THE VILLAGE AND COUNTY BY THE CONTRACTOR. THE CONTRACTOR WILL ALSO BE REQUIRED TO PROVIDE A 48-HOUR NOTICE TO AFFECTED PARTIES BY DISTRIBUTING WRITTEN NOTICES AND/OR POSTING SIGNS.

STORAGE OF CONSTRUCTION MATERIALS AND EQUIPMENT IS PERMITTED ON THE EXISTING PARKING LOT LOCATED IMMEDIATELY WEST OF CEDAR LAKE ROAD. NO CONSTRUCTION MATERIALS SHALL BE STORED AT ANY OTHER LOCATION.

THE CONTRACTOR SHALL UTILIZE A MECHANICAL SWEEPER TO CLEAN STREETS AFFECTED BY CONTRACTORS OPERATIONS, INCLUDING HAUL ROUTES, AT LEAST TWICE PER WEEK AND ADDITIONALLY AS DIRECTED BY THE ENGINEER. THIS WORK SHALL BE INCLUDED IN THE COST OF CONSTRUCTION.

CONSTRUCTION STAGING SEQUENCE:

STAGE I: CONCRETE DEMOLITION AND REMOVAL.

STAGE II: SITE RESTORATION.

TEMPORARY EROSION CONTROL MEASURES SHALL BE INSTALLED PRIOR TO THE COMMENCEMENT OF CONSTRUCTION. WHERE PARKWAYS ARE DISTURBED, TEMPORARY EROSION CONTROL MEASURES SHALL BE ESTABLISHED WITHIN 21 DAYS OF THE COMPLETION OF DISTURBANCE AND MAINTAINED TO THE SATISFACTION OF THE VILLAGE AND COUNTY.

STAGE I: CONCRETE DEMOLITION AND REMOVAL.

PHASE 1: SUBMIT FENCE SHOP DRAWINGS FOR REVIEW.

PHASE 2: SAWCUT CONCRETE.

REMOVE SITE DEBRIS.

PHASE 3: REMOVE CONCRETE FROM BUILDING SLABS, FOUNDATION WALLS AND BINS.

PHASE 4: REMOVE EXISTING GRAVEL, HOT-MIX ASPHALT (MAINTAINING PORTIONS FOR SITE ACCESS), UNSUITABLE MATERIALS AND EARTH EXCAVATION.

PHASE 5: COMMENCE REMOVAL WORK FOR NEW DRIVEWAY TO ACCESS METRA SITE.

INSTALL STREET LIGHT FOUNDATION.

PHASE 6: STABILIZE ALL DAMAGED PARKWAYS WITH TEMPORARY EROSION CONTROL SEEDING.

STAGE II: SITE RESTORATION.

PHASE 1: COMMENCE INSTALLING TOPSOIL, EXCELSIOR BLANKET AND SEEDING ON DISTURBED AREAS.

INSTALL GRANULAR STRUCTURAL FILL IN CONCRETE BIN VOID.

INSTALL CONCRETE PAD AT LANDSCAPE BED.

PHASE 2: COMMENCE INSTALLING FENCE.

INSTALL STREET LIGHT AND HANDHOLE.

COMPLETE INSTALLATION OF NEW DRIVEWAY TO METRA SITE.

COMMENCE INSTALLING LANDSCAPING ELEMENTS.

PHASE 3: REMOVE REMAINING HOT-MIX ASPHALT (PREVIOUSLY RETAINED FOR SITE ACCESS) AND UNSUITABLE MATERIALS.

ENSURE REMOVAL IS STAGED TO PREVENT DAMAGE TO FINAL GRADED AREAS.

COMPLETE INSTALLING TOPSOIL, EXCELSIOR BLANKET AND SEEDING ON DISTURBED AREAS.

PHASE 4: REMOVE EXISTING SIDEWALK, DRIVEWAY APRON AND CURB AND GUTTER AT SITE ACCESS TO CEDAR LAKE ROAD.

PHASE 5: INSTALL REPLACEMENT SIDEWALK, RESTORE DRIVEWAY APRON AREA AND INSTALL CURB AND GUTTER AT SITE ACCESS TO CEDAR LAKE ROAD.

F.A. ROUTE NO.	SECTION	COUNTY	TOTAL SHEETS	SHEET NO.
06-00028-00-LS	LAKE	ILLINOIS	18	2
STA.	TO STA.	FED. ROAD DIST. NO.	FED. AID PROJECT	
C-91-150-07		C-91-150-07	TE-00D1(757)	

CONTRACT NO.: 83930

COMMITMENTS

- JULIE MEMBER COMPANIES HAVE ADVISED OF A POSSIBLE UTILITY SERVICE(S) LATERALLY CROSSING THE PROJECT SITE IN THE VICINITY OF STA. 5+75. THE POSSIBLE UTILITY SERVICE(S), MAY SERVE THE ROUND LAKE METRA STATION. PRIOR TO CONSTRUCTION, THE CONTRACTOR IS RESPONSIBLE TO VERIFY THE PRESENCE OF SAID UTILITY SERVICE(S) AND NOTIFY THE VILLAGE, ENGINEER AND JULIE MEMBER COMPANY(S) OF THE IMPACT. IMPACT MAY RESULT IN MODIFICATIONS TO THE PROPOSED GRADING PLAN AS WELL AS ADJUSTMENT IN QUANTITIES, TO ENSURE ADEQUATE VERTICAL SEPARATION OF THE POSSIBLE UTILITY SERVICE(S) IS PROVIDED. ALL ACTIVITIES ASSOCIATED WITH THIS INVESTIGATION AND SUBSEQUENT ACTION ARE INCLUDED IN THE COST OF THE CONTRACT.
- IN ADDITION TO THE PROCUREMENT OF RAILROAD PROTECTIVE LIABILITY INSURANCE, ANY CONTRACTOR(S), SUB-CONTRACTOR(S) ETC. REQUIRING ACCESS TO THE METRA PROPERTY FOR THIS WORK SHALL BE REQUIRED TO OBTAIN METRA'S RIGHT OF ENTRY AGREEMENT, PRIOR TO THE COMMENCEMENT OF ANY WORK ON METRA'S PROPERTY.

BENCHMARKS

- SOUTH FLANGE BOLT ON FIRE HYDRANT AT SOUTH SIDE ROUTE 134 BETWEEN "ACE HARDWARE" AND "LAKES BOWL" ELEVATION = 777.58
- CHISELED "X" ON TOP OF CURB AT ENTRANCE TO ATM NEAR THE ENTRANCE OF "ACE HARDWARE" ELEVATION = 774.03
- CHISELED "X" ON TOP OF CONCRETE RETAINING WALL APPROXIMATELY 51.6 FEET NORTH OF THE CENTERLINE OF THE MAIN TRACK AT METRA GRADE CROSSING AT CEDAR LAKE ROAD. "X" IS ON WEST SIDE OF CEDAR LAKE ROAD BETWEEN SIDEWALK AND BACK OF CURB. ELEVATION = 793.60

HIGHWAY STANDARDS

- 000001-04 - STANDARD SYMBOLS, ABBREVIATIONS AND PATTERNS
- 280001-03 - TEMPORARY EROSION CONTROL SYSTEMS
- 701502-01 - URBAN LANE CLOSURE, 2L, 2W, WITH BIDIRECTIONAL LEFT TURN LANE
- 701801-03 - LANE CLOSURE MULTILANE 1W OR 2W CROSSWALK OR SIDEWALK CLOSURE
- 702001-06 - TRAFFIC CONTROL DEVICES

INDEX OF SHEETS

SHEET NO.	TITLE
1.	COVER SHEET
2.	INDEX OF SHEETS, GENERAL NOTES, COMMITMENTS, BENCHMARKS, SUGGESTED STAGES OF CONSTRUCTION AND HIGHWAY STANDARDS
3.	SUMMARY OF QUANTITIES
4.	TYPICAL SECTIONS AND HOT-MIX ASPHALT MIXTURE REQUIREMENTS TABLE
5.	SCHEDULE OF MATERIALS
6.	PLAN: METROPOLITAN CORRIDOR - DEMOLITION PLAN STA 1+00 TO STA 10+00
7.	PLAN: METROPOLITAN CORRIDOR - FINAL GRADING PLAN STA 1+00 TO STA 10+00
8.	PLAN: METROPOLITAN CORRIDOR - EROSION AND SEDIMENT CONTROL PLAN STA 1+00 TO STA. 10+00
9.	PLAN: METROPOLITAN CORRIDOR - LANDSCAPE PLAN STA 8+00 TO STA 9+50
10.	PLAN: METROPOLITAN CORRIDOR - LIGHTING PLAN STA 8+00 TO STA 9+50
11.	MISCELLANEOUS DETAILS
12.	DISTRICT 1 (TC-10) TRAFFIC CONTROL AND PROTECTION FOR SIDE ROADS, INTERSECTIONS AND STREETS
13.	DISTRICT 1 (TC-18) SIGNING FOR FLAGGING OPERATIONS AT WORK ZONE OPENINGS
14.	DISTRICT 1 (TC-22) TEMPORARY INFORMATION SIGNING
15.	DISTRICT 1 (BM-14) METHOD OF FLAGGING
16-18.	CROSS SECTIONS: METROPOLITAN CORRIDOR

I:\R001\007049_TEP_DWG\060749_INDEX-GNITES-BM.dwg - S1-2
 Plotted: 5-09-07 @ 1:41pm By: 560kar
 Copy to: 560kar
 Scale of Illinois Professional Design Firm
 License No. 04-001121 - Expires 4-30-07

CONSULTANTS	REV. NO.	DATE	DESCRIPTION
	1	4-4-07	VILLAGE/IDOT/LCDOT/METRA REVIEW
	2	5-10-07	VILLAGE/IDOT/LCDOT/METRA REVIEW

* - REFER TO EQUIPMENT MANUFACTURER'S SHOP DRAWINGS

BAXTER & WOODMAN
 Consulting Engineers

Baxter & Woodman
 Crystal Lake, Illinois 815.459.1280
 Burlington, Wisconsin 262.763.7834
 Mokena, Illinois 708.475.2000
 DuKali, Illinois 815.787.3111
 Grayslake, Illinois 847.223.6088
 Rockford, Illinois 815.489.1551
 Plainfield, Illinois 815.609.7425

VILLAGE OF ROUND LAKE, ILLINOIS
METROPOLITAN CORRIDOR BEAUTIFICATION
AND PEDESTRIAN ACCESS ACCOMMODATION PROJECT

INDEX TO SHEETS, GEN. NOTES, COMMITMENTS, BENCHMARKS, SUGGESTED STAGES OF CONSTRUCTION AND HIGHWAY STANDARDS

DESIGNED BY: MWP
 DRAWN BY: UKB
 CHECKED BY: MWP
 DATE: 2-09-07

SCALE: NONE
 PROJECT NO: 060749
 SHEET NO: 2 OF 18

SUMMARY OF QUANTITIES

CODE NUMBER	PAY ITEM DESCRIPTION	UNIT	TOTAL CONSTRUCTION CODE	
			QUANTITY	Y003 Y030-1E
20100110	TREE REMOVAL (6 TO 15 UNITS DIAMETER)	UNIT	82	82
20100210	TREE REMOVAL (OVER 15 UNITS DIAMETER)	UNIT	46	46
20101000	TEMPORARY FENCE	FOOT	775	775
20200100	EARTH EXCAVATION	CU YD	1,031	1,031
20201200	REMOVAL AND DISPOSAL OF UNSUITABLE MATERIALS	CU YD	607	607
* 21101630	TOPSOIL FURNISH AND PLACE - 8"	SQ YD	5,983	5,983
21400100	GRADING AND SHAPING OF DITCHES	FOOT	579	579
* 25000100	SEEDING, CLASS 1	ACRE	1.24	1.24
* 25000400	NITROGEN FERTILIZER NUTRIENT	POUND	112	112
* 25000500	PHOSPHORUS FERTILIZER NUTRIENT	POUND	112	112
* 25000600	POTASSIUM FERTILIZER NUTRIENT	POUND	112	112
* 25100401	EXCELSIOR BLANKET, SPECIAL	SQ YD	5,983	5,983
25200200	SUPPLEMENTAL WATERING	UNIT	36	36
28000250	TEMPORARY EROSION CONTROL SEEDING	POUND	124	124
28000300	TEMPORARY DITCH CHECKS	EACH	4	4
35101600	AGGREGATE BASE COURSE, TYPE B 4"	SQ YD	70	70
35101800	AGGREGATE BASE COURSE, TYPE B 6"	SQ YD	322	322
40600100	BITUMINOUS MATERIALS (PRIME COAT)	GALLON	60	60
40600300	AGGREGATE (PRIME COAT)	TON	2	2
40603080	HOT-MIX ASPHALT BINDER COURSE, IL-19.0, N50	TON	101	101
40603310	HOT-MIX ASPHALT SURFACE COURSE, MIX C, N50	TON	34	34
42300400	PORTLAND CEMENT CONCRETE DRIVEWAY, 8 INCH	SQ YD	8	8
42400200	PORTLAND CEMENT CONCRETE SIDEWALK 5 INCH	SQ FT	630	630
42400410	PORTLAND CEMENT CONCRETE SIDEWALK 8 INCH	SQ FT	120	120
44000198	HOT-MIX ASPHALT SURFACE REMOVAL, VARIABLE DEPTH	SQ YD	1,840	1,840
44000200	DRIVEWAY PAVEMENT REMOVAL	SQ YD	20	20
44000300	CURB REMOVAL	FOOT	72	72
44000600	SIDEWALK REMOVAL	SQ FT	650	650
44004700	SIDEWALK REMOVAL (SPECIAL)	SQ FT	11,148	11,148
44213200	SAW CUTS	FOOT	786	786
50102400	CONCRETE REMOVAL	CU YD	67	67
* 56500600	DOMESTIC WATER SERVICE BOXES TO BE ADJUSTED	EACH	1	1
60605100	COMBINATION CONCRETE CURB AND GUTTER, TYPE B-6.24 (ABUTTING EXISTING PAVEMENT)	FOOT	72	72
67100100	MOBILIZATION	L SUM	1	1
70102622	TRAFFIC CONTROL AND PROTECTION, STANDARD 701502	L SUM	1	1
70102640	TRAFFIC CONTROL AND PROTECTION, STANDARD 701801	L SUM	1	1
* 81400735	HANDHOLE, COMPOSITE CONCRETE SPECIAL	EACH	1	1
* 81603040	UNIT DUCT, 600V, 2-1C NO. 6, 1/C NO. 8 GROUND (XLP-TYPE USE) 1" DIA. POLYETHYLENE	FOOT	50	50
* 81702120	ELECTRICAL CABLE IN CONDUIT, 600V, (XLP-TYPE USE), 1/C NO. 8	FOOT	60	60
* 81702130	ELECTRICAL CABLE IN CONDUIT, 600V, (XLP-TYPE USE), 1/C NO. 6	FOOT	120	120
* 81900200	TRENCH AND BACKFILL FOR ELECTRICAL WORK	FOOT	40	40
* 83600210	LIGHTING POLE FOUNDATION, 24" DIAMETER (SPECIAL)	FOOT	5	5
* A2000118	TREE, ACER FREEMANII AUTUMN BLAZE (AUTUMN BLAZE FREEMAN MAPLE) 3" CALIPER, BALLED AND BURLAPPED	EACH	2	2
* C2006236	SHRUB, RIBES ALPINUM (ALPINE CURRANT), 3' HEIGHT, BALLED AND BURLAPPED	EACH	10	10
* K1003455	LANDSCAPE FILL SOIL	CU YD	20	20
* K1005481	SHREDDED BARK MULCH 3"	SQ YD	59	59
* X0301115	LANDSCAPE EDGING	FOOT	145	145
* X0301407	PERENNIAL PLANTS, GALLON POT	UNIT	2.14	2.14
X0320239	CONCRETE WALL REMOVAL	FOOT	446	446
X0321158	PARK BENCHES	EACH	1	1
X0322256	TEMPORARY INFORMATION SIGNING	SQ FT	51.4	51.4
X0323360	WOODEN POLE REMOVAL	EACH	2	2
X0323553	ORNAMENTAL FENCE, WROUGHT IRON	FOOT	256	256
X0323973	SEDIMENT CONTROL, SILT FENCE	FOOT	991	991
X0323974	SEDIMENT CONTROL, SILT FENCE MAINTENANCE	FOOT	991	991
XX001621	BRICK PAVER REMOVAL	SQ FT	15	15
XX005317	GRANULAR STRUCTURAL FILL	CU YD	460	460
XZ177600	REMOVE EXISTING BUMPER BLOCKS	EACH	13	13
Z0015500	DEBRIS REMOVAL	L SUM	1	1
Z0019600	DUST CONTROL WATERING	UNIT	12	12
Z0022800	FENCE REMOVAL	FOOT	289	289
Z0048665	RAILROAD PROTECTIVE LIABILITY INSURANCE	L SUM	1	1
* XX006995	LUMINAIRE, METAL HALIDE, 100 WATT, TYPE III, SPECIAL	EACH	1	1
* XX006996	LIGHT POLE, ALUMINIUM, 14', SPECIAL	EACH	1	1
XX006997	CONCRETE FOUNDATION WALL REMOVAL	FOOT	743	743
XX006998	GRAVEL REMOVAL	SQ YD	2,100	2,100
XX006999	WOOD TIE REMOVAL	FOOT	84	84

* INDICATES SPECIALITY ITEM

I:\PROJECTS\060749 ITFA DWGS\060749-000.DWG SH3
 Plotted: 2/7/2007 @ 1:15 PM by: 5806AR
 Copyright © 2007, by Baxter & Woodman, Inc.
 State of Illinois
 License No. 184-001121 - Expires 4-30-07

CONSULTANTS	REV. NO.	DATE	DESCRIPTION
	1	4/4/07	VILLAGE/IDOT/LCDOT/METRA REVIEW
	2	5/10/07	VILLAGE/IDOT/LCDOT/METRA REVIEW

* - REFER TO EQUIPMENT MANUFACTURER'S SHOP DRAWINGS

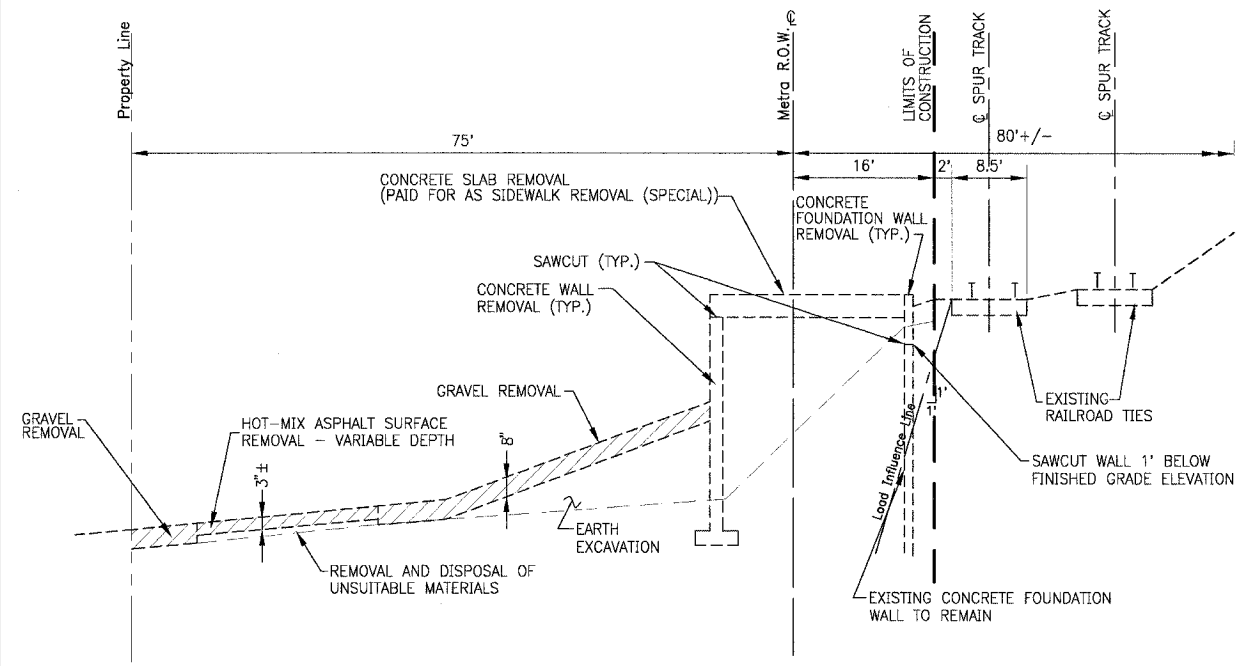
Baxter & Woodman
 Consulting Engineers

Crystal Lake, Illinois 815.459.1260
 Burlington, Wisconsin 262.763.7834
 Moline, Illinois 781.476.2000
 DeKalb, Illinois 815.787.3111
 Crystal Lake, Illinois 847.223.5088
 Rockford, Illinois 815.489.1551
 Plainfield, Illinois 815.609.7425

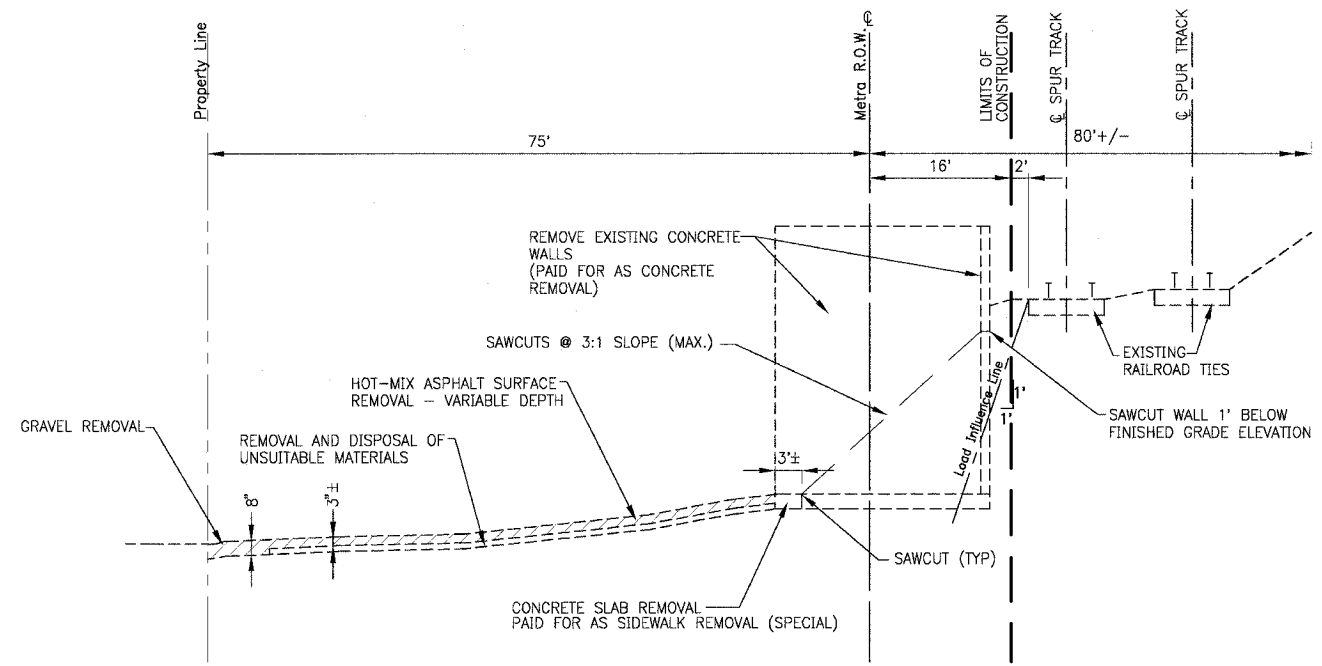
VILLAGE OF ROUND LAKE, ILLINOIS
METROPOLITAN CORRIDOR BEAUTIFICATION
AND PEDESTRIAN ACCESS ACCOMMODATION PROJECT

SUMMARY OF QUANTITIES

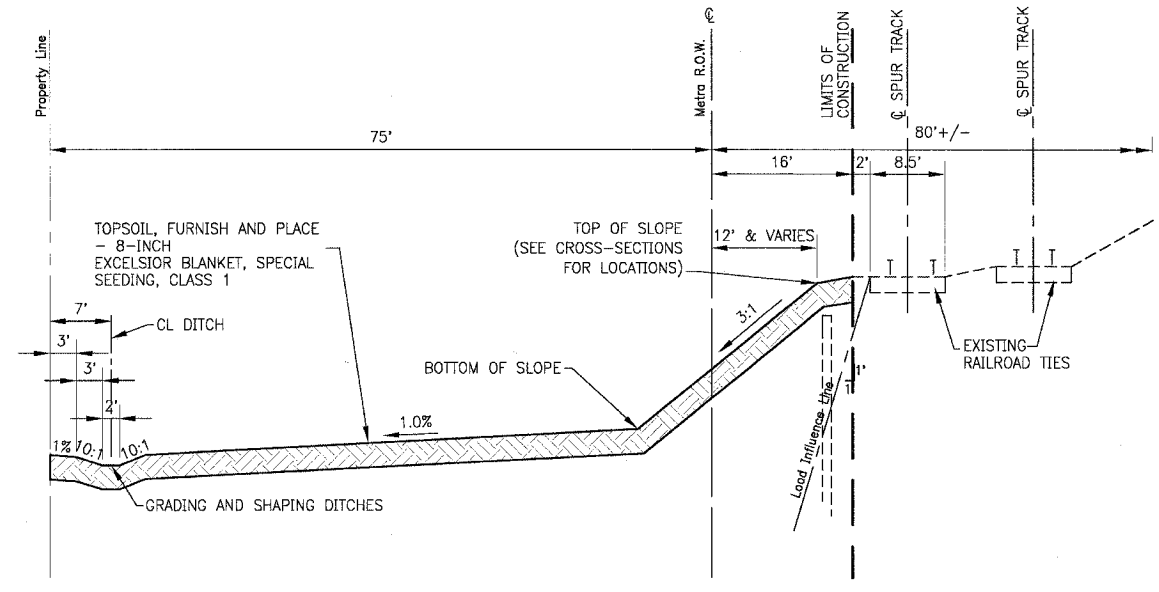
DESIGNED BY MWP	SCALE NONE
DRAWN BY PMP	PROJECT NO. 060749
CHECKED BY MWP	SHEET NO.
DATE 2-09-07	3 OF 18



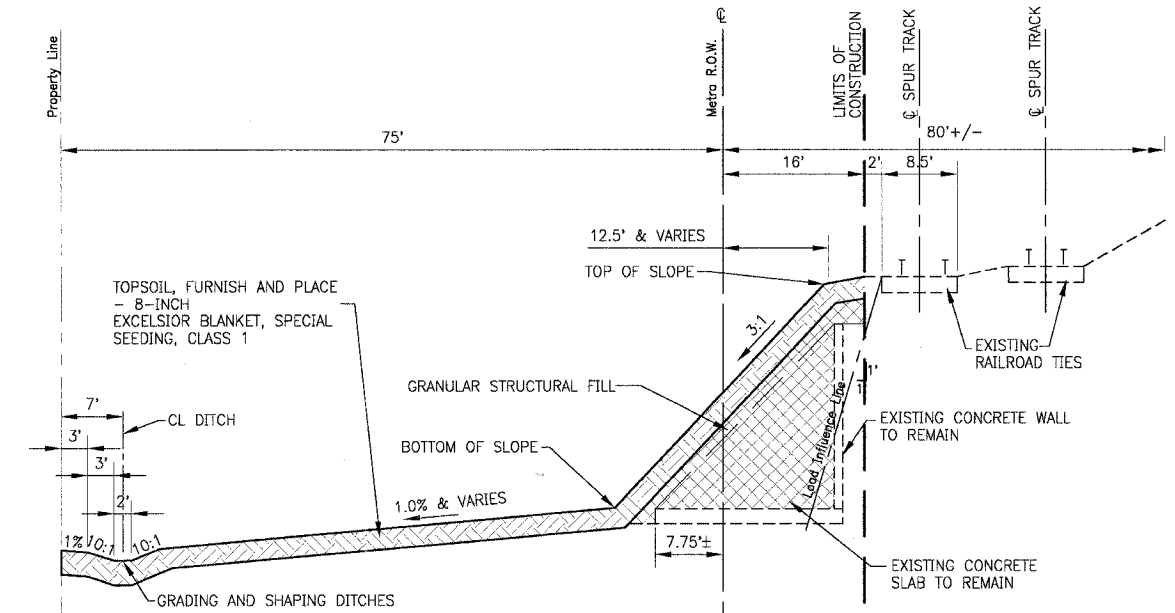
**EXISTING TYPICAL SECTION
METROPOLITAN CORRIDOR**
STA. 2+20 TO STA. 4+23
STA. 5+28 TO STA. 9+38



**EXISTING TYPICAL SECTION
METROPOLITAN CORRIDOR**
STA. 4+23 TO STA. 5+28



**PROPOSED TYPICAL SECTION
METROPOLITAN CORRIDOR**
STA. 2+20 TO STA. 4+23
STA. 5+28 TO STA. 9+38



**PROPOSED TYPICAL SECTION
METROPOLITAN CORRIDOR**
STA. 4+23 TO STA. 5+28

HOT-MIX ASPHALT MIXTURE REQUIREMENTS TABLE

MIXTURE TYPE	AC TYPE	% AIR VOIDS
DRIVEWAYS		
HOT-MIX ASPHALT SURFACE COURSE, MIX "C", N50 (IL 9.5 mm); 2"	PG 64-22	4% @ 50 Gyr.
HOT-MIX ASPHALT BINDER COURSE IL-19, N50, 6"	PG 64-22/58-22	4% @ 50 Gyr.

THE UNIT WEIGHT USED TO CALCULATE ALL HOT-MIX ASPHALT SURFACE MIXTURES IS 112 LBS/SQ. YD./IN
* WHEN RAP EXCEEDS 20%, THE NEW ASPHALT BINDER IN THE MIX SHALL BE PG 58-22

I:\PROJECTS\060749_TIP\DWG\060749-TIP-SECT.dwg - SH4
 Plot on 5-09-07 @ 1:54pm By: j360xar
 S:\projects\060749\060749-TIP\DWG\060749-TIP-SECT.dwg
 Scale: 1" = 10'-0" (Horizontal) 1" = 1'-0" (Vertical)
 User: j360xar

CONSULTANTS	REV. NO.	DATE	DESCRIPTION
BAXTER & WOODMAN Consulting Engineers	1	4/4/07	VILLAGE/IDOT/LCDOT/METRA REVIEW
	2	5/10/07	VILLAGE/IDOT/LCDOT/METRA REVIEW

* - REFER TO EQUIPMENT MANUFACTURER'S SHOP DRAWINGS

BAXTER & WOODMAN
Consulting Engineers

Baxter & Woodman
Crystal Lake, Illinois 815.459.1260
Burlington, Wisconsin 262.765.7834
Mukwonago, Illinois 708.476.2090
DeKalb, Illinois 815.287.3111
Crestview, Illinois 847.223.5088
Rockford, Illinois 815.489.1551
Plainfield, Illinois 815.609.7425

**VILLAGE OF ROUND LAKE, ILLINOIS
METROPOLITAN CORRIDOR BEAUTIFICATION
AND PEDESTRIAN ACCESS ACCOMMODATION PROJECT**

**TYPICAL SECTIONS AND HOT-MIX
ASPHALT MIXTURE REQUIREMENTS TABLE**

DESIGNED BY MWP	SCALE NONE
DRAWN BY UKB	PROJECT NO. 060749
CHECKED BY MWP	SHEET NO.
DATE 2-09-07	4 OF 18

EARTHWORK

LOCATION STA TO STA	UNDERCUT AND PGE REPLACEMENT (CY)	UNSUITABLE EXCAVATION (TOPSOIL) (CY)	REMOVAL & DISPOSAL OF UNSUITABLE MATERIAL (CY)	EARTH EXCAVATION (CY)	UTILITY EXCAVATION (CY)	EXCESS STRUCTURE EXCAVATION (CY)	TOTAL SUITABLE EXCAVATION (CY)	EXCAVATION TO BE USED IN EMBANKMENT (15% SHRINKAGE) (CY)	EMBANKMENT (CY)	EARTHWORK BALANCE WASTE (+) OR SHORTAGE (-) (CY)
METRA CORRIDOR										
02+20 03+00	0	39	39	0	0	0	0	0	2	-2
03+00 04+00	0	110	110	0	0	0	0	0	8	-8
04+00 05+00	0	120	120	37	0	0	37	31	5	26
05+00 06+00	0	130	130	190	0	0	190	162	0	162
06+00 07+00	0	85	85	330	0	0	330	281	11	270
07+00 08+00	0	28	28	365	0	0	365	310	40	270
08+00 09+38	0	95	95	109	0	0	109	93	14	79
TOTALS	0	607	607	1,031	0	0	1,031	877	80	797

EARTHWORK SUMMARY

EARTH EXCAVATION	TOTAL
REMOVAL AND DISPOSAL OF UNSUITABLE MATERIAL	1,031
POROUS GRANULAR EMBANKMENT	607
EXCESS EXCAVATION	0
	797

EARTHWORK NOTES:

ASSUME 8 INCH DEPTH OF TOPSOIL PLACEMENT
 FOR REMOVAL & DISPOSAL OF UNSUITABLE MATERIAL
 ASSUME 8 INCH DEPTH OF TOPSOIL EXCAVATION & 5-INCH WERE PAVEMENT EXISTS
 ASSUME 15% SHRINKAGE OF EARTH EXCAVATION TO BE REUSED AS EMBANKMENT

CONCRETE REMOVAL

LOCATION STA TO STA	DESCRIPTION	CONCRETE FOUNDATION WALL REMOVAL (FOOT)	SIDEWALK REMOVAL (SPECIAL) (SQ FT)	SAW CUTS (FOOT)	CONCRETE REMOVAL (CU YD)	CONCRETE WALL REMOVAL (FOOT)	SIDEWALK REMOVAL (SQ FT)
03+24 04+25	BUILDING	318	3,880	0	0	0	0
04+24 05+28	BINS	0	320	423	67	0	0
05+28 05+68	CONC. SLAB	0	738	139	0	116	0
05+64 06+79	CONC. WALLS	0	0	80	0	267	0
06+80 07+52	CONC. SLAB	0	2,300	63	0	63	0
07+52 08+12	BUILDING	425	3,910	81	0	0	350
08+46 09+38	SIDEWALK	0	0	0	0	0	300
TOTALS		743	11,148	786	67	446	650

I:\ROULEK\060749\11\PL\DWG\060749-500.DWG SH5
 Notes: 2/7/2007 @ 1:13 PM By: 5606AR
 Copyright © 2007, By: Baxter & Woodman, Inc.
 State of Illinois - Professional Design Firm
 License No. - 184-001121 - Expires 4-30-07

CONSULTANTS	REV. NO.	DATE	DESCRIPTION
	1	4/4/07	VILLAGE/IDOT/LCDOT/METRA REVIEW
	2	5/10/07	VILLAGE/IDOT/LCDOT/METRA REVIEW

* - REFER TO EQUIPMENT MANUFACTURER'S SHOP DRAWINGS

Baxter & Woodman
 Consulting Engineers

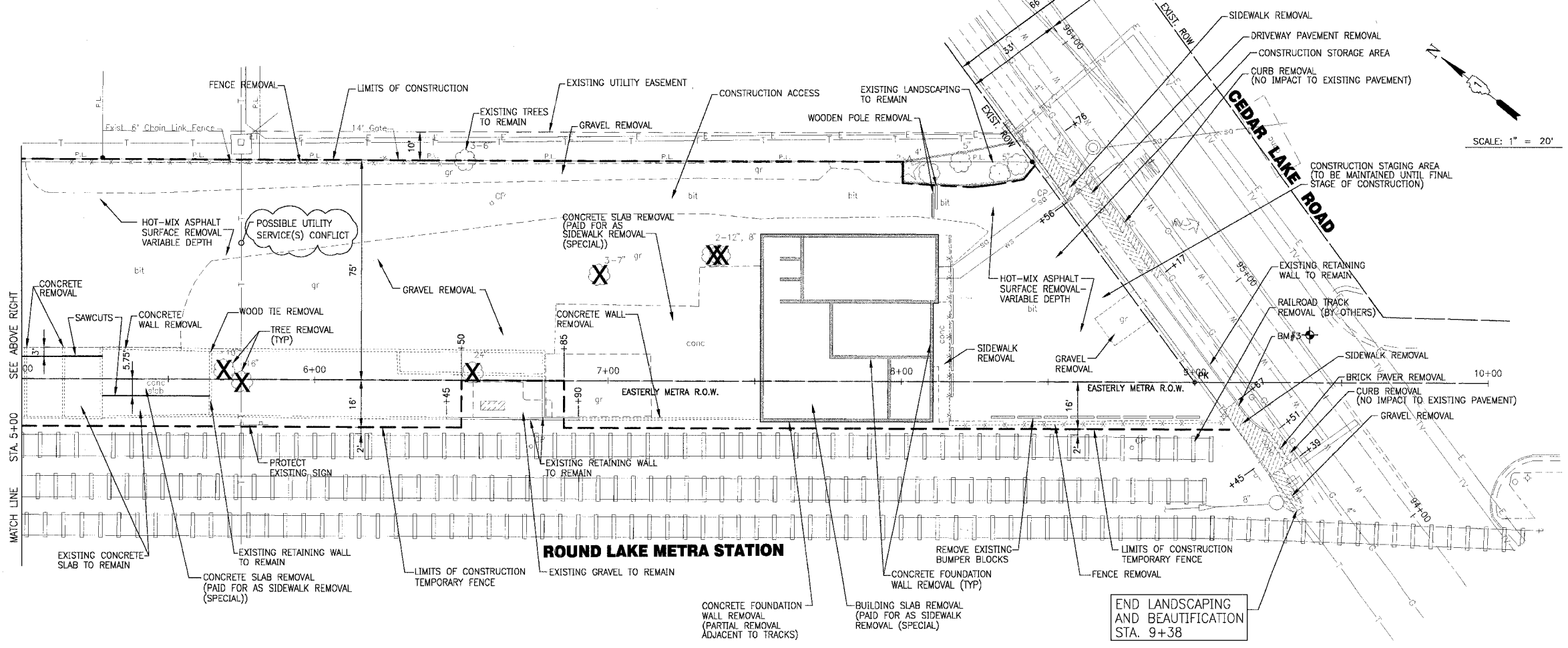
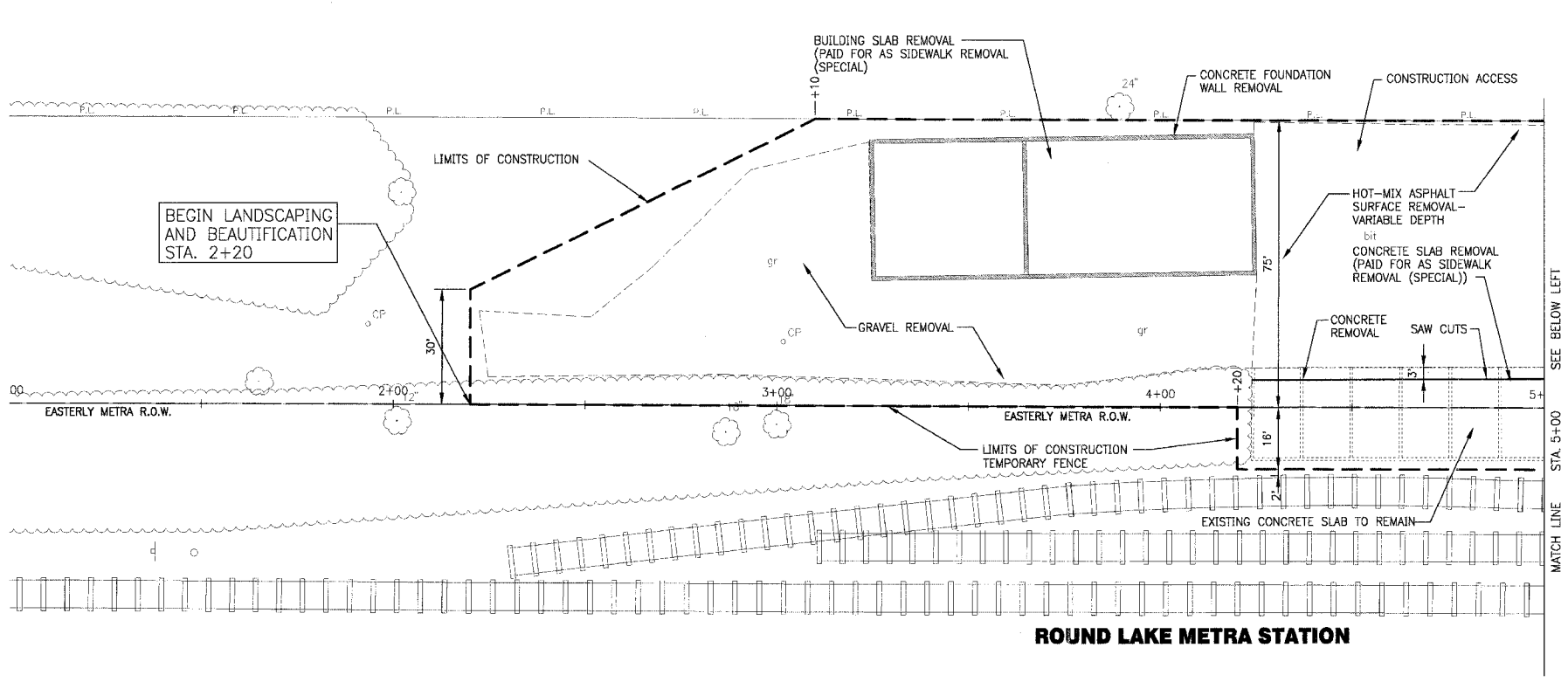
Crystal Lake, Illinois 815.459.1280
 Burlington, Wisconsin 262.763.7834
 Mokena, Illinois 708.478.2090
 DeKalb, Illinois 815.787.3111
 Grayslake, Illinois 847.223.5080
 Rockford, Illinois 815.489.1451
 Plainfield, Illinois 815.609.7425

**VILLAGE OF ROUND LAKE, ILLINOIS
 METROPOLITAN CORRIDOR BEAUTIFICATION
 AND PEDESTRIAN ACCESS ACCOMMODATION PROJECT**

SCHEDULE OF MATERIALS

DESIGNED BY	SCALE
MWP	NONE
DRAWN BY	PROJECT NO.
PMP	060749
CHECKED BY	SHEET NO.
MWP	5 OF 18
DATE	
2-09-07	

FA ROUTE NO.	SECTION	COUNTY	TOTAL SHEETS	SHEET NO.
06-00028-00-LS	LAKE	LAKE	18	6
STA.	TO STA.		FED. ROAD DIST. NO.	FED AID PROJECT
C-91-150-07	ILLINOIS		C-91-150-07	TE-00D1(757)
CONTRACT NO.: 83930				



I:\PROJECTS\060749\11EPA\DWG5\060749A.PLT (DWG) - DEMO-316
 Plotted: 5-10-07 @ 8:24am By: 5601lar
 Copyright © 2006, By Baxter & Woodman, Inc.
 State of Illinois - Professional Design Firm
 License No. - 08-001121 - Expires 4-30-07

CONSULTANTS	REV. NO.	DATE	DESCRIPTION
	1	4/4/07	VILLAGE/IDOT/LCDOT/METRA REVIEW
	2	5/10/07	VILLAGE/IDOT/LCDOT/METRA REVIEW

* - REFER TO EQUIPMENT MANUFACTURER'S SHOP DRAWINGS

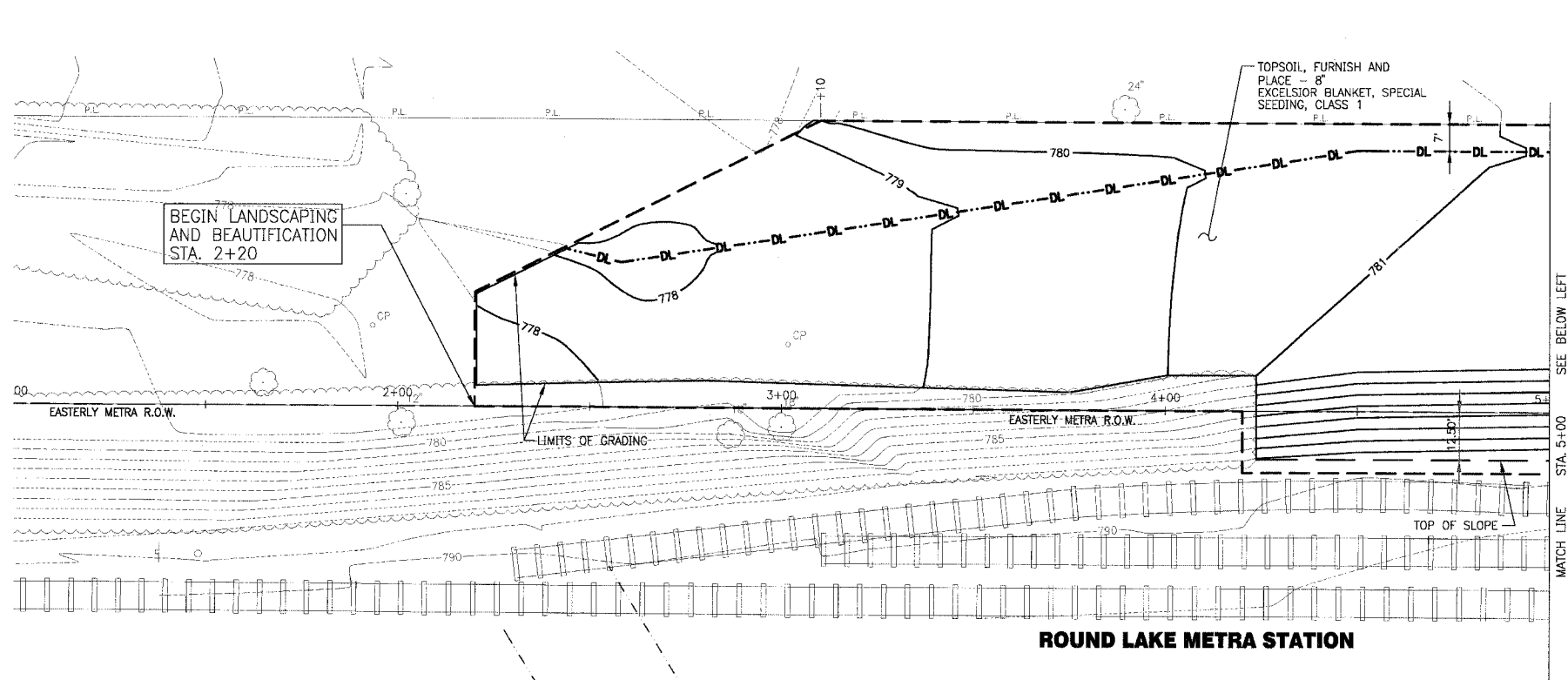
Baxter & Woodman
 Crystal Lake, Illinois 815.459.1800
 Burlington, Wisconsin 262.763.7834
 Mokena, Illinois 708.476.2090
 DeKalb, Illinois 815.787.3111
 Graystone, Illinois 847.223.5098
 Deerfield, Illinois 815.489.1551
 Plainfield, Illinois 815.609.7455

VILLAGE OF ROUND LAKE, ILLINOIS
METROPOLITAN CORRIDOR BEAUTIFICATION
AND PEDESTRIAN ACCESS ACCOMMODATION PROJECT

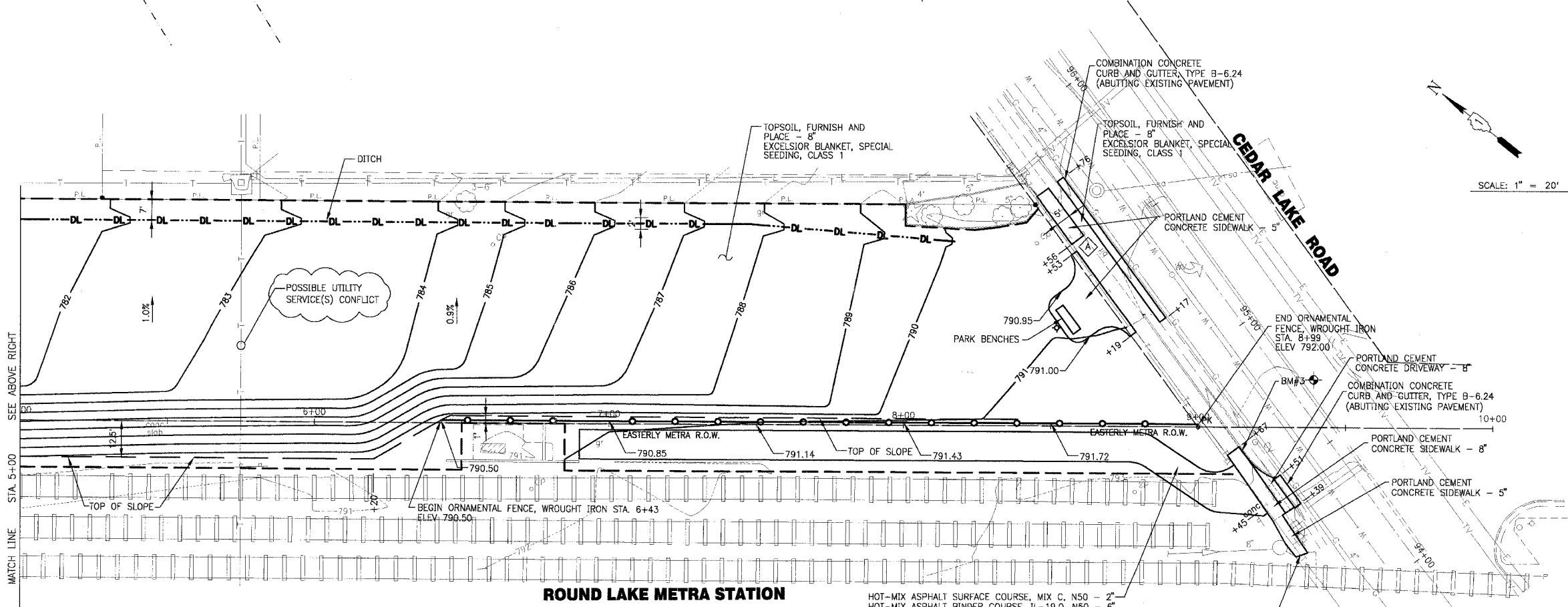
METROPOLITAN CORRIDOR
DEMOLITION PLAN
STA. 1+00 TO STA. 10+00

DESIGNED BY	MWP	SCALE	HORIZ: 1"=20'
DRAWN BY	JKB	PROJECT NO.	060749
CHECKED BY	MWP	SHEET NO.	6 OF 18
DATE	2-09-07		

F.A. ROUTE NO.	SECTION	COUNTY	TOTAL SHEETS	SHEET NO.
06-00028-00-LS	LAKE	ILLINOIS	18	7
STA. TO STA.	FED. ROAD DIST. NO.		FED. AID PROJECT	
C-91-150-07	ILLINOIS		TE-0001(757)	
CONTRACT NO.: 83930				



ROUND LAKE METRA STATION



ROUND LAKE METRA STATION

VILLAGE OF ROUND LAKE, ILLINOIS, PROJECT NO. 060749, DRAWING NO. 2-09-07, SCALE 1"=20', SHEET 7 OF 18. CONSULTANTS: BAXTER & WOODMAN, INC., 100 N. LAKE STREET, CHICAGO, IL 60602.

CONSULTANTS	REV. NO.	DATE	DESCRIPTION
BAXTER & WOODMAN	1	4/4/07	VILLAGE/IDOT/LCDOT/METRA REVIEW
	2	5/10/07	VILLAGE/IDOT/LCDOT/METRA REVIEW

BAXTER & WOODMAN
 Consulting Engineers

Baxter & Woodman
 Crystal Lake, Illinois 815.459.1260
 Burlington, Wisconsin 262.763.7834
 Mokena, Illinois 708.478.2090
 Oak Hills, Illinois 815.787.3111
 Graystone, Illinois 847.238.3088
 Rockford, Illinois 815.489.1551
 Plainfield, Illinois 815.609.7425

VILLAGE OF ROUND LAKE, ILLINOIS
METROPOLITAN CORRIDOR BEAUTIFICATION
AND PEDESTRIAN ACCESS ACCOMMODATION PROJECT

METROPOLITAN CORRIDOR
FINAL GRADING PLAN
STA. 1+00 TO STA. 10+00

DESIGNED BY	SCALE
MWP	HORIZ: 1"=20'
DRAWN BY	PROJECT NO.
UKB	060749
CHECKED BY	SHEET NO.
MWP	7 OF 18
DATE	
2-09-07	

FA. ROUTE NO.	SECTION	COUNTY	TOTAL SHEETS	SHEET NO.
06-00028-00-LS	LAKE	LAKE	18	8
STA.	TO STA.	FED. ROAD DIST. NO.	ILLINOIS	FED AID PROJECT
C-91-150-07				TE-0001(757)
CONTRACT NO.: 83930				

SEDIMENTATION AND EROSION CONTROL NOTES

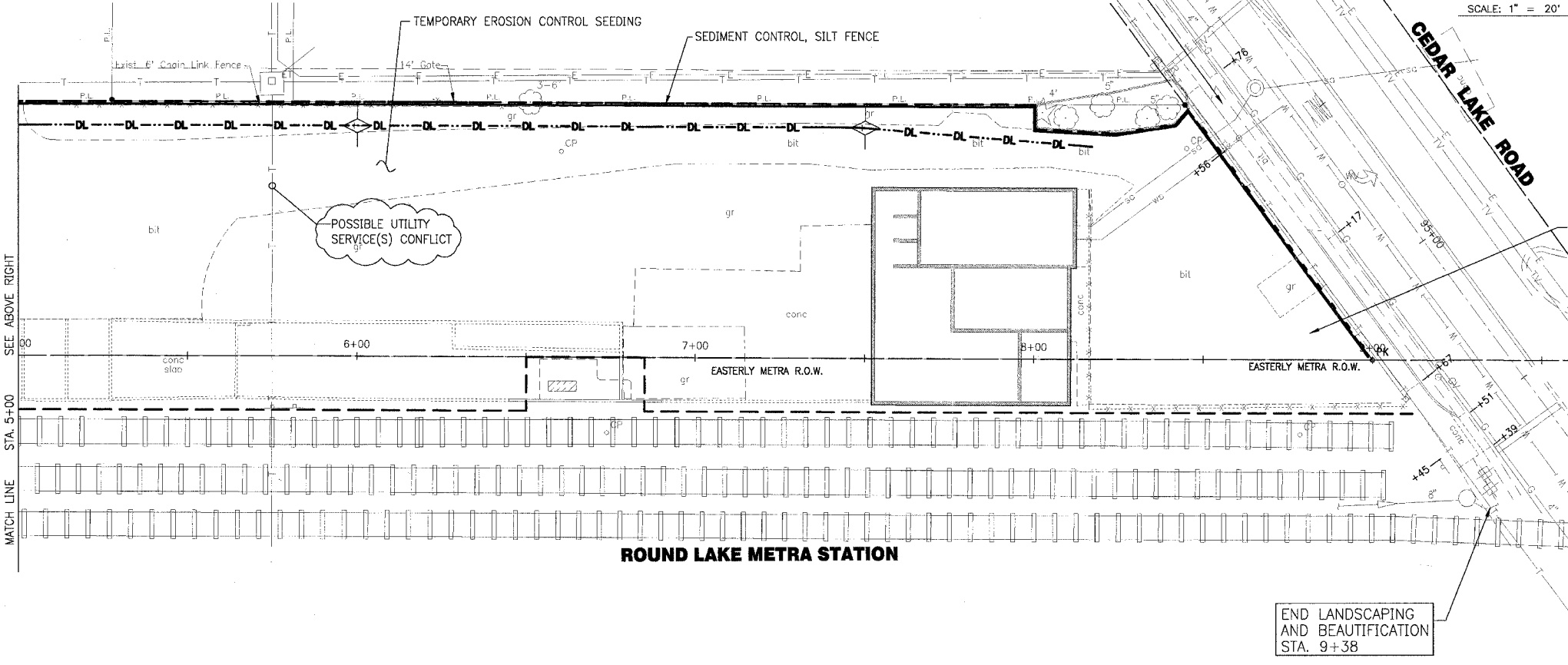
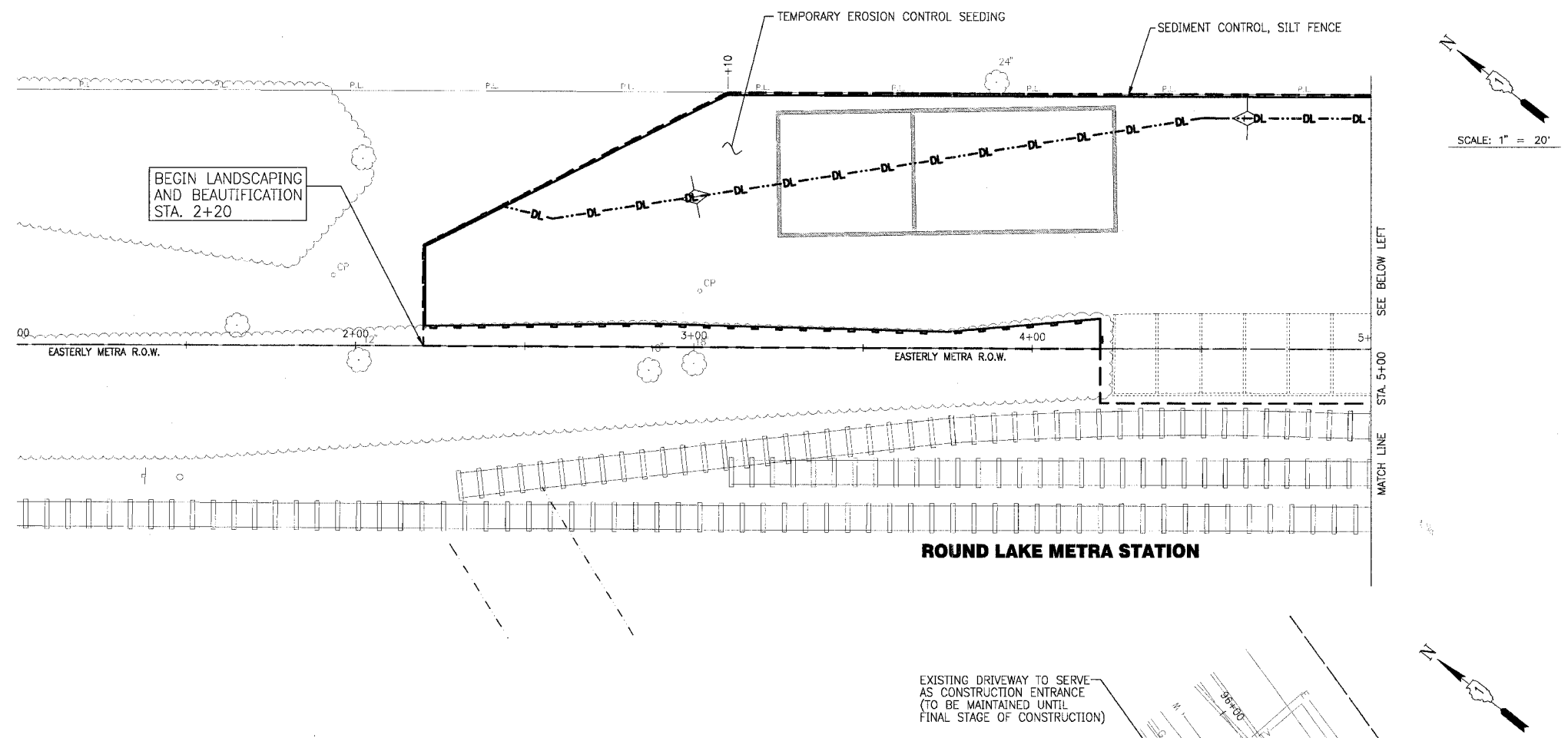
- SOIL EROSION AND SEDIMENT CONTROL FEATURES SHALL BE CONSTRUCTED PRIOR TO THE COMMENCEMENT OF UPLAND DISTURBANCE.
- ALL STORM SEWER FACILITIES THAT ARE OR WILL BE FUNCTIONING DURING CONSTRUCTION SHALL BE PROTECTED, FILTERED, OR OTHERWISE TREATED TO REMOVE SEDIMENT.
- ALL TEMPORARY AND PERMANENT EROSION CONTROL MEASURES MUST BE MAINTAINED AND REPAIRED AS NEEDED. THE GENERAL CONTRACTOR WILL BE RESPONSIBLE FOR INSPECTION AND REPAIR DURING CONSTRUCTION.
- SOIL DISTURBANCE SHALL BE CONDUCTED IN SUCH A MANNER AS TO MINIMIZE EROSION. SOIL STABILIZATION MEASURES SHALL CONSIDER THE TIME OF YEAR, SITE CONDITIONS AND THE USE OF TEMPORARY OR PERMANENT MEASURES.
- SOIL EROSION AND SEDIMENT CONTROL FEATURES SHALL BE CONSTRUCTED PRIOR TO THE COMMENCEMENT OF HYDROLOGIC DISTURBANCE OF UPLAND AREAS.
- DISTURBED AREAS SHALL BE STABILIZED WITH TEMPORARY OR PERMANENT MEASURES WITHIN 14 CALENDAR DAYS OF THE END OF ACTIVE HYDROLOGIC DISTURBANCE, OR REDISTURBANCE.
- AREAS OR EMBANKMENTS HAVING SLOPES GREATER THAN OR EQUAL TO 3H:1V, AND APPROVED BY THE ENFORCEMENT OFFICER, SHALL BE STABILIZED WITH EXCELSIOR BLANKET (SPECIAL) IN COMBINATION WITH SEEDING, CLASS 1.
- EXCELSIOR BLANKET (SPECIAL) SHALL BE REQUIRED ON ALL INTERIOR DETENTION BASIN SIDE SLOPES BETWEEN NORMAL WATER LEVEL AND HIGH WATER LEVEL.
- ALL STORM SEWERS THAT ARE OR WILL BE FUNCTIONING DURING CONSTRUCTION SHALL BE PROTECTED, BY AN APPROPRIATE SEDIMENT CONTROL MEASURE.
- ALL TEMPORARY EROSION AND SEDIMENT CONTROL MEASURES SHALL BE REMOVED WITHIN 30 DAYS AFTER FINAL SITE STABILIZATION IS ACHIEVED OR AFTER THE TEMPORARY MEASURES ARE NO LONGER NEEDED.
- ALL TEMPORARY AND PERMANENT EROSION CONTROL MEASURES MUST BE MAINTAINED AND REPAIRED AS NEEDED. THE PROPERTY OWNER SHALL BE ULTIMATELY RESPONSIBLE FOR MAINTENANCE AND REPAIR.
- A STABILIZED MAT OF AGGREGATE UNDERLAIN WITH FILTER CLOTH (OR OTHER APPROPRIATE MEASURE) SHALL BE LOCATED AT ANY POINT WHERE TRAFFIC WILL BE ENTERING OR LEAVING A CONSTRUCTION SITE TO OR FROM A PUBLIC RIGHT-OF-WAY, STREET, ALLEY OR PARKING AREA. ANY SEDIMENT OR SOIL REACHING AN IMPROVED PUBLIC RIGHT-OF-WAY, STREET, ALLEY OR PARKING AREA SHALL BE REMOVED BY SCRAPING OR STREET CLEANING AS ACCUMULATIONS WARRANT AND TRANSPORTED TO A CONTROLLED SEDIMENT DISPOSAL AREA. THE COSTS ASSOCIATED WITH THESE ITEMS SHALL BE INCLUDED IN THE COST OF THE CONTRACT.
- SOIL STOCKPILES SHALL NOT BE LOCATED IN A FLOOD PRONE AREA OR A DESIGNATED BUFFER PROTECTING WATERS OF THE UNITED STATES OR ISOLATED WATERS OF LAKE COUNTY.
- IF DEWATERING SERVICES ARE USED, ADJOINING PROPERTIES AND DISCHARGE LOCATIONS SHALL BE PROTECTED FROM EROSION. DISCHARGES SHALL BE ROUTED THROUGH AN EFFECTIVE SEDIMENT CONTROL MEASURE (e.g. SEDIMENT TRAP, SEDIMENT BASIN, OR OTHER APPROPRIATE MEASURES.)
- THE EROSION CONTROL MEASURES INDICATED ON THE PLANS ARE THE MINIMUM REQUIREMENTS. ADDITIONAL MEASURES MAY BE REQUIRED, AS DIRECTED BY THE ENGINEER OR GOVERNING AGENCY.
- SEEDING, CLASS 1 WITH SLOPE PROTECTION WILL BE USED ON ALL DISTURBED AREAS.

SCHEDULE OF EROSION CONTROL QUANTITIES

SEDIMENT CONTROL, SILT FENCE	FOOT	991
TEMPORARY DITCH CHECK	EACH	4
TEMPORARY EROSION CONTROL SEEDING	POUND	124

LEGEND

- TEMPORARY DITCH CHECKS
- SEDIMENT CONTROL, SILT FENCE



11.0014.060749 - TEMP DRG(S) 060749.DWG - EROS-SH6
 PLOT DATE: 5/10/07 9:20 AM By: J. Woodman
 Copyright © 2006, By: Baxter & Woodman, Inc.
 State of Illinois - Professional Design Firm
 License No. - 184-001121 - Expires 4-10-07

CONSULTANTS	REV. NO.	DATE	DESCRIPTION
	1	4/4/07	VILLAGE/IDOT/LCDOT/METRA REVIEW
	2	5/10/07	VILLAGE/IDOT/LCDOT/METRA REVIEW

* - REFER TO EQUIPMENT MANUFACTURER'S SHOP DRAWINGS

BAXTER & WOODMAN
 Consulting Engineers

Baxter & Woodman
 Crystal Lake, Illinois 815.459.1200
 Burlington, Massachusetts 262.768.7234
 Mokena, Illinois 708.476.2090
 DeKalb, Illinois 815.797.3111
 Crystal Lake, Illinois 847.228.0088
 Rockford, Illinois 815.489.1551
 Plainfield, Illinois 815.609.7425

**VILLAGE OF ROUND LAKE, ILLINOIS
 METROPOLITAN CORRIDOR BEAUTIFICATION
 AND PEDESTRIAN ACCESS ACCOMMODATION PROJECT**

**METROPOLITAN CORRIDOR
 EROSION AND SEDIMENT CONTROL PLAN
 STA. 1+00 TO STA. 10+00**

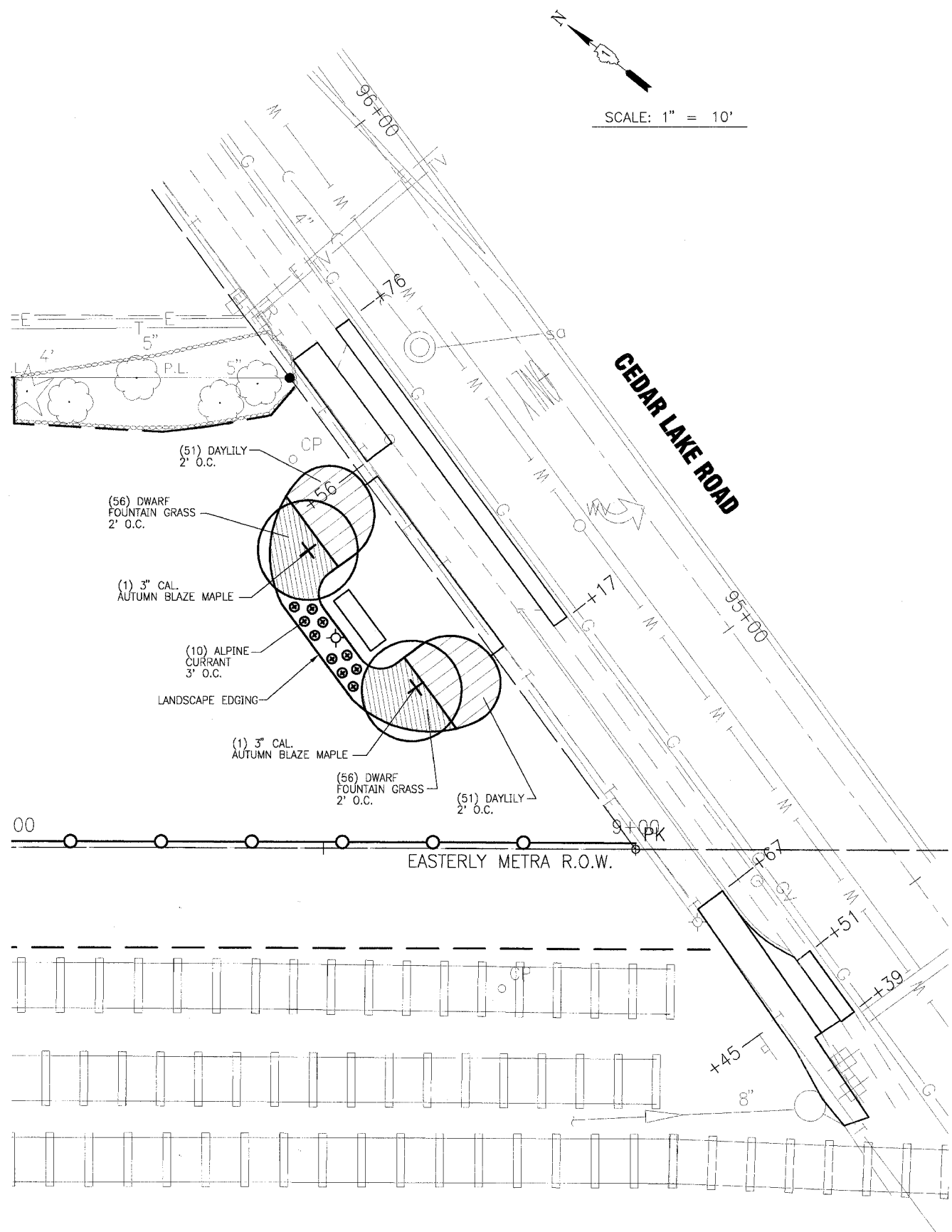
DESIGNED BY	MWP	SCALE	HORIZ: 1" = 20'
DRAWN BY	UKB	PROJECT NO.	060749
CHECKED BY	MWP	SHEET NO.	8 OF 18
DATE	2-09-07		

LANDSCAPING NOTES

1. PLANT NAMES CONFORM TO THE NAMES GIVEN IN 'STANDARDIZED PLANT NAMES' 1942 EDITION, PREPARED BY THE AMERICAN JOINT COMMITTEE ON HORTICULTURE NOMENCLATURE. NAMES OR VARIETIES NOT INCLUDED THEREIN CONFORM GENERALLY WITH NAMES ACCEPTED IN THE NURSERY TRADE. PLANT MATERIAL TO BE SECURED FROM NURSERIES WITHIN THE NORTHERN ILLINOIS AREA.
2. SHREDDED BARK MULCH 3" - THE RATE OF APPLICATION SHALL BE FOR A FULL THREE INCH DEPTH (3") OF MULCH TO BE APPLIED TO THE PLANTING BED. FINAL GRADE OF MULCH AT THE WALK EDGE (AFTER SETTLING OCCURS) SHOULD BE ONE INCH (1") BELOW THE ADJACENT WALK AND SEATING AREA.
3. TREES WITH WIRE BASKETS SHALL HAVE THE TOP 1/2 OF THE WIRE BASKET REMOVED PRIOR TO PLANTING.
4. PLANTING BED PREPARATION: REMOVE EXISTING CONCRETE, STONE AND SOIL TO A DEPTH OF FIFTEEN INCHES (15"). REPLACE TO GRADE WITH A MINIMUM OF TWELVE INCHES (12") OF TOP SOIL, APPROVED BY THE VILLAGE AND ENGINEER. TOP DRESS THE ENTIRE BED WITH A TWO INCH LAYER (2") OF PEAT MOSS ALONG WITH A ONE INCH LAYER (1") OF MUSHROOM COMPOST AND A GRANULAR FERTILIZER AND SHALL BE INCLUDED IN THE LANDSCAPE FILL SOIL PAY ITEM. THE ENTIRE BED SHALL BE ROTO-TILLED JUST PRIOR TO THE INSTALLATION OF PLANTS. THE DAYLILLIES AND THE DWARF FOUNTAIN GRASS WILL BE PLANTED TWO FEET (2') ON CENTER. THE TURF EDGE OF THE BED SHALL BE NEATLY EDGED TO A DEPTH OF FOUR INCHES (4").
5. THE PLANTS WILL BE INSPECTED BY THE VILLAGE OF ROUND LAKE PRIOR TO PLANTING. ALL PLANT MATERIAL WILL BE GUARANTEED FOR ONE YEAR (1) AFTER ACCEPTANCE.

LANDSCAPING QUANTITIES

TREES CODE NUMBER	DESCRIPTION	COMMON NAME	BOTANICAL NAME	SIZE (CALIPER)	UNIT	QUANTITY
A2000118	TREE, ACER FREEMANII AUTUMN BLAZE (AUTUMN BLAZE FREEMAN MAPLE) 3" CALIPER, BALLED AND BURLAPPED	Autumn Blaze Freeman Maple	Acer x freemanii 'Autumn Blaze'	3.0"	EACH	2
SHRUBS CODE NUMBER	DESCRIPTION	COMMON NAME	BOTANICAL NAME	SIZE (FT. HT.)	UNIT	QUANTITY
C2006236	SHRUB, RIBES ALPINUM (ALPINE CURRANT), 3' HEIGHT, BALLED AND BURLAPPED	Alpine Currant	Ribes alpinum	3'	EACH	10
PERENNIALS CODE NUMBER	DESCRIPTION	COMMON NAME	BOTANICAL NAME	SIZE (GAL.)	UNIT	QUANTITY
X0301407	PERENNIAL PLANTS, GALLON POT	Dwarf Fountain Grass	Pennisetum alopecuroides 'Hameln'	1 GAL.	100/UNIT	1.12
		Little Wine Cup Daylily	Hemerocallis 'Little Wine Cup'	1 GAL.	100/UNIT	1.02
MISCELLANEOUS CODE NUMBER	DESCRIPTION	COMMON NAME	BOTANICAL NAME	SIZE	UNIT	QUANTITY
K1005481	SHREDDED BARK MULCH 3"	Shredded Bark Mulch		3" depth	SQ. YD.	59
K1003455	LANDSCAPE FILL SOIL	Landscape Fill Soil			CU. YD.	20



I:\PROJECTS\060749\TIP\DWG\060749A\PLN.dwg - LANDSCAPE-SH9
 Plotted: 5-10-07 @ 8:33am By: 560kar
 Copyright © 2006, By Baxter & Woodman, Inc.
 State of Illinois - Professional Design Firm
 License No. - 184-001121 - Expires: 4-30-07

CONSULTANTS	REV. NO.	DATE	DESCRIPTION
	1	4/4/07	VILLAGE/IDOT/LCDOT/METRA REVIEW
	2	5/10/07	VILLAGE/IDOT/LCDOT/METRA REVIEW

* - REFER TO EQUIPMENT MANUFACTURER'S SHOP DRAWINGS

BAXTER & WOODMAN
 Consulting Engineers

Baxter & Woodman
 Oriental Lake, Illinois 815.459.1280
 Burlington, Wisconsin 262.763.7834
 Mokena, Illinois 708.478.2090
 DeKalb, Illinois 815.787.3111
 Grayslake, Illinois 815.459.5988
 Rockford, Illinois 815.459.1551
 Plainfield, Illinois 815.609.7425

VILLAGE OF ROUND LAKE, ILLINOIS
METROPOLITAN CORRIDOR BEAUTIFICATION
AND PEDESTRIAN ACCESS ACCOMMODATION PROJECT

METROPOLITAN CORRIDOR
LANDSCAPE PLAN
STA. 8+00 TO STA. 9+50

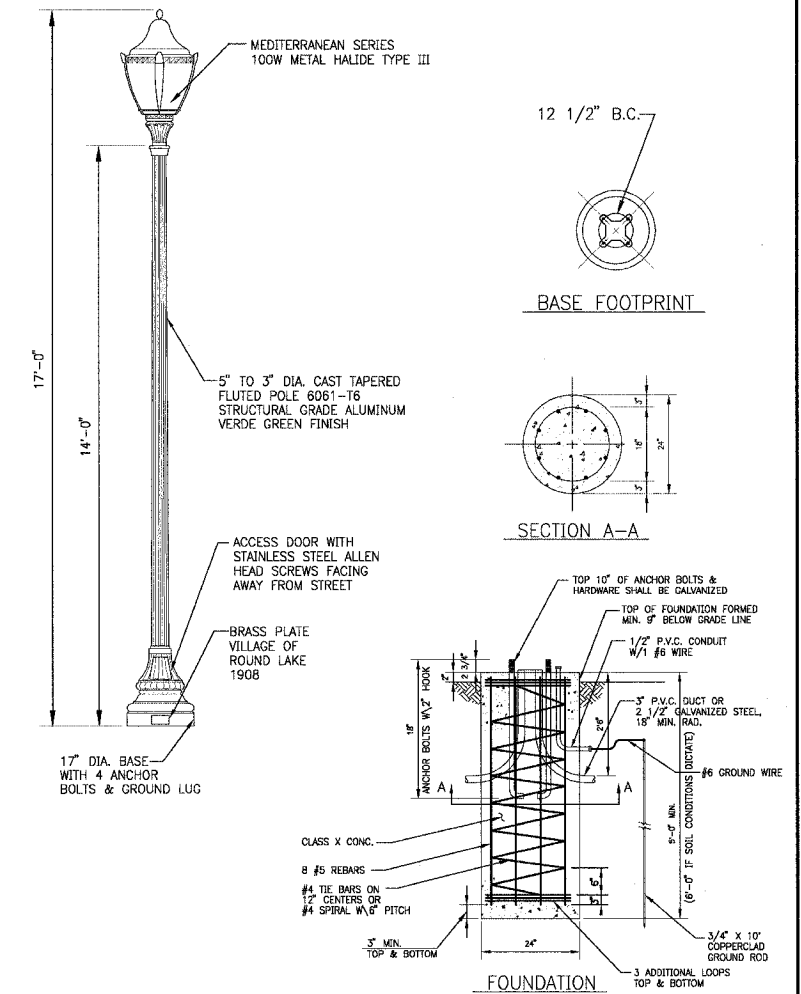
DESIGNED BY	MWP	SCALE	HORIZ: 1"=10'
DRAWN BY	UKB	PROJECT NO.	060749
CHECKED BY	MWP	SHEET NO.	9 OF 18
DATE	2-09-07		

LIGHTING QUANTITIES

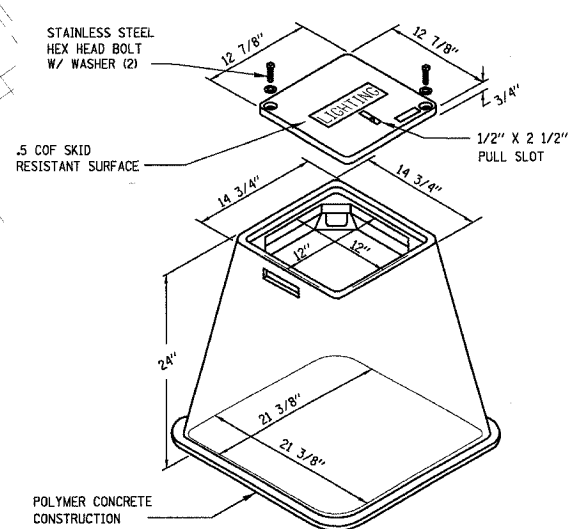
ITEM NO.	PAY ITEM DESCRIPTION	UNIT	QUANTITY
81400735	Handhole, Composite Concrete Special	EACH	1
81603040	Unit Duct 600 V., 2-1/2" Dia. Polyethylene (XLP-Type USE) 1' Dia. Polyethylene	FOOT	50
81702120	Electric Cable in Conduit, 600 V., (XLP-Type Use) 1/2", No. 8	FOOT	60
81702130	Electric Cable in Conduit, 600 V., (XLP-Type Use) 1/2", No. 6	FOOT	120
81900200	Trench and Backfill for Electrical Work	FOOT	40
83600210	Lighting Pole Foundation, 24" Diameter (Special)	FOOT	5
	Luminaire, Metal Halide, 100 Watt, Type III, Special	EACH	1
	Light Pole, Aluminum, 14', Special	EACH	1

LIGHTING NOTES

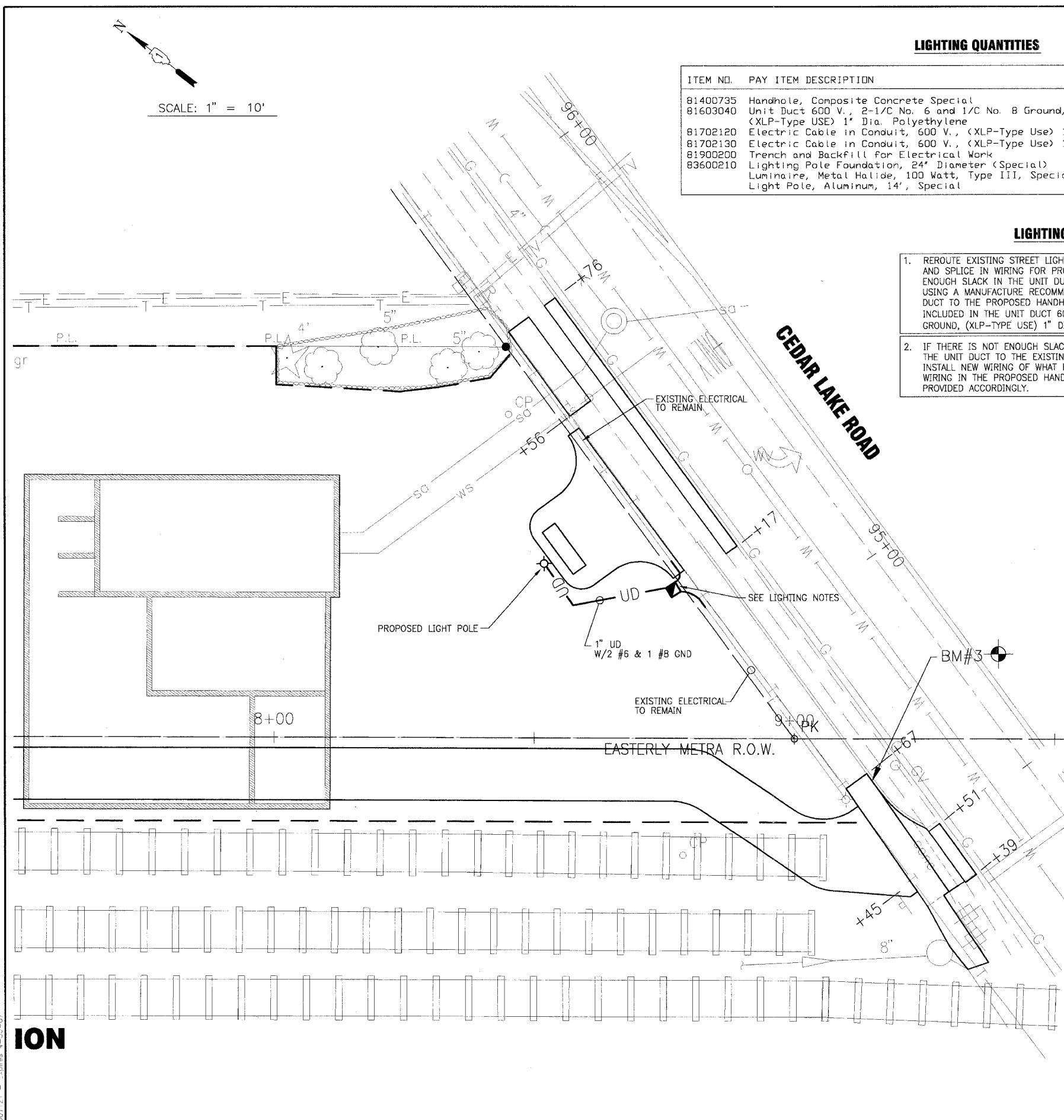
1. REROUTE EXISTING STREET LIGHTING UNIT DUCT TO PROPOSED HANDHOLE AND SPLICE IN WIRING FOR PROPOSED LIGHT POLE. IF THERE IS NOT ENOUGH SLACK IN THE UNIT DUCT ADD WHAT EVER LENGTH IS NEEDED BY USING A MANUFACTURE RECOMMENDED SPLICE KIT TO EXTEND THE UNIT DUCT TO THE PROPOSED HANDHOLE. COST OF ADDITIONAL UNIT DUCT IS INCLUDED IN THE UNIT DUCT 600 V., 2-1/2" NO. 6 AND 1/2" NO. 8 GROUND, (XLP-TYPE USE) 1" DIA. POLYETHYLENE PAY ITEM.
2. IF THERE IS NOT ENOUGH SLACK IN THE WIRING, REMOVE THE WIRING IN THE UNIT DUCT TO THE EXISTING STREET LIGHT POLE TO THE SOUTH AND INSTALL NEW WIRING OF WHAT EVER LENGTH IS REQUIRED TO SPLICE THE WIRING IN THE PROPOSED HANDHOLE. QUANTITIES FOR THIS WORK ARE PROVIDED ACCORDINGLY.



LIGHT POLE DETAIL
NO SCALE



LIGHTING HANDHOLE DETAIL
NO SCALE



REV. NO.	DATE	DESCRIPTION
1	4/4/07	VILLAGE/IDOT/LCDOT/METRA REVIEW
2	5/10/07	VILLAGE/IDOT/LCDOT/METRA REVIEW

CONSULTANTS:

REFER TO EQUIPMENT MANUFACTURER'S SHOP DRAWINGS

BAXTER & WOODMAN
Consulting Engineers

Baxter & Woodman
Crystal Lake, Illinois 815.459.1200
Durlington, Wisconsin 262.763.2634
Mokena, Illinois 708.478.2090
DeKalb, Illinois 815.787.3111
Cragville, Illinois 847.323.6989
Rockford, Illinois 815.489.1551
Plainfield, Illinois 815.609.7425

VILLAGE OF ROUND LAKE, ILLINOIS
METROPOLITAN CORRIDOR BEAUTIFICATION
AND PEDESTRIAN ACCESS ACCOMMODATION PROJECT

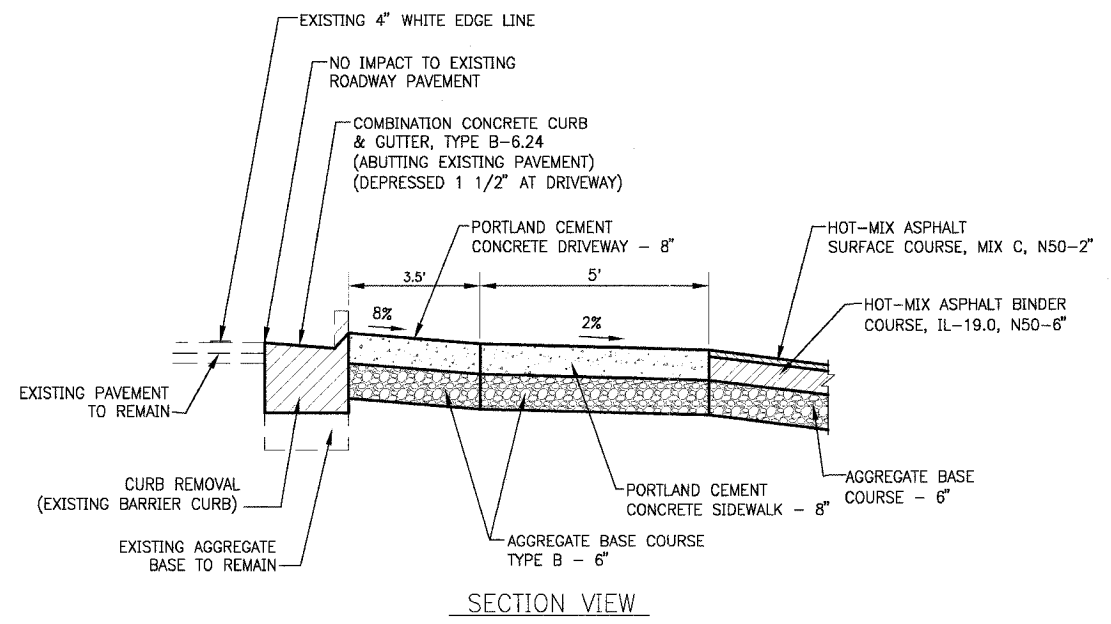
METROPOLITAN CORRIDOR
LIGHTING PLAN
STA. 8+00 TO STA. 9+50

DESIGNED BY: JLR
DRAWN BY: UKB
CHECKED BY: MDK
DATE: 2-09-07

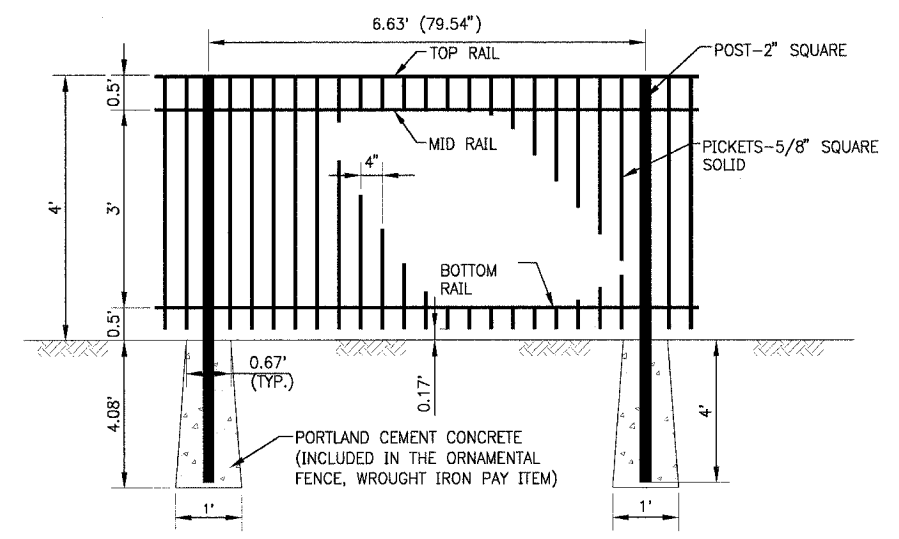
SCALE: HORIZ: 1"=10'
PROJECT NO.: D60749
SHEET NO.: 10 OF 18

ION
 PLOTTED: 5-10-07 @ 8:34am By: 5600ar
 Copyright © 2006, By Baxter & Woodman, Inc.
 State of Illinois - Professional Design Firm
 License No. 181-001121 - Expires 4-30-07

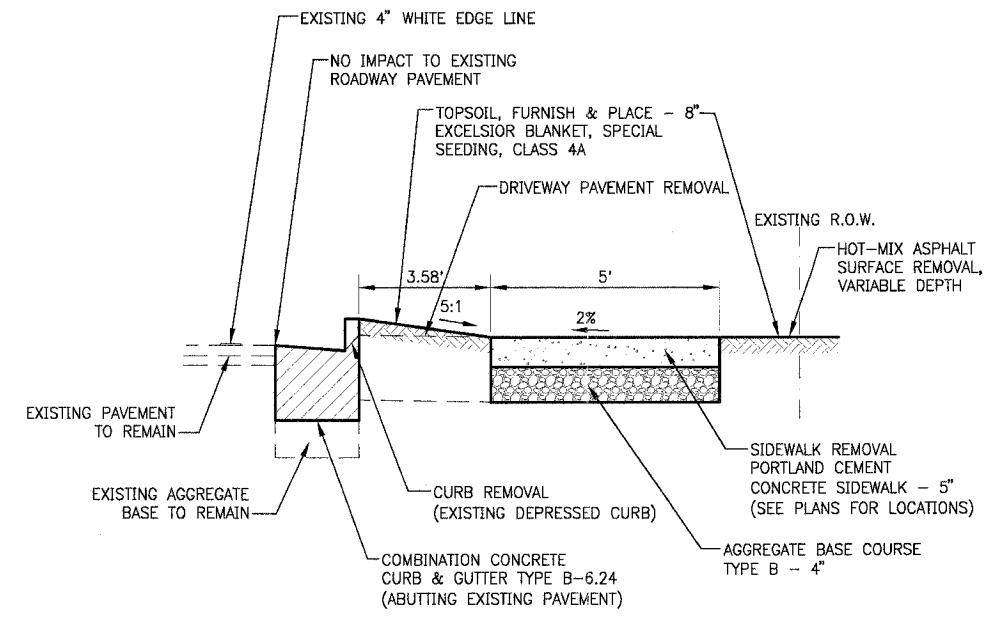
F.A. ROUTE NO.	SECTION	COUNTY	TOTAL SHEETS	SHEET NO.
06-00028-00-LS		LAKE	18	11
STA.	TO STA.		FED. ROAD DIST. NO.	FED AID PROJECT
C-91-150-07			ILLINOIS	TE-00D1(757)
CONTRACT NO.: 83930				



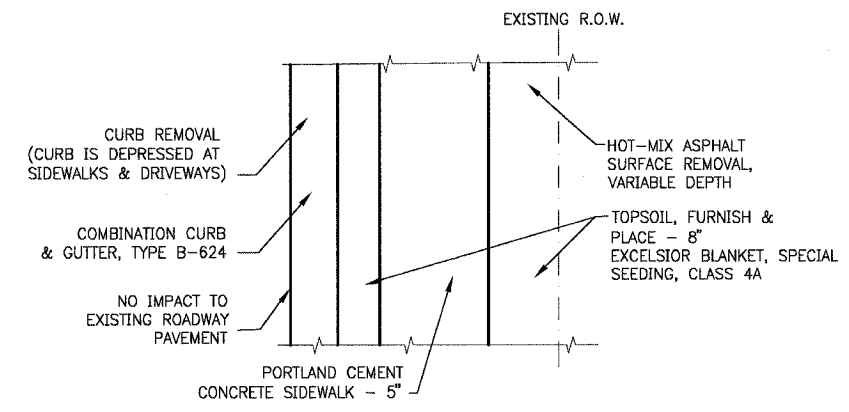
SECTION VIEW
PORTLAND CEMENT CONCRETE DRIVEWAY - 8"
DETAIL
NO SCALE



ORNAMENTAL FENCE, WROUGHT IRON
NO SCALE



SECTION VIEW
CURB REMOVAL, SIDEWALK REMOVAL, COMBINATION CONCRETE CURB AND GUTTER, TYPE B-6.24 (ABUTTING EXISTING PAVEMENT) AND PORTLAND CEMENT CONCRETE SIDEWALK - 5"
DETAIL
NO SCALE



PLAN VIEW

I:\A\016\K\060749 - IPEP\DWG\060749-MISC-0615.dwg - SH11
 Plot: 5-09-07 @ 9:43am By: 560war
 Copyright © 2006, By Baxter & Woodman, Inc.
 State of Illinois - Professional Design Firm
 License No. - 184-001121 - Expires 4-30-07

CONSULTANTS	REV. NO.	DATE	DESCRIPTION
	1	4/4/07	VILLAGE/IDOT/LCDOT/METRA REVIEW
	2	5/10/07	VILLAGE/IDOT/LCDOT/METRA REVIEW

* - REFER TO EQUIPMENT MANUFACTURER'S SHOP DRAWINGS

BAXTER & WOODMAN
Consulting Engineers

Baxter & Woodman
Crystal Lake, Illinois 815.459.1200
Burlington, Wisconsin 262.763.7854
Mokena, Illinois 708.478.2090
DeKalb, Illinois 815.787.3111
Graylake, Illinois 847.223.6088
Rockford, Illinois 815.489.1551
Plainfield, Illinois 815.609.7425

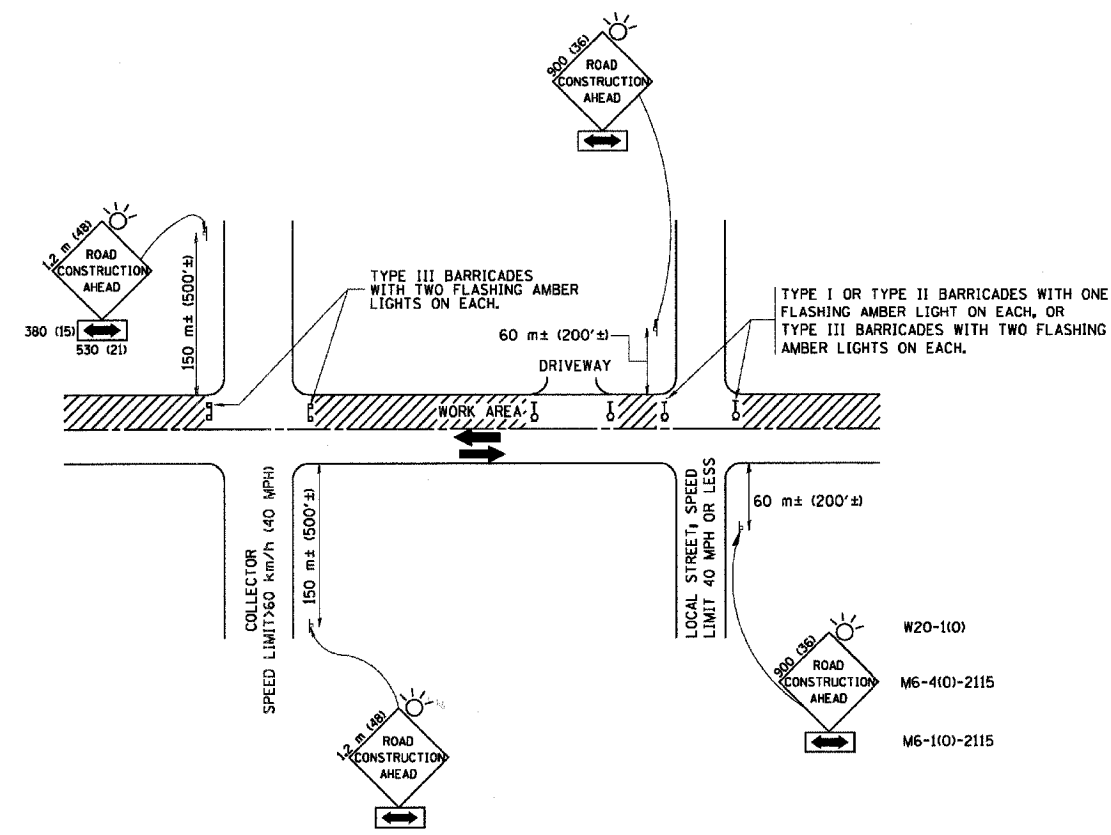
VILLAGE OF ROUND LAKE, ILLINOIS
METROPOLITAN CORRIDOR BEAUTIFICATION
AND PEDESTRIAN ACCESS ACCOMMODATION PROJECT

DESIGNED BY: MWP
DRAWN BY: UKB
CHECKED BY: MWP
DATE: 2-09-07

SCALE: NONE
PROJECT NO.: 060749
SHEET NO.: 11 OF 18

MISCELLANEOUS DETAILS

11 OF 18



TRAFFIC CONTROL AND PROTECTION FOR SIDE ROADS, INTERSECTIONS, AND DRIVEWAYS

NOTES:

- A. FOR NO LANE RESTRICTION ON THE SIDE ROAD OR DRIVEWAYS**
- SIDE ROAD WITH A SPEED LIMIT OF 60 km/h (40 MPH) OR LESS AS SHOWN ON THE DRAWING AND AS DIRECTED BY THE ENGINEER:
 - ONE ROAD CONSTRUCTION AHEAD SIGN 300x360 (36x36) WITH A FLASHER AND FLAG MOUNTED ON IT APPROXIMATELY 60 m (200') IN ADVANCE OF THE MAIN ROUTE.
 - THE CLOSED PORTION OF THE MAIN ROUTE SHALL BE PROTECTED BY BLOCKING WITH TYPE I, TYPE II OR TYPE III BARRICADES, 1/3 OF THE CROSS SECTION OF THE CLOSED PORTION.
 - SIDE ROAD WITH A SPEED LIMIT GREATER THAN 60 km/h (40 MPH) AS SHOWN ON THE DRAWING AND AS DIRECTED BY THE ENGINEER:
 - ONE ROAD CONSTRUCTION AHEAD SIGN 1.2 m x 1.2 m (48x48) WITH A FLASHER MOUNTED ON IT APPROXIMATELY 150 m (500') IN ADVANCE OF THE MAIN ROUTE.
 - THE CLOSED PORTION OF THE MAIN ROUTE SHALL BE PROTECTED BY BLOCKING WITH TYPE III BARRICADES, 1/2 OF THE CROSS SECTION OF THE CLOSED PORTION.
 - WHEN THE SIDE ROAD LIES BETWEEN THE BEGINNING OF THE MAINLINE SIGNING AND THE WORK ZONE, A SINGLE HEADED ARROW (M6-1) SHALL BE USED IN LIEU OF THE DOUBLE HEADED ARROW (M6-4).
- B. FOR A LANE CLOSURE ON A SIDE ROAD OR DRIVEWAY:**
- USE APPLICABLE PORTIONS OF THE TYPICAL APPLICATION OF TRAFFIC CONTROL DEVICES (STD. 701501, STD. 701506 OR THE APPROPRIATE STANDARD). THE SPACING OF SIGNS AND BARRICADES SHALL BE ADJUSTED FOR FIELD CONDITIONS AS DIRECTED BY THE ENGINEER. THE DIRECTIONAL ARROW SHALL BE COVERED OR REMOVED WHEN NO LONGER CONSISTENT WITH THE SIDE ROAD LANE CLOSURE.
- C. ADVANCE WARNING SIGNS ARE TO BE OMITTED ON DRIVEWAY UNLESS OTHERWISE NOTED.**
- D. THE TRAFFIC CONTROL AND PROTECTION FOR SIDE ROADS, INTERSECTIONS, AND DRIVEWAYS SHALL BE INCIDENTAL TO THE COST OF SPECIFIED TRAFFIC CONTROL STANDARDS OR ITEMS.**

REVISIONS	
NAME	DATE
LHA	6/89
T. RAMMACHER	09/08/94
J. OBERLE	10/18/95
A. HOUSEH	03/06/96
A. HOUSEH	10/15/96
T. RAMMACHER	01/06/00

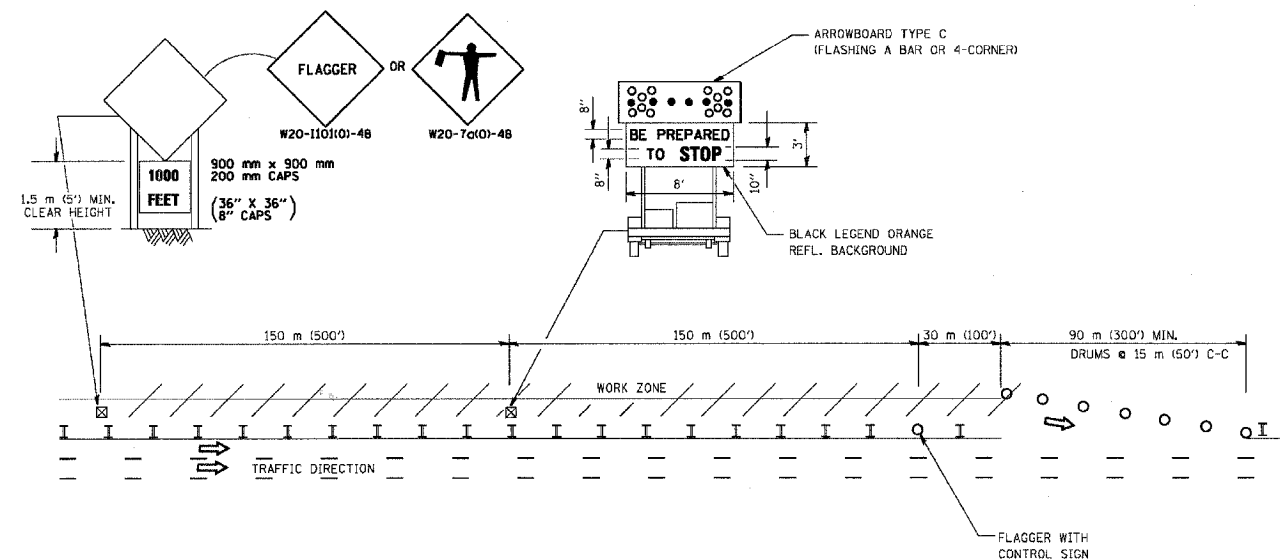
ILLINOIS DEPARTMENT OF TRANSPORTATION
**TRAFFIC CONTROL AND PROTECTION
 FOR
 SIDE ROADS, INTERSECTIONS, AND
 DRIVEWAYS**

SCALE: DATE: 2/15/2006 DRAWN BY: CHECKED BY: TC-10

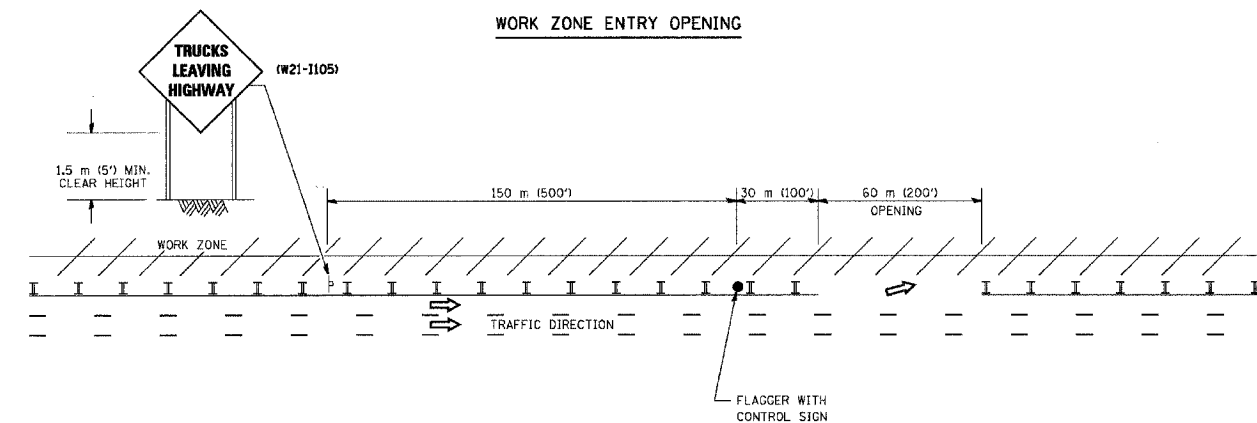
I:\ROULEA\060749.TIF\DWG\060749-5H12.dwg - 5/12
 Plotted: 5-09-07 @ 9:47am By: S600ar
 Copyright © 2006, by Baiter & Woodman, Inc.
 State of Illinois - Professional Design Firm
 License No. - 184-001121 - Expires 4-30-07

SIGNING FOR FLAGGING OPERATIONS AT WORK ZONE OPENINGS

WORK ZONE EXIT OPENING



WORK ZONE ENTRY OPENING



NOTES:

1. The Arrowboard, the Flagger Ahead trailer mounted sign, and the Trucks Leaving Highway sign shall be removed or turned away from traffic and the exit and entry openings shall be closed when the flagging operation ceases.
2. Work Zone Exit Openings should be a minimum of one half mile apart.
3. Exiting the work zone at any place other than at a Work Zone Exit Opening will be prohibited.
4. All vehicles shall enter the work zone at entry openings, using their turn signals to warn motorists

ALL DIMENSIONS ARE IN MILLIMETERS (INCHES) UNLESS OTHERWISE SHOWN

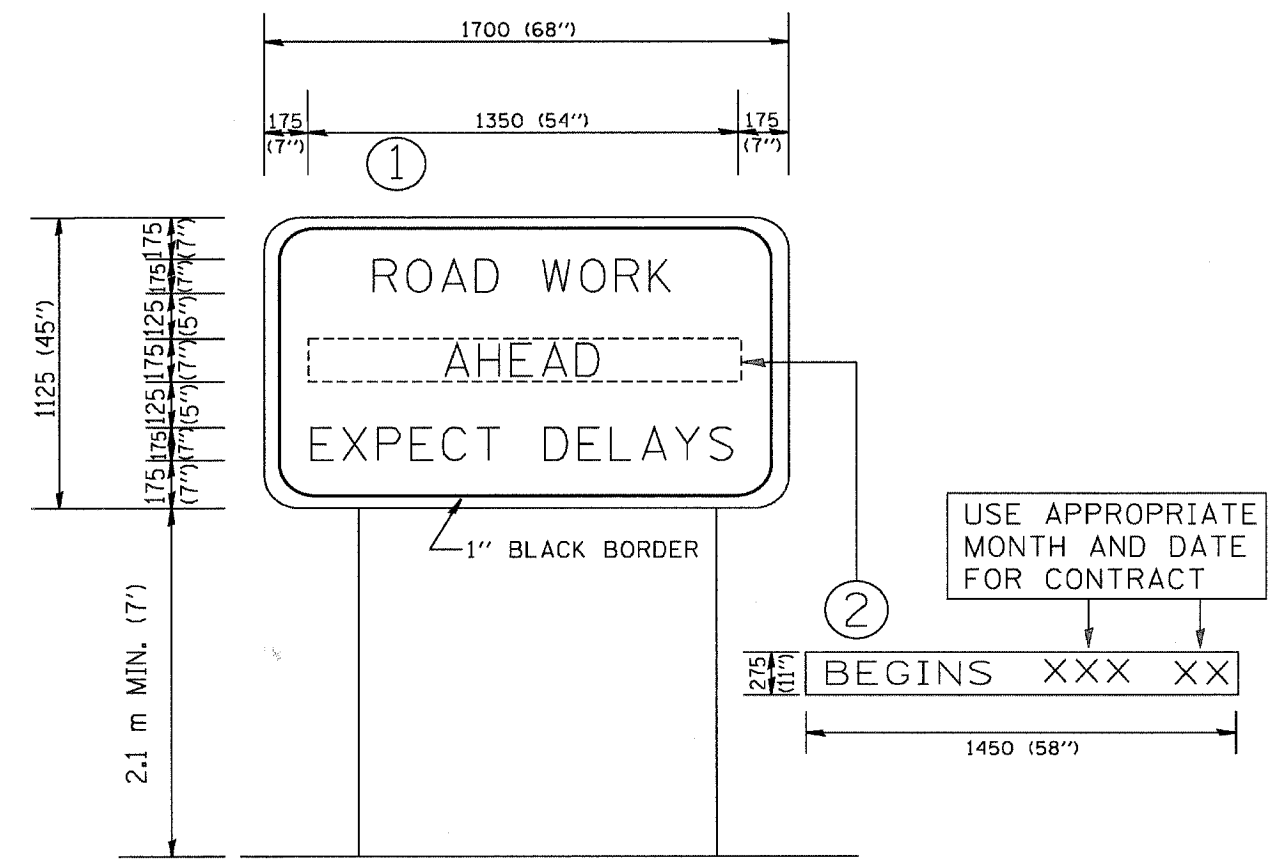
REVISIONS	
NAME	DATE
DWS	8/98
JAF	4/03
JAF	2/06

ILLINOIS DEPARTMENT OF TRANSPORTATION
SIGNING FOR FLAGGING OPERATIONS
AT WORK ZONE OPENINGS

SCALE: NONE
DATE: 3/1/2006

DRAWN BY CADD
CHECKED BY
TC-18

CONTRACT NO.: 83930



NOTES:

1. USE BLACK LETTERING ON ORANGE BACKGROUND.
2. ERECT SIGNS IN ADVANCE OF THE LOCATION FOR THE "ROAD CONSTRUCTION AHEAD" SIGN AT LOCATIONS AS DIRECTED BY THE ENGINEER.
3. ERECT SIGN ① WITH INSTALLED PANEL ② ONE WEEK PRIOR TO THE START OF CONSTRUCTION.
4. REMOVE PANEL ② SOON AFTER THE START OF CONSTRUCTION.
5. SEE SPECIAL PROVISION FOR "TEMPORARY INFORMATION SIGNING" FOR ADDITIONAL INFORMATION.
6. ONE SIGN ASSEMBLY EQUALS 2.3 SQ. M. (25.70 SQ. FT.)

ALL DIMENSIONS ARE IN MILLIMETERS (INCHES) UNLESS OTHERWISE SHOWN.

REVISIONS	
NAME	DATE
R. MIRS	9-15-97
R. MIRS	12-11-97
T. RAMMACHER	2-2-99

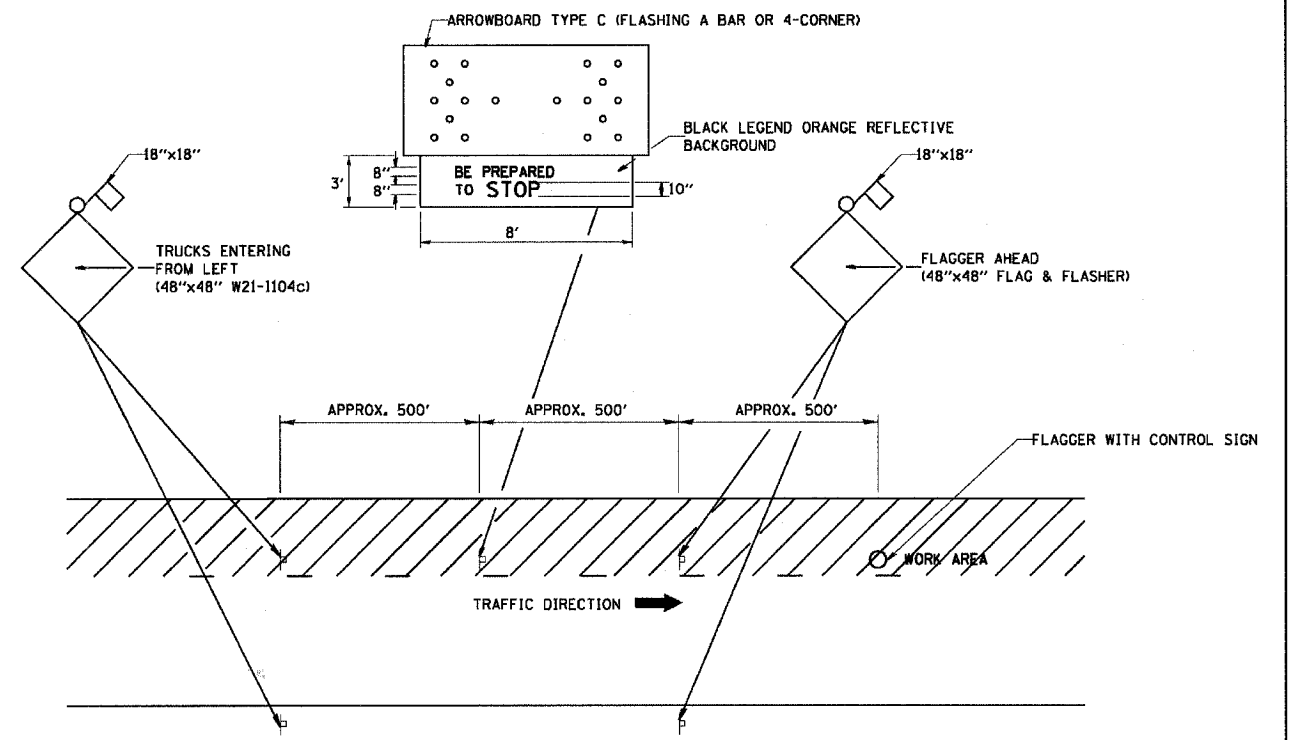
ILLINOIS DEPARTMENT OF TRANSPORTATION
TEMPORARY INFORMATION SIGNING

SCALE:
 DATE: 2/15/2006

DRAWN BY DESIGN
 CHECKED BY
 TC22

I:\P\0114\062749_TIEP\DWG\062749-SH14.dwg -- SH14
 Plotted: 5/19/07 @ 9:59am By: 550kar
 Copyright ©2006, By Barker & Woodman, Inc.
 State of Illinois - Professional Design Firm
 License No. 184-C01121 - Expires 4-30-07

CONTRACT NO.: 83930



METHOD OF FLAGGING

NOTE:

1. SIGNS SHALL BE MOUNTED AT A MINIMUM CLEARANCE HEIGHT OF 5 FEET
2. ALL SIGNS SHALL BE REMOVED WHEN THE FLAGGING OPERATION CEASES.
3. THIS CASE ALSO APPLIES WHEN THE WORK ZONE IS ON THE RIGHT. UNDER THESE CONDITIONS "TRUCKS ENTERING FROM RIGHT" SIGNS SHALL BE SUBSTITUTED FOR "TRUCKS ENTERING FROM LEFT" SIGNS. ALSO THE ARROWBOARD AND "BE PREPARED TO STOP" SIGNS SHALL BE RELOCATED TO THE RIGHT SIDE OF THE ROAD.
4. WORK ZONE ACCESS POINTS SHOULD BE A MINIMUM OF ONE HALF MILE APART. MEDIAN WORK ZONE ACCESS POINTS SHOULD NOT BE LOCATED OPPOSITE OF EACH OTHER.
5. NIGHTTIME FLAGGING OPERATIONS: THE FLAG STATION SHALL BE LIGHTED WITH ADDITIONAL LIGHTS OTHER THAN STREET LIGHTS. THE FLAGGER CONTROL SIGN AND THE FLAGGER'S VEST SHALL BE REFLECTORIZED. IN ADDITION, THE FLAGGER SHALL HAVE A FLASHLIGHT OR LIGHTED WAND.

REVISIONS	
NAME	DATE
RAY RITCHIE	5/10/00

ILLINOIS DEPARTMENT OF TRANSPORTATION

METHOD OF FLAGGING

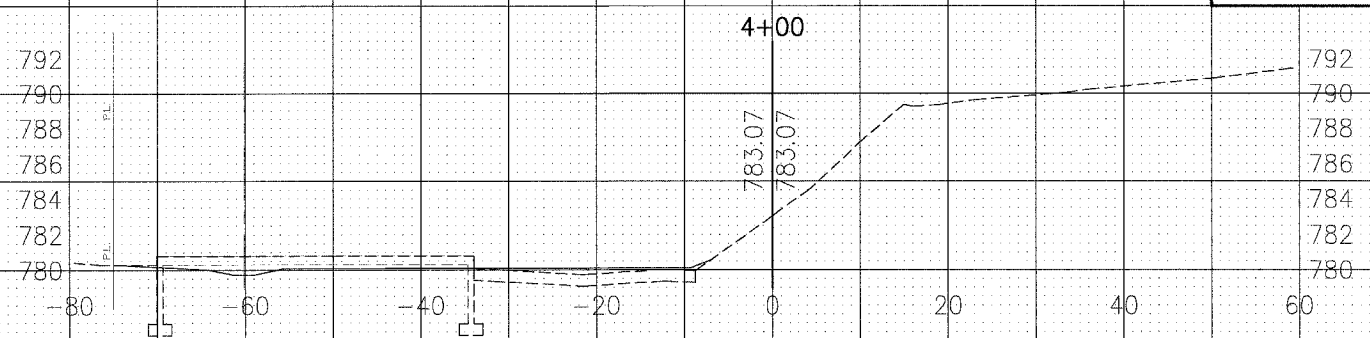
SCALE: NOT TO SCALE
DATE: 2/15/2006

DRAWN BY: C.A.D.
CHECKED BY:
BM-14

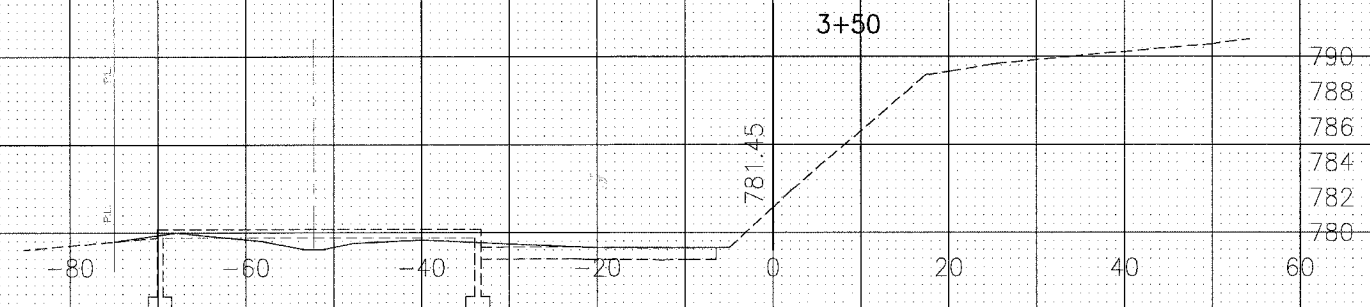
I:\POLK\060749_ITE\DWGS\060749-SHT5.dwg - SH15
 Plotted: 5:03:07 @ 10.03cm By: Woodman, Inc.
 Copyright © 2006, By: Bastier & Woodman, Inc.
 State of Illinois - Professional Design Firm
 License No. 184-001121 - Expires 4-30-07

FA ROUTE NO.	SECTION	COUNTY	TOTAL SHEETS	SHEET NO.
06-00028-00-LS	LAKE	LAKE	18	16
STA.	TO STA.		ILLINOIS	FED AID PROJECT
C-91-150-07				TE-001(757)
CONTRACT NO.: 83930				

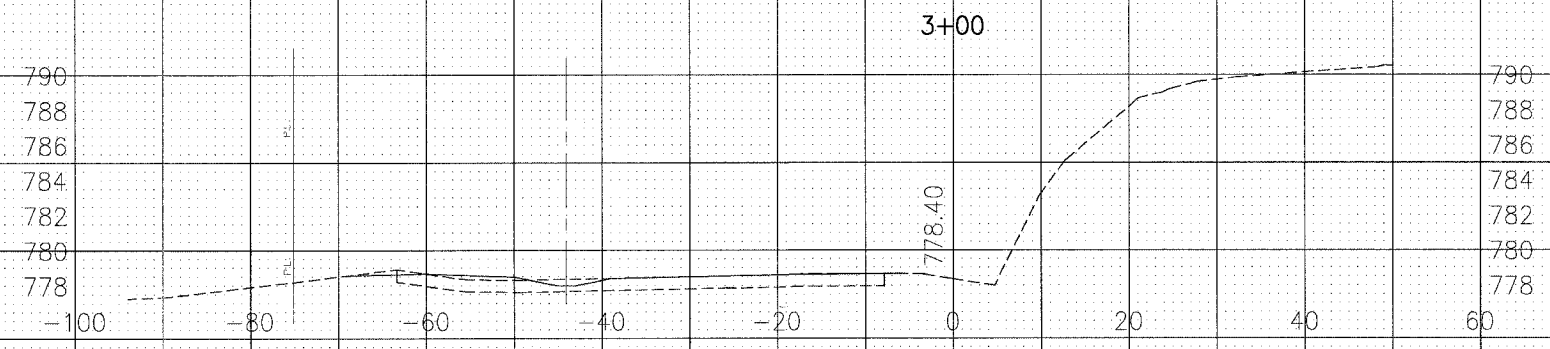
E.E. = 0.0 SF
R&DUM = 39.3 SF
EMB = 2 SF



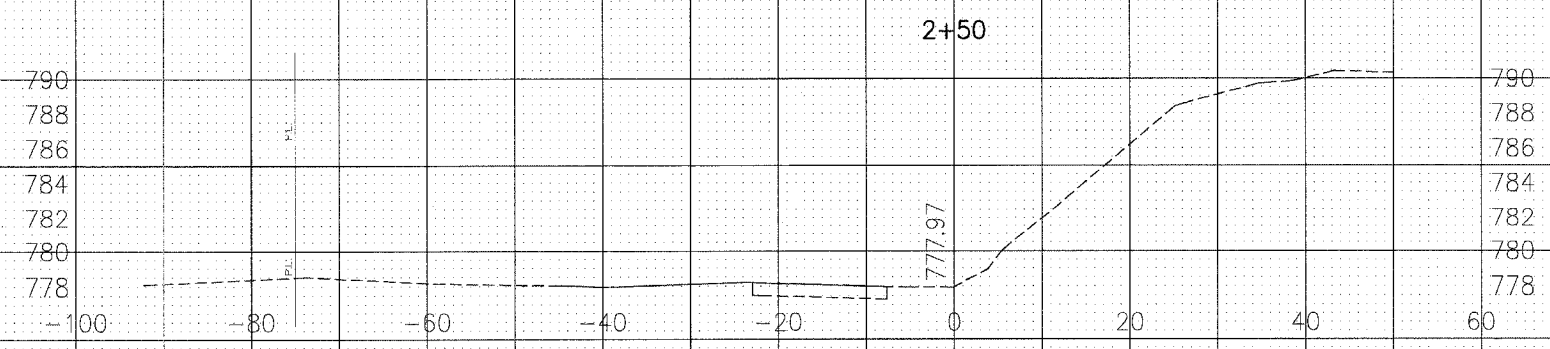
E.E. = 0.0 SF
R&DUM = 33.2 SF
EMB = 1.6 SF



E.E. = 0.0 SF
R&DUM = 5.8 SF
EMB = 2.1 SF



E.E. = 0.0 SF
R&DUM = 14.9 SF



LEGEND

- E.E. = EARTH EXCAVATION
- R&DUM = REMOVAL & DISPOSAL OF UNSUITABLE MATERIALS
- EMB = EMBANKMENT
- GRAN. STR. FILL = GRANULAR STRUCTURAL FILL

I:\3011\1065749-ITE\DWG\1060749-1SEC.dwg - 5/16
 Plotter: 5-09-07 @ 2:37pm Bv 56Mar
 Copyright © 2005, By Baxter & Woodman, Inc.
 State of Illinois - Professional Design Firm
 License No. - 184-001121 - Expires 4-30-07

CONSULTANTS	REV. NO.	DATE	DESCRIPTION
	1	4/4/07	VILLAGE/IDOT/LCDOT/METRA REVIEW
	2	5/10/07	VILLAGE/IDOT/LCDOT/METRA REVIEW

* - REFER TO EQUIPMENT MANUFACTURER'S SHOP DRAWINGS

Baxter & Woodman
 Crystal Lake, Illinois 815.450.1280
 Burlington, Wisconsin 262.763.7854
 Mokena, Illinois 708.478.2090
 DeKalb, Illinois 815.787.3111
 Crystal Lake, Illinois 815.221.6080
 Rockford, Illinois 815.489.1551
 Plainfield, Illinois 815.609.7425

**VILLAGE OF ROUND LAKE, ILLINOIS
 METROPOLITAN CORRIDOR BEAUTIFICATION
 AND PEDESTRIAN ACCESS ACCOMMODATION PROJECT**

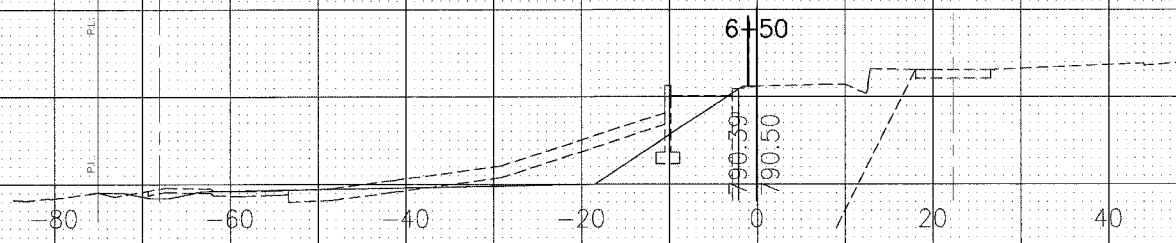
**CROSS SECTIONS
 METROPOLITAN CORRIDOR BEAUTIFICATION
 STA 2+50 TO STA 4+00**

DESIGNED BY	MWP	SCALE VERT: 1"=5'
DRAWN BY	KAR	HORIZ: 1"=10'
CHECKED BY	MWP	PROJECT NO.
DATE	2-09-07	060749
		SHEET NO.
		16 OF 18

FA. ROUTE NO.	SECTION	COUNTY	TOTAL SHEETS	SHEET NO.
06-00028-00-LS	LAKE	LAKE	18	17
STA.	TO STA.		FED. ROAD DIST. NO.	FED AID PROJECT
C-91-150-07			ILLINOIS	TE-001(757)
CONTRACT NO.: 83930				

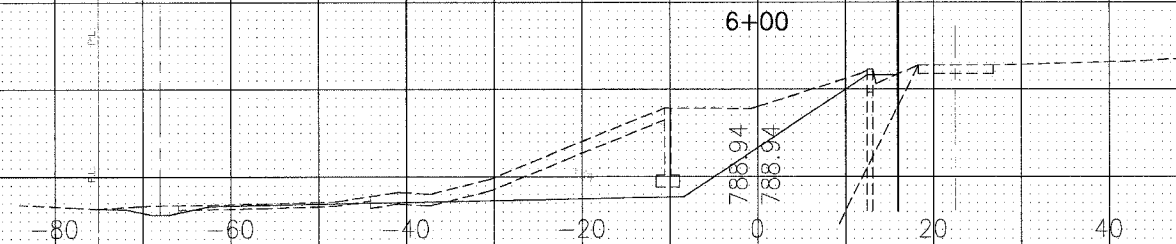
E.E. = 61 SF
R&DUM = 15 SF
GRAN. STR. FILL = 0 SF

792
790
788
786
784



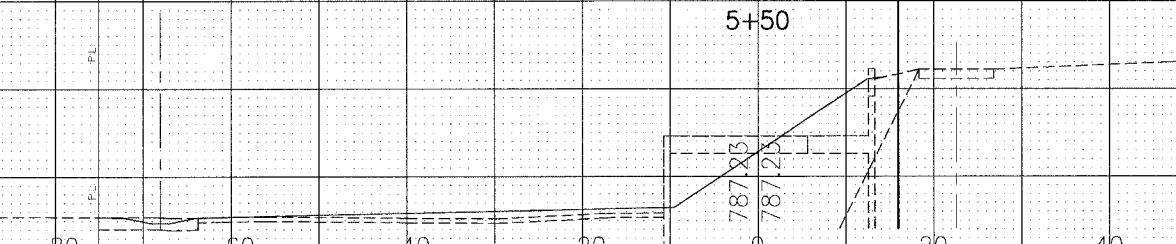
E.E. = 131 SF
R&DUM = 33 SF
GRAN. STR. FILL = 0 SF

792
790
788
786
784



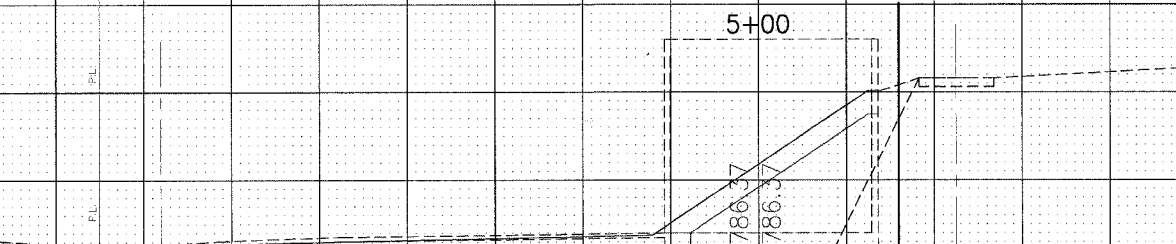
E.E. = 28 SF
R&DUM = 37 SF
GRAN. STR. FILL = 15 SF

792
790
788
786
784
782



E.E. = 11.25 SF
R&DUM = 28 SF
GRAN. STR. FILL = 91 SF

792
790
788
786
784
782



LEGEND

E.E. = EARTH EXCAVATION
R&DUM = REMOVAL & DISPOSAL OF UNSUITABLE MATERIALS
EMB = EMBANKMENT
GRAN. STR. FILL = GRANULAR STRUCTURAL FILL

E.E. = 14.0 SF
R&DUM = 26.6 SF
GRAN. STR. FILL = 91 SF

792
790
788
786
784
782
780



REV. NO.	DATE	DESCRIPTION
1	4/4/07	VILLAGE/IDOT/LCDOT/METRA REVIEW
2	5/10/07	VILLAGE/IDOT/LCDOT/METRA REVIEW

CONSULTANTS	REV. NO.	DATE	DESCRIPTION
	1	4/4/07	VILLAGE/IDOT/LCDOT/METRA REVIEW
	2	5/10/07	VILLAGE/IDOT/LCDOT/METRA REVIEW

BAXTER
WOODMAN
Consulting Engineers

Barter & Woodman
Crystal Lake, Illinois 815.459.1260
Burlington, Wisconsin 262.763.7834
Mokena, Illinois 708.478.2000
DeKalb, Illinois 815.797.3111
Orangefield, Illinois 815.253.5089
Rockford, Illinois 815.459.1551
Moline, Illinois 815.660.7425

VILLAGE OF ROUND LAKE, ILLINOIS
METROPOLITAN CORRIDOR BEAUTIFICATION
AND PEDESTRIAN ACCESS ACCOMMODATION PROJECT

CROSS SECTIONS
METROPOLITAN CORRIDOR BEAUTIFICATION
STA 4+50 TO STA 6+50

DESIGNED BY	SCALE VERT: 1"=5'
MWP	HORIZ: 1"=10'
DRAWN BY	PROJECT NO.
KAR	060749
CHECKED BY	SHEET NO.
MWP	17 OF 18
DATE	
2-09-07	

I:\GULIA\060749\REF\DWG\060749-XSEC.dwg - SH17
Pct: 5.08.07 @ 2:40pm By: 560ker
Copyright © 2006, By Barter & Woodman, Inc.
State of Illinois - Professional Design Firm
License No. - 184-301121 - Expires 4-30-07

FA ROUTE NO.	SECTION	COUNTY	TOTAL SHEETS	SHEET NO.
06-00028-00-LS	LAKE	LAKE	18	18
STA.	TO STA.		FED. ROAD DIST. NO.	FED AID PROJECT
C-91-150-07	ILLINOIS		C-91-150-07	TE-001(757)
CONTRACT NO.: 83930				

E.E. = 6 SF
R&DUM = 36 SF
EMB = 3 SF

794
792
790
-100 -80 -60 -40 -20 0 20 40 60

8+50

792.07
792.07

794
792
790

E.E. = 85.5 SF
R&DUM = 5 SF
EMB = 0 SF

792
790
788

8+00

792.24
792.24

792
790
788

E.E. = 104 SF
R&DUM = 6 SF
EMB = 11 SF

792
790
788

7+50

791.4
791.4

792
790
788

LEGEND

E.E. = EARTH EXCAVATION

R&DUM = REMOVAL & DISPOSAL OF UNSUITABLE MATERIALS

EMB = EMBANKMENT

GRAN. STR. FILL = GRANULAR STRUCTURAL FILL

E.E. = 96 SF
R&DUM = 10 SF
EMB = 12.5 SF

792
790
788
786

7+00

790.32
790.32

792
790
788
786

I:\BOLIVIA\060749_ITEF\DWG\060749-YS1C.dwg - S118
 Plotted: 5-09-07 @ 9:43am By: 560Bart
 Copyright © 2006, By: Baxter & Woodman, Inc.
 State of Illinois - Professional Design Firm
 License No. - 184-001121 - Expires 4-30-07

CONSULTANTS	REV. NO.	DATE	DESCRIPTION
	1	4/4/07	VILLAGE/IDOT/LCDOT/METRA REVIEW
	2	5/10/07	VILLAGE/IDOT/LCDOT/METRA REVIEW

* - REFER TO EQUIPMENT MANUFACTURER'S SHOP DRAWINGS

Baxter & Woodman
 Crystal Lake, Illinois 815.459.1280
 Burlington, Wisconsin 262.763.7334
 Mokena, Illinois 708.478.2090
 DeKalb, Illinois 815.787.3111
 Crystal Lake, Illinois 847.223.5088
 Rockford, Illinois 815.459.1551
 Plainfield, Illinois 815.609.7425

**VILLAGE OF ROUND LAKE, ILLINOIS
 METROPOLITAN CORRIDOR BEAUTIFICATION
 AND PEDESTRIAN ACCESS ACCOMMODATION PROJECT**

**CROSS SECTIONS
 METROPOLITAN CORRIDOR BEAUTIFICATION
 STA 7+00 TO STA 8+50**

DESIGNED BY	MWP	SCALE VERT: 1"=5'
DRAWN BY	KAR	HORIZ: 1"=10'
CHECKED BY	MWP	PROJECT NO. 060749
DATE	2-09-07	SHEET NO. 18 OF 18