

F. A. U. RTE.	SECTION	COUNTY	TOTAL SHEETS	SHEET NO.
3600	06-00103-00-FP	COOK	9	1
STA.		TO STA.		
FED. ROAD DIST. NO.	MILEAGE	FED. AID PROJECT		

CONTRACT #83942

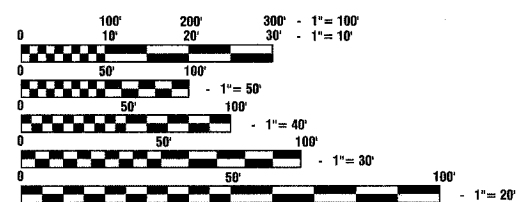
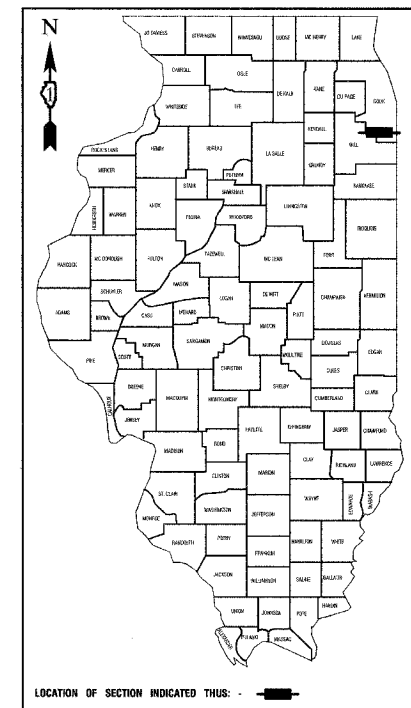
STATE OF ILLINOIS
DEPARTMENT OF TRANSPORTATION
DIVISION OF HIGHWAYS
**PLANS FOR PROPOSED
FEDERAL AID HIGHWAY**
HICKORY STREET (F.A.U. ROUTE 3600)
HARLEM AVENUE TO RIDGELAND AVENUE
LOCAL AGENCY PAVEMENT PRESERVATION
STREET RESURFACING
PROJECT: M8003(577)
SECTION NO.: 06-00103-00-FP
JOB NO.: C-91-151-06
VILLAGE OF TINLEY PARK
COOK COUNTY

INDEX OF SHEETS

1. COVER SHEET, INDEX OF SHEETS, LOCATION MAP INDEX OF STATE STANDARDS
2. SUMMARY OF QUANTITIES & GENERAL NOTES
3. TYPICAL CROSS SECTION AND CONSTRUCTION DETAIL
- 4.-5. PLAN VIEW
- 6.-9. DETAILS

STATE STANDARDS

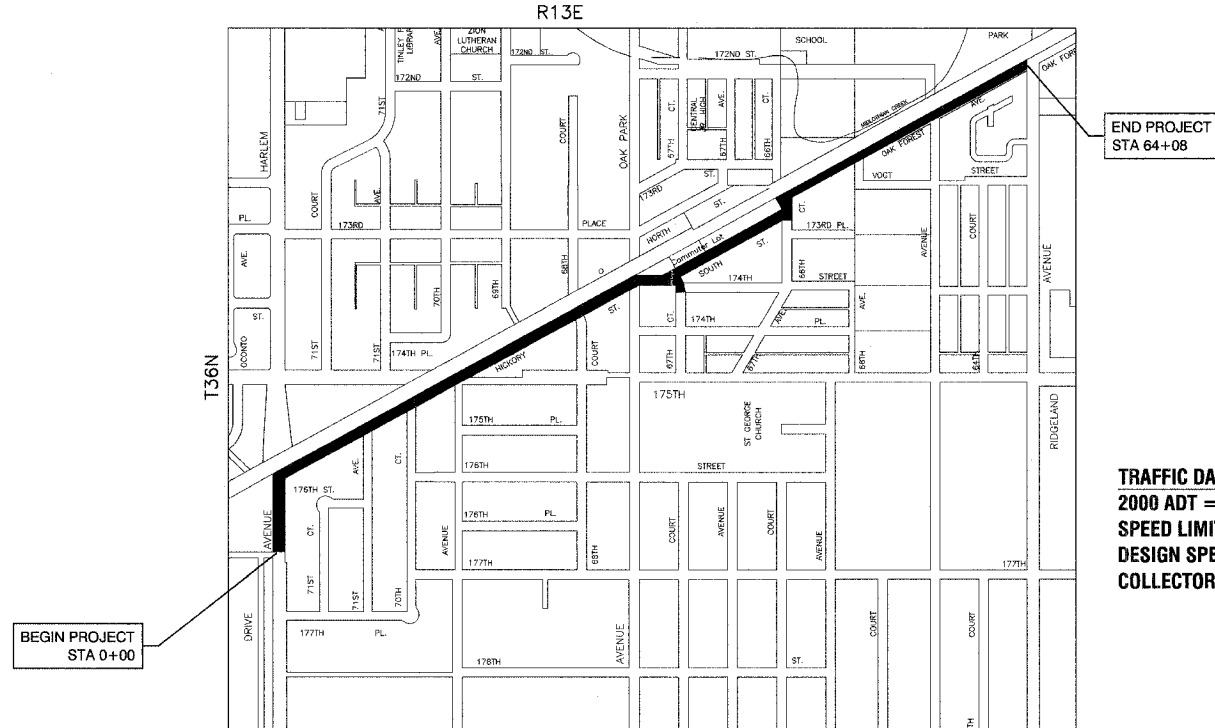
- 000001-04 Standard Symbols, Abbreviations and Patterns
- 602011 Catch Basin, Type C
- 442201-02 Class C and D Patches
- 606001-03 Concrete Curb and Combination Concrete Curb & Gutter
- 701311-02 Lane Closure, 2-L, 2-W, Moving Operations, Day Only
- 701501-03 Lane Closure, 2-L, 2-W, Day or Night Operations, for Speeds < 45 MPH
- 701606-04 Lane Closure, Multilane, 2-W, with Mount Median, for Speeds < 45 MPH
- 701701-04 Lane Closure, Multilane, Intersection, for Speeds < 45 MPH
- 701801-03 Lane Closure, Multilane 1W or 2W Crosswalk or Sidewalk Closure
- 702001-06 Traffic Control Devices



FULL SIZE PLANS HAVE BEEN PREPARED USING STANDARD ENGINEERING SCALES, REDUCED SIZED PLANS WILL NOT CONFORM TO STANDARD SCALES, IN MAKING MEASUREMENTS ON REDUCED PLANS, THE ABOVE SCALES MAY BE USED.

J. U. L. I. E.
JOINT UTILITY LOCATION INFORMATION FOR EXCAVATION
1 - 800 - 892 - 0123

CONTRACT NO. 83942



LOCATION MAP

— INDICATES PROPOSED IMPROVEMENT
SCALE: 1"=600'
GROSS LENGTH= 6,408 FEET = 1.214 MILES
NET LENGTH= 5,453 FEET = 1.03 MILES

TRAFFIC DATA
2000 ADT = 4500
SPEED LIMIT = 30 MPH
DESIGN SPEED = 30 MPH
COLLECTOR

STATE OF ILLINOIS
DEPARTMENT OF TRANSPORTATION
DIVISION OF HIGHWAYS

APPROVED: *[Signature]* 5/27/07
PRESIDENT, VILLAGE OF TINLEY PARK

PASSED: *[Signature]* 2007
REGION ONE ENGINEER OF LOCAL ROADS & STREETS

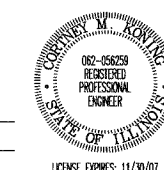
RELEASED FOR BID BASED ON LIMITED REVIEW: June 4, 2007
[Signature]
DEPUTY DIRECTOR OF HIGHWAYS, REGION ONE ENGINEER

CONSULTANTS: ROBINSON ENGINEERING, LTD. 708-331-6700
CONTACT ENGINEER: CORTNEY KONING

**PRINTED BY THE AUTHORITY OF
THE STATE OF ILLINOIS**

PREPARED BY OR UNDER THE DIRECT SUPERVISION OF:

[Signature]
5/24/07



I.D.O.T. FEDERAL AID DESIGN ENGINEER: KEVIN STALLWORTH 847-705-4169