

F. A. U. RTE.	SECTION	COUNTY	TOTAL SHEETS	SHEET NO.
3600	06-00103-00-FP	COOK	9	1
STA.		TO STA.		
FED. ROAD DIST. NO.	MILEAGE	FED. AID PROJECT		

CONTRACT #83942

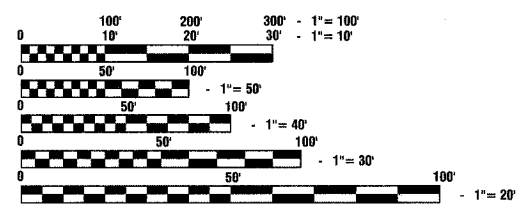
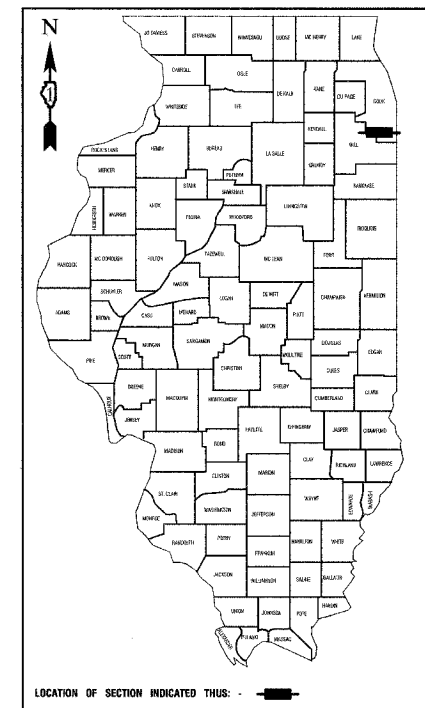
STATE OF ILLINOIS  
DEPARTMENT OF TRANSPORTATION  
DIVISION OF HIGHWAYS  
**PLANS FOR PROPOSED  
FEDERAL AID HIGHWAY**  
HICKORY STREET (F.A.U. ROUTE 3600)  
HARLEM AVENUE TO RIDGELAND AVENUE  
LOCAL AGENCY PAVEMENT PRESERVATION  
STREET RESURFACING  
PROJECT: M8003(577)  
SECTION NO.: 06-00103-00-FP  
JOB NO.: C-91-151-06  
VILLAGE OF TINLEY PARK  
COOK COUNTY

**INDEX OF SHEETS**

1. COVER SHEET, INDEX OF SHEETS, LOCATION MAP INDEX OF STATE STANDARDS
2. SUMMARY OF QUANTITIES & GENERAL NOTES
3. TYPICAL CROSS SECTION AND CONSTRUCTION DETAIL
- 4.-5. PLAN VIEW
- 6.-9. DETAILS

**STATE STANDARDS**

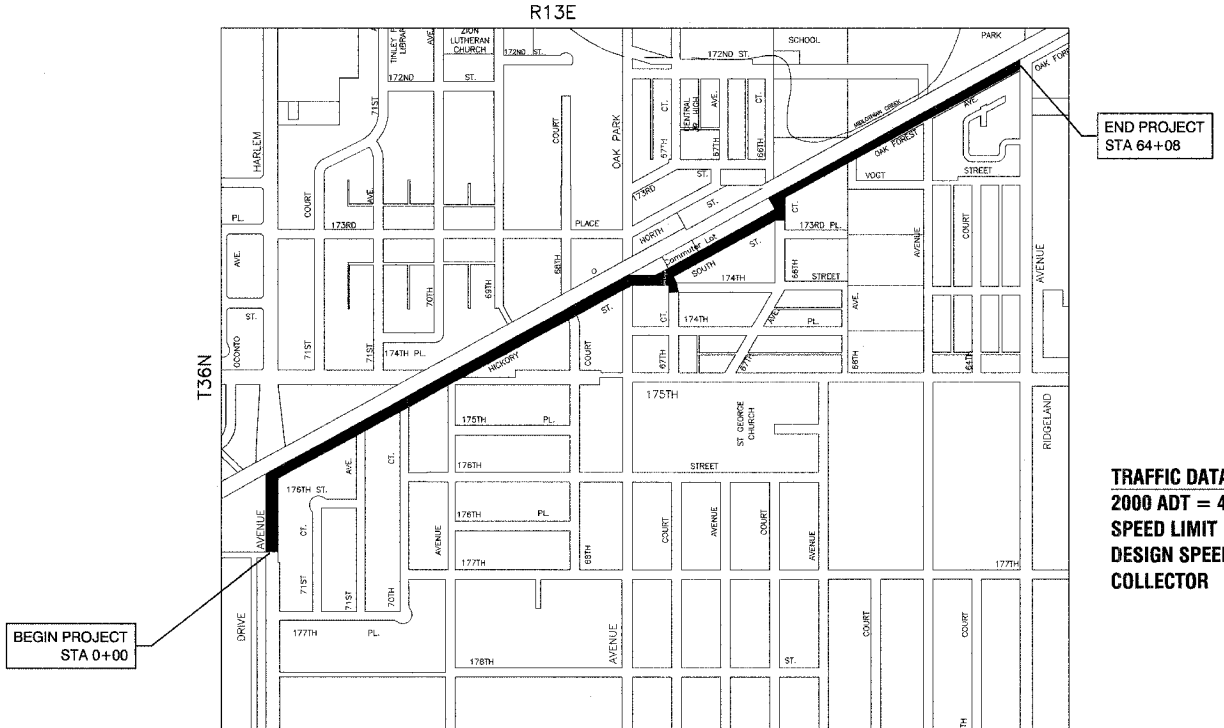
- 000001-04 Standard Symbols, Abbreviations and Patterns
- 602011 Catch Basin, Type C
- 442201-02 Class C and D Patches
- 606001-03 Concrete Curb and Combination Concrete Curb & Gutter
- 701311-02 Lane Closure, 2-L, 2-W, Moving Operations, Day Only
- 701501-03 Lane Closure, 2-L, 2-W, Day or Night Operations, for Speeds < 45 MPH
- 701606-04 Lane Closure, Multilane, 2-W, with Mount Median, for Speeds < 45 MPH
- 701701-04 Lane Closure, Multilane, Intersection, for Speeds < 45 MPH
- 701801-03 Lane Closure, Multilane 1W or 2W Crosswalk or Sidewalk Closure
- 702001-06 Traffic Control Devices



FULL SIZE PLANS HAVE BEEN PREPARED USING STANDARD ENGINEERING SCALES, REDUCED SIZED PLANS WILL NOT CONFORM TO STANDARD SCALES, IN MAKING MEASUREMENTS ON REDUCED PLANS, THE ABOVE SCALES MAY BE USED.

J. U. L. I. E.  
JOINT UTILITY LOCATION INFORMATION FOR EXCAVATION  
1 - 800 - 892 - 0123

**CONTRACT NO. 83942**



**LOCATION MAP**

— INDICATES PROPOSED IMPROVEMENT  
SCALE: 1"=600'  
GROSS LENGTH= 6,408 FEET = 1.214 MILES  
NET LENGTH= 5,453 FEET = 1.03 MILES

**TRAFFIC DATA**  
2000 ADT = 4500  
SPEED LIMIT = 30 MPH  
DESIGN SPEED = 30 MPH  
COLLECTOR

STATE OF ILLINOIS  
DEPARTMENT OF TRANSPORTATION  
DIVISION OF HIGHWAYS

APPROVED: *[Signature]* 5/27/07  
PRESIDENT, VILLAGE OF TINLEY PARK

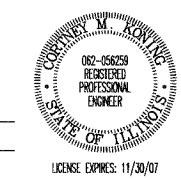
PASSED: *[Signature]* 2007  
REGION ONE ENGINEER OF LOCAL ROADS & STREETS

RELEASED FOR BID BASED ON LIMITED REVIEW: June 4, 2007  
*[Signature]*  
DEPUTY DIRECTOR OF HIGHWAYS, REGION ONE ENGINEER

CONSULTANTS: ROBINSON ENGINEERING, LTD. 708-331-6700  
CONTACT ENGINEER: CORTNEY KONING

**PRINTED BY THE AUTHORITY OF  
THE STATE OF ILLINOIS**

PREPARED BY OR UNDER THE DIRECT SUPERVISION OF:  
*[Signature]*  
5/24/07



I.D.O.T. FEDERAL AID DESIGN ENGINEER: KEVIN STALLWORTH 847-705-4169

P. A. U. FILE	SECTION	COUNTY	TOTAL SHEETS	SHEET NO.
3600	06-00103-00-PP	COOK	9	2
STA.	TO STA.			
FED. ROAD DIST. NO.	ILLINOIS	FED. AID PROJECT		

CONTRACT #83942

SUMMARY OF QUANTITIES				ROADWAY
S.I.	CODE NO.	PAY ITEM	UNIT	CONSTRUCTION TYPE CODE
				1000
	21101615	TOPSOIL FURNISH AND PLACE, 4"	SQ YD	220
	25000210	SEEDING, CLASS 2A	ACRE	0.05
	25000400	NITROGEN FERTILIZER NUTRIENT	POUND	5
	25000500	PHOSPHORUS FERTILIZER NUTRIENT	POUND	5
	25000600	POTASSIUM FERTILIZER NUTRIENT	POUND	5
	25100630	EROSION CONTROL BLANKET	SQ YD	230
	40300100	BITUMINOUS MATERIALS (PRIME COAT)	GALLON	155
	40600300	AGGREGATE (PRIME COAT)	TON	75
	40600825	POLYMERIZED LEVELING BINDER (MACHINE METHOD), N50 IL 4.75	TON	650
	40600895	CONSTRUCTING TEST STRIP	EACH	1
	40600982	HOT-MIX ASPHALT SURFACE REMOVAL - BUTT JOINT	SQ YD	653
	40603310	HOT-MIX ASPHALT SURFACE COURSE, MIX "C", N50	TON	2071
	42400200	PORTLAND CEMENT CONCRETE SIDEWALK 5 INCH	SQ FT	906
	44000100	PAVEMENT REMOVAL	SQ YD	220
	44000198	HOT-MIX ASPHALT SURFACE REMOVAL (VARIABLE DEPTH)	SQ YD	3950
	44000500	COMBINATION CURB AND GUTTER REMOVAL	FOOT	700
	44000600	SIDEWALK REMOVAL	SQ FT	906
	44201753	CLASS D PATCHES, TYPE II, 9 INCH	SQ YD	400
	44201757	CLASS D PATCHES, TYPE III, 9 INCH	SQ YD	500
	44201759	CLASS D PATCHES, TYPE IV, 9 INCH	SQ YD	800
	48101200	AGGREGATE SHOULDERS, TYPE B	TON	120
	550A0340	STORM SEWERS, CLASS A, TYPE 2 12"	FOOT	56
	60206905	CATCH BASINS, TYPE C, TYPE 1 FRAME, OPEN LID	EACH	1
	60250400	CATCH BASINS TO BE ADJUSTED WITH NEW TYPE 1 FRAME, OPEN LID	EACH	2
	60255800	MANHOLES TO BE ADJUSTED WITH NEW TYPE 1 FRAME, CLOSED LID	EACH	2
	60300305	FRAMES AND LIDS TO BE ADJUSTED	EACH	15
	60300310	FRAMES AND LIDS TO BE ADJUSTED (SPECIAL)	EACH	19
	60603800	COMBINATION CONCRETE CURB AND GUTTER, TYPE B-6.12	FOOT	217
	60604400	COMBINATION CONCRETE CURB AND GUTTER, TYPE B-6.18	FOOT	365
	67100100	MOBILIZATION	L SUM	1
	70102620	TRAFFIC CONTROL AND PROTECTION, STANDARD 701501	L SUM	1
	70102625	TRAFFIC CONTROL AND PROTECTION, STANDARD 701606	L SUM	1
	70102635	TRAFFIC CONTROL AND PROTECTION, STANDARD 701701	L SUM	1
	70102640	TRAFFIC CONTROL AND PROTECTION, STANDARD 701801	L SUM	1
	70300100	SHORT TERM PAVEMENT MARKINGS	FOOT	11198
	70300200	TEMPORARY PAVEMENT MARKING	FOOT	7000
*	78000100	THERMOPLASTIC PAVEMENT MARKING - LETTERS AND SYMBOLS	SQ FT	212
*	78000200	THERMOPLASTIC PAVEMENT MARKING - LINE 4"	FOOT	34000
*	78000400	THERMOPLASTIC PAVEMENT MARKING - LINE 6"	FOOT	480
*	78000650	THERMOPLASTIC PAVEMENT MARKING - LINE 24"	FOOT	347
	X0322052	ASPHALT REJUVENATING AGENT	GALLON	2455
	X0322256	TEMPORARY INFORMATION SIGNING	SQ FT	108
	X0324096	HOT IN-PLACE RECYCLING	SQ YD	24553

\* - INDICATES SPECIALTY ITEMS

Class D Patches				
From Station	To Station	Type II	Type III	Type IV
1+30	1+41	11 sq yd		
1+93	1+97	11 sq yd		
2+80	3+14			93 sq yd
4+80	5+25			50 sq yd
5+53	5+79	12 sq yd		
8+60	8+70	5 sq yd		
10+17	10+63		21 sq yd	
10+67	11+25			88 sq yd
11+13	12+50			70 sq yd
11+85	11+95	8 sq yd		
12+10	12+75			29 sq yd
12+50	13+10			27 sq yd
13+00	13+25	12 sq yd		
14+50	15+70			54 sq yd
14+82	15+36			48 sq yd
15+36	16+09			41 sq yd
17+50	17+90		18 sq yd	
19+45	19+70		14 sq yd	
20+20	20+30	5 sq yd		
20+68	21+00		15 sq yd	
20+75	21+25		23 sq yd	
21+70	22+10		18 sq yd	
22+25	22+79		24 sq yd	
23+30	23+55		23 sq yd	
26+37	26+57	9 sq yd		
28+74	29+05	14 sq yd		
30+15	30+50		16 sq yd	
30+91	31+00	12 sq yd		
32+00	65+44	264 sq yd	282 sq yd	227 sq yd

**GENERAL NOTES**

ROBINSON ENGINEERING FIELD OFFICE SHALL BE NOTIFIED TWO (2) WORKING DAYS PRIOR TO CONSTRUCTION. CALL (708) 331-6700

THE CONTRACTOR SHALL PROVIDE AND INSTALL TWO (2) WEIGHTED SANDBAGS ON EACH TYPE I AND TYPE 2 BARRICADE USED. ONE (1) WEIGHTED SANDBAG SHALL BE INSTALLED ON EACH BOTTOM RAIL.

THE REMOVAL OF ANY DRIVEWAYS, PAVEMENT, CURB, ETC. SHALL BE ACCOMPLISHED BY MEANS OF A SAW CUT JOINT, AT THE DIRECTION OF THE ENGINEER. THIS WORK SHALL NOT BE PAID FOR SEPARATELY, BUT SHALL BE INCLUDED IN THE UNIT PRICE BID FOR THE VARIOUS REMOVAL ITEMS.

WHEN, IN THE CONSTRUCTION OPERATION, ANY LOOSE MATERIAL IS DEPOSITED IN THE FLOW LINE OF DITCHES, GUTTERS OR OTHER DRAINAGE STRUCTURES SO THAT THE NATURAL FLOW OF WATER IS OBSTRUCTED, IT SHALL BE REMOVED AT THE CLOSE OF EACH DAY BY THE CONTRACTOR AT HIS EXPENSE. AT THE CONCLUSION OF THE CONSTRUCTION OPERATIONS, ALL DRAINAGE STRUCTURES SHALL BE FREE FROM ALL DIRT AND DEBRIS. THIS WORK SHALL NOT BE PAID FOR SEPARATELY BUT SHALL BE CONSIDERED INCIDENTAL TO THE CONTRACT.

BEFORE STARTING ANY EXCAVATION, THE CONTRACTOR SHALL CALL J.U.L.I.E. AT (800) 892-0123 FOR FIELD LOCATIONS OF BURIED ELECTRIC, COMMUNICATIONS, AND GAS UTILITIES. (48 HOUR NOTIFICATION REQUIRED.)

IT SHALL BE THE CONTRACTORS RESPONSIBILITY TO VERIFY ALL DIMENSIONS AND CONDITIONS EXISTING IN THE FIELD PRIOR TO CONSTRUCTION AND ORDERING OF MATERIALS.

AREAS DISTURBED BY CONSTRUCTION SHALL BE KEPT TO A MINIMUM. ALL AREAS DISTURBED UNNECESSARILY SHALL BE RESTORED AT THE CONTRACTORS EXPENSE.

UTILITIES INDICATED ON THE PLANS ARE PROVIDED OR THE CONTRACTORS USE AND ARE BASED UPON INFORMATION AVAILABLE AT THE TIME OF THE ADVERTISEMENT FOR BIDS. THE OWNER AND ENGINEER DO NOT GUARANTEE THE ACCURACY OF THE UTILITY INFORMATION.

ITEMS OF WORK LISTED IN THE SUMMARY OF QUANTITIES NOT SPECIFICALLY CALLED OUT ON THE PLANS SHALL BE PERFORMED AS DIRECTED BY THE ENGINEER.

ANY REFERENCE TO THE STANDARDS THROUGHOUT THE PLANS OR SPECIAL PROVISIONS SHALL BE INTERPRETED TO BE THE LATEST STANDARDS OF THE ILLINOIS DEPARTMENT OF TRANSPORTATION.

THE THICKNESS OF BITUMINOUS MIXTURE STATED IN THE SPECIFICATIONS IS THE NOMINAL THICKNESS. DEVIATIONS FROM THE NOMINAL THICKNESS WILL BE PERMITTED WHEN SUCH DEVIATIONS OCCUR DUE TO IRREGULARITIES IN THE EXISTING SURFACE OR BASE ON WHICH THE BITUMINOUS SURFACE IS PLACED.

BITUMINOUS QUANTITIES WERE CALCULATED USING 112.0 LBS PER INCH/SQ YD.

ALL PAVEMENT MARKINGS SHALL BE THERMOPLASTIC.

SCHEDULES INCLUDED IN THE PLANS HAVE BEEN PREPARED FROM FIELD NOTES. EXACT LOCATIONS FOR PATCHING SHALL BE DETERMINED IN THE FIELD BY THE ENGINEER.

REVISIONS	
NAME	DATE

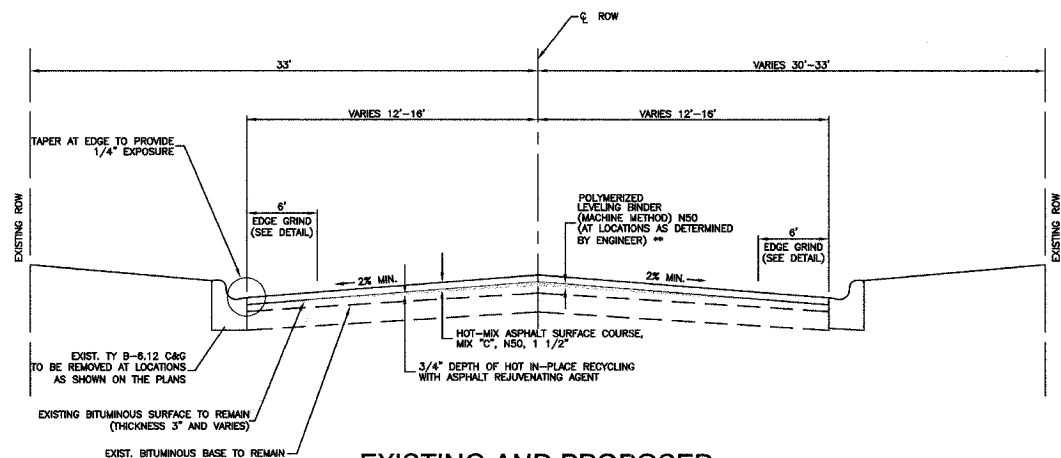
ILLINOIS DEPARTMENT OF TRANSPORTATION  
**HICKORY STREET  
LAPP PROJECT**  
SUMMARY OF QUANTITIES AND GENERAL NOTES

SCALE: VERT. NA  
HORIZ. NA  
DATE 4/13/07

DRAWN BY LTL  
CHECKED BY CMK

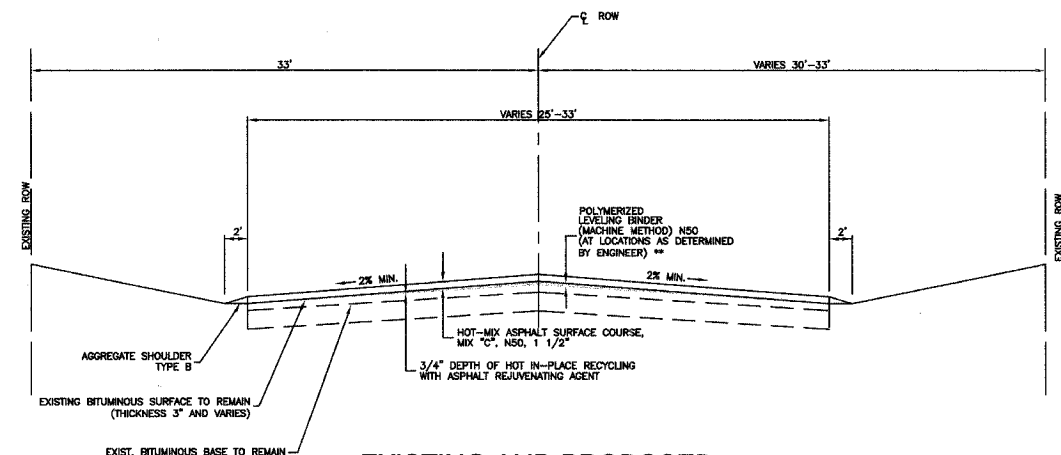
F. A. U. NO.	SECTION	COUNTY	TOTAL SHEETS	SHEET NO.
3600	06-00103-00-FP	COOK	9	3
STA.		TO STA.		
FED. ROAD DIST. NO.	ALTERN.	FED. AID PROJECT		

CONTRACT #83942



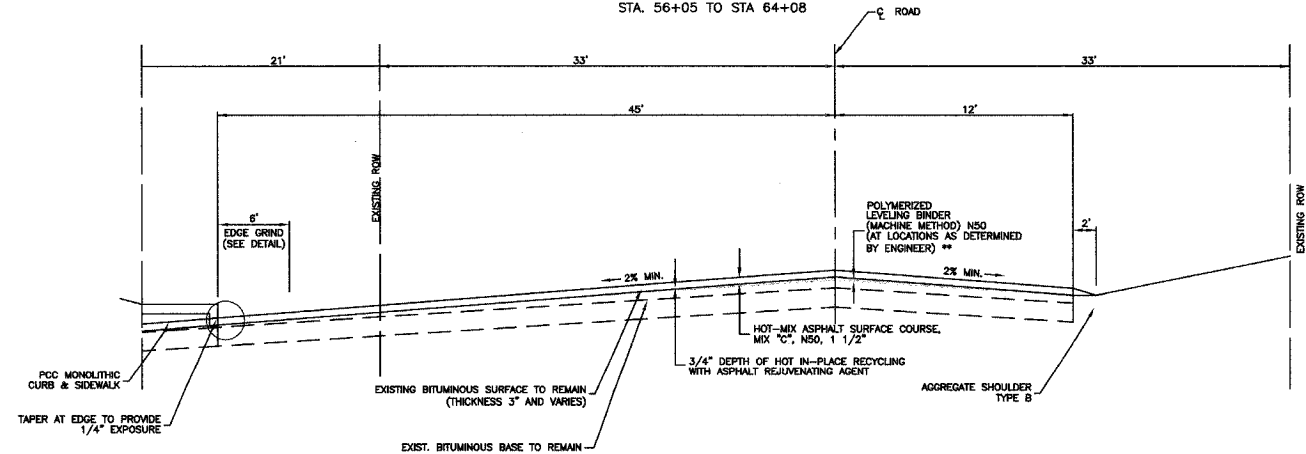
**EXISTING AND PROPOSED  
TYPICAL CROSS SECTION**

HICKORY STREET  
STA. 0+00 TO STA. 7+10  
STA. 33+10 TO STA. 45+00



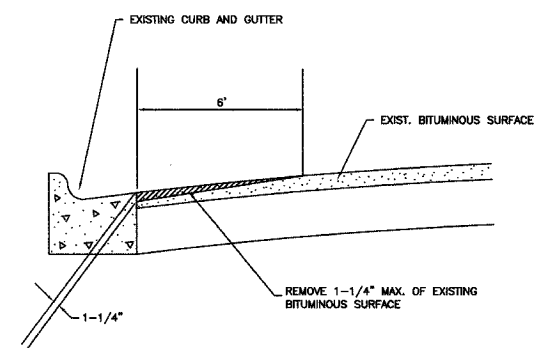
**EXISTING AND PROPOSED  
TYPICAL CROSS SECTION**

HICKORY STREET  
STA. 7+10 TO STA. 21+17  
STA. 45+00 TO STA. 46+50  
STA. 46+50 TO STA. 56+05 OMISSION  
STA. 56+05 TO STA. 64+08



**EXISTING AND PROPOSED  
TYPICAL CROSS SECTION**

HICKORY STREET  
STA. 21+17 TO STA. 33+10



**EDGE GRINDING DETAIL**

\*\*NOTE: LEVELING BINDER SHALL HAVE A MINIMUM LIFT THICKNESS OF 3/4" AND A MAXIMUM LIFT THICKNESS OF 1".

**HOT-MIX ASPHALT MIXTURE REQUIREMENTS**

ITEM	AC TYPE	VOIDS
HOT-MIX ASPHALT SURFACE COURSE, MIX C, N50 (IL-9.5 MM)	PG 64-22	4% @ 50 GYR
POLYMERIZED LEVELING BINDER, (MACHINE METHOD) IL-4.75 N50	SBS/SBR PG 76-28/22	4% @ 50 GYR
CLASS D PATCHES, (HMA BINDER IL-19.0MM)	PG 64-22*	4% @ 50 GYR

THE UNIT WEIGHT USED TO CALCULATE ALL HOT-MIX ASPHALT SURFACE MIXTURE QUANTITIES IS 112 LBS/SQ YD/IN  
\* WHEN RAP EXCEEDS 20%, THE NEW ASPHALT BINDER IN THE MIX SHALL BE PG 58-22

REVISIONS	
NAME	DATE

ILLINOIS DEPARTMENT OF TRANSPORTATION

**HICKORY STREET  
LAPP PROJECT  
TYPICAL CROSS SECTIONS**

SCALE: VERT. NA  
HORIZ. NA  
DATE: 4/13/07

DRAWN BY: LTL  
CHECKED BY: CMK

F. A. U. NO.	SECTION	COUNTY	TOTAL SHEETS	SHEET NO.
3800	06-00103-00-FP	COOK	9	4
STA. 0+00	TO STA. 32+00			
FED. ROAD DIST. NO.	BLANKET	FED. AID PROJECT		

CONTRACT #83942

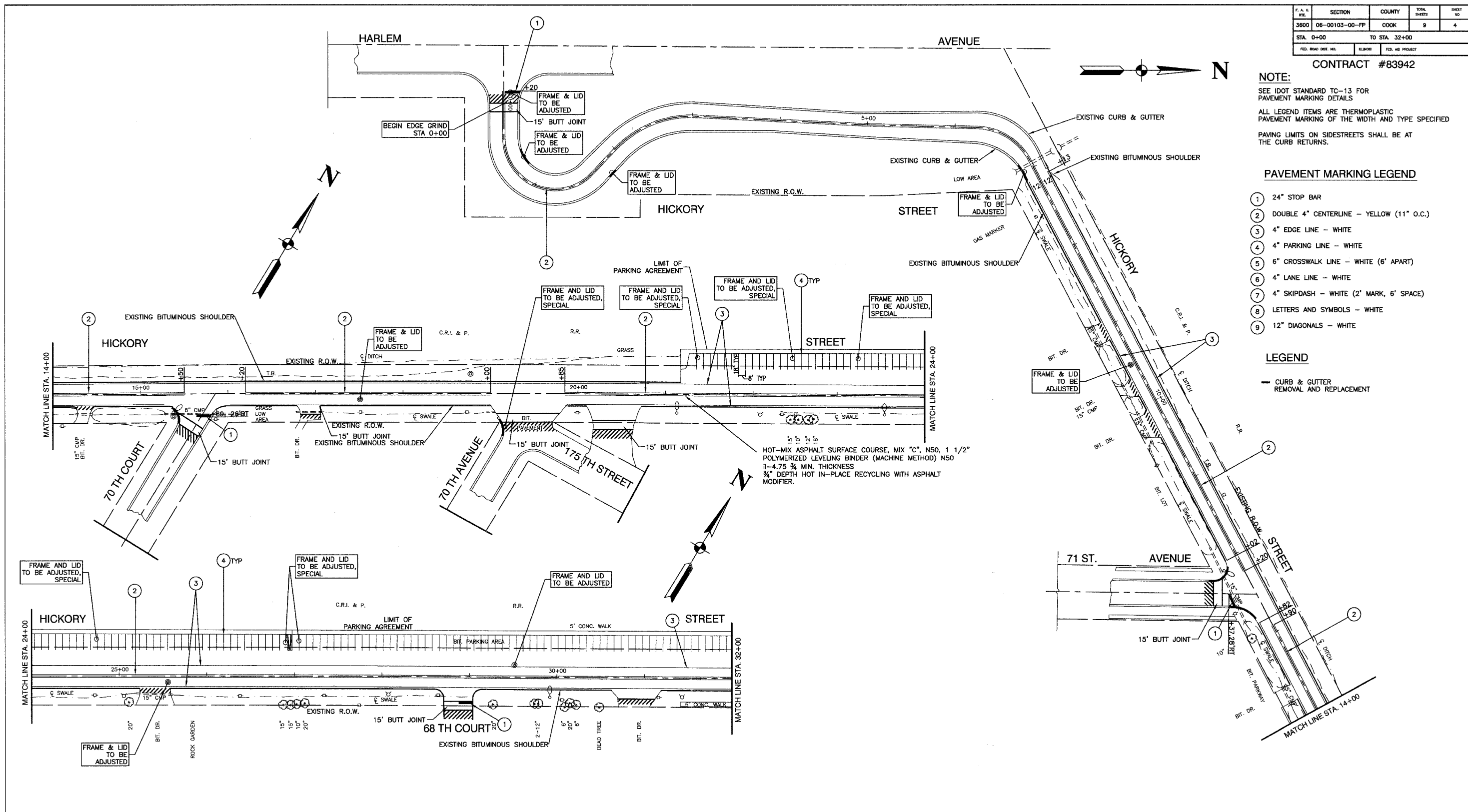
**NOTE:**  
 SEE IDOT STANDARD TC-13 FOR PAVEMENT MARKING DETAILS  
 ALL LEGEND ITEMS ARE THERMOPLASTIC PAVEMENT MARKING OF THE WIDTH AND TYPE SPECIFIED  
 PAVING LIMITS ON SIDESTREETS SHALL BE AT THE CURB RETURNS.

**PAVEMENT MARKING LEGEND**

- ① 24" STOP BAR
- ② DOUBLE 4" CENTERLINE - YELLOW (11" O.C.)
- ③ 4" EDGE LINE - WHITE
- ④ 4" PARKING LINE - WHITE
- ⑤ 6" CROSSWALK LINE - WHITE (6' APART)
- ⑥ 4" LANE LINE - WHITE
- ⑦ 4" SKIPDASH - WHITE (2' MARK, 6' SPACE)
- ⑧ LETTERS AND SYMBOLS - WHITE
- ⑨ 12" DIAGONALS - WHITE

**LEGEND**

— CURB & GUTTER REMOVAL AND REPLACEMENT

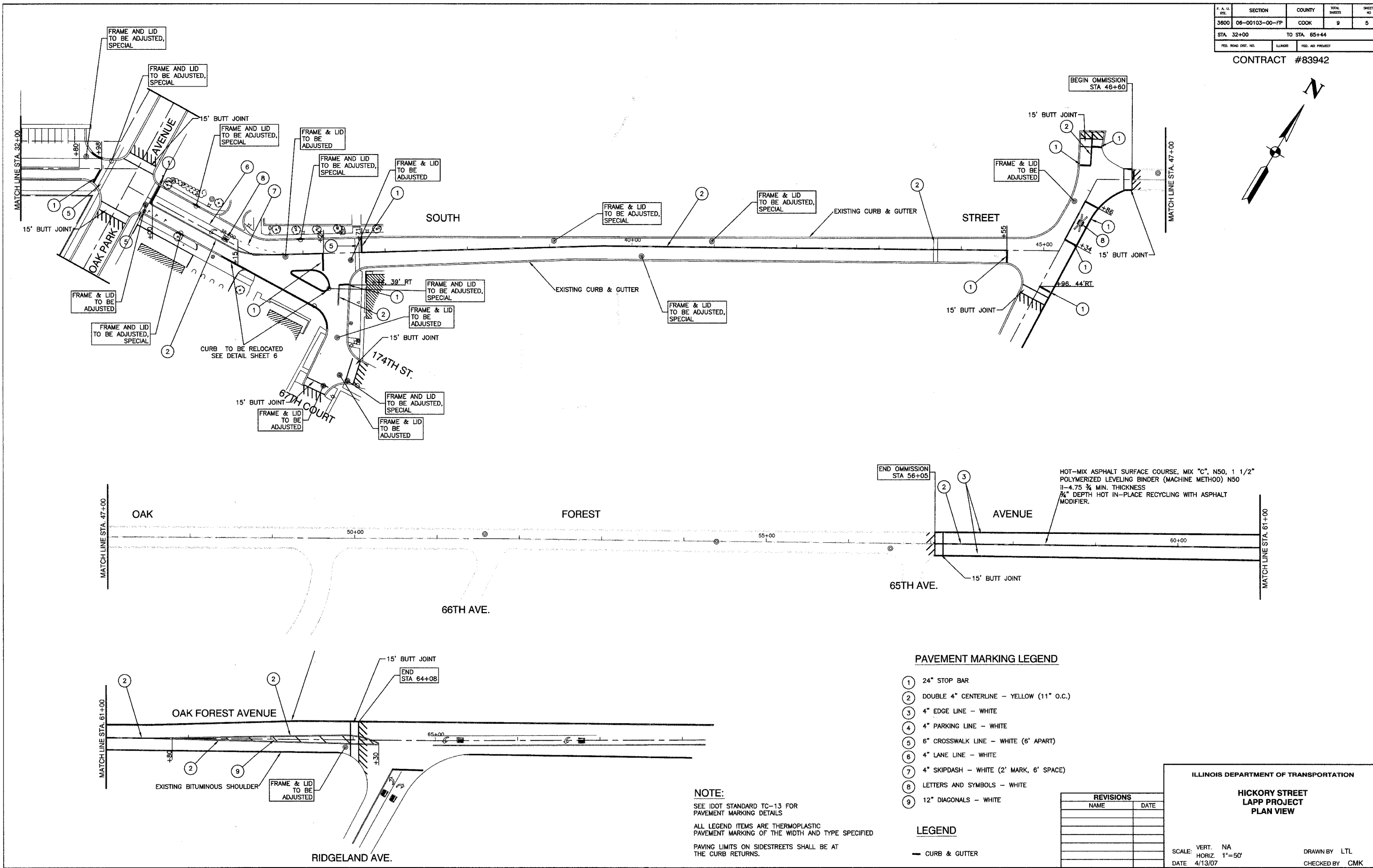
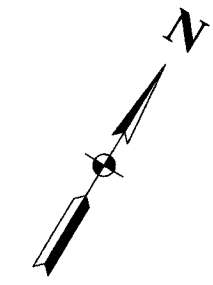


REVISIONS	
NAME	DATE

ILLINOIS DEPARTMENT OF TRANSPORTATION  
**HICKORY STREET LAPP PROJECT PLAN VIEW**  
 SCALE: VERT. NA  
 HORIZ. 1"=50'  
 DATE 4/13/07  
 DRAWN BY LTL  
 CHECKED BY CMK

F. A. II. DIST.	SECTION	COUNTY	TOTAL SHEETS	SHEET NO.
3600	06-00103-00-FP	COOK	9	5
STA. 32+00		TO STA. 65+44		
FED. ROAD DIST. NO.	ILLINOIS	FED. AID PROJECT		

CONTRACT #83942



END OMISSION STA 56+05

HOT-MIX ASPHALT SURFACE COURSE, MIX "C", N50, 1 1/2" POLYMERIZED LEVELING BINDER (MACHINE METHOD) N50 1 1/4-4.75 3/4 MIN. THICKNESS 3/4" DEPTH HOT IN-PLACE RECYCLING WITH ASPHALT MODIFIER.

65TH AVE.

15' BUTT JOINT

**PAVEMENT MARKING LEGEND**

- ① 24" STOP BAR
- ② DOUBLE 4" CENTERLINE - YELLOW (11" O.C.)
- ③ 4" EDGE LINE - WHITE
- ④ 4" PARKING LINE - WHITE
- ⑤ 6" CROSSWALK LINE - WHITE (6' APART)
- ⑥ 4" LANE LINE - WHITE
- ⑦ 4" SKIPDASH - WHITE (2' MARK, 6' SPACE)
- ⑧ LETTERS AND SYMBOLS - WHITE
- ⑨ 12" DIAGONALS - WHITE

**LEGEND**

— CURB & GUTTER

**NOTE:**  
 SEE IDOT STANDARD TC-13 FOR PAVEMENT MARKING DETAILS  
 ALL LEGEND ITEMS ARE THERMOPLASTIC PAVEMENT MARKING OF THE WIDTH AND TYPE SPECIFIED  
 PAVING LIMITS ON SIDESTREETS SHALL BE AT THE CURB RETURNS.

REVISIONS	
NAME	DATE

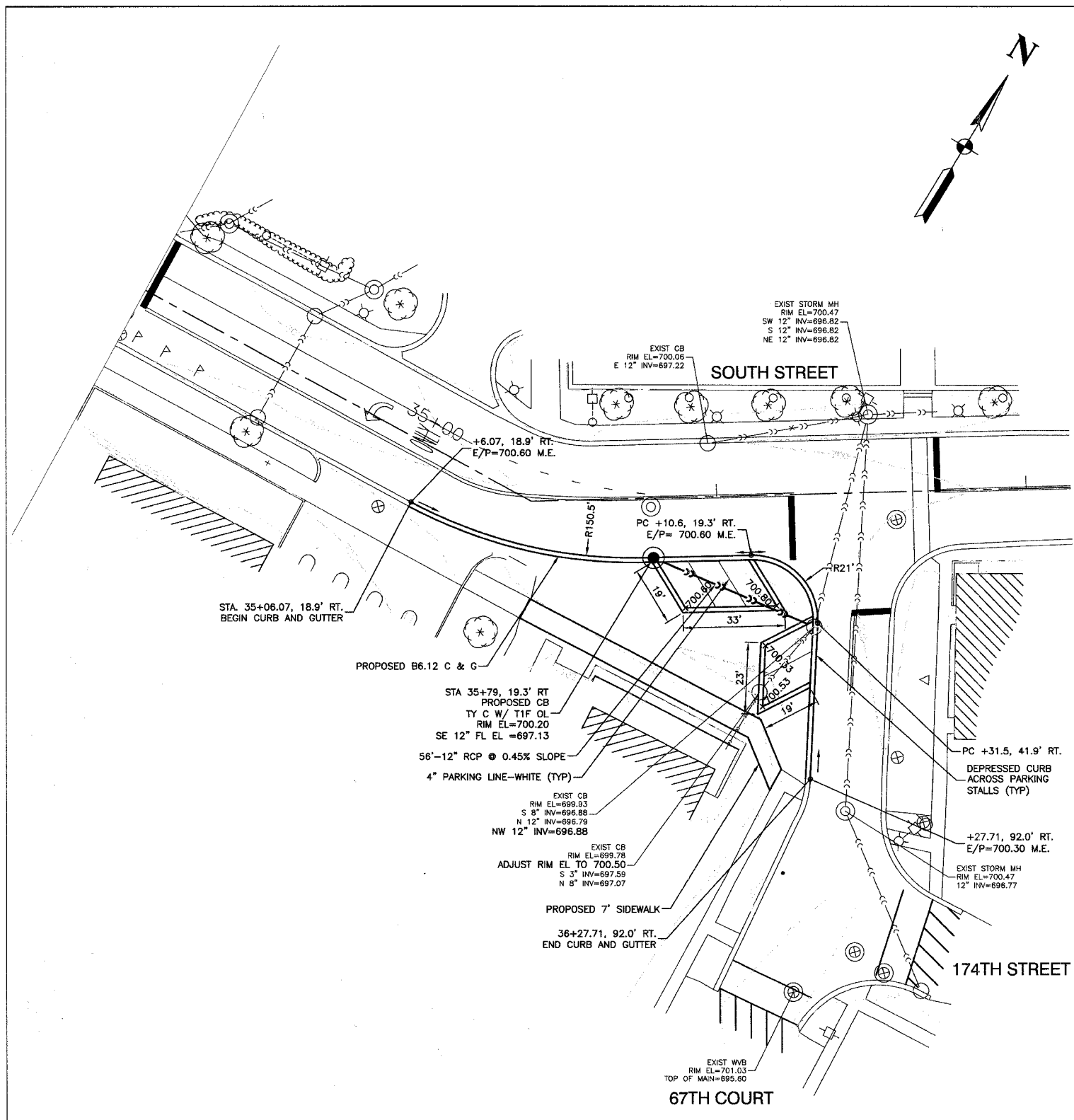
ILLINOIS DEPARTMENT OF TRANSPORTATION  
**HICKORY STREET LAPP PROJECT PLAN VIEW**

SCALE: VERT. NA  
 HORIZ. 1"=50'  
 DATE 4/13/07

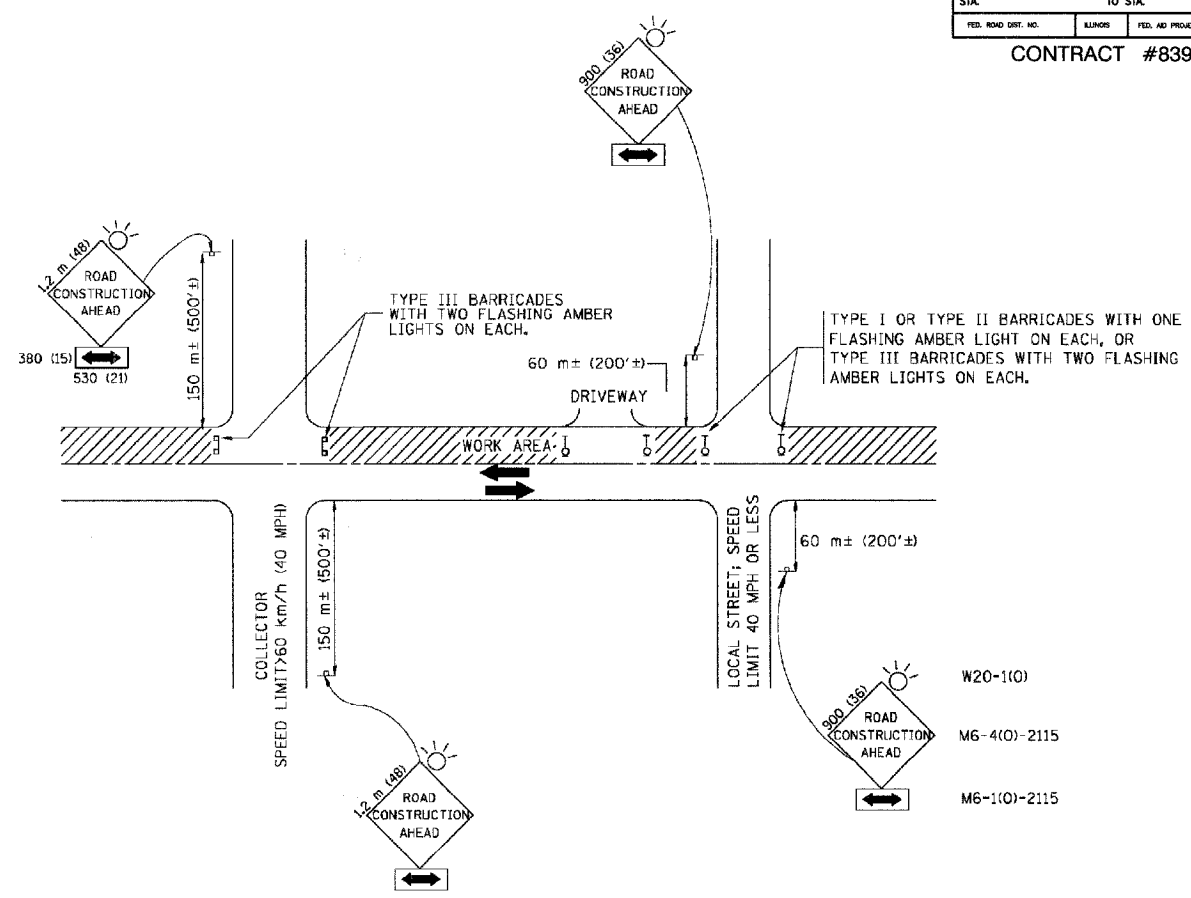
DRAWN BY LTL  
 CHECKED BY CMK

F. A. U. NO.	SECTION	COUNTY	TOTAL SHEETS	SHEET NO.
3600	06-00103-00-FP	COOK	9	6
STA.		TO STA.		
FED. ROAD DIST. NO.	BLANKS	FED. AID PROJECT		

CONTRACT #83942



INTERSECTION DETAIL  
SOUTH STREET & 67TH COURT  
SCALE 1" = 20'



TRAFFIC CONTROL AND PROTECTION FOR SIDE ROADS, INTERSECTIONS, AND DRIVEWAYS

NOTES:

- A. FOR NO LANE RESTRICTION ON THE SIDE ROAD OR DRIVEWAYS
- B. FOR A LANE CLOSURE ON A SIDE ROAD OR DRIVEWAY:  
USE APPLICABLE PORTIONS OF THE TYPICAL APPLICATION OF TRAFFIC CONTROL DEVICES (STD. 701501, STD. 701606 OR THE APPROPRIATE STANDARD). THE SPACING OF SIGNS AND BARRICADES SHALL BE ADJUSTED FOR FIELD CONDITIONS AS DIRECTED BY THE ENGINEER. THE DIRECTIONAL ARROW SHALL BE COVERED OR REMOVED WHEN NO LONGER CONSISTENT WITH THE SIDE ROAD LANE CLOSURE.
- C. ADVANCE WARNING SIGNS ARE TO BE OMITTED ON DRIVEWAY UNLESS OTHERWISE NOTED.
- D. THE TRAFFIC CONTROL AND PROTECTION FOR SIDE ROADS, INTERSECTIONS, AND DRIVEWAYS SHALL BE INCIDENTAL TO THE COST OF SPECIFIED TRAFFIC CONTROL STANDARDS OR ITEMS.
- SIDE ROAD WITH A SPEED LIMIT OF 60 km/h (40 MPH) OR LESS AS SHOWN ON THE DRAWING AND AS DIRECTED BY THE ENGINEER:
    - ONE **ROAD CONSTRUCTION AHEAD** SIGN 900x900 (36x36) WITH A FLASHER AND FLAG MOUNTED ON IT APPROXIMATELY 60 m (200') IN ADVANCE OF THE MAIN ROUTE.
    - THE CLOSED PORTION OF THE MAIN ROUTE SHALL BE PROTECTED BY BLOCKING WITH TYPE I, TYPE II OR TYPE III BARRICADES, 1/3 OF THE CROSS SECTION OF THE CLOSED PORTION.
  - SIDE ROAD WITH A SPEED LIMIT GREATER THAN 60 km/h (40 MPH) AS SHOWN ON THE DRAWING AND AS DIRECTED BY THE ENGINEER:
    - ONE **ROAD CONSTRUCTION AHEAD** SIGN 1.2 m x 1.2 m (48x48) WITH A FLASHER MOUNTED ON IT APPROXIMATELY 150 m (500') IN ADVANCE OF THE MAIN ROUTE.
    - THE CLOSED PORTION OF THE MAIN ROUTE SHALL BE PROTECTED BY BLOCKING WITH TYPE III BARRICADES, 1/2 OF THE CROSS SECTION OF THE CLOSED PORTION.
  - WHEN THE SIDE ROAD LIES BETWEEN THE BEGINNING OF THE MAINLINE SIGNING AND THE WORK ZONE, A SINGLE HEADED ARROW (M6-1) SHALL BE USED IN LIEU OF THE DOUBLE HEADED ARROW (M6-4).

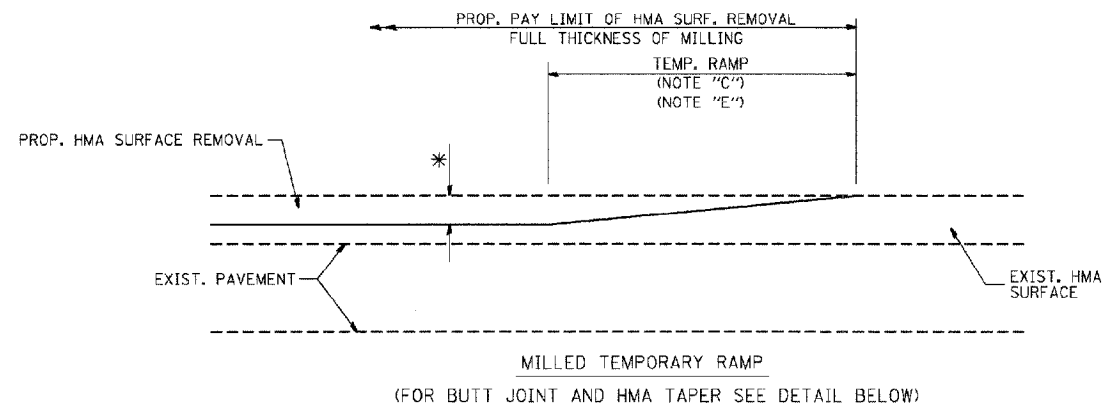
REVISIONS	
NAME	DATE
LHA	6/89
T. RAMMACHER	09/08/94
J. OBERLE	10/18/95
A. HOUSEH	03/06/96
A. HOUSEH	10/15/96
T. RAMMACHER	01/06/00

ILLINOIS DEPARTMENT OF TRANSPORTATION  
TRAFFIC CONTROL AND PROTECTION  
FOR  
SIDE ROADS, INTERSECTIONS, AND  
DRIVEWAYS

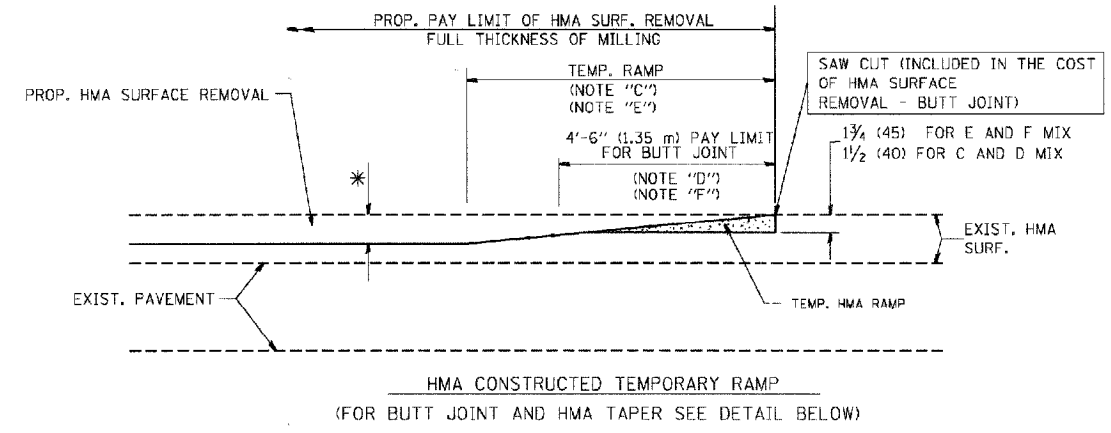
VERT. SCALE: HORIZ. DATE 10/18/2002  
DRAWN BY: CHECKED BY: TC-10

F. A. D. NO.	SECTION	COUNTY	TOTAL SHEETS	SHEET NO.
3600	06-00103-00-FP	COOK	9	7
STA.	TO STA.			
FED. ROAD DIST. NO.	ILMMS	FED. AID PROJECT		

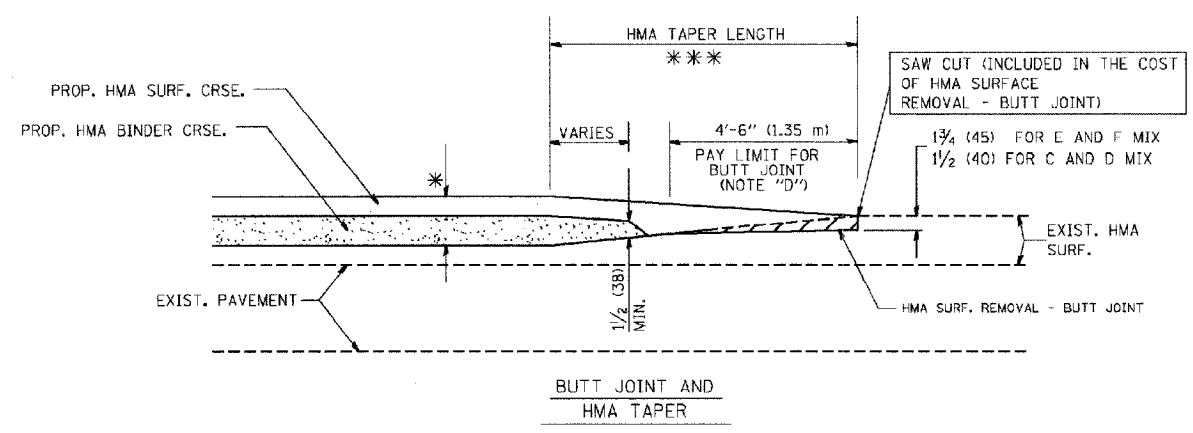
CONTRACT #83942



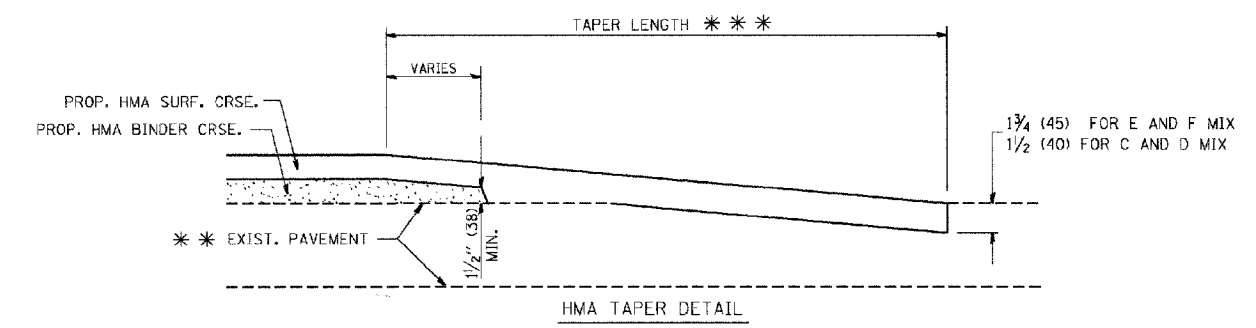
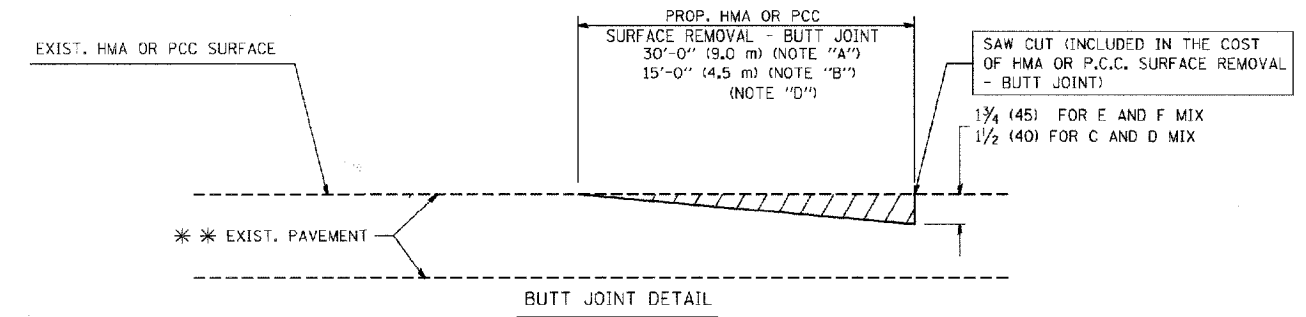
**OPTION 1**



**OPTION 2**  
**TYPICAL TEMPORARY RAMP**



**TYPICAL BUTT JOINT AND HMA TAPER FOR MILLING AND RESURFACING**



**TYPICAL BUTT JOINT AND HMA TAPER FOR RESURFACING ONLY**

\*\*\* PC CONCRETE, HMA OR HMA RESURFACED PAVEMENT.

**NOTES**

- A: MAINLINE ROADWAYS AND MAJOR SIDE ROADS.
  - B: MINOR SIDE ROADS.
  - C: THE TEMP. RAMP SHALL BE CONSTRUCTED IMMEDIATELY UPON REMOVAL OF THE EXISTING HMA SURFACE.
  - D: THE BUTT JOINT SHALL BE CONSTRUCTED IMMEDIATELY PRIOR TO PLACING THE PROPOSED HMA COURSES.
  - E: TAPER THE TEMP. RAMP AT A RATE OF 3'-0" (900 mm) PER 1 INCH (25 mm) OF MILLING THICKNESS.
  - F: INSTALLATION AND REMOVAL OF THE 4'-6" (1.35 m) TEMP. RAMP IS INCLUDED IN COST OF HMA SURFACE REMOVAL - BUTT JOINT
  - G: SEE ARTICLE 406.08 AND 406.14 OF THE STANDARD SPECIFICATIONS FOR "HMA AND/OR PCC SURFACE REMOVAL, BUTT JOINT".
- \* SEE TYPICAL SECTIONS FOR MILLING THICKNESS.
- \*\*\* 20'-0" (6.1 m) PER 1 (25) RESURFACING (NOTE "A")  
10'-0" (3.0 m) PER 1 (25) RESURFACING (NOTE "B")

ALL DIMENSIONS ARE IN INCHES (MILLIMETERS) UNLESS OTHERWISE SHOWN.

**BASIS OF PAYMENT:**

THE BUTT JOINT WILL BE PAID FOR AT THE CONTRACT UNIT PRICE PER SQUARE YARD (SQUARE METER) FOR "HOT-MIX ASPHALT SURFACE REMOVAL - BUTT JOINT" OR FOR "PORTLAND CEMENT CONCRETE SURFACE REMOVAL - BUTT JOINT".

REVISIONS	
NAME	DATE
M. DE YONG	6-13-90
M. DE YONG	7-3-90
M. DE YONG	3-27-92
R. SHAH	09/09/94
R. SHAH	10/26/94
A. ABBAS	03/21/97
M. COMEZ	04/06/01
R. BORO	01/01/07

ILLINOIS DEPARTMENT OF TRANSPORTATION

**BUTT JOINT AND HMA TAPER DETAILS**

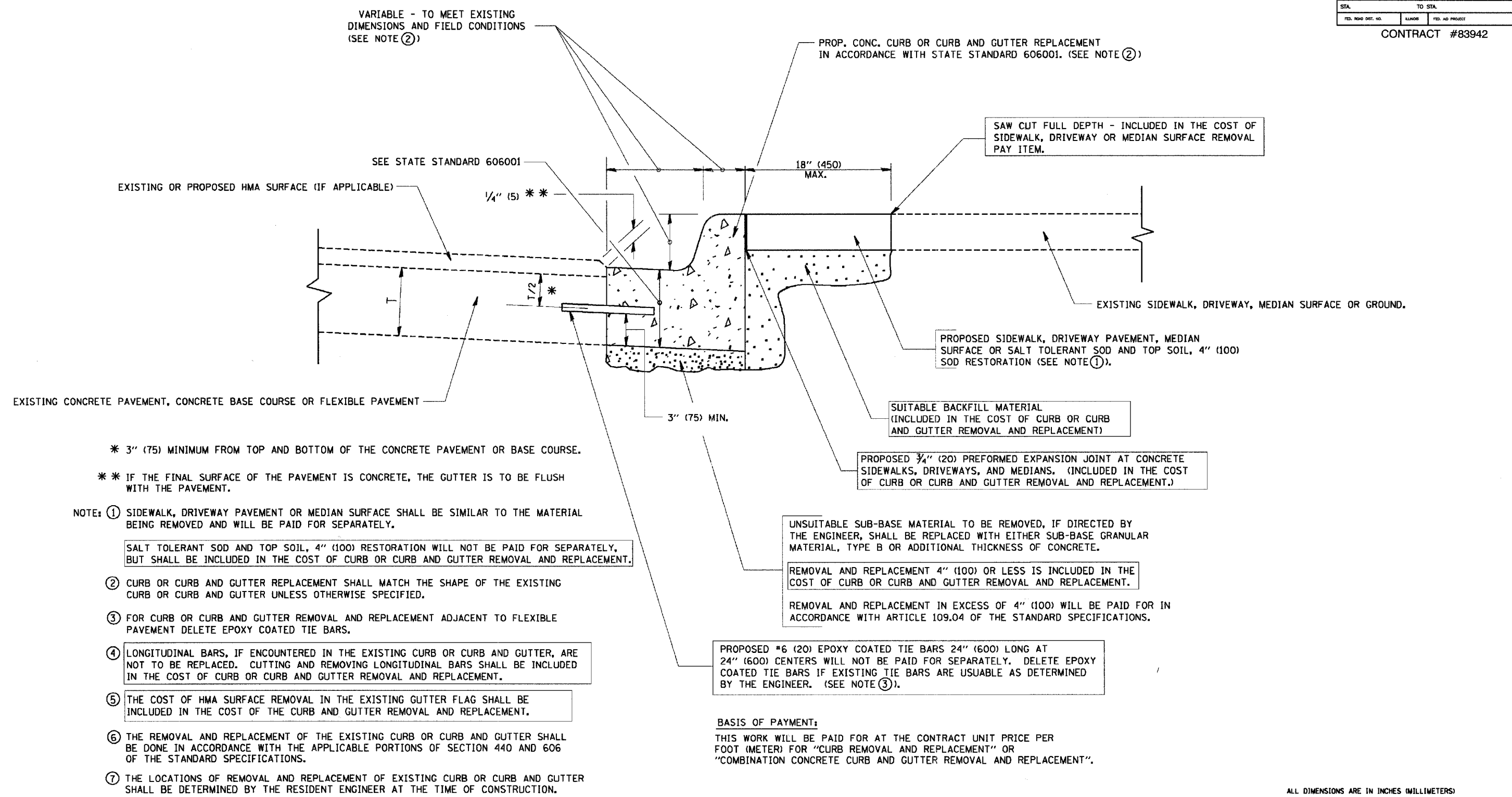
SCALE: VERT. NONE  
HORIZ. 1"=10'

DRAWN BY  
CHECKED BY

BD400-05 (VI=BD32)  
REVISION DATE: 01/01/07

F. A. S. NO.	SECTION	COUNTY	TOTAL SHEETS	SHEET NO.
3800	06-00103-00-FP	COOK	9	8
STA.	TO STA.			
FED. ROAD DIST. NO.	ILLINOIS	FED. AID PROJECT		

CONTRACT #83942



- \* 3" (75) MINIMUM FROM TOP AND BOTTOM OF THE CONCRETE PAVEMENT OR BASE COURSE.
- \*\* IF THE FINAL SURFACE OF THE PAVEMENT IS CONCRETE, THE GUTTER IS TO BE FLUSH WITH THE PAVEMENT.

- NOTE: ① SIDEWALK, DRIVEWAY PAVEMENT OR MEDIAN SURFACE SHALL BE SIMILAR TO THE MATERIAL BEING REMOVED AND WILL BE PAID FOR SEPARATELY.
- SALT TOLERANT SOD AND TOP SOIL, 4" (100) RESTORATION WILL NOT BE PAID FOR SEPARATELY, BUT SHALL BE INCLUDED IN THE COST OF CURB OR CURB AND GUTTER REMOVAL AND REPLACEMENT.
- ② CURB OR CURB AND GUTTER REPLACEMENT SHALL MATCH THE SHAPE OF THE EXISTING CURB OR CURB AND GUTTER UNLESS OTHERWISE SPECIFIED.
- ③ FOR CURB OR CURB AND GUTTER REMOVAL AND REPLACEMENT ADJACENT TO FLEXIBLE PAVEMENT DELETE EPOXY COATED TIE BARS.
- ④ LONGITUDINAL BARS, IF ENCOUNTERED IN THE EXISTING CURB OR CURB AND GUTTER, ARE NOT TO BE REPLACED. CUTTING AND REMOVING LONGITUDINAL BARS SHALL BE INCLUDED IN THE COST OF CURB OR CURB AND GUTTER REMOVAL AND REPLACEMENT.
- ⑤ THE COST OF HMA SURFACE REMOVAL IN THE EXISTING GUTTER FLAG SHALL BE INCLUDED IN THE COST OF THE CURB AND GUTTER REMOVAL AND REPLACEMENT.
- ⑥ THE REMOVAL AND REPLACEMENT OF THE EXISTING CURB OR CURB AND GUTTER SHALL BE DONE IN ACCORDANCE WITH THE APPLICABLE PORTIONS OF SECTION 440 AND 606 OF THE STANDARD SPECIFICATIONS.
- ⑦ THE LOCATIONS OF REMOVAL AND REPLACEMENT OF EXISTING CURB OR CURB AND GUTTER SHALL BE DETERMINED BY THE RESIDENT ENGINEER AT THE TIME OF CONSTRUCTION.

PROPOSED 3/4" (20) PREFORMED EXPANSION JOINT AT CONCRETE SIDEWALKS, DRIVEWAYS, AND MEDIANS. (INCLUDED IN THE COST OF CURB OR CURB AND GUTTER REMOVAL AND REPLACEMENT.)

UNSATURATED SUB-BASE MATERIAL TO BE REMOVED, IF DIRECTED BY THE ENGINEER, SHALL BE REPLACED WITH EITHER SUB-BASE GRANULAR MATERIAL, TYPE B OR ADDITIONAL THICKNESS OF CONCRETE.

REMOVAL AND REPLACEMENT 4" (100) OR LESS IS INCLUDED IN THE COST OF CURB OR CURB AND GUTTER REMOVAL AND REPLACEMENT.

REMOVAL AND REPLACEMENT IN EXCESS OF 4" (100) WILL BE PAID FOR IN ACCORDANCE WITH ARTICLE 109.04 OF THE STANDARD SPECIFICATIONS.

PROPOSED #6 (20) EPOXY COATED TIE BARS 24" (600) LONG AT 24" (600) CENTERS WILL NOT BE PAID FOR SEPARATELY. DELETE EPOXY COATED TIE BARS IF EXISTING TIE BARS ARE USUABLE AS DETERMINED BY THE ENGINEER. (SEE NOTE ③).

**BASIS OF PAYMENT:**  
THIS WORK WILL BE PAID FOR AT THE CONTRACT UNIT PRICE PER FOOT (METER) FOR "CURB REMOVAL AND REPLACEMENT" OR "COMBINATION CONCRETE CURB AND GUTTER REMOVAL AND REPLACEMENT".

ALL DIMENSIONS ARE IN INCHES (MILLIMETERS) UNLESS OTHERWISE SHOWN.

# CURB OR CURB AND GUTTER REMOVAL AND REPLACEMENT

REVISIONS	
NAME	DATE
A. HOUSEH	03/11/94
R. SHAH	02/24/95
R. SHAH	03/02/95
R. SHAH	08/19/96
R. SHAH	09/12/96
R. SHAH	09/19/96
R. SHAH	10/03/96
A. ABBAS	03/21/97
M. GOMEZ	01/22/01
R. BORO	01/01/07

ILLINOIS DEPARTMENT OF TRANSPORTATION

CURB OR CURB AND GUTTER REMOVAL AND REPLACEMENT

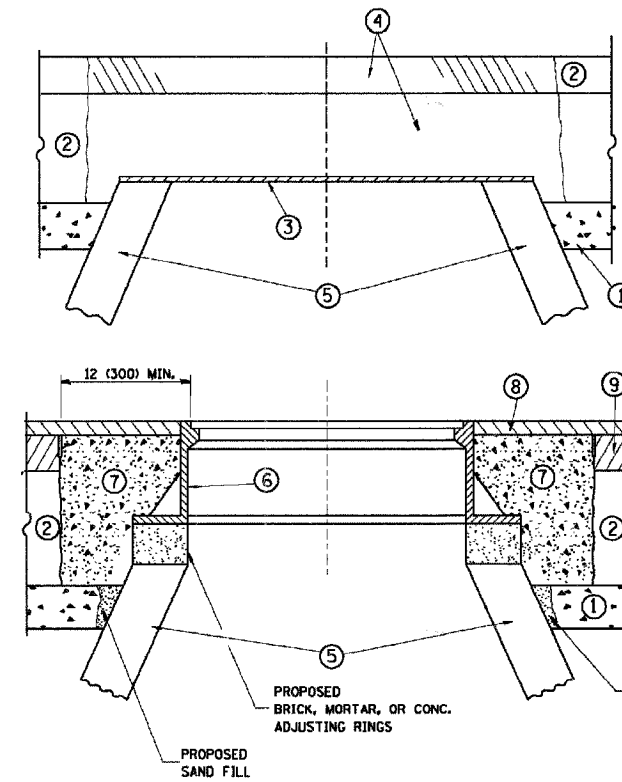
SCALE: VERT. NONE  
HORIZ. NONE

DRAWN BY  
CHECKED BY  
BD600-06 (BD-24)



F. A. D. NO.	SECTION	COUNTY	TOTAL SHEETS	SHEET NO.
3800	08-00103-00-FP	COOK	9	9
STA.	TO STA.			
FED. ROAD DIST. NO.	BLANKS	FED. AID PROJECT		

CONTRACT #83942



**CONSTRUCTION PROCEDURES**

**STAGE 1 (BEFORE PAVEMENT MILLING)**

- A) REMOVE A MINIMUM OF 12 (300) OF THE PAVEMENT FROM AROUND THE STRUCTURE.
- B) REMOVE THE EXISTING FRAME AND LID FROM THE STRUCTURE.
- C) COVER THE STRUCTURE OPENING WITH A 36 (900) DIAMETER METAL PLATE.
- D) BACKFILL WITH CRUSHED STONE AND A MINIMUM 1 1/2 (40) THICK HMA SURFACE MIX APPROVED BY THE ENGINEER.

**STAGE 2 (AFTER PAVEMENT MILLING)**

- A) REMOVE THE HMA SURFACE MIX AND CRUSHED STONE.
- B) INSTALL THE FRAME AND LID; ADJUST THE FRAME TO ITS FINAL SURFACE ELEVATION.
- C) THE SURROUNDING SPACE SHALL BE FILLED WITH CLASS SI CONCRETE, OR HMA SURFACE COURSE OR HMA BINDER COURSE TO THE ELEVATION OF THE SURFACE OF THE EXISTING BASE COURSE OR THE BINDER COURSE.

THE PROCEDURE EXPLAINED ABOVE SHALL CONFORM TO THE APPLICABLE PORTIONS OF SECTIONS 353, 406, 602, AND 603 OF THE STANDARD SPECIFICATIONS.

**LEGEND**

- ① SUB-BASE GRANULAR MATERIAL
- ② EXISTING PAVEMENT
- ③ 36 (900) DIAMETER METAL PLATE
- ④ PROPOSED CRUSHED STONE AND HMA SURFACE MIX
- ⑤ EXISTING STRUCTURE
- ⑥ FRAME AND LID (SEE NOTES)
- ⑦ CLASS SI CONCRETE, HMA SURFACE COURSE OR HMA BINDER COURSE
- ⑧ PROPOSED HMA SURFACE COURSE
- ⑨ PROPOSED HMA BINDER COURSE

**NOTES:**

EXISTING BROKEN FRAMES AND LIDS SHALL BE REMOVED AND DISPOSED OF BY THE CONTRACTOR AND SHALL BE REPLACED AS DIRECTED BY THE ENGINEER. REPLACEMENT FRAMES AND LIDS WILL BE PAID FOR IN ACCORDANCE WITH ARTICLE 109.04 OF THE STANDARD SPECIFICATIONS UNLESS A SEPARATE PAY ITEM HAS BEEN PROVIDED.

IF THE EXISTING LIDS ARE OPEN, THE FRAME WILL BE ADJUSTED TO THE ELEVATION OF THE MILLED PAVEMENT SURFACE PRIOR TO THE MILLING OPERATION. THE FRAME WILL NOT BE REMOVED AND COVERED BY THE METAL PLATE.

CITY OF CHICAGO CASTINGS ARE THE PROPERTY OF THE CITY AND THE CONTRACTOR SHALL NOTIFY THE CITY FOR REMOVAL AND DISPOSITION OF THE CASTINGS.

THE METAL PLATE USED TO COVER THE STRUCTURE SHALL REMAIN THE PROPERTY OF THE CONTRACTOR.

WHEN STRUCTURES ARE TO BE ADJUSTED OR RECONSTRUCTED, THE LOWERING AND RAISING OF THE FRAMES AND LIDS WILL NOT BE PAID FOR SEPARATELY BUT WILL BE INCLUDED IN THE COST OF THE CORRESPONDING PAY ITEM.

**LOCATION OF STRUCTURES:**

THE CONTRACTOR WILL BE REQUIRED TO KEEP A RECORD OF THE LOCATIONS OF THE BURIED STRUCTURES ACCORDING TO THE STATION AND DISTANCE LEFT OR RIGHT OF THE CENTERLINE OF PAVEMENT. UPON COMPLETION OF THE WORK, THE CONTRACTOR WILL DELIVER THE RECORD TO THE ENGINEER.

**BASIS OF PAYMENT:** THIS WORK WILL BE PAID FOR AT THE CONTRACT UNIT PRICE PER EACH FOR "FRAMES AND LIDS TO BE ADJUSTED, SPECIAL"

NEW FRAMES AND LIDS, WHEN SPECIFIED, WILL BE PAID FOR SEPARATELY.

**DETAILS FOR FRAMES AND LIDS ADJUSTMENT WITH MILLING**

ALL DIMENSIONS ARE IN INCHES (MILLIMETERS) UNLESS OTHERWISE SHOWN

REVISIONS	
NAME	DATE
R. SHAH	10/25/94
R. SHAH	01/30/95
R. SHAH	03/10/95
A. ABBAS	03/21/97
R. WIEDEMAN	05/14/04
R. BORO	01/01/07

ILLINOIS DEPARTMENT OF TRANSPORTATION  
**DETAILS FOR  
FRAMES AND LIDS ADJUSTMENT  
WITH MILLING**

SCALE: VERT. NONE  
HORIZ.

DRAWN BY  
CHECKED BY

BD600-03 (BD-B)