

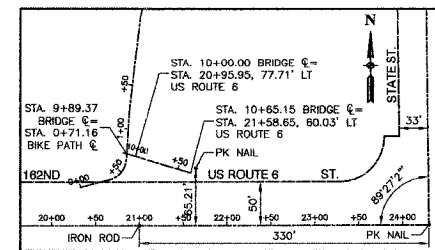
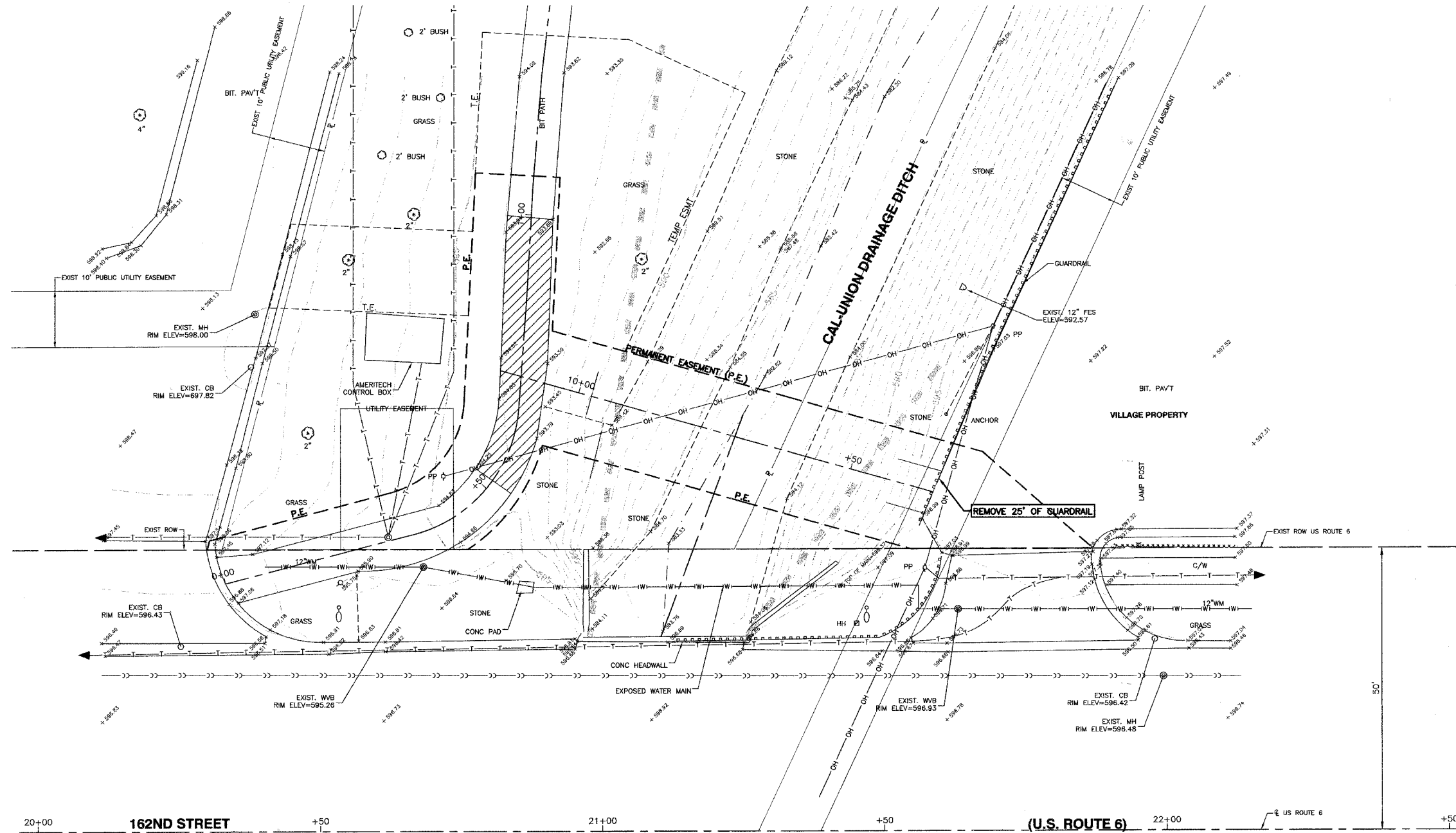
F. A. L. SHEET	SECTION	COUNTY	TOTAL SHEETS	SHEET NO.
06-00082-00-BR	COOK	008	003	
STA.	TO STA.			
FED. ROAD DIST. NO.	LANE	FED. AID PROJECT		

CONTRACT NO. 83948



LEGEND

- EXISTING LIMITS OF FLOODWAY
- PROPOSED PAVEMENT REMOVAL



ALIGNMENT & TIES
SCALE: 1"=100'

BENCH MARK:
BENCH MARK #156
SQUARE CUT ON NORTH WEST WINGWALL OF
162ND ST. BRIDGE OVER CAL-UNION DITCH
ELEVATION=597.35 (NGVD 29(FEMA))

REVISIONS	
NAME	DATE

ILLINOIS DEPARTMENT OF TRANSPORTATION

**PEDESTRIAN BRIDGE
EXISTING CONDITIONS
ALIGNMENT, TIES & BENCHMARKS**

SCALE: VERT. N/A
HORIZ. 1"=10'
DATE 5-16-07

DRAWN BY EC
CHECKED BY PKB