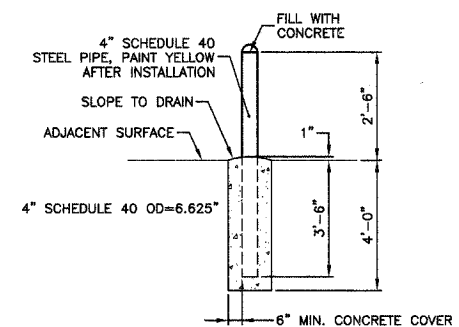
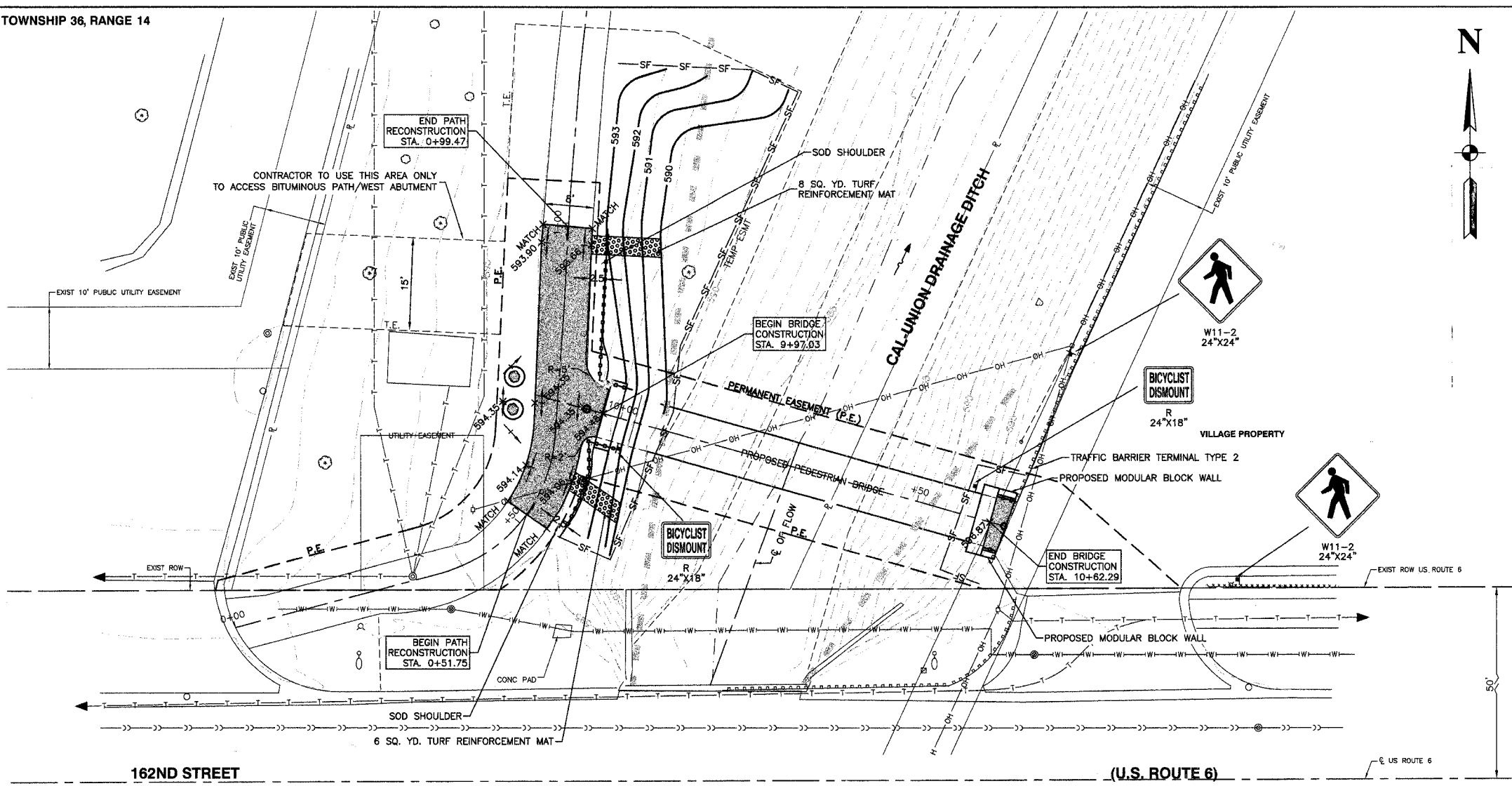
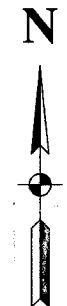


F. A. L. NO.	SECTION	COUNTY	TOTAL SHEETS	SHEET NO.
06-00082-00-BR	COOK	009	004	
STA.	TO STA.			
FED. ROAD DIST. NO.	LANDS	FED. AID PROJECT		

CONTRACT NO. 83948



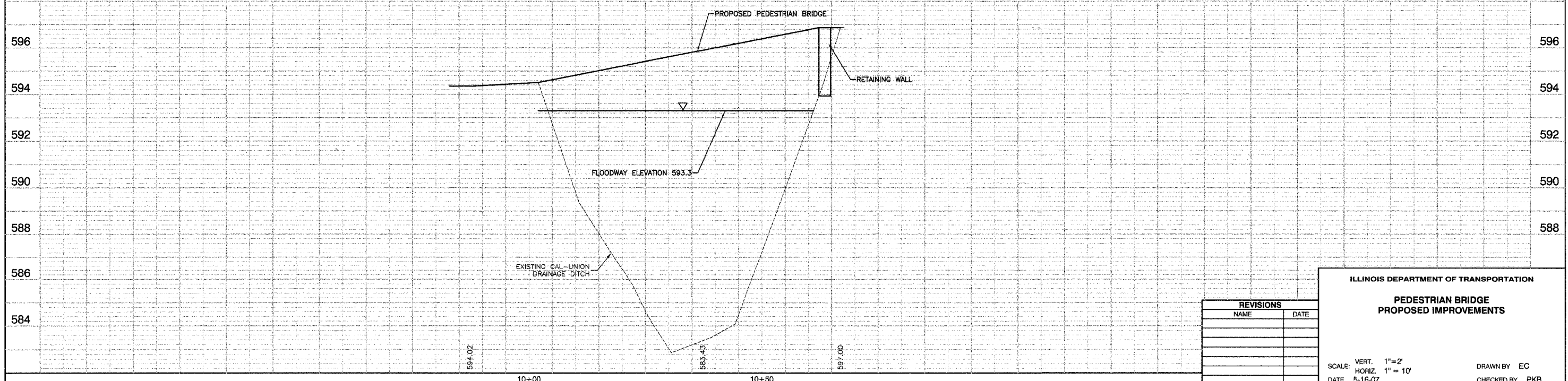
CONCRETE BOLLARD DETAIL
NTS

NOTE: BRIDGE TO BE LIFTED AND SET FROM WEST SIDE OF DITCH.

LEGEND

- PROPOSED HOT-MIX ASPHALT BIKE PATH
- TURF REINFORCEMENT MAT
- PROPOSED FENCE
- PROPOSED SHRUB - CORNUS SERICEA CARDINAL
- PROPOSED CONCRETE BOLLARD
- EXISTING LIMITS OF FLOODWAY
- SILT FENCE

BENCH MARK:
BENCH MARK #156
SQUARE CUT ON NORTH WEST WINGWALL OF
162ND ST. BRIDGE OVER CAL-UNION DITCH
ELEVATION=597.35 (NGVD 29(FEMA))



REVISIONS	
NAME	DATE

ILLINOIS DEPARTMENT OF TRANSPORTATION

**PEDESTRIAN BRIDGE
PROPOSED IMPROVEMENTS**

SCALE: VERT. 1"=2'
HORIZ. 1"=10'

DATE 5-16-07

DRAWN BY EC
CHECKED BY PKB