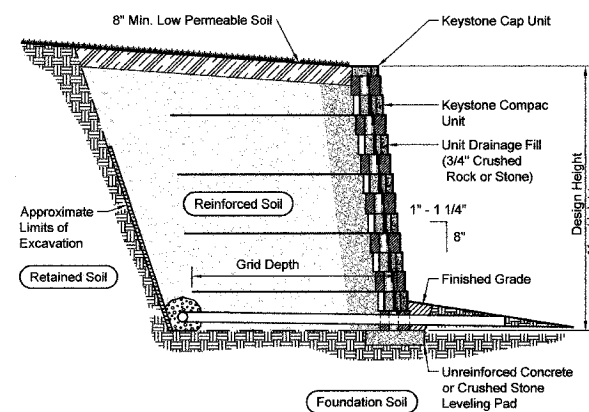


F. A. L. NO.	SECTION	COUNTY	TOTAL SHEETS	SHEET NO.
	06-00082-00-BR	COOK	009	008
STA.	TO STA.			
FED. ROAD DIST. NO.	SLAB NO.	FED. AID PROJECT		

CONTRACT NO. 83948

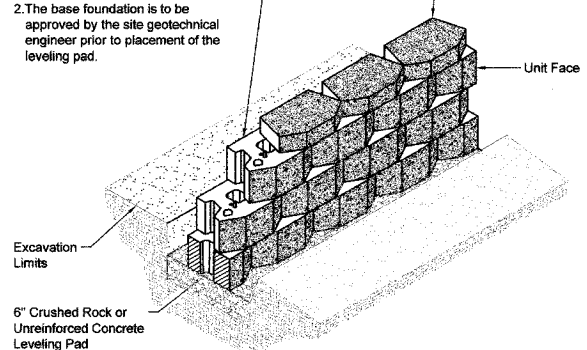


**Typical Reinforced Wall Section**  
Compac Unit - 1" Setback

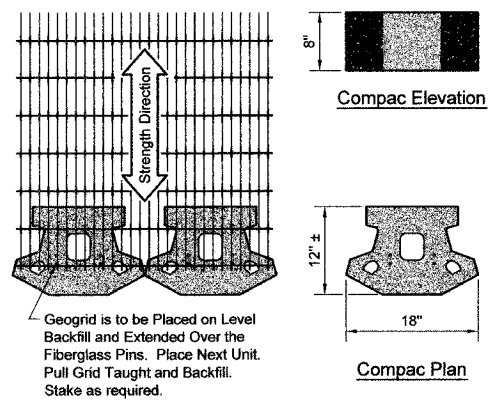
**Base Leveling Pad Notes:**

- The leveling pad is to be constructed of crushed stone or 2,000 psiz unreinforced concrete.
- The base foundation is to be approved by the site geotechnical engineer prior to placement of the leveling pad.

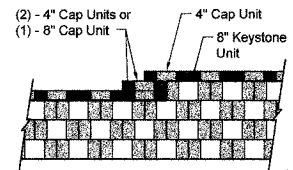
Compac Unit	Cap Unit
Width: 18"	Width: 18"
*Depth: 12"	*Depth: 10 1/2"
Height: 8"	Height: 4"
*Weight: 85 lbs	*Weight: 45 lbs



**Compac Unit/Base Pad Isometric Section View**  
\* Dimensions & Weight May Vary by Region

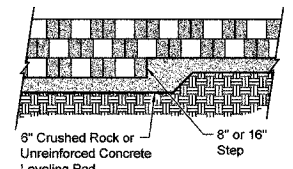


**Grid & Pin Connection**  
\* Dimensions May Vary by Region



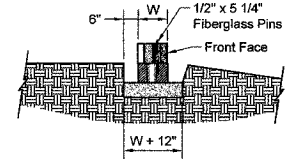
**Note:**  
1. Secure all cap units with Keystone Kapseal or equal.

**Top of Wall Steps**

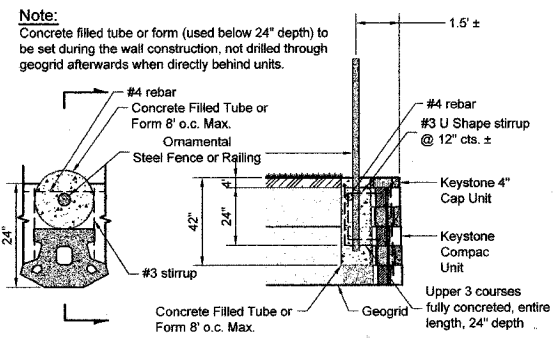


**Elevation**

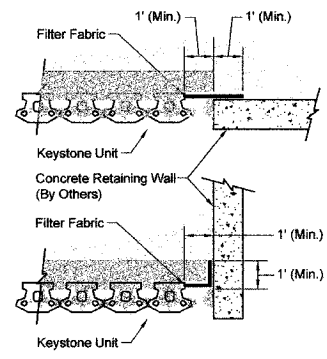
**Note:**  
1. The leveling pad is to be constructed of crushed stone or 2000 psi ± unreinforced concrete.



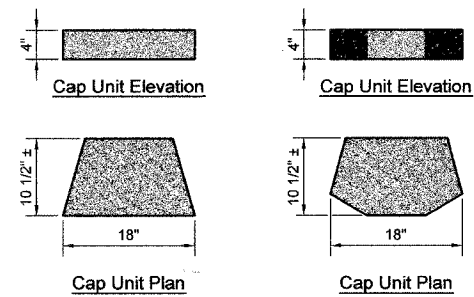
**Section**  
**Leveling Pad Detail**



**Fence Plan Detail**  
**Fence Section & Plan Detail**  
Compac Unit - 1" Setback

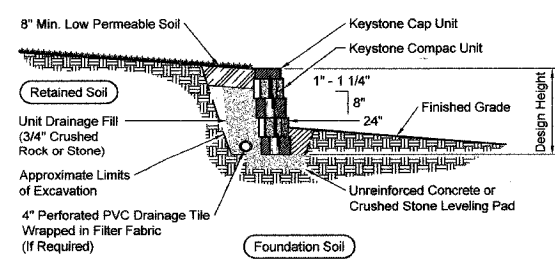


**Connection Details**  
Compac Unit - Shown



**Cap Unit Elevation**  
**Cap Unit Plan**  
**Universal Cap Unit Option**  
\* Dimensions & Availability Will Vary by Region

**Cap Unit Elevation**  
**Cap Unit Plan**  
**3-Plane Split Cap Unit Option**  
\* Dimensions & Availability Will Vary by Region



**Typical Gravity Wall Section**  
Compac Unit - 1" Setback

NOTE: MAXIMUM HEIGHT OF THE RETAINING WALL IS 2 FEET.

REVISIONS	
NAME	DATE

ILLINOIS DEPARTMENT OF TRANSPORTATION  
**PEDESTRIAN BRIDGE  
MODULAR BLOCK RETAINING WALL  
TYPICAL DETAILS**

SCALE: VERT. N/A  
HORIZ. N/A  
DATE: 5-16-07  
DRAWN BY: EC  
CHECKED BY: PKB