

ROUTE NO.	SECTION	COUNTY	TOTAL SHEETS	SHEET NO.
FAS 621	05-00075-05-RS	SANGAMON	72	11

CONTRACT NO. 93439

\* OFFSETS FROM  $\odot$  SURVEY

CH 10 -  $\odot$  SURVEY ALIGNMENT COORDINATES

STATION	*OFFSET	DESCRIPTION	NORTHING	EASTING
0+11.71	-	SCHD PI 113	1063650.38	2364263.17
3+96.00	-	PI	1064057.99	2364253.78
7+51.31	-	PI	1064413.23	2364246.80
10+50.62	-	PI	1064712.51	2364242.80
15+00.72	-	PI	1065162.56	2364236.13
26+69.79	-	SCHD PI 111	1066331.54	2364222.43

CH 10 -  $\odot$  CONSTRUCTION ALIGNMENT COORDINATES

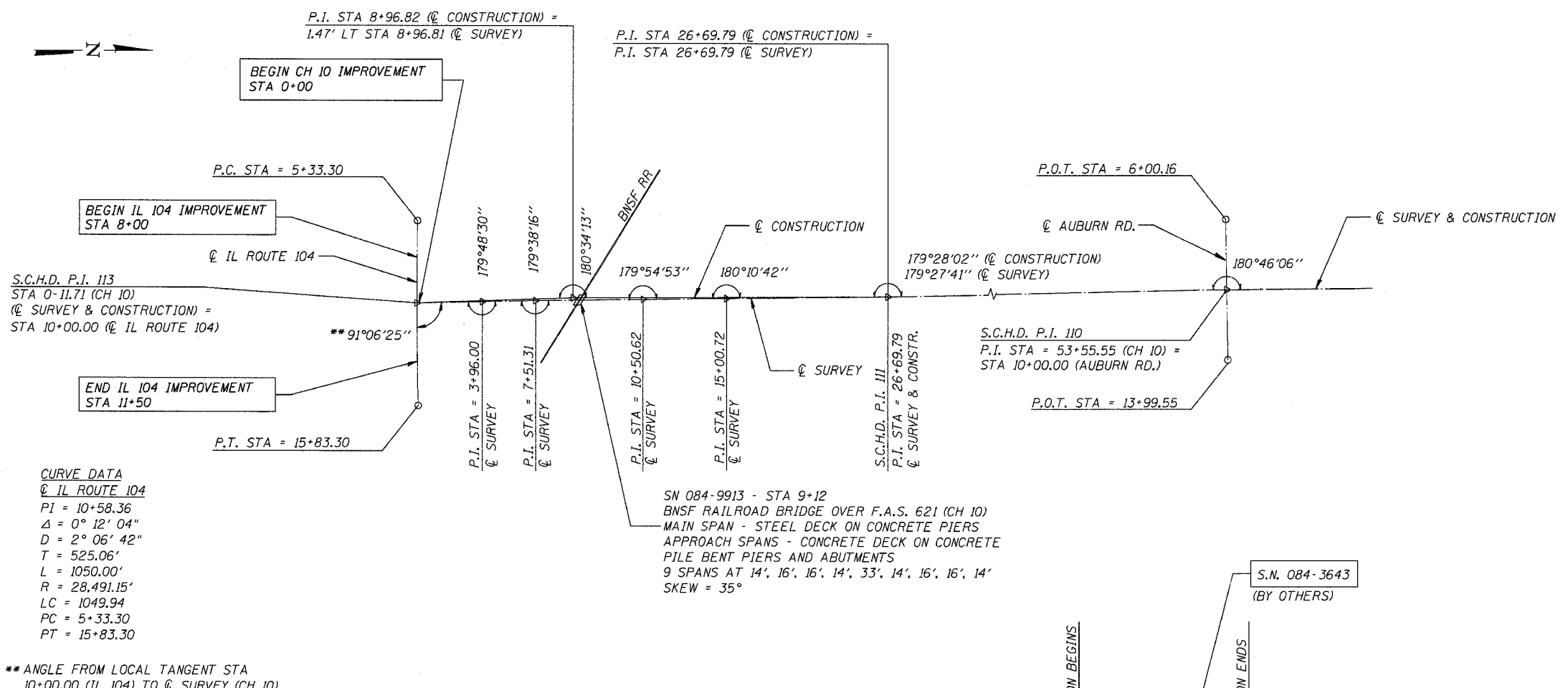
STATION	*OFFSET	DESCRIPTION	NORTHING	EASTING
0+11.71	-	SCHD PI 113	1063650.38	2364263.17
8+96.82	1.47' LT	PI	1064558.69	2364243.39
26+69.79	-	SCHD PI 111	1066331.54	2364222.43

CH 10 -  $\odot$  SURVEY & CONSTRUCTION ALIGNMENT COORDINATES

STATION	*OFFSET	DESCRIPTION	NORTHING	EASTING
26+69.79	-	SCHD PI 111	1066331.54	2364222.43
53+55.55	-	SCHD PI 110	1069016.70	2364165.71
79+83.67	-	SCHD PI 108	1071644.74	2364145.45
106+32.40	-	PI	1074293.39	2364124.53
140+65.70	-	SCHD PI 107	1077726.48	2364086.75
186+91.66	-	SCHD PI 106	1082352.04	2364026.05
227+67.70	-	SCHD PI 105	1086427.81	2363978.51
259+57.02	-	SCHD PI 103	1089617.10	2363965.67
272+22.56	-	SCHD PI 102	1090882.06	2363927.17
309+18.61	-	SCHD PI 101	1094577.74	2363875.46
319+71.44	-	SCHD PI 128	1095630.51	2363863.74

SIDE ROAD ALIGNMENT COORDINATES

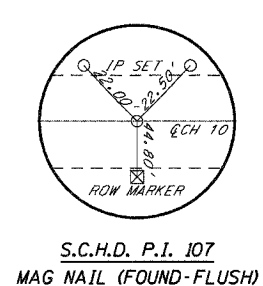
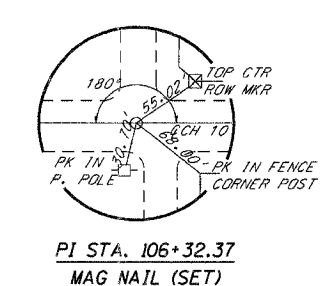
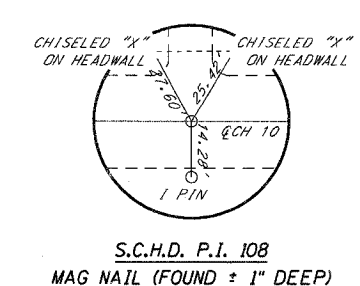
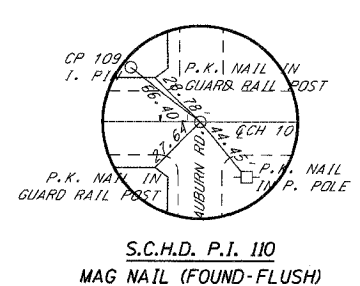
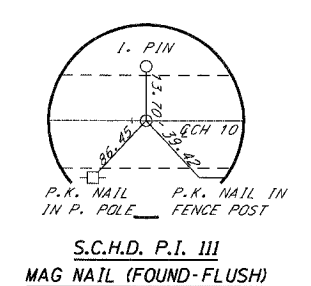
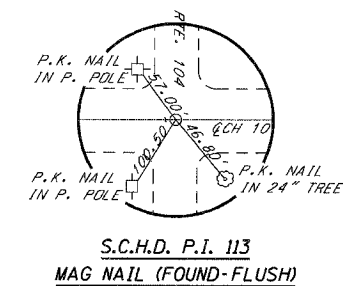
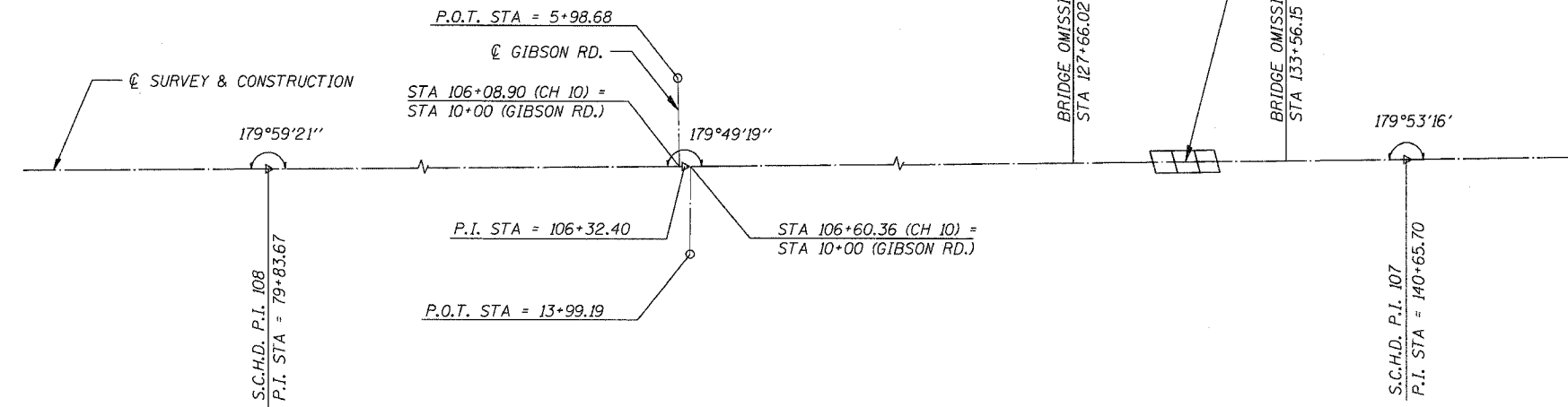
STATION	DESCRIPTION	NORTHING	EASTING
<b>IL ROUTE 104</b>			
5+33.30	PC	1063653.08	2363796.46
10+58.36	PI	1063645.76	2364321.47
15+83.30	PT	1063657.8	2364846.4
<b>AUBURN ROAD</b>			
6+00.16	POT	1069010.4	2363765.92
13+99.55	POT	1069023	2364565.21
<b>GIBSON ROAD WEST</b>			
5+98.68	POT	1074262.26	2363723.47
10+00.00	POT	1074269.92	2364124.72
<b>GIBSON ROAD EAST</b>			
10+00.00	POT	1074321.38	2364124.22
13+99.19	POT	1074318.42	2364523.4



**CURVE DATA**  
 $\odot$  IL ROUTE 104  
 PI = 10+58.36  
 $\Delta$  = 0° 12' 04"  
 D = 2° 06' 42"  
 T = 525.06'  
 L = 1050.00'  
 R = 28,491.15'  
 LC = 1049.94  
 PC = 5+33.30  
 PT = 15+83.30

\*\* ANGLE FROM LOCAL TANGENT STA 10+00.00 (IL 104) TO  $\odot$  SURVEY (CH 10)

SN 084-9913 - STA 9+12  
 BNSF RAILROAD BRIDGE OVER F.A.S. 621 (CH 10)  
 MAIN SPAN - STEEL DECK ON CONCRETE PIERS  
 APPROACH SPANS - CONCRETE DECK ON CONCRETE PILE BENT PIERS AND ABUTMENTS  
 9 SPANS AT 14', 16', 16', 14', 33', 14', 16', 16', 14'  
 SKEW = 35°



**ALIGNMENT**

FAS 621 (CH 10)  
SECTION 05-00075-05-RS  
SANGAMON COUNTY

CUMMINS ENGINEERING CORPORATION

JOB #: 2171
FILE: 2171ALIGN
DATE: 4/30/07