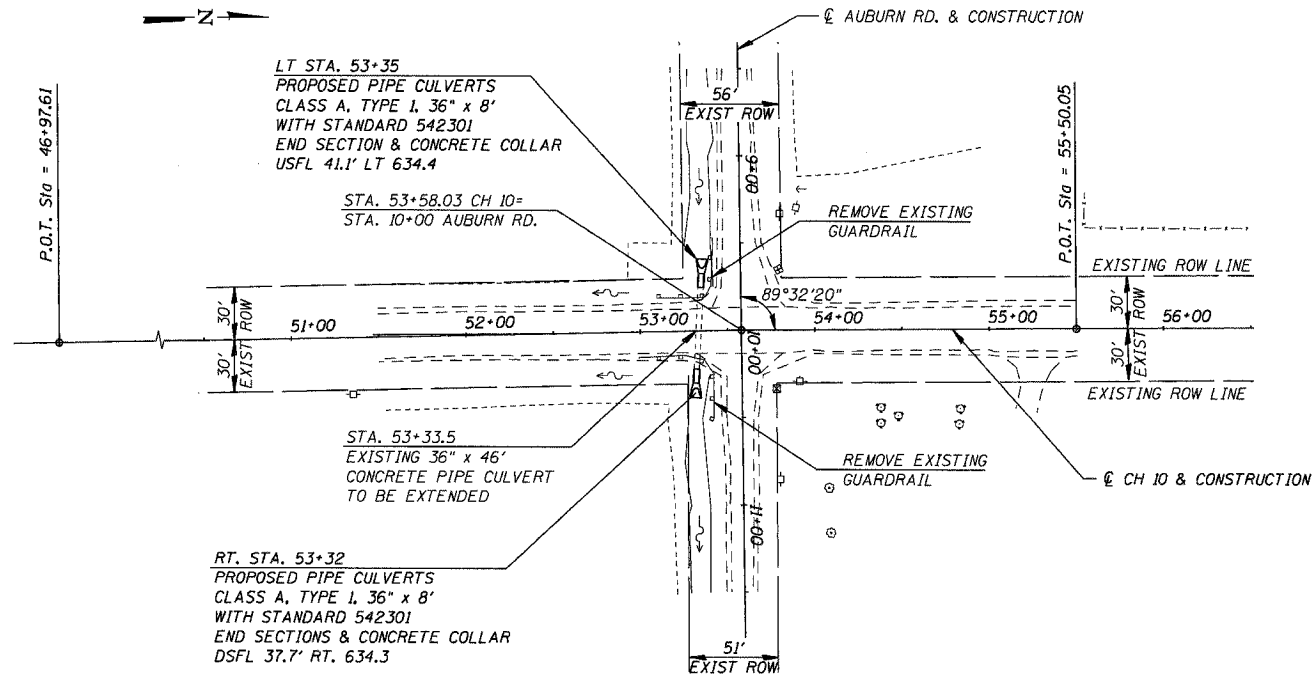


SE 1/4, SEC 1, T13N, R8W, 3RD PM
LOUISE KUMLER

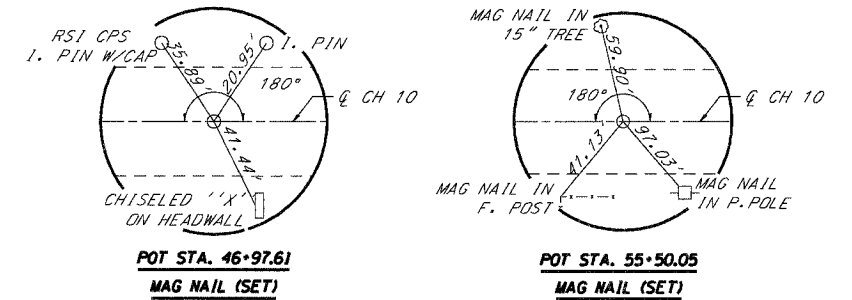
ROUTE	SECTION	COUNTY	TOTAL SHEETS	SHEET NO.
FAS 621	05-00075 -05-R5	SANGAMON	72	18

CONTRACT NO. 93439

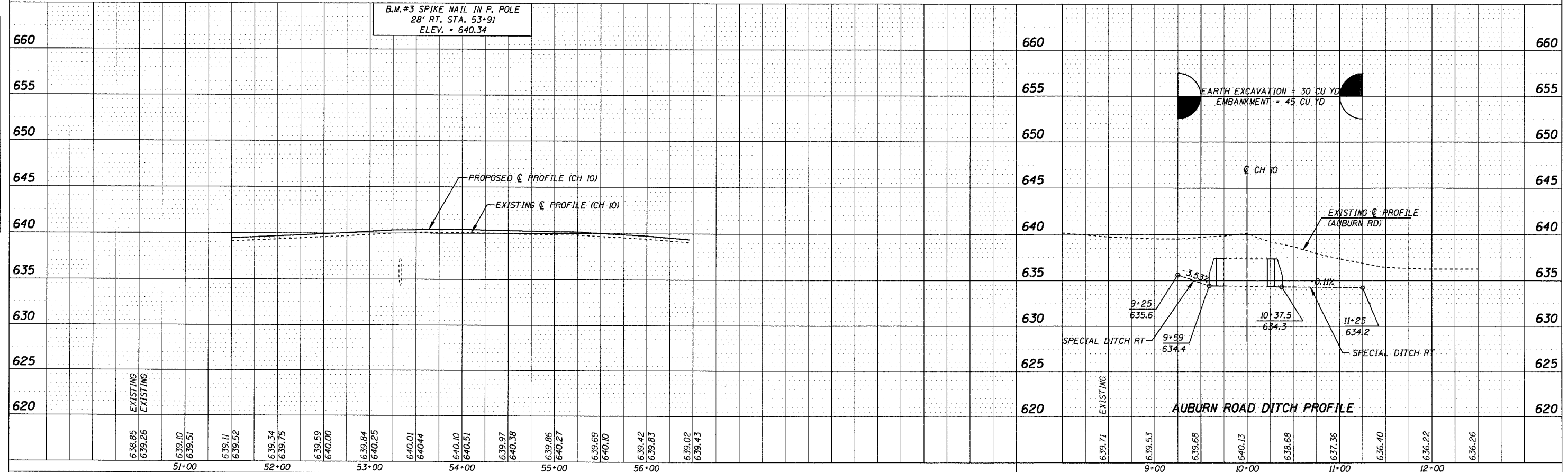
PLAN	DATE	BY
SUPP'D		
PLOTT'D		
NOTED		
NO. 1		



LOUISE KUMLER
SW 1/4, SEC 6, T13N, R7W, 3RD PM



PROFILE	DATE	BY
SUPP'D		
PLOTT'D		
NOTED		
NO. 1		



LOCATION 6 - CH 10 STA. 51+00 TO STA. 56+50