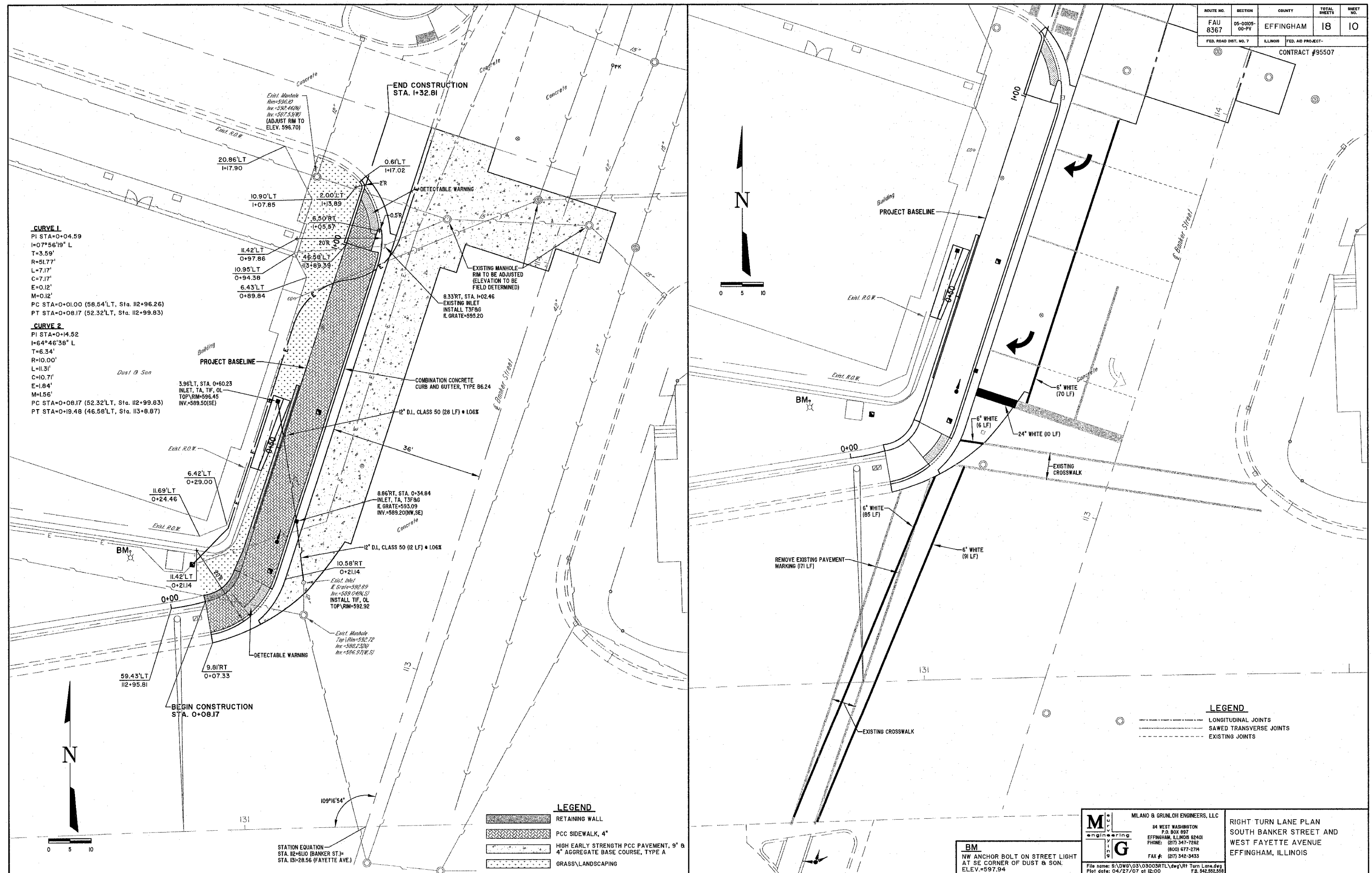


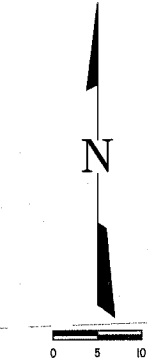
ROUTE NO. FAU 8367	SECTION 05-0005- 00-PV	COUNTY EFFINGHAM	TOTAL SHEETS 18	SHEET NO. 10
FED. ROAD DIST. NO. 7		ILLINOIS	FED. AID PROJECT-	

CONTRACT #95507



**CURVE 1**  
 PI STA=0+04.59  
 I=07°56'19" L  
 T=3.59'  
 R=51.77'  
 L=7.17'  
 C=7.17'  
 E=0.12'  
 M=0.12'  
 PC STA=0+01.00 (58.54' LT, Sta. 112+96.26)  
 PT STA=0+08.17 (52.32' LT, Sta. 112+99.83)

**CURVE 2**  
 PI STA=0+14.52  
 I=64°46'38" L  
 T=6.34'  
 R=10.00'  
 L=11.31'  
 C=10.71'  
 E=1.84'  
 M=1.56'  
 PC STA=0+08.17 (52.32' LT, Sta. 112+99.83)  
 PT STA=0+19.48 (46.58' LT, Sta. 113+8.87)



**LEGEND**

	RETAINING WALL
	PCC SIDEWALK, 4"
	HIGH EARLY STRENGTH PCC PAVEMENT, 9" & 4" AGGREGATE BASE COURSE, TYPE A
	GRASS/LANDSCAPING

**LEGEND**

	LONGITUDINAL JOINTS
	SAWED TRANSVERSE JOINTS
	EXISTING JOINTS

**MILANO & GRUNLOH ENGINEERS, LLC**  
 84 WEST WASHINGTON  
 P.O. BOX 897  
 EFFINGHAM, ILLINOIS 62401  
 PHONE: (217) 347-7252  
 (800) 677-5774  
 FAX #: (217) 342-3435

RIGHT TURN LANE PLAN  
 SOUTH BANKER STREET AND  
 WEST FAYETTE AVENUE  
 EFFINGHAM, ILLINOIS

**BM**  
 NW ANCHOR BOLT ON STREET LIGHT  
 AT SE CORNER OF DUST & SON.  
 ELEV.=597.94

File name: S:\DWG\03\030038TL\dwg\RT Turn Lane.dwg  
 Plot date: 04/27/07 at 12:00 PM  
 FB: 542,552,558