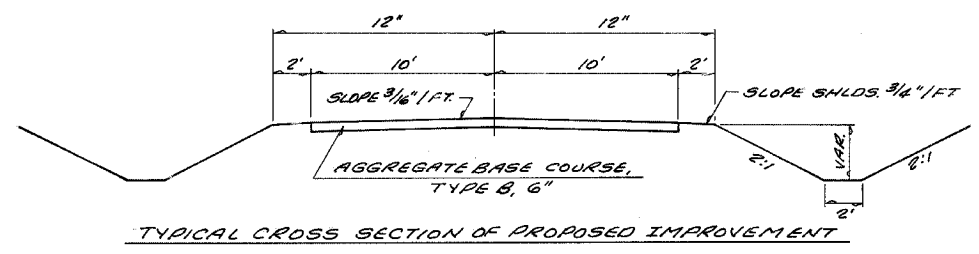
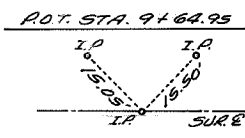
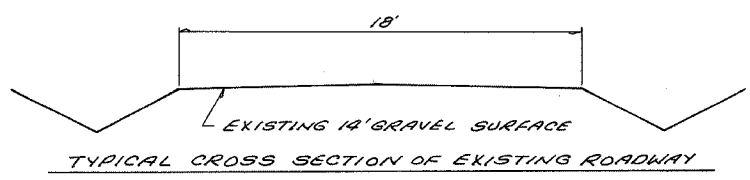


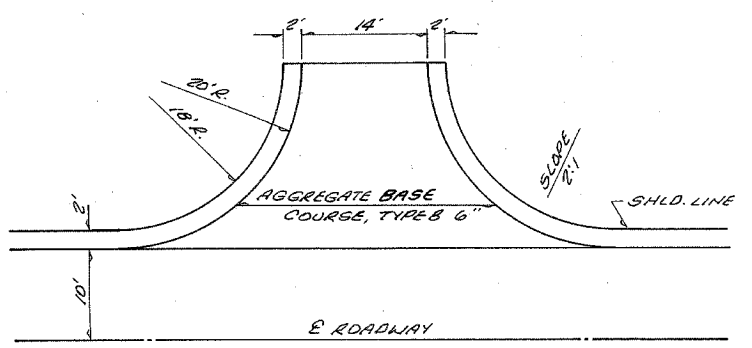
F.A.R. ROUTE NO.	SECTION	COUNTY	TOTAL SHEETS	SHEET
	05-16121-00-BR	WAYNE	10	2
STA.	1400	TO STA.	9+64.95	
FED. ROAD DIST. NO.	ILLINOIS	PROJECT		



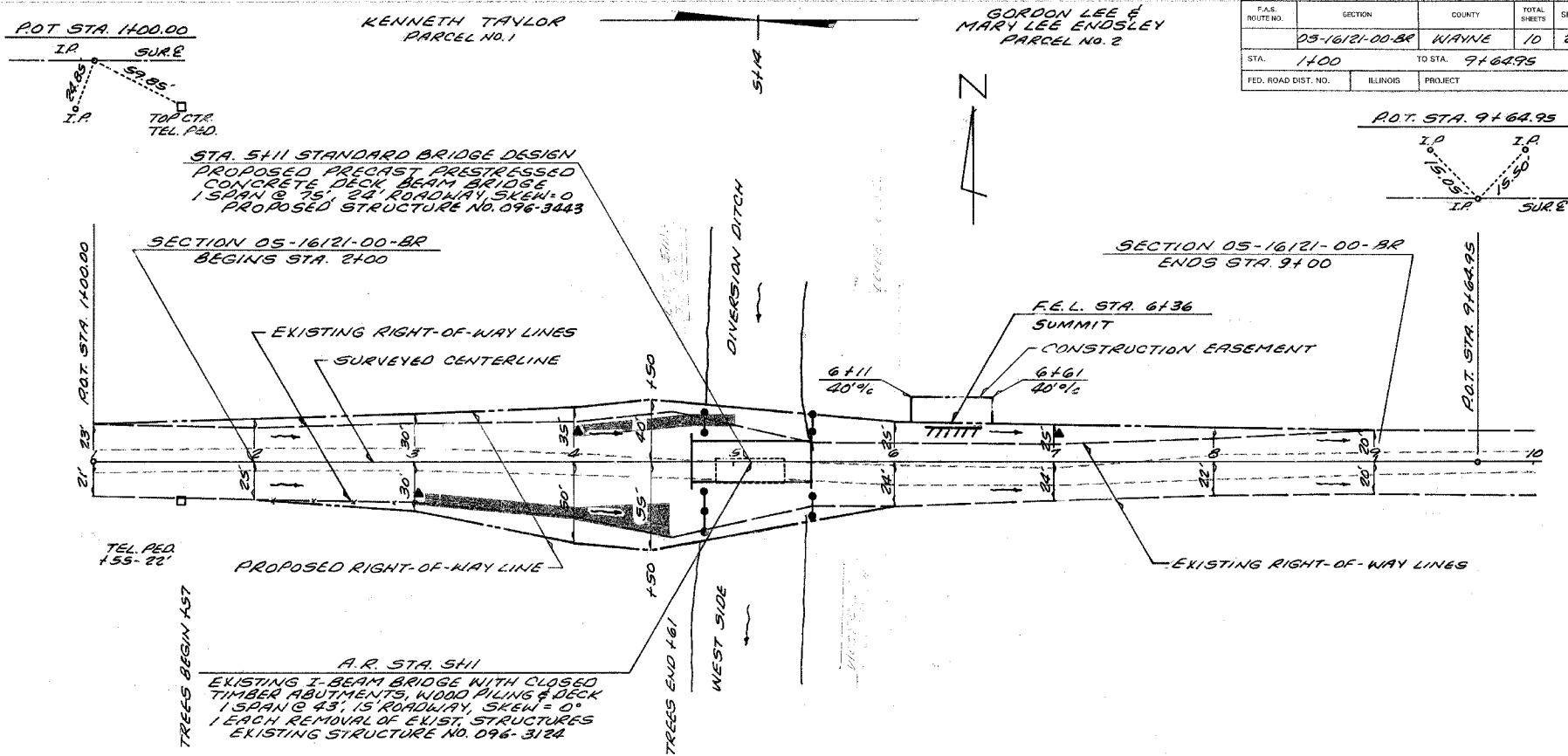
TYPICAL CROSS SECTION OF PROPOSED IMPROVEMENT



TYPICAL CROSS SECTION OF EXISTING ROADWAY



DETAIL OF FIELD ENTRANCES



STA. 5+11 STANDARD BRIDGE DESIGN  
 PROPOSED PRECAST PRESTRESSED CONCRETE DECK BEAM BRIDGE  
 1 SPAN @ 75' 2 1/2' ROADWAY BUCKLE  
 PROPOSED STRUCTURE NO. 096-3443

SECTION 05-16121-00-BR BEGINS STA. 2400  
 SECTION 05-16121-00-BR ENDS STA. 9400  
 EXISTING RIGHT-OF-WAY LINES  
 SURVEYED CENTERLINE  
 PROPOSED RIGHT-OF-WAY LINE  
 EXISTING I-BEAM BRIDGE WITH CLOSED TIMBER ABUTMENTS, WOOD PILING & DECK  
 1 SPAN @ 43' 15" ROADWAY BUCKLE  
 1 EACH REMOVAL OF EXIST. STRUCTURES  
 EXISTING STRUCTURE NO. 096-3124  
 DIVERSION DITCH  
 WEST SIDE  
 TREES BEGIN 157  
 TREES END 161  
 F.E.L. STA. 6136  
 SUMMIT  
 CONSTRUCTION EASEMENT  
 6+11 40%  
 6+61 40%  
 EXISTING RIGHT-OF-WAY LINES

STONE RIPRAP DITCH

RT. STA. 3400 TO STA. 4150 = 48 TON
LT. STA. 4100 TO STA. 5100 = 30 TON
TOTAL = 78 TON

AGGREGATE BASE COURSE, TYPE B

STA. 1400 TO STA. 4473 = 280 TON
STA. 5149 TO STA. 9150 = 300 TON
F.E.L. STA. 6136 = 20 TON
TOTAL = 600 TON

CURTIS G. & VICKIE J. ENDSLEY  
 PARCEL NO. 3  
 A.M. #1 ELEV. 387.57  
 P-K NAIL IN ROOT TRUNK 15"  
 MAPLE, 17" RT. 1 STA. 1460

EARTHWORK SCHEDULE

EARTH EXCAVATION =	463 C.Y.
EARTH EXCAVATION ADJUSTED 25% =	347 C.Y.
CHANNEL EXCAVATION =	200 C.Y.
CHANNEL EXCAVATION ADJUSTED 25% =	150 C.Y.
EMBANKMENT =	1137 C.Y.
FURNISHED EXCAVATION =	640 C.Y.

PERIMETER EROSION BARRIER

LT. STA. 4180 = 20 FT
RT. STA. 4180 = 30 FT
LT. STA. 5150 = 10 FT
RT. STA. 5150 = 15 FT
TOTAL = 75 FT

TEMPORARY DITCH CHECKS

RT. STA. 3400 = 1 EA.
LT. STA. 4100 = 1 EA.
LT. STA. 7100 = 1 EA.
TOTAL = 3 EA.

HAROLD & ELINOR J. BUNNAGE  
 PARCEL NO. 4

CONSTRUCT TRANSITIONS

FROM EXISTING ROADWAY TO PROPOSED 24' ROADWAY  
 STA. 1400 TO STA. 2100  
 STA. 8150 TO STA. 9150  
 (EARTHWORK & AGGREGATE BASE COURSE QUANTITIES INCLUDED IN THOSE LISTED)

TREE REMOVAL ACRES

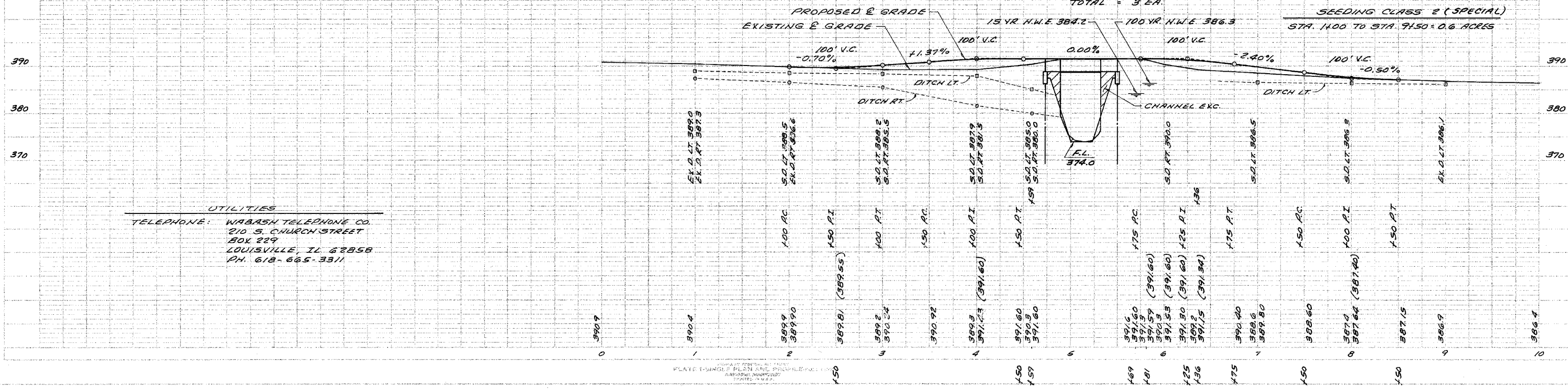
RT. STA. 1157 TO STA. 4161 = 0.25 ACRES
---

TREE REMOVAL (OVER 15 UNITS DIA.)

3.5' LT. STA. 6171 = 60 UNITS
-------------------------------

SEEDING CLASS 2 (SPECIAL)

STA. 1400 TO STA. 9150 = 0.6 ACRES
------------------------------------



UTILITIES  
 TELEPHONE: WABASH TELEPHONE CO.  
 210 S. CHURCH STREET  
 BOX 229  
 LOUISVILLE, IL 62858  
 PH. 618-665-3311