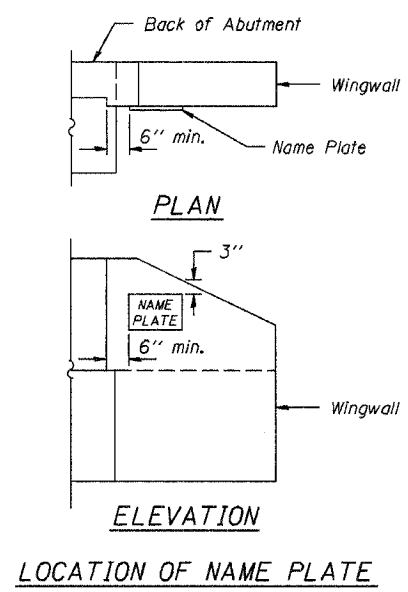


DETAIL OF NAME PLATE

Material: Best quality brass or bronze.
 Border & Lettering: Raised $\frac{1}{8}$ inch. Square cut and not tapered. Top surface polished.
 Fastenings: Four lugs at least three inches long, cast on back of plate.

SECTIONS D-D



LOCATION OF NAME PLATE

Illinois Department of Transportation

PASSED APRIL 4, 2005
Thomas S. Romagosa
 Engineer of Bridge Design

APPROVED APRIL 4, 2005
Ralph E. Anderson
 Engineer of Bridges and Structures

ISSUED 566-7-7

NAME PLATE
 STANDARD CN