

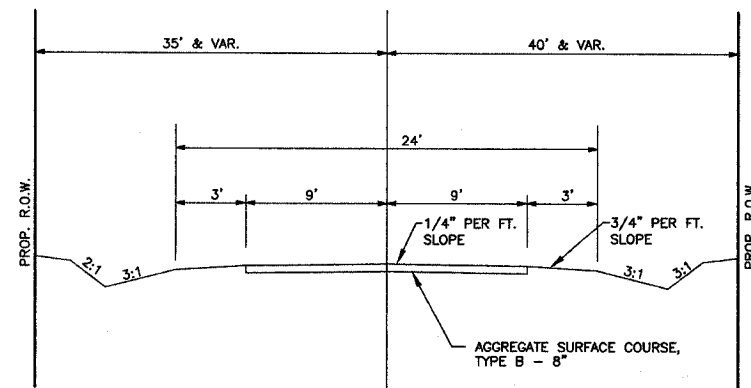
ROUTE	SECTION	COUNTY	TOTAL SHEETS	SHEET NO.
T.R. 284	05-13111-00-BR	EFFINGHAM	13	2
CONTRACT NO. 95519		ILLINOIS	PROJECT BROS-049(153)	

DESIGN DATA

LOCAL ROAD
ADT = 75

GENERAL NOTES

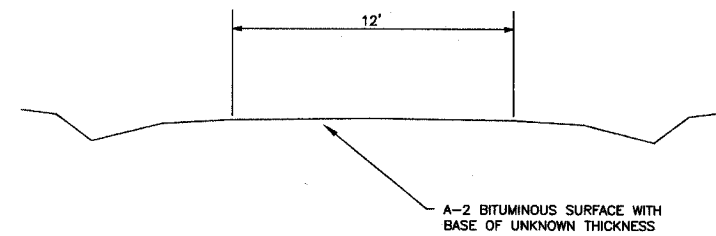
- SEEDING: THIS WORK SHALL BE PERFORMED IN ACCORDANCE WITH THE APPLICABLE PORTIONS OF SECTION 250 OF THE STANDARD SPECIFICATIONS AND SHALL BE PAID FOR AT THE CONTRACT UNIT PRICE FOR SEEDING CLASS 2 (SPECIAL).
 - SPRING SEEDING SHALL EXTEND FROM JANUARY 1 TO JUNE 30
 - FALL SEEDING SHALL EXTEND FROM JULY 1 TO DECEMBER 31
 - FERTILIZER NUTRIENTS SHALL BE APPLIED AT THE RATE OF 100 LB/ACRE
 - MULCHING SHALL BE DONE IN ACCORDANCE WITH ARTICLE 251 OF THE STANDARD SPECIFICATIONS AND SHALL BE DONE BY METHOD 2, PROCEDURE 2 AT THE RATE OF 2 TONS PER ACRE.
2. NO PAYMENT FOR OVERHAUL WILL BE MADE ON THIS SECTION.



TYPICAL SECTION

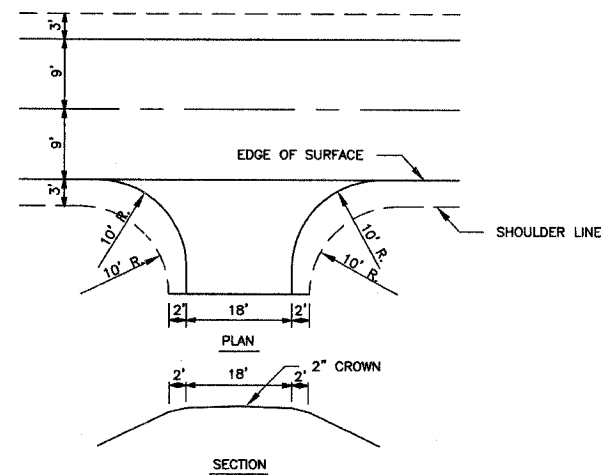
PROPOSED

SUMMARY OF QUANTITIES			
CODE NO.	ITEM	UNIT	QUANTITY
20200100	TREE REMOVAL (OVER 15 UNITS DIAMETER)	UNIT	44
20200100	EARTH EXCAVATION	CU YD	35
20300100	CHANNEL EXCAVATION	CU YD	160
25001000	SEEDING, CLASS 2 (SPECIAL)	ACRE	0.20
28000310	AGGREGATE DITCH CHECKS	EACH	2
28000900	FENCE (EROSION CONTROL)	FOOT	220
28100807	STONE DUMPED RIPRAP, CLASS A4	TON	150
35101400	AGGREGATE BASE COURSE, TYPE B	TON	60
40200800	AGGREGATE SURFACE COURSE, TYPE B	TON	160
50100100	REMOVAL OF EXISTING STRUCTURES	EACH	1
50300225	CONCRETE STRUCTURES	CU YD	18.2
50300280	CONCRETE ENCASEMENT	CU YD	2.1
50400505	PRECAST PRESTRESSED CONCRETE DECK BEAMS (27\"/>		

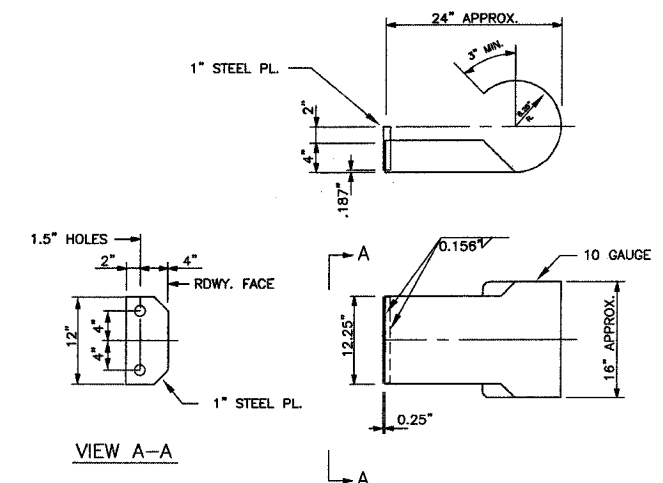


TYPICAL SECTION

EXISTING



FIELD ENTRANCE DETAIL



CURLED END SECTION DETAILS

4 REQUIRED - COST INCLUDED IN
"STEEL RAILING, TYPE S-1"