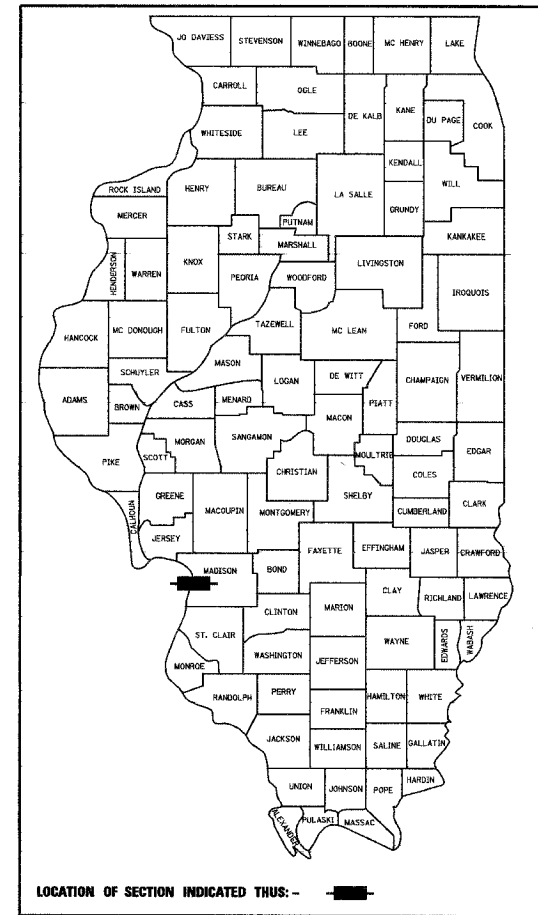


F.A.U. RTE.	SECTION	COUNTY	TOTAL SHEETS	SHEET NO.
9104	05-0001-00-WR	MADISON	102	1
FED. ROAD DIST. NO.	ILLINOIS	FED. AID PROJECT		
CONTRACT NO. 97514				

INDEX OF SHEETS

SHEET NUMBER	DESCRIPTION
1	COVER SHEET
2	GENERAL NOTES AND LEGEND
3	SUMMARY OF QUANTITIES
4 - 12	TYPICAL SECTIONS - EXISTING
13 - 19	TYPICAL SECTIONS - PROPOSED
20 - 22	QUANTITY SCHEDULES
23	REFERENCE POINT TIES, COORDINATES AND BENCHMARKS
24 - 27	ADVANCED WARNING SIGNS & STAGES OF CONSTRUCTION
28 - 41	PLAN AND PROFILE SHEETS
42 - 54	DRAINAGE SHEETS
55 - 58	INTERSECTION GEOMETRIC DETAIL SHEETS
59 - 62	PAVEMENT MARKING SHEET
63 - 67	REMOVAL SHEETS
68 - 70	TRAFFIC SIGNAL SHEETS
71 - 77	EROSION AND SEDIMENT CONTROL SHEETS
78 - 79	MISCELLANEOUS DETAIL SHEETS
80 - 102	CROSS SECTIONS

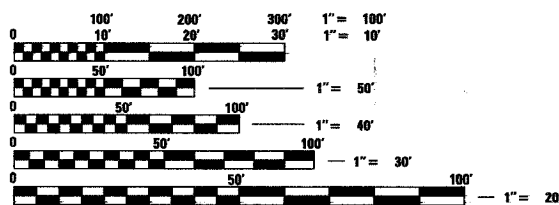
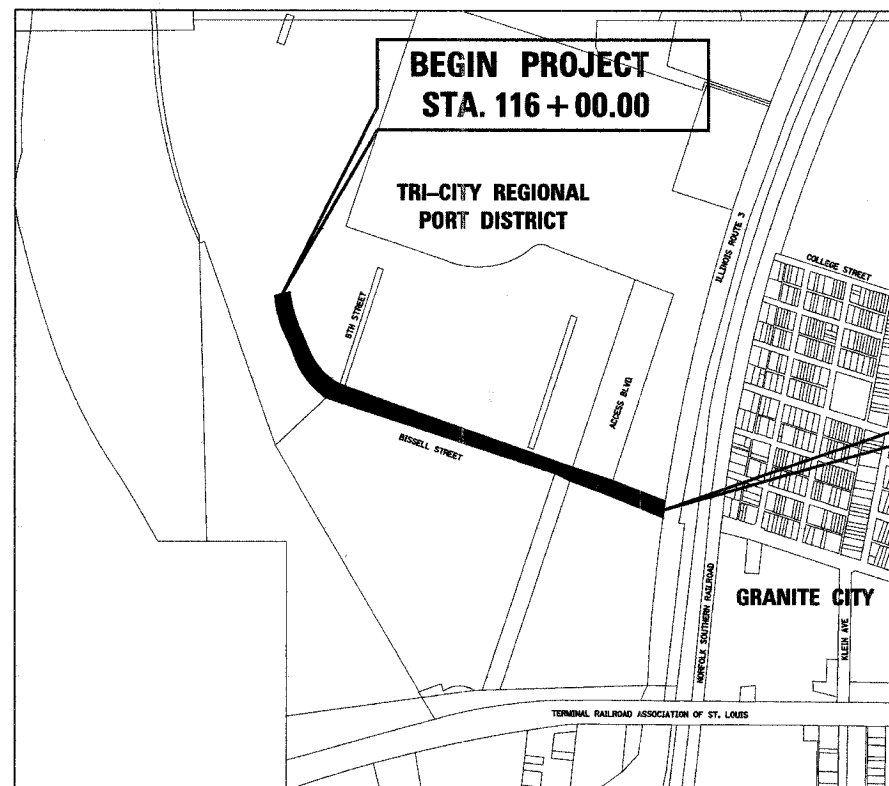
STATE OF ILLINOIS  
DEPARTMENT OF TRANSPORTATION  
DIVISION OF HIGHWAYS  
**BISSELL STREET**  
**TRI-CITY REGIONAL PORT DISTRICT**  
**MADISON, ILLINOIS**  
MADISON COUNTY  
SECTION NO. 05-0001-00-WR  
PROJECT NO. HPP-0144(007)  
JOB NO. C-98-323-06



STANDARDS

STD. NO.	
000001-04	701422-01
001001-01	701602-02
001006	701701-04
280001-03	702001-06
420001-06	720001
420111-01	720006-01
420501-03	720011
420601-04	728001
420701-01	729001
482001-01	731001
482006-02	780001-01
542301-01	857001
602401-01	880006
602701-01	886001
606001-03	886006
606301-03	BLR 22-4
701311-02	

SCALES  
 PLAN 1" = 20'  
 PROFILE HORIZ. 1" = 20'  
 PROFILE VERT. 1" = 5'  
 CROSS SECTIONS 1" = 10' HORIZ.  
 1" = 5' VERT.



FULL SIZE PLANS HAVE BEEN PREPARED USING STANDARD ENGINEERING SCALES, REDUCED SIZED PLANS WILL NOT CONFORM TO STANDARD SCALES, IN MAKING MEASUREMENTS ON REDUCED PLANS, THE ABOVE SCALES MAY BE USED.

J.U.L.I.E.  
JOINT UTILITY LOCATION INFORMATION FOR EXCAVATION  
1-800-892-0123

DESIGN DESIGNATION  
FUNCTIONAL CLASSIFICATION: LOCAL ROAD  
ADT: 500 (2006) 8,400 (2026)  
DNV (2026): 840  
DESIGN SPEED: 30 MPH

LOCATION MAP  
SCALE: 1" = 500'  
NET LENGTH OF PROJECT: 3130.89 FEET - 0.593 MILES  
SECTION 26 & 27, T. 3 N., R. 10 W., 3RD P.M.

MADISON COUNTY

END PROJECT  
STA. 147 + 30.89



Expires 11-30-07

*Brian F. Kulick* 5/29/07  
BRIAN F. KULICK, P.E. No. 49936 DATE  
(Printed by Authority of the State of Illinois)  
Job No. 061300



Juneau Associates, Inc. P.C.  
CONSULTING ENGINEERS AND LAND SURVEYORS  
2100 State Street, P.O. Box 1325  
Springfield, Illinois 62804  
Phone: (618) 877-1400 / (618) 452-5535  
Fax: (618) 452-5541  
100 North Research Drive  
Edwardsville, Illinois 62025  
Phone: (618) 659-0900 / (618) 659-0800  
Fax: (618) 659-0941

STATE OF ILLINOIS  
Department of Transportation

Approved 5-29-07  
*Robert Woods*  
Executive Director, Tri-City Regional Port District

Passed 5-29-07  
*[Signature]*  
District 8 Engineer of Local Roads & Streets

Releasing for Bid  
Based on Limited  
Review 5-29-07  
*[Signature]*  
Deputy Director of Highways, Region 5 Engineer