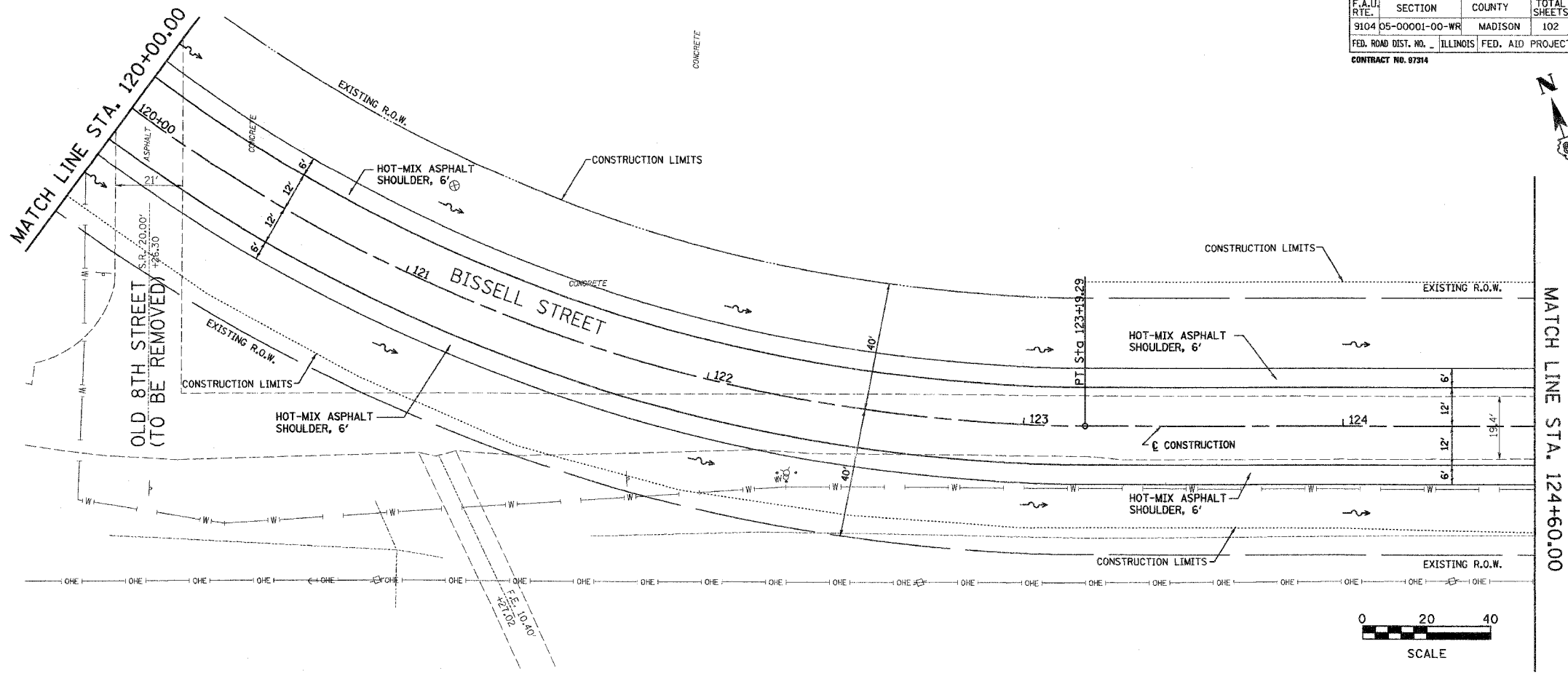
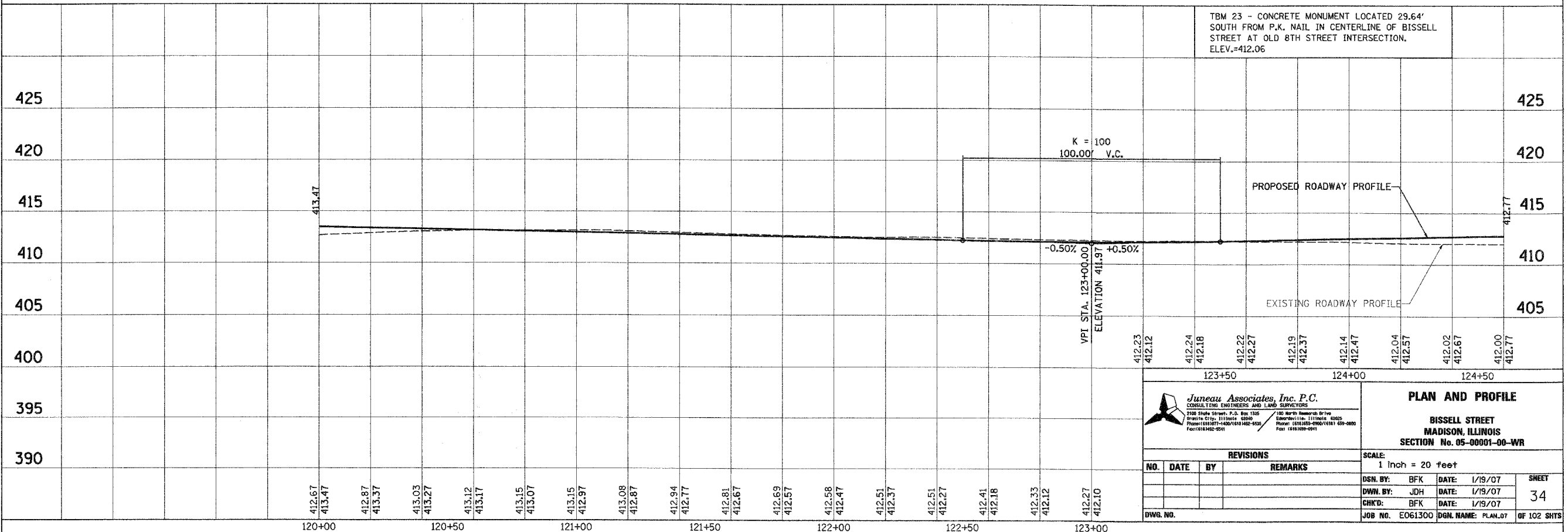


F.A.U. SECTION	COUNTY	TOTAL SHEETS	SHEET NO.
9104 05-00001-00-WR	MADISON	102	34
FED. ROAD DIST. NO. ILLINOIS		FED. AID PROJECT	
CONTRACT NO. 97914			



TBM 23 - CONCRETE MONUMENT LOCATED 29.64' SOUTH FROM P.K. NAIL IN CENTERLINE OF BISSELL STREET AT OLD 8TH STREET INTERSECTION. ELEV.=412.06



Juneau Associates, Inc. P.C.
CONSULTING ENGINEERS AND LAND SURVEYORS
2108 State Street, P.O. Box 1325
Madison, IL 61702-1325
Phone: (618) 937-1400 / (618) 442-5555
Fax: (618) 937-2541

PLAN AND PROFILE
BISSELL STREET
MADISON, ILLINOIS
SECTION No. 05-00001-00-WR

REVISIONS			
NO.	DATE	BY	REMARKS

SCALE: 1 inch = 20 feet		SHEET 34
DSN. BY: BFK	DATE: 1/19/07	
DWN. BY: JDH	DATE: 1/19/07	OF 102 SHEETS
CHK'D: BFK	DATE: 1/19/07	
DWG. NO.	JOB NO. E061300	DGN. NAME: PLAN.07

FINAL SURVEYED	BY	DATE
SURVEY PLOTTED		
NOTE BOOK		
TEMPLATE		
AREAS		
CHECKED		
NO.		

ORIGINAL SURVEYED	BY	DATE
SURVEY PLOTTED		
NOTE BOOK		
TEMPLATE		
AREAS		
CHECKED		
NO.		