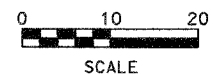
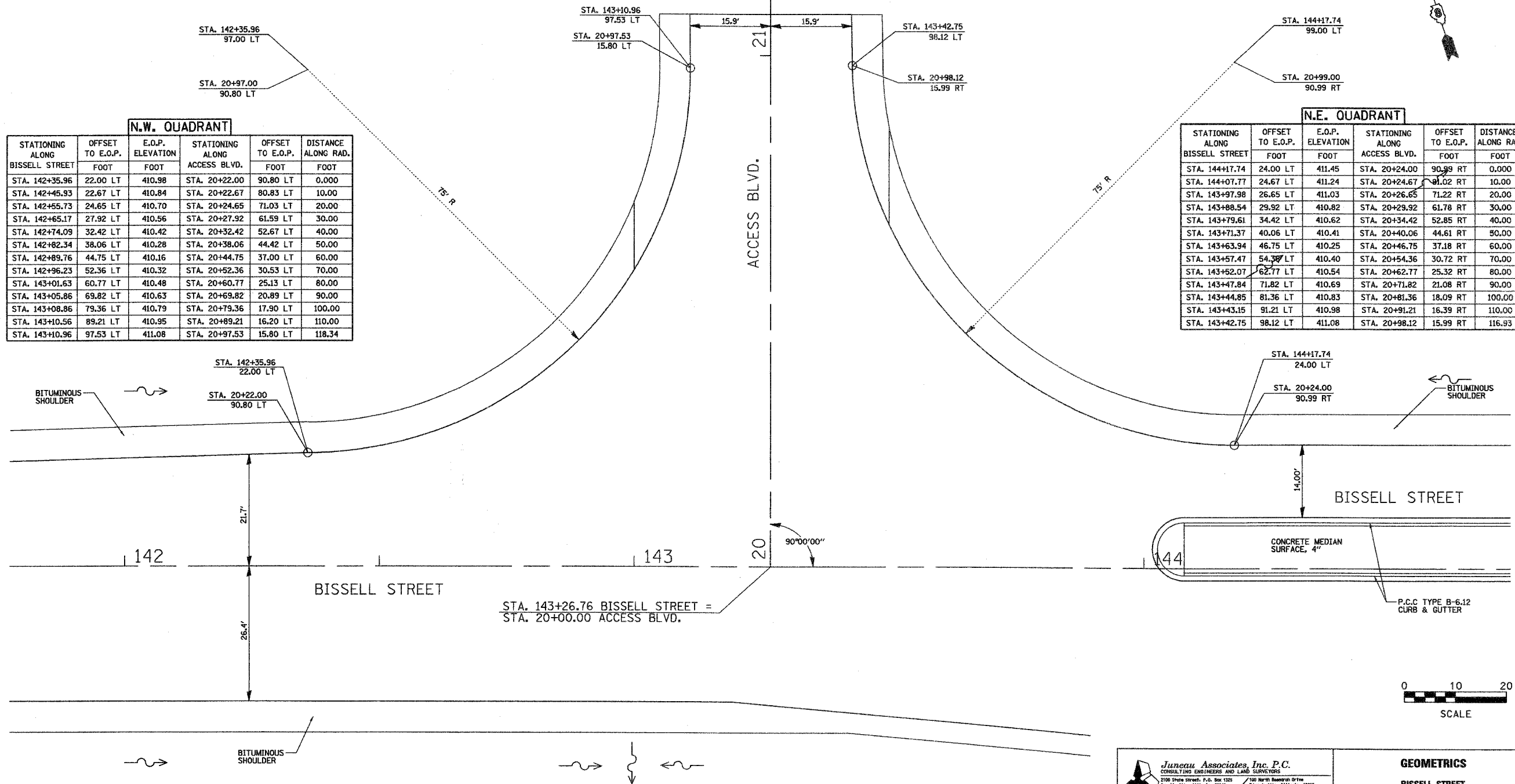


BY \_\_\_\_\_ DATE \_\_\_\_\_  
 SURVEYED \_\_\_\_\_  
 PLOTTED \_\_\_\_\_  
 NOTE BOOK \_\_\_\_\_  
 AREAS CHECKED \_\_\_\_\_  
 NO. \_\_\_\_\_

BY \_\_\_\_\_ DATE \_\_\_\_\_  
 ORIGINAL SURVEY \_\_\_\_\_  
 PLOTTED \_\_\_\_\_  
 NOTE BOOK \_\_\_\_\_  
 AREAS CHECKED \_\_\_\_\_  
 NO. \_\_\_\_\_

N.W. QUADRANT					
STATIONING ALONG BISSELL STREET	OFFSET TO E.O.P. FOOT	E.O.P. ELEVATION FOOT	STATIONING ALONG ACCESS BLVD.	OFFSET TO E.O.P. FOOT	DISTANCE ALONG RAD. FOOT
STA. 142+35.96	22.00 LT	410.98	STA. 20+22.00	90.80 LT	0.000
STA. 142+45.93	22.67 LT	410.84	STA. 20+22.67	80.83 LT	10.00
STA. 142+55.73	24.65 LT	410.70	STA. 20+24.65	71.03 LT	20.00
STA. 142+65.17	27.92 LT	410.56	STA. 20+27.92	61.59 LT	30.00
STA. 142+74.09	32.42 LT	410.42	STA. 20+32.42	52.67 LT	40.00
STA. 142+82.34	38.06 LT	410.28	STA. 20+38.06	44.42 LT	50.00
STA. 142+89.76	44.75 LT	410.16	STA. 20+44.75	37.00 LT	60.00
STA. 142+96.23	52.36 LT	410.32	STA. 20+52.36	30.53 LT	70.00
STA. 143+01.63	60.77 LT	410.48	STA. 20+60.77	25.13 LT	80.00
STA. 143+05.86	69.82 LT	410.63	STA. 20+69.82	20.89 LT	90.00
STA. 143+08.86	79.36 LT	410.79	STA. 20+79.36	17.90 LT	100.00
STA. 143+10.56	89.21 LT	410.95	STA. 20+89.21	16.20 LT	110.00
STA. 143+10.96	97.53 LT	411.08	STA. 20+97.53	15.80 LT	118.34

N.E. QUADRANT					
STATIONING ALONG BISSELL STREET	OFFSET TO E.O.P. FOOT	E.O.P. ELEVATION FOOT	STATIONING ALONG ACCESS BLVD.	OFFSET TO E.O.P. FOOT	DISTANCE ALONG RAD. FOOT
STA. 144+17.74	24.00 LT	411.45	STA. 20+24.00	90.99 RT	0.000
STA. 144+07.77	24.67 LT	411.24	STA. 20+24.67	81.02 RT	10.00
STA. 143+97.98	26.65 LT	411.03	STA. 20+26.65	71.22 RT	20.00
STA. 143+88.54	29.92 LT	410.82	STA. 20+29.92	61.78 RT	30.00
STA. 143+79.61	34.42 LT	410.62	STA. 20+34.42	52.85 RT	40.00
STA. 143+71.37	40.06 LT	410.41	STA. 20+40.06	44.61 RT	50.00
STA. 143+63.94	46.75 LT	410.25	STA. 20+46.75	37.18 RT	60.00
STA. 143+57.47	54.38 LT	410.40	STA. 20+54.36	30.72 RT	70.00
STA. 143+52.07	62.77 LT	410.54	STA. 20+62.77	25.32 RT	80.00
STA. 143+47.84	71.82 LT	410.69	STA. 20+71.82	21.08 RT	90.00
STA. 143+44.85	81.36 LT	410.83	STA. 20+81.36	18.09 RT	100.00
STA. 143+43.15	91.21 LT	410.98	STA. 20+91.21	16.39 RT	110.00
STA. 143+42.75	98.12 LT	411.08	STA. 20+98.12	15.99 RT	116.93



<b>Jumenu Associates Inc. P.C.</b> CONSULTING ENGINEERS AND LAND SURVEYORS <small>2100 Shore Street, P.O. Box 1325, Granite City, Illinois 62040          Phone: (618) 777-1400 / (618) 402-8835 Fax: (618) 402-8841          100 North Rockwood Drive, Edwardsville, Illinois 62025          Phone: (618) 668-0800 / (618) 659-0800 Fax: (618) 668-0911</small>		<b>GEOMETRICS</b> <b>BISSELL STREET</b> <b>MADISON, ILLINOIS</b> <b>SECTION No. 05-00001-00-WR</b>																								
<b>REVISIONS</b> <table border="1"> <thead> <tr> <th>NO.</th> <th>DATE</th> <th>BY</th> <th>REMARKS</th> </tr> </thead> <tbody> <tr><td> </td><td> </td><td> </td><td> </td></tr> <tr><td> </td><td> </td><td> </td><td> </td></tr> <tr><td> </td><td> </td><td> </td><td> </td></tr> </tbody> </table>		NO.	DATE	BY	REMARKS													SCALE: 1 Inch = 10 feet <table border="1"> <tr> <td>DSN. BY: BFK</td> <td>DATE: 1/19/07</td> <td rowspan="3">SHEET <b>57</b></td> </tr> <tr> <td>DWN. BY: RKR</td> <td>DATE: 1/19/07</td> </tr> <tr> <td>CHK'D: BFK</td> <td>DATE: 1/19/07</td> </tr> </table>		DSN. BY: BFK	DATE: 1/19/07	SHEET <b>57</b>	DWN. BY: RKR	DATE: 1/19/07	CHK'D: BFK	DATE: 1/19/07
NO.	DATE	BY	REMARKS																							
DSN. BY: BFK	DATE: 1/19/07	SHEET <b>57</b>																								
DWN. BY: RKR	DATE: 1/19/07																									
CHK'D: BFK	DATE: 1/19/07																									
DWG. NO. _____		JOB NO. E061300    DGN. NAME: GCO-02    OF 102 SHTS																								