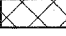


F.A.I.D. RTE.	SECTION	COUNTY	TOTAL SHEETS	SHEET NO.
9104 05-0001-00-WR	MADISON	ILLINOIS	102	66
FED. ROAD DIST. NO. ILLINOIS FED. AID PROJECT				

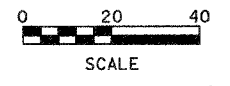
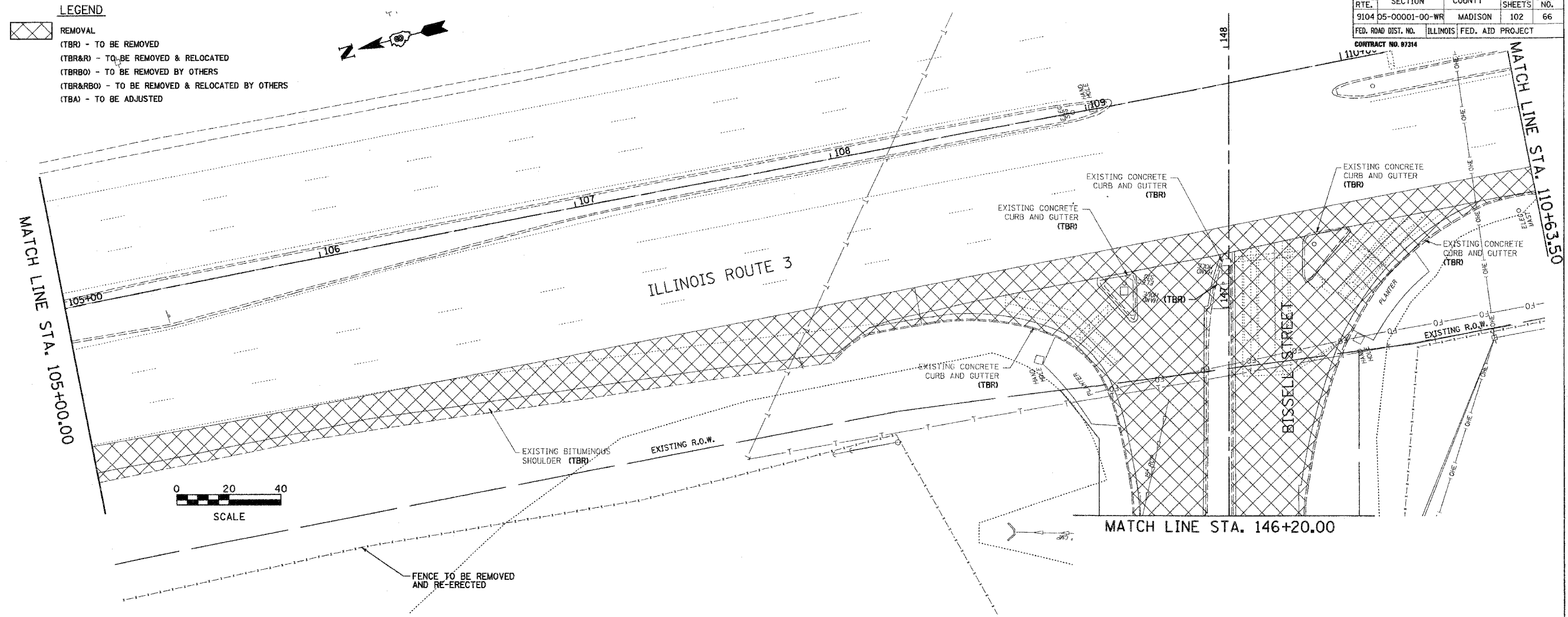
CONTRACT NO. 87314

LEGEND

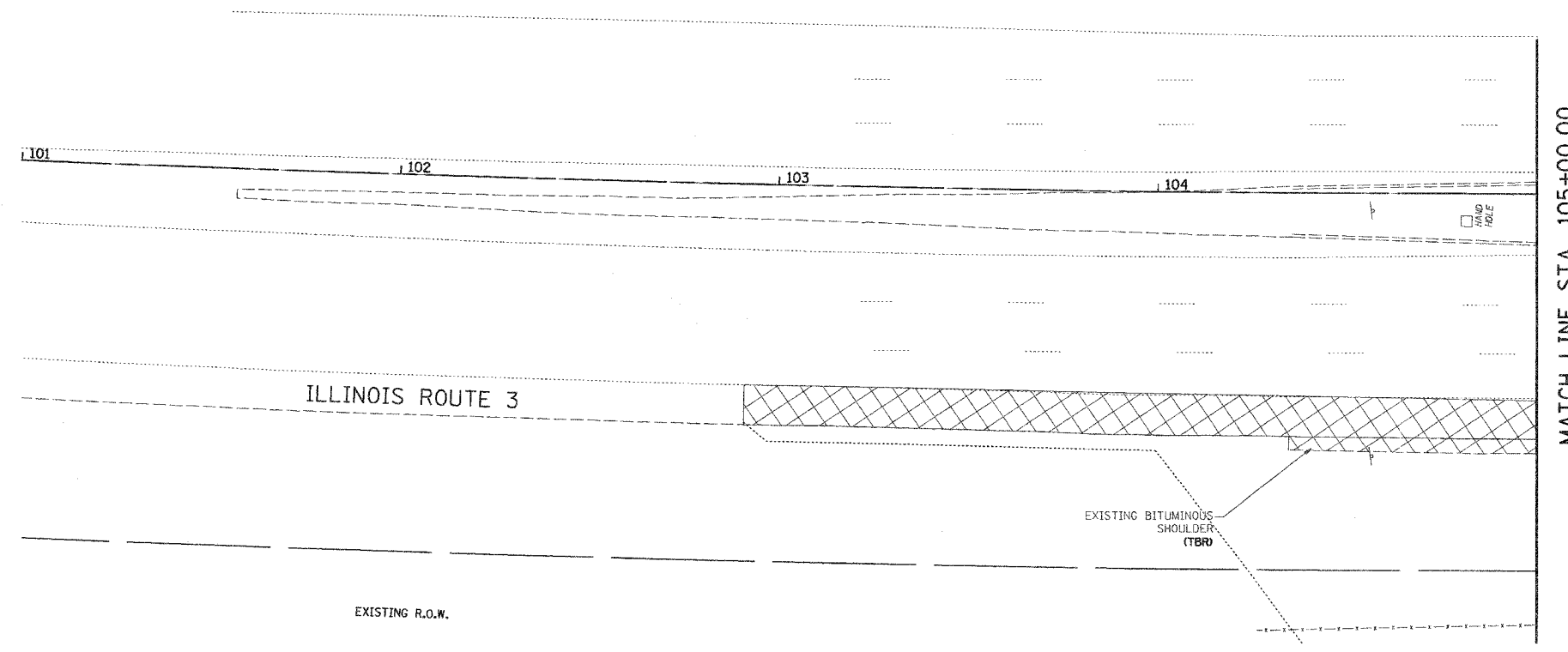
-  REMOVAL
- (TBR) - TO BE REMOVED
- (TBR&R) - TO BE REMOVED & RELOCATED
- (TBRBO) - TO BE REMOVED BY OTHERS
- (TBR&RBO) - TO BE REMOVED & RELOCATED BY OTHERS
- (TBA) - TO BE ADJUSTED



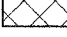
FINAL SURVEY	SURVEYED	DATE
NOTE BOOK	PLOTTED	BY
NO.	TEMPLATE	
	AREAS CHECKED	

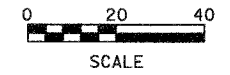


ORIGINAL SURVEY	SURVEYED	DATE
NOTE BOOK	PLOTTED	BY
NO.	TEMPLATE	
	AREAS CHECKED	



LEGEND

-  REMOVAL
- (TBR) - TO BE REMOVED
- (TBR&R) - TO BE REMOVED & RELOCATED
- (TBRBO) - TO BE REMOVED BY OTHERS
- (TBR&RBO) - TO BE REMOVED & RELOCATED BY OTHERS
- (TBA) - TO BE ADJUSTED



Juneau Associates, Inc. P.C.
 CONSULTING ENGINEERS AND LAND SURVEYORS
 2100 State Street, P.O. Box 1325
 Granite City, Illinois 62040
 Phone: (618) 937-4600 / (618) 937-5035
 Fax: (618) 937-0541

REMOVAL
BISSELL STREET
MADISON, ILLINOIS
SECTION No. 05-0001-00-WR

REVISIONS			
NO.	DATE	BY	REMARKS

SCALE 1 inch = 20 feet	
DSN. BY: BFK	DATE: 1/19/07
DWN. BY: JDH	DATE: 1/19/07
CHKD: BFK	DATE: 1/19/07
JOB NO. E061300	DGN. NAME: rem04
SHEET 66 OF 102 SHTS	