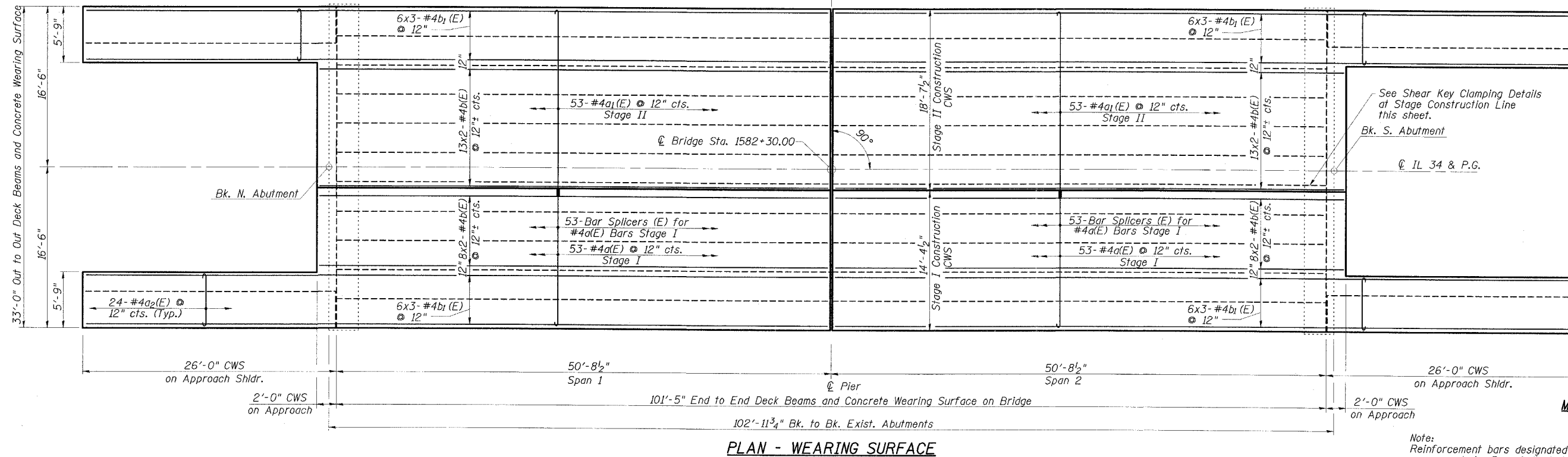


STATE OF ILLINOIS
DEPARTMENT OF TRANSPORTATION

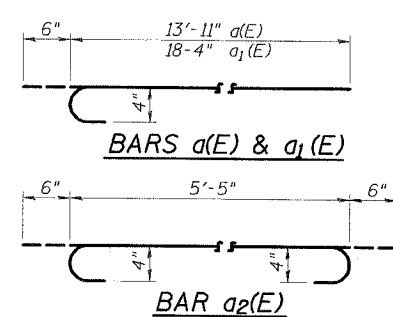
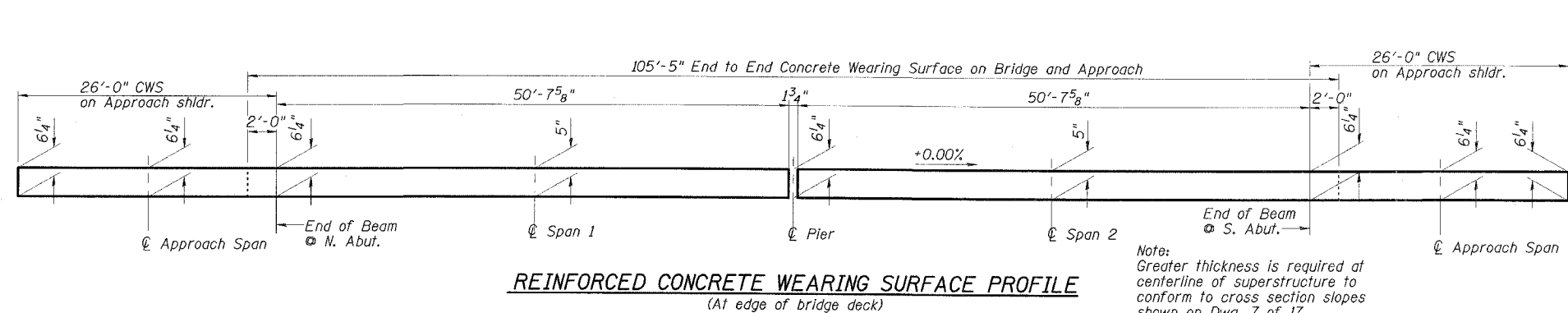
ROUTE NO.	SECTION	COUNTY	STATION	SHEET NO.
FAP 869	*	SALINE	44	17
FED. ROAD DIST. NO.		ILLINOIS	FED. AID PROJECT	
98996			*(105A)BR-1	



See Shear Key Clamping Details at Stage Construction Line this sheet.
Bk. S. Abutment
IL 34 & P.G.

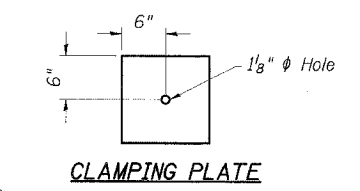
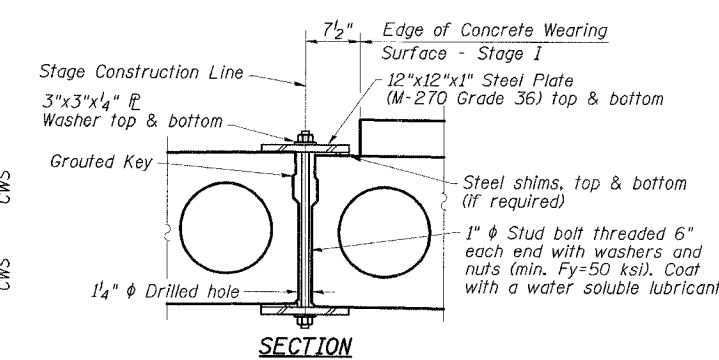
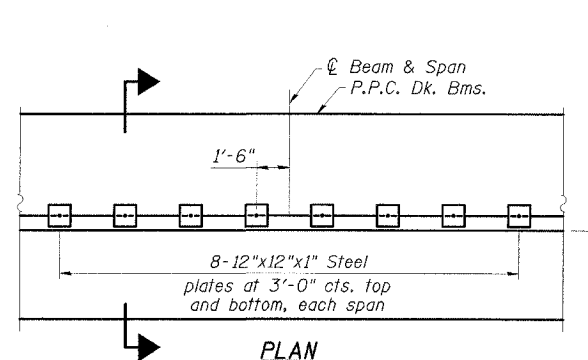
MIN. BAR LAP
#4 bar = 1'-8"

Note:
Reinforcement bars designated (E) shall be epoxy coated. Bars indicated thus 13x2-#4 etc. indicates 13 lines of bars with 2 lengths per line. For remainder of superstructure details, see drawings 7 and 9 of 17.



CONCRETE WEARING SURFACE
BILL OF MATERIAL

Bar	No.	Size	Length	Shape	
a(E)	106	#4	14'-5"	U	
a1(E)	106	#4	18'-10"	U	
a2(E)	96	#4	6'-5"	U	
b(E)	84	#4	27'-0"	—	
b1(E)	72	#4	26'-8"	—	
Reinforcement Bars, Epoxy Coated				Pound	5570
Concrete Wearing Surface, 5"				Sq. Yd.	448
Bridge Deck Grooving				Sq. Yd.	448
Bar Splicers				Each	106
Protective Coat				Sq. Yd.	448



Notes:
See Stage Construction Details for traffic lanes. Cost is included with Precast Prestressed Concrete Deck Beams.

ESCA
CONSULTANTS, INC.
DESIGNED BY: RDP 02/07
DRAWN BY: DWH 02/07
CHECKED BY: JMS/MTD 02/07
APPROVED BY: RDP 04/07

SUPERSTRUCTURE
IL 34 OVER BANKSTON CREEK
FAP ROUTE 869 - SECTION (105A)BR-1
SALINE COUNTY
STATION 1582+30.00
STRUCTURE NO. 083-0040