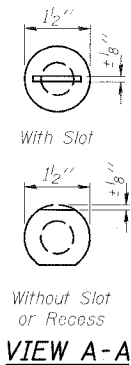
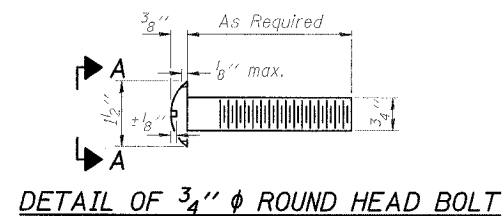


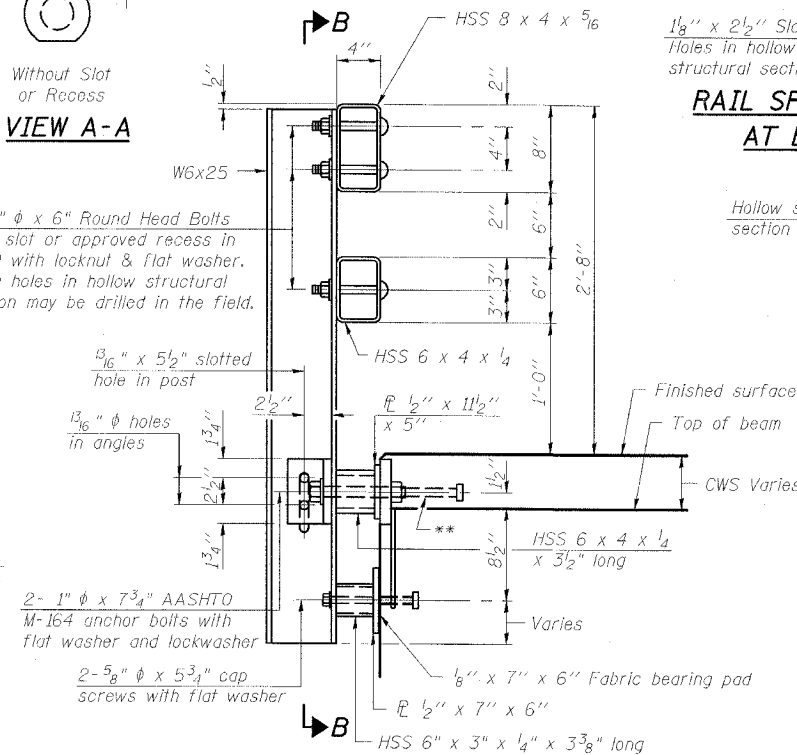
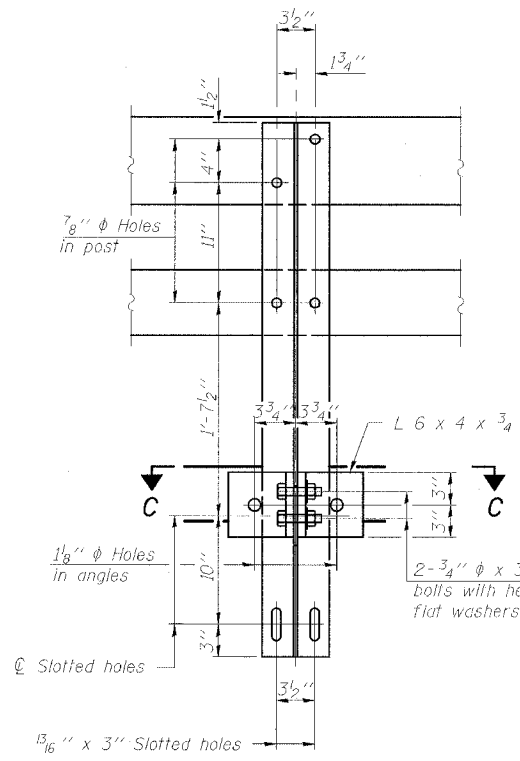
STATE OF ILLINOIS
DEPARTMENT OF TRANSPORTATION

ROUTE NO.	SECTION	LOCALITY	TOTAL SHEETS	SHEET NO.
FAP 869	*	SALINE	44	21
FED. ROAD DIST. NO.	ILLINOIS	PAID-AD PROJECT		
98996				(105A)BR-1

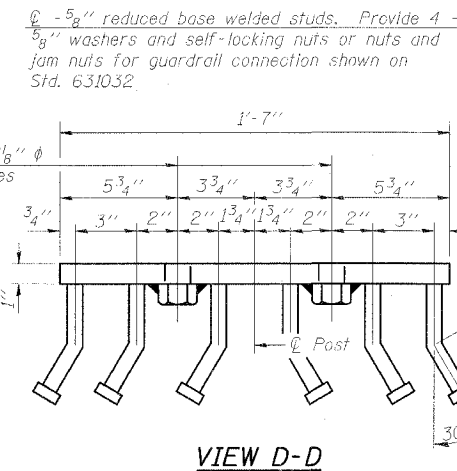
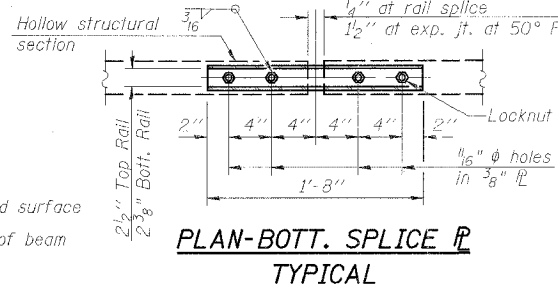
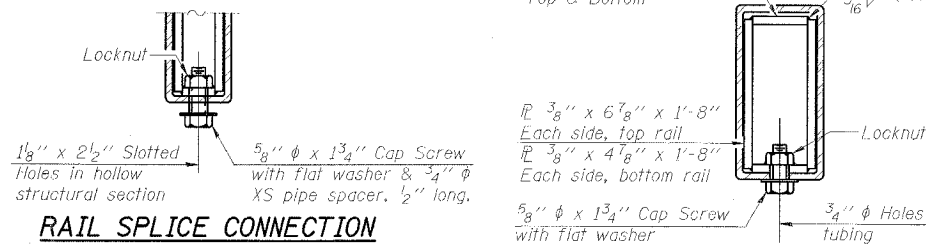
SHEET NO. 10
17 SHEETS



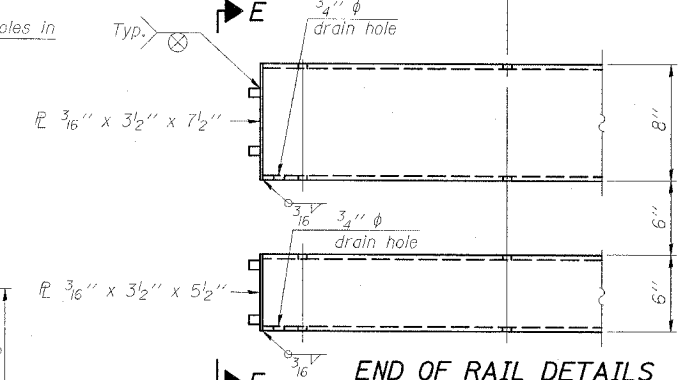
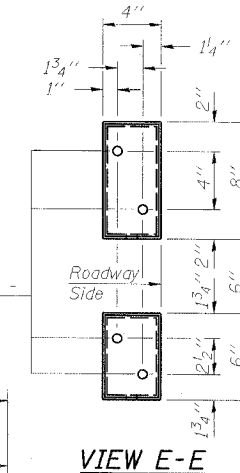
4 - 3/4" ϕ x 6" Round Head Bolts (With slot or approved recess in head) with locknut & flat washer. 7/8" ϕ holes in hollow structural section may be drilled in the field.



RAIL SPLICE CONNECTION AT EXPANSION JT.



SECTION AT RAIL SPLICE



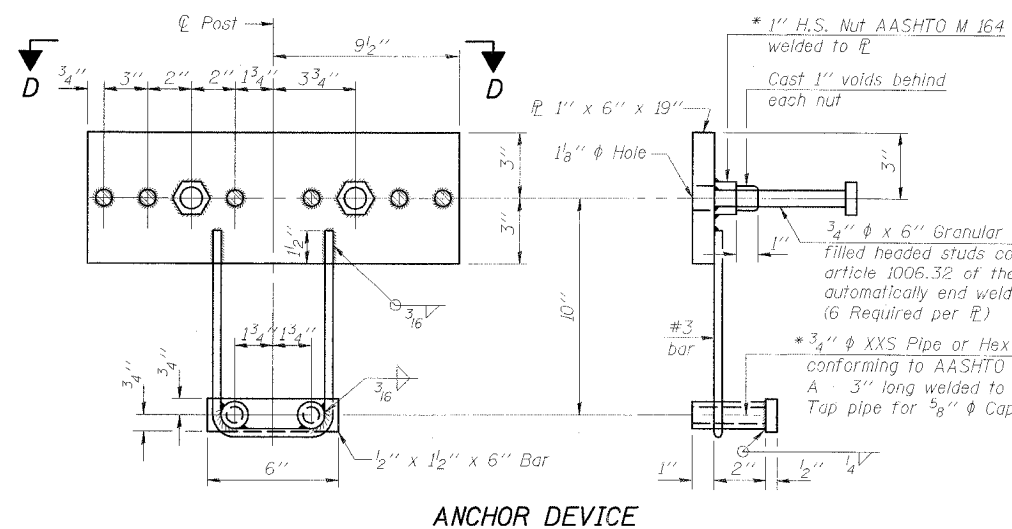
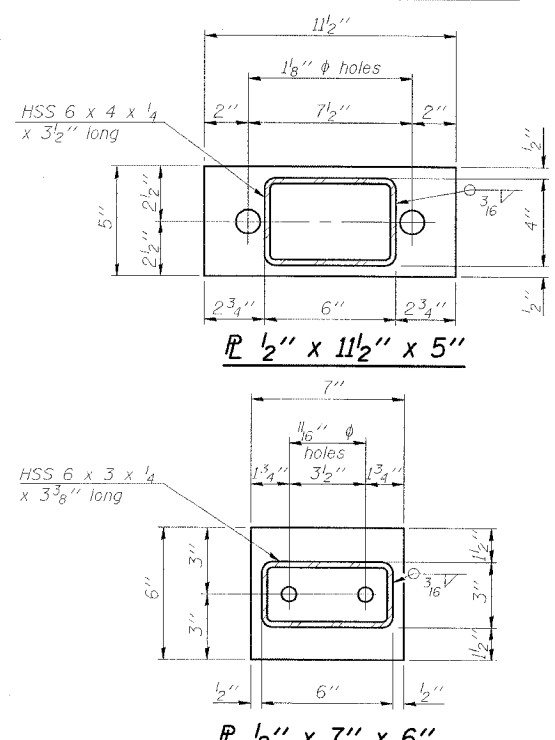
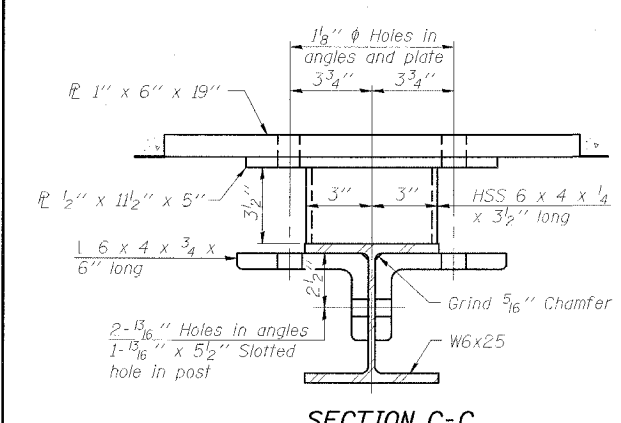
Notes:

All field drilled holes shall be coated with an approved zinc rich paint before erection.

For multi-span bridges, sufficient 1/4" x 6" x 1'-2" galvanized steel shims shall be provided to align rail between adjacent spans. Cost included with Steel Railing, Type SM.

Steel rail elements shall be galvanized according to Article 509.05 of the Standard Specifications.

** The studs of the anchor devices shall be placed below the top reinforcement bars and the outermost longitudinal reinforcement bar shall be placed directly above the studs of the rail post anchor device.



BILL OF MATERIAL

Item	Unit	Quantity
Steel Railing, Type SM	Foot	307

STEEL RAILING, TYPE SM WITH CONCRETE WEARING SURFACE IL 34 OVER BANKSTON CREEK FAP ROUTE 869 - SECTION (105A)BR-1 SALINE COUNTY STATION 1582+30.00 STRUCTURE NO. 083-0040

ESCA
CONSULTANTS, INC.

DESIGNED BY: RDP 02/07
DRAWN BY: DWH 02/07
CHECKED BY: JMS/MTD 02/07
APPROVED BY: RDP 04/07

(6'-3" Maximum Post Spacing) (5" minimum to 7 1/8" maximum CWS thickness)

* Threaded areas shall be plugged or blocked off during casting of beam. Galvanized after fabrication.