

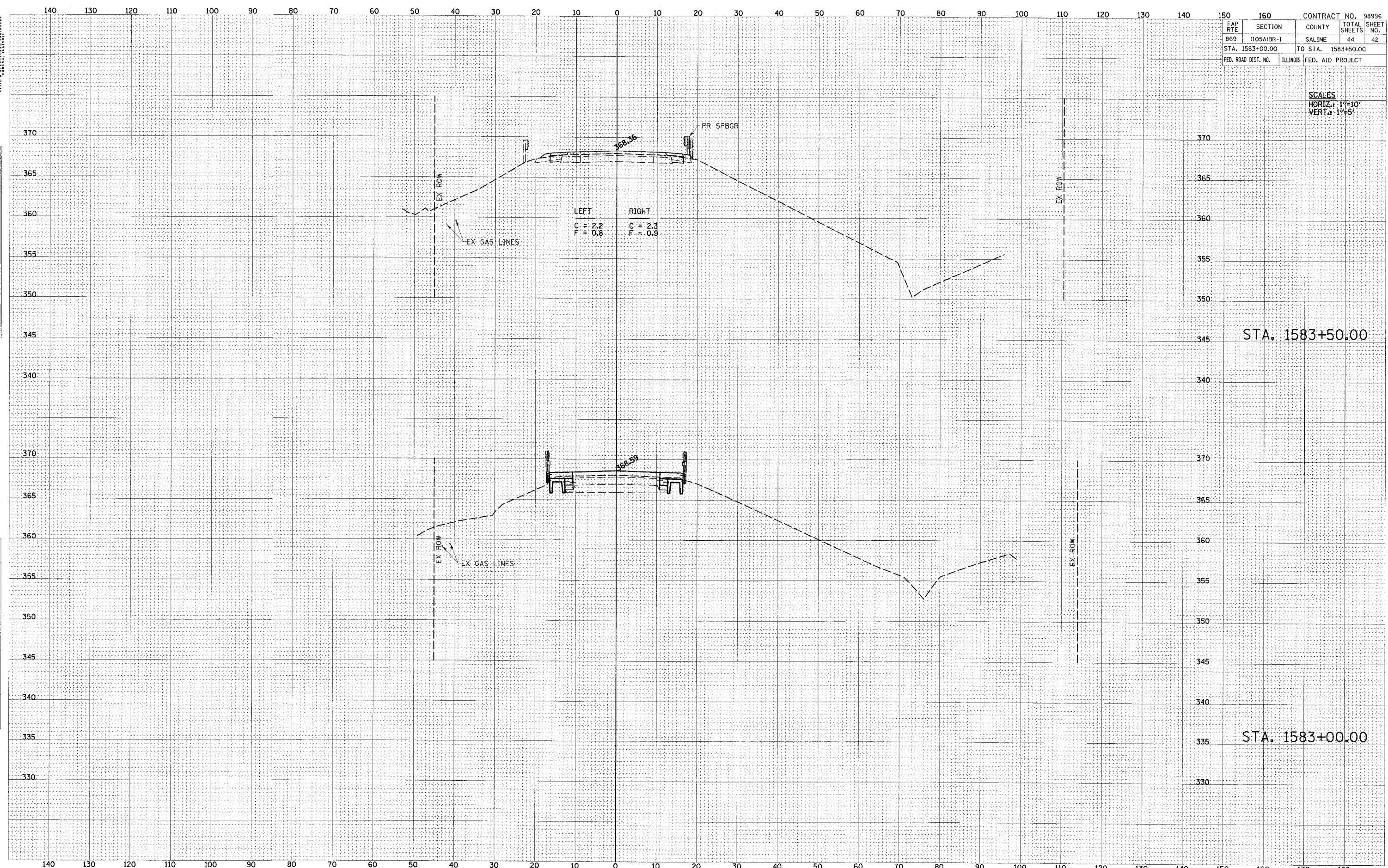


FINAL	SURVEYED	BY	DATE
CHECKED	PLOTTED		
NOTED	BOOK		
NO.	AREAS CHECKED		

ORIGINAL	SURVEYED	BY	DATE
CHECKED	PLOTTED		
NOTED	BOOK		
NO.	AREAS CHECKED		

FAP RTE		CONTRACT NO. 98996	
869	SECTION (105A)BR-1	COUNTY SALINE	TOTAL SHEETS 44
STA. 1583+00.00		TO STA. 1583+50.00	
FED. ROAD DIST. NO.		ILLINOIS	FED. AID PROJECT

SCALES
HORIZ. 1"=10'
VERT. 1"=5'



STA. 1583+50.00

STA. 1583+00.00