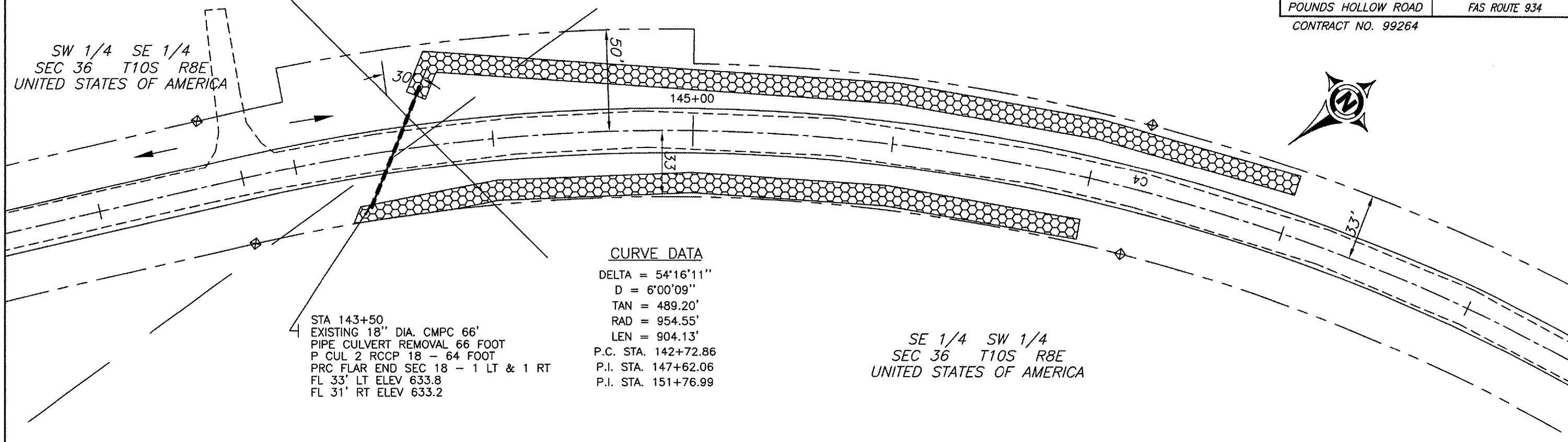


ROUTE	SECTION	COUNTY	TOTAL SHEETS	SHEET NUMBER
CH13	04-00069-00-RS	GALLATIN	25	12
POUNDS HOLLOW ROAD		FAS ROUTE 934		
CONTRACT NO. 99264				

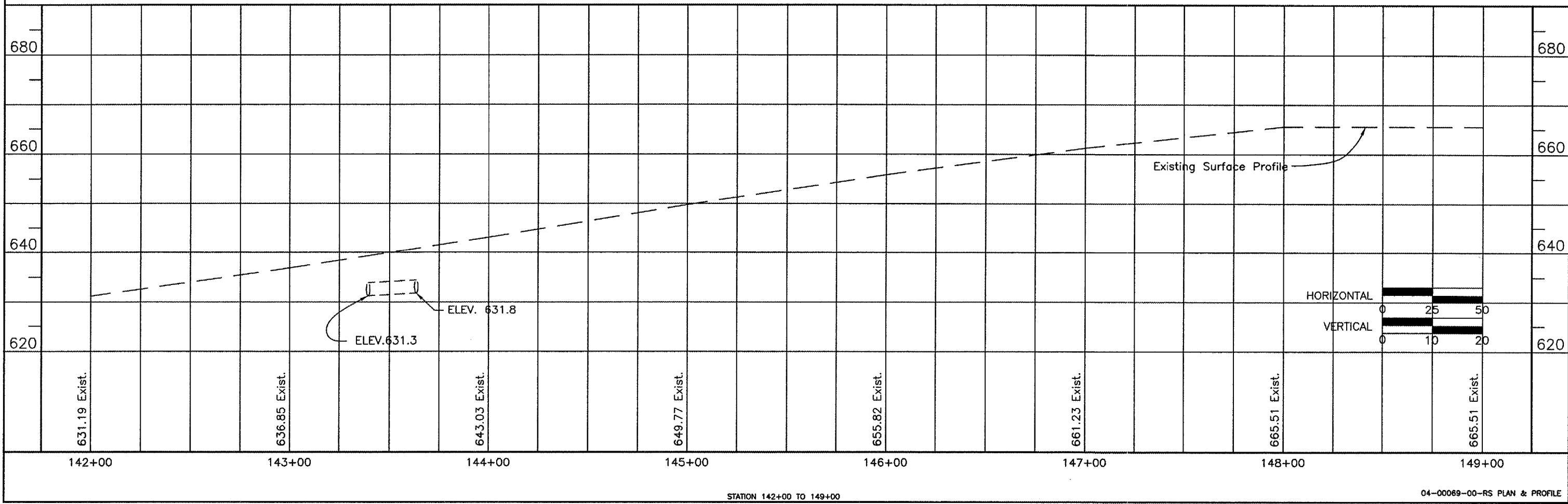
SW 1/4 SE 1/4  
SEC 36 T10S R8E  
UNITED STATES OF AMERICA



STA 143+50  
EXISTING 18" DIA. CMPC 66'  
PIPE CULVERT REMOVAL 66 FOOT  
P CUL 2 RCCP 18 - 64 FOOT  
PRC FLAR END SEC 18 - 1 LT & 1 RT  
FL 33' LT ELEV 633.8  
FL 31' RT ELEV 633.2

**CURVE DATA**  
 DELTA = 54°16'11"  
 D = 6°00'09"  
 TAN = 489.20'  
 RAD = 954.55'  
 LEN = 904.13'  
 P.C. STA. 142+72.86  
 P.I. STA. 147+62.06  
 P.I. STA. 151+76.99

SE 1/4 SW 1/4  
SEC 36 T10S R8E  
UNITED STATES OF AMERICA



STATION 142+00 TO 149+00