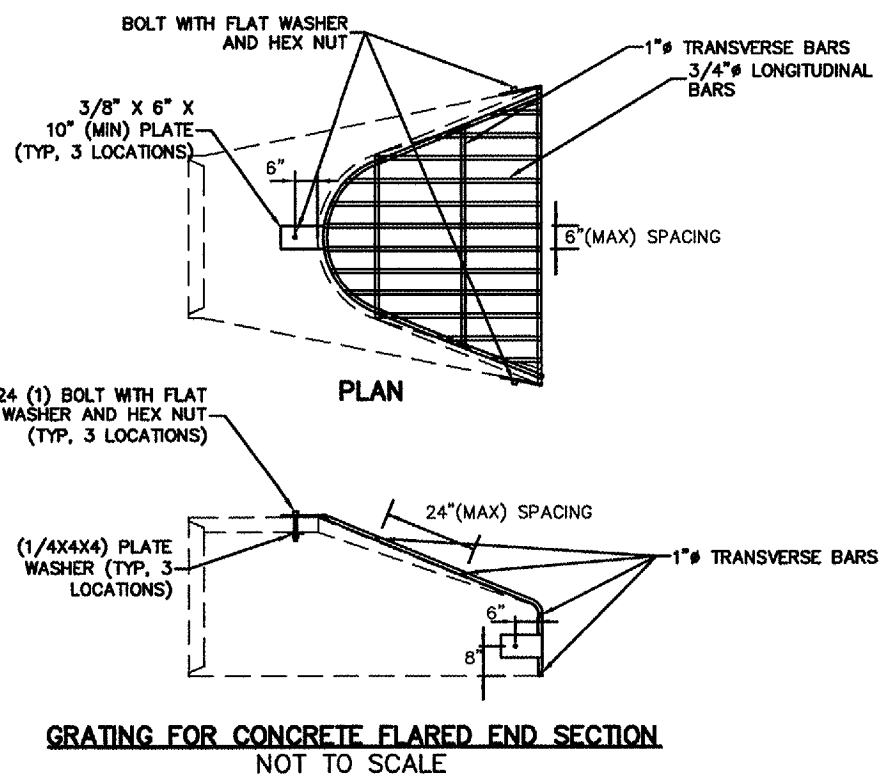
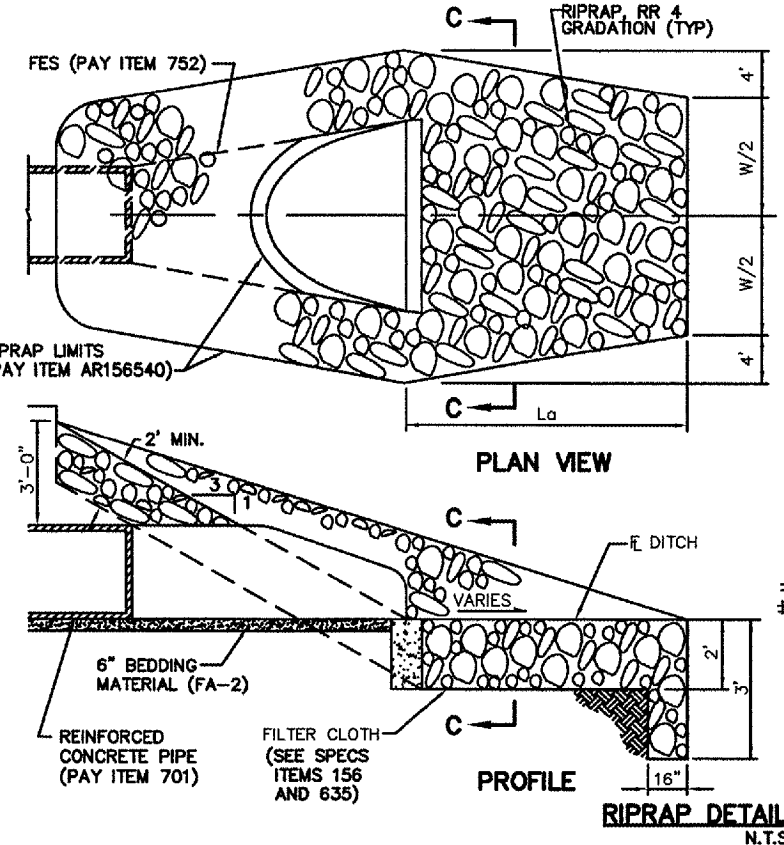


- NOTES:**
1. PRECAST CONCRETE FLARED END SECTIONS SHALL CONFORM TO THE APPLICABLE REQUIREMENTS OF AASHTO M-170 CLASS III, WALL B REINFORCED CONCRETE PIPE.
  2. PRECAST CONCRETE FLARED END SECTION FOR PIPE DIAMETER REQUIRED SHALL BE AS INDICATED ON DETAIL PLAN FOR EACH INDIVIDUAL INSTALLATION.
  3. CAST-IN-PLACE END BLOCK SHALL BE PLACED PRIOR TO THE INSTALLATION OF THE FLARED END SECTION. THE END BLOCK SHALL BE BACKFILLED IN ACCORDANCE WITH ITEM 752 OF THE STANDARD SPECIFICATIONS FOR CONSTRUCTION OF AIRPORTS WITH COST BEING INCIDENTAL TO THE END SECTION.

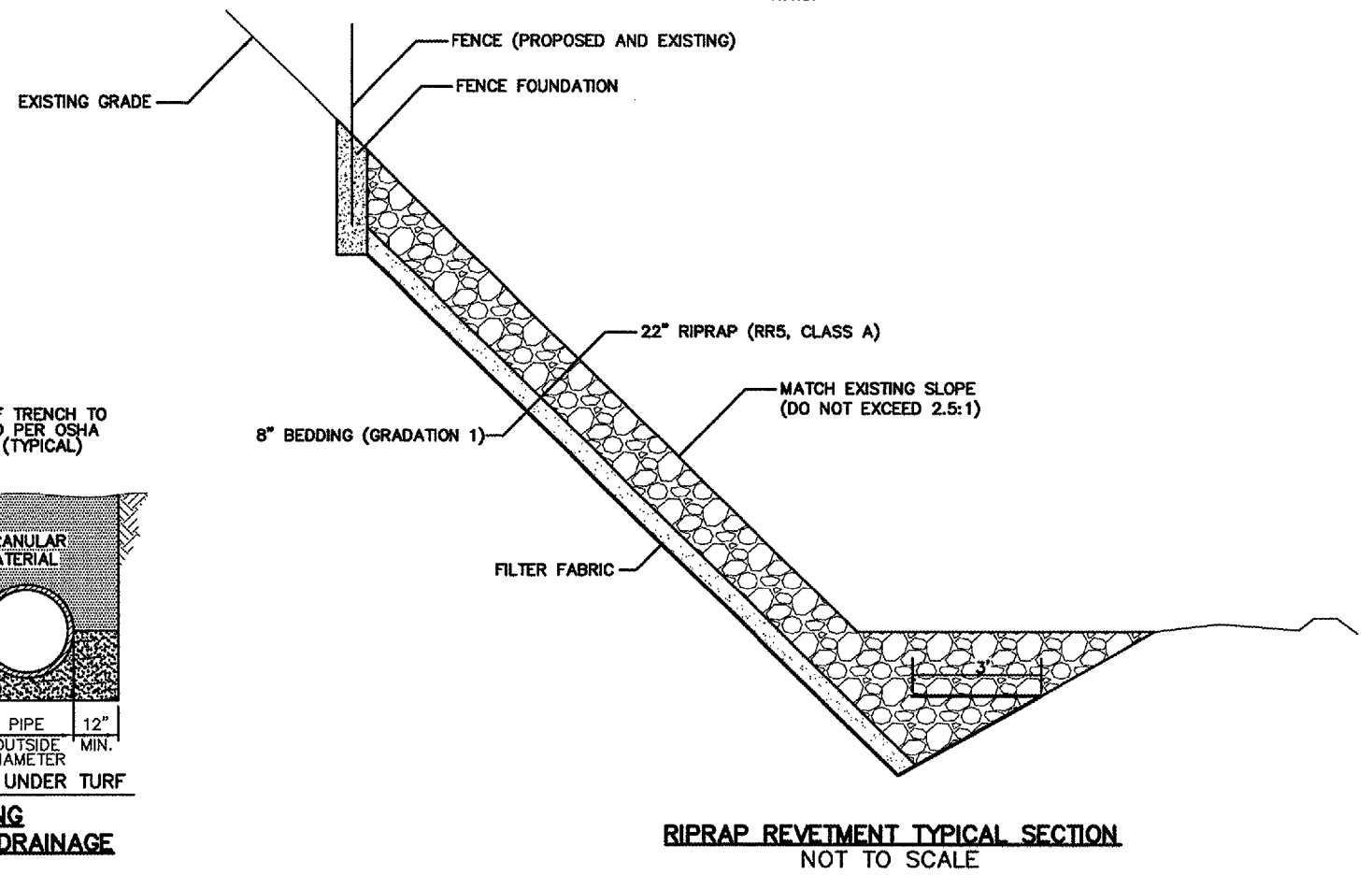
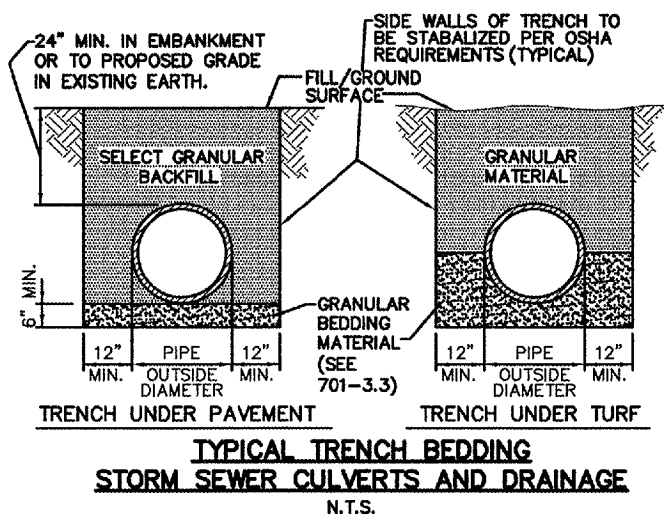
PIPE DIA.	APPROX. WT.(LBS.)	WALL	A	B	C	D	E	G	R	SLOPE
36"	4100	4"	15"	5'-3"	34-3/4"	8'-1 3/4"	6'-0"	4"	20"	2.5:1

\* RADIUS AS FURNISHED BY MANUFACTURER

RIPRAP APRON SIZE		
PIPE DIA.	W	La
36"	10'	18'



- NOTES:**
- GRATING DETAIL SHOWN IS INTENDED FOR USE WITH 36" PRECAST REINFORCED CONCRETE FLARED END SECTION SHOWN. COORDINATE WITH PRECAST FES MANF. AS NECESSARY. ALL MATERIALS TO BE GALVANIZE. ALL MATERIALS TO MEET SAME STANDARDS AS IDOT STANDARD 542311, GRATING FOR CONCRETE FLARED END SECTION.



REV.	DATE	BY	APPR.	DESCRIPTION	PLOT FILE	REV.	DATE	BY	APPR.	DESCRIPTION	PLOT FILE

DESIGNED BY: DJT
DRAWN BY: DJT
CHECKED BY: TNG
DATE: 06/08/07

**MidAmerica**  
ST. LOUIS AIRPORT

**EarthTech**  
A Tyco International Ltd. Company

**TWY K EROSION STABILIZATION**

9768 Airport Blvd, Box 3  
Mascoutah, IL 62258  
PH 618-624-2628  
FAX 618-566-5324



DWG. FILE NAME  
95073-C-09

SHEET NO.  
9

DETAILS