

LETTING DATE: 08-03-07
 ITEM NUMBER: 3A

ST. CLAIR COUNTY, ILLINOIS

CONSTRUCTION PLANS

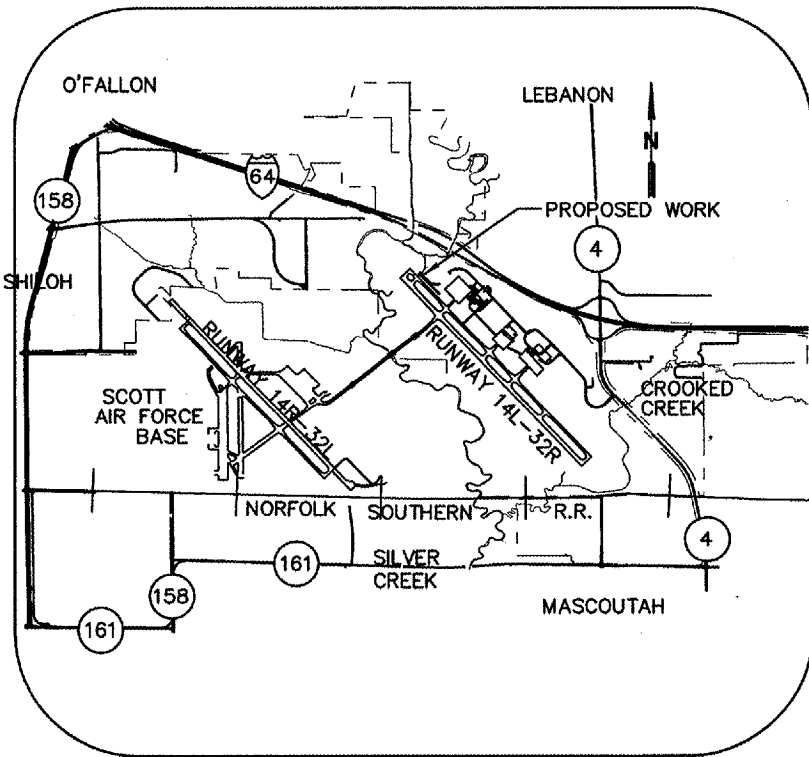
FOR

TOTAL SHEETS
11
 CONTRACT NO.
SC064



TWY K EROSION STABILIZATION

CALL J.U.L.I.E. BEFORE EXCAVATING
 1-800-892-0123
 SAINT CLAIR COUNTY
 MASCOUTAH TOWNSHIP
 TOWNSHIP: 1 NORTH
 RANGE: 7 WEST
 SECTION(S): 1, 12

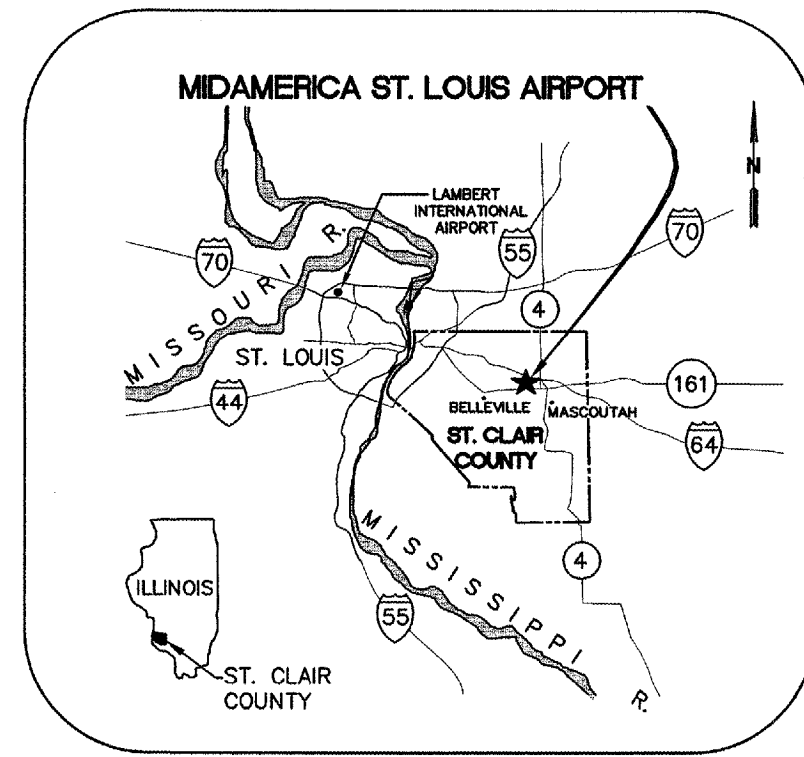


VICINITY MAP

JUNE 8, 2007



9768 Airport Blvd, Box 3
 Mascoutah, Illinois 62258
 PH 618-624-2628
 FAX 618-566-5324



LOCATION MAP



EARTH TECH, INC.

SUBMITTED: [Signature]
 DATE: 6/08/07

**ST CLAIR COUNTY
 PUBLIC BUILDING COMMISSION
 AIRPORT SPONSOR**

APPROVED: [Signature]
 DATE: 6/1/07

IDOT PROJECT NO. BLV-3668
 AIP PROJECT NO. 3-17-0146-xx
 EARTHTECH NO. 95073

SUMMARY OF QUANTITIES				
ITEM NO.	ITEM	UNIT	BID QUANTITY	RECORD QUANTITY
AR150540	HAUL ROUTE	L.S.	1.00	
AR156510	SILT FENCE	L.F.	200.00	
AR156511	DITCH CHECKS	EACH	4.00	
AR156531	EROSION CONTROL BLANKET	S.Y.	3,562.00	
AR156544	RIPRAP-GRADATION NO. 4	S.Y.	41.00	
AR156545	RIPRAP-GRADATION NO. 5	S.Y.	783.00	
AR162508	CLASS E FENCE 8'	L.F.	216.00	
AR162604	CLASS E GATE - 4'	EACH	1.00	
AR162620	CLASS E GATE - 20'	EACH	2.00	
AR162900	REMOVE CLASS E FENCE	L.F.	311.00	
AR162910	REMOVE CLASS E GATE	EACH	1.00	
AR701436	36" RCP, CLASS III	L.F.	36.00	
AR752436	PRECAST REINFORCED CONC. FES 36"	EACH	2.00	
AR752536	GRATING FOR CONC. FES 36"	EACH	2.00	
AR801853	STONE CHECK DAM	C.Y.	116.00	
AR801854	DEWATERING	L.S.	1.00	
AR801855	STABILIZE WLDLIFE FENCE POST	EACH	10.00	
AR801856	REMOVE DEBRIS	L.S.	1.00	
AR801857	REGRADE DITCH	L.S.	1.00	
AR801858	GROUT EXIST RIPRAP	S.Y.	22.00	
AR901510	SEEDING	ACRE	0.80	

INDEX TO SHEETS	
SHEET NO.	DESCRIPTION
1	COVER SHEET
2	INDEX TO SHEETS, QUANTITIES, ABBREVIATIONS, AND LEGENDS
3	CONSTRUCTION SAFETY PLAN
4	SWPPP
5	SWPPP (NOTES)
6	SITE PLAN
7	DETAILED SITE PLAN
8	DITCH PLAN AND PROFILE
9	DETAILS
10	FENCE DETAILS
11	TWY K CROSS-SECTIONS STA 103+50 TO 106+00

LEGEND		
EXISTING	DESCRIPTION	PROPOSED
	FIRE HYDRANT AND VALVE	
	STRUCTURE	
	STORM CULVERT WITH FLARED END SECTION	
	STORM SEWER	
	SUBDRAIN	
	EXISTING GLYCOL PIPE	
	EXISTING FORCE MAIN	
	UTILITY POLE	
	SOIL BORING	
	TEST PIT	
	WATER LINE	
	GAS LINE	
	SANITARY SEWER LINE	
	FENCE	
	CENTERLINE	
	SHOULDER	
	CONTOUR	
	SIGN	
	RIPRAP	
	COMMUNICATIONS MH	
	ELECTRICAL MH	
	MANHOLE	
	VALVE	
	JUNCTION BOX	
	LIGHT	
	CONSTRUCTION LIMITS	

ABBREVIATIONS	
AASHTO	= AMERICAN ASSOCIATION OF STATE HIGHWAY TRANSPORTATION OFFICIALS
AC	= ADVISORY CIRCULAR
APPROX	= APPROXIMATE
ARFF	= AIRPORT RESCUE AND FIREFIGHTING FACILITY
ATCT	= AIR TRAFFIC CONTROL TOWER
BLDG	= BUILDING
CL, CL	= CENTERLINE
C.O.	= CLEAN OUT
CP	= CONNECTION POINT
CY	= CUBIC YARD
DIA	= DIAMETER
DWG	= DRAWING
E	= EAST
EA	= EACH
EL, ELEV	= ELEVATION
ELEC	= ELECTRIC
EXIST	= EXISTING
EXT	= EXTENSION
Ø	= DIAMETER
FAA	= FEDERAL AVIATION ADMINISTRATION
FAR	= FEDERAL AVIATION REGULATION
FES	= FLARED END SECTION
FL, E	= FLOWLINE
GRS	= GALVANIZED RIGID STEEL
HP	= HIGH POINT
I	= INTERSTATE
IDOT	= ILLINOIS DEPARTMENT OF TRANSPORTATION
INV	= INVERT
L	= LENGTH
LAT	= LATITUDE
LBS	= POUNDS
LF	= LINEAR FEET
LONG	= LONGITUDE
LP	= LOW POINT
LT	= LEFT
MAINT	= MAINTENANCE
MAX	= MAXIMUM
MH	= MANHOLE
MIN	= MINIMUM
MSDS	= MATERIAL SAFETY DATA SHEETS
N	= NORTH
NO	= NUMBER
NTS	= NOT TO SCALE
OD	= OUTSIDE DIAMETER
OL	= OUTLET
OSHA	= OCCUPATIONAL SAFETY AND HEALTH ADMINISTRATION
PAPI	= PRECISION APPROACH PATH INDICATOR
PROP	= PROPOSED
PVC	= POLYVINYL CHLORIDE, POINT OF VERTICAL CURVATURE
R	= RADIUS
RE	= RESIDENT ENGINEER
REL	= RELOCATE
REV	= REVISION
RMV	= REMOVE
RR	= RAILROAD
RT	= RIGHT
RVR	= RUNWAY VISUAL RANGE
SAN	= SANITARY
SF	= SQUARE FEET
SPA	= SPACING
SPECS	= SPECIFICATIONS
STA	= STATION
STD	= STANDARD
SY	= SQUARE YARDS
T/W	= TAXIWAY
TP	= TEST PIT
TYP	= TYPICAL
UE	= UNCLASSIFIED EXCAVATION
UIP	= USE IN PLACE
WT	= WEIGHT

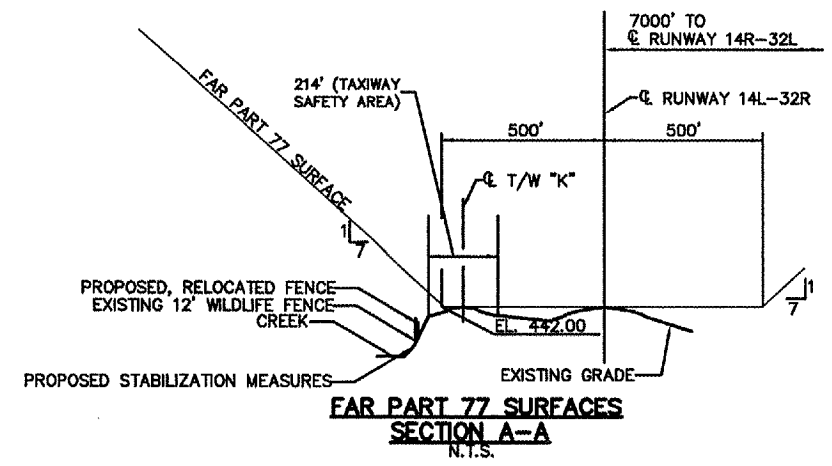
GENERAL NOTES:

- UNDERGROUND FACILITIES, STRUCTURES AND UTILITIES HAVE BEEN PLOTTED FROM AVAILABLE SURVEYS AND RECORDS; AND, THEREFORE, THEIR LOCATIONS MUST BE CONSIDERED APPROXIMATE ONLY. IT IS POSSIBLE THERE MAY BE OTHERS, THE EXISTENCE OF WHICH IS PRESENTLY NOT KNOWN OR SHOWN. IT IS THE CONTRACTOR'S RESPONSIBILITY TO DETERMINE THEIR EXISTENCE AND EXACT LOCATION AND TO AVOID DAMAGE THERETO.
- CALCULATED QUANTITIES ARE BASED ON DESIGN CONDITIONS. ACTUAL CONSTRUCTION QUANTITIES WILL BE MEASURED USING THE METHODS DEPICTED IN THE SPECIFICATIONS.

DESIGNED BY: DJT		TWY K EROSION STABILIZATION		9768 Airport Blvd, Box 3 Mascoutah, IL 62258 PH 618-624-2628 FAX 618-566-5324		INDEX TO SHEETS, QUANTITIES, ABBREVIATIONS, AND LEGENDS	DWG. FILE NAME 95073-C-02
DRAWN BY: DJT							SHEET NO. 2
CHECKED BY: TNG							
REV. DATE BY APPR. DESCRIPTION PLOT FILE	REV. DATE BY APPR. DESCRIPTION PLOT FILE	DATE: 06/08/07					

NOTES:

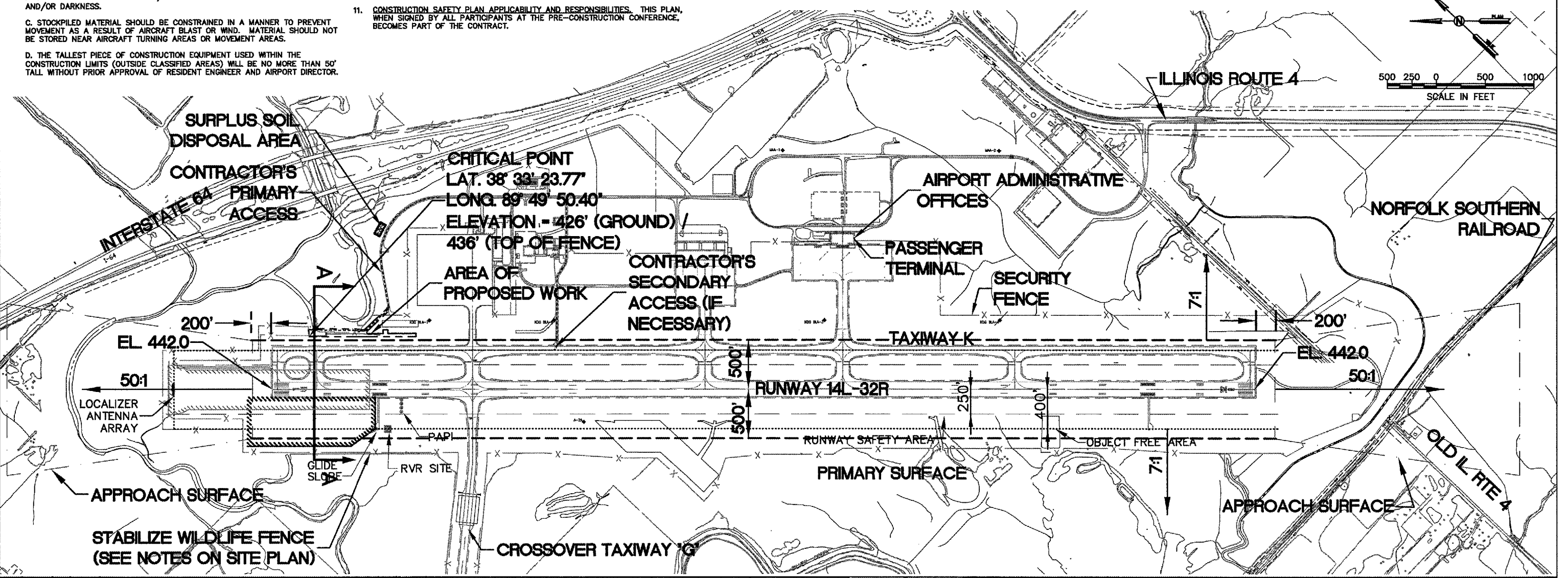
- GENERAL OPERATIONAL SAFETY SHALL BE GOVERNED BY FAA AC 150/5370-2E.** CONTRACTOR FACILITIES/EQUIPMENT SHALL NOT PENETRATE FAR PART 77 SURFACES (SEE SECTION A-A).
- CONSTRUCTION ACTIVITIES IN CLASSIFIED AREA.** CLASSIFIED AREAS ARE ALL AREAS WITHIN 200 FEET AND 107 FEET OF RUNWAY AND TAXIWAY CENTERLINES, RESPECTIVELY. NO CONSTRUCTION ACTIVITIES SHALL OCCUR WITHIN CLASSIFIED AREAS OR AREAS BOUNDED BY CLASSIFIED AREAS OF OPEN RUNWAYS/TAXIWAYS, EXCEPT AS PERMITTED BY THE AIRPORT OPERATIONS MANAGER AND THE RESIDENT ENGINEER. TEMPORARY RUNWAY/TAXIWAY DEACTIVATION, PREDICATED ON WIND CONDITIONS, WILL BE ACCOMPLISHED BY ATCT CONTROL PROCEDURES; REACTIVATION WILL OCCUR ON SHORT NOTICE WHEREUPON THE CONTRACTOR WILL VACATE SUCH CLASSIFIED AREAS AND AREAS BOUNDED THEREBY. VACATING SHALL INCLUDE REMOVAL OF ALL CONSTRUCTION EQUIPMENT, MATERIALS, WORKERS AND THE COVERING OF ALL OPEN MANHOLES. MOST CONSTRUCTION WITHIN CLASSIFIED AREAS WILL OCCUR ONLY WHILE TAXIWAY "K" IS CLOSED.
- CONSTRUCTION IN UNCLASSIFIED AREAS.** UNCLASSIFIED AREAS ARE ALL AREAS NOT LOCATED IN CLASSIFIED AREAS. UNRESTRICTED CONSTRUCTION WILL BE PERMITTED IN UNCLASSIFIED AREAS EXCEPT AS REQUIRED HEREIN, IN THE SPECIFICATIONS, AND AS ESTABLISHED IN THE PRE-CONSTRUCTION CONFERENCE.
- CONSTRUCTION IN NAVIGATIONAL AID CRITICAL AREAS.** NO CONSTRUCTION ACTIVITIES ARE SCHEDULED NEAR ANY ILS, GLIDE SLOPE OR LOCALIZER CRITICAL AREAS. SHOULD CONSTRUCTION ACTIVITY WITHIN THESE AREAS BE NECESSARY, THESE AREAS WILL BE RESTRICTED WHEN THE RESPECTIVE FACILITIES ARE IN USE. ACCESS TO THESE AREAS WILL BE SUBJECT TO THE SAME OPERATIONAL CONTROL PROCEDURES AS DESCRIBED IN ABOVE FOR CLASSIFIED AREAS.
- LIMITATION ON CONSTRUCTION.**
 - ALL VEHICLES ARE TO BE PARKED AND SERVICED IN AN AREA DESIGNATED BY THE AIRPORT OPERATOR.
 - OPEN TRENCHES, EXCAVATIONS AND STOCKPILED MATERIAL AT THE CONSTRUCTION SITE SHOULD BE PROMINENTLY MARKED WITH RED OR ORANGE FLAGS AND EQUIPPED WITH FLASHING RED LIGHT UNITS (ACCEPTABLE TO THE AIRPORT OPERATOR AND THE FAA) DURING HOURS OF RESTRICTED VISIBILITY AND/OR DARKNESS.
 - STOCKPILED MATERIAL SHOULD BE CONSTRAINED IN A MANNER TO PREVENT MOVEMENT AS A RESULT OF AIRCRAFT BLAST OR WIND. MATERIAL SHOULD NOT BE STORED NEAR AIRCRAFT TURNING AREAS OR MOVEMENT AREAS.
 - THE TALLEST PIECE OF CONSTRUCTION EQUIPMENT USED WITHIN THE CONSTRUCTION LIMITS (OUTSIDE CLASSIFIED AREAS) WILL BE NO MORE THAN 50' TALL WITHOUT PRIOR APPROVAL OF RESIDENT ENGINEER AND AIRPORT DIRECTOR.
- MARKING AND LIGHTING OF CLOSED OR HAZARDOUS AREAS ON AIRPORTS.** ONCE THE CONTRACTOR BEGINS CONSTRUCTION WITHIN THE AIRFIELD OPERATIONS AREA, THE CONSTRUCTION CONTRACTOR SHALL HAVE A MAN ON CALL 24 HOURS PER DAY FOR EMERGENCY MAINTENANCE OF AIRPORT HAZARD LIGHTING AND BARRICADES. THIS WILL BE DISCUSSED AT THE PRE-CONSTRUCTION CONFERENCE AS AN AGENDA ITEM.
- EXCAVATION AND TRENCHES.** EXCAVATIONS AND OPEN TRENCHES MAY BE PERMITTED WITHIN THE CONSTRUCTION LIMITS OF THIS CONTRACT, PROVIDED THAT THEY ARE ADEQUATELY SIGNED, LIGHTED AND MARKED, EXCEPT THOSE AREAS WHICH SPECIFICALLY REQUIRE WORK DURING SHORT-TERM TAXIWAY SHUTDOWN.
- CONSTRUCTION VEHICLE TRAFFIC.** CONSTRUCTION VEHICLES SHALL NOT CROSS ANY ACTIVE OR INACTIVE RUNWAY WITHOUT ATCT CLEARANCE. ACCESS TO CONSTRUCTION SITES SHALL FOLLOW ROUTES UTILIZING TAXIWAYS, ACCESS AND PERIMETER ROADS, AS SHOWN ON THIS DRAWING AND/OR AS ESTABLISHED IN THE PRE-CONSTRUCTION CONFERENCE. ALL CONSTRUCTION EQUIPMENT AND VEHICLES SHALL BE PARKED OUTSIDE OF ALL CLASSIFIED AREAS, CRITICAL AREAS, RUNWAY APPROACH SURFACES AND WHERE DIRECTED DURING THE PRE-CONSTRUCTION CONFERENCE. ALL CONSTRUCTION EQUIPMENT SHALL BE FLAGGED AND LIGHTED IN ACCORDANCE WITH AC 150/5210-5. CONSTRUCTION ACCESS TO ALL SECURED AREAS WILL BE THROUGH LOCKED GATES OR THOSE MANNED BY SECURITY GUARDS (NORMAL WORKING HOURS AND AS ESTABLISHED DURING THE PRE-CONSTRUCTION CONFERENCE).
- AIRPORT AND AIRCRAFT SURFACE MAINTENANCE.** SOIL, DEBRIS, AND LOOSE MATERIAL DROPPED OR TRUCKED ONTO AIRPORT ROADS, TAXIWAYS, AND SOD SURFACE OR WHICH CAN BE BLOWN ONTO SUCH SURFACES SHALL BE IMMEDIATELY SWEEPED OR PICKED UP AND REMOVED OR PLACED INTO CLOSED CONTAINERS AS REQUIRED IN THE SPECIFICATIONS. ANY MATERIALS TRACKED ONTO AIRPORT ROADS SHALL BE SWEEPED OFF AT THE END OF THE DAY.
- CONTRACTOR'S SECURITY CLEARANCE.** THE CONTRACTOR AND HIS EMPLOYEES SHALL SUBMIT TO ALL SECURITY CLEARANCE REQUIREMENTS LISTED IN THE GENERAL PROVISIONS OF THE CONSTRUCTION CONTRACT. HE IS ALSO REQUIRED TO ADHERE TO ALL AIRPORT SECURITY REQUIREMENTS (I.E. SECURITY BADGES). THIS WILL INCLUDE AN EMPLOYMENT HISTORY SUMMARY, FINGERPRINTING, ETC OF ALL EMPLOYEES WITH ACCESS TO THE JOB SITE.
- CONSTRUCTION SAFETY PLAN APPLICABILITY AND RESPONSIBILITIES.** THIS PLAN, WHEN SIGNED BY ALL PARTICIPANTS AT THE PRE-CONSTRUCTION CONFERENCE, BECOMES PART OF THE CONTRACT.



SURVEY MONUMENTS

DESIGNATION	DESCRIPTION	NORTH	EAST	STATION*	OFFSET	ELEV.
A-2A	ALUM. TABLET	685705.94	2393962.24	131+70.07	330.12 RT	434.42
KDC-BLA3	ALUM. TABLET	684648.28	2398395.23	156+14.84	700.00 LT	440.04
KDC-BLA4	ALUM. TABLET	683356.50	2397827.61	174+00.33	700.00 LT	434.56
KDC-BLA7	BRASS TABLET	687552.99	2393623.66	116+00.00	700.00 LT	445.59
KDC-BLA8	BRASS TABLET	686634.16	2394500.37	128+70.00	700.00 LT	443.54

* EL. RUNWAY 14L/32R STATIONS



C:\Dan\Work\95073\CADD\100\95073-C-03.dwg, 6/8/2007 10:49:16 AM

REV	DATE	BY	APPR.	DESCRIPTION	PLOT FILE	REV	DATE	BY	APPR.	DESCRIPTION	PLOT FILE

DESIGNED BY: DJT
 DRAWN BY: DJT
 CHECKED BY: TNG
 DATE: 06/08/07



TWY K EROSION STABILIZATION
 9768 Airport Blvd, Box 3
 Mascoutah, IL 62258
 PH 618-624-2628
 FAX 618-586-5324



CONSTRUCTION SAFETY PLAN

DWG. FILE NAME
95073-C-03
 SHEET NO.
3

GENERAL NOTES

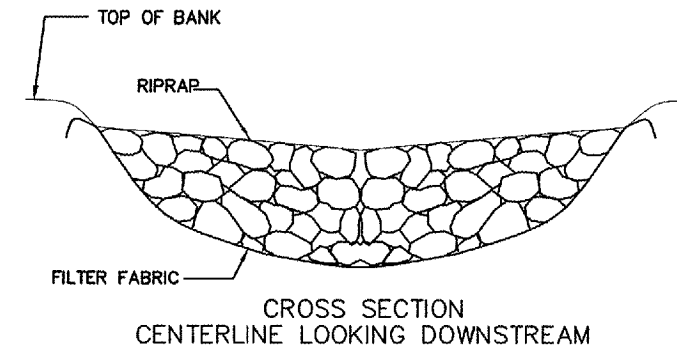
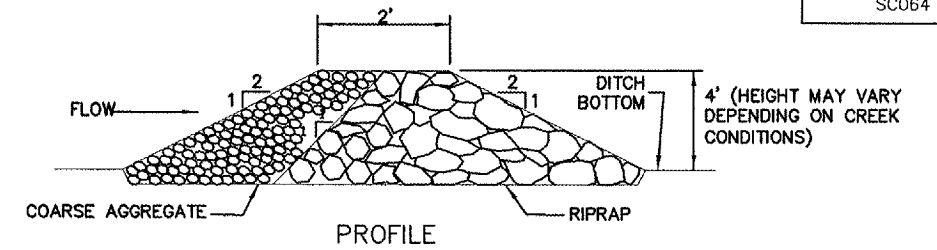
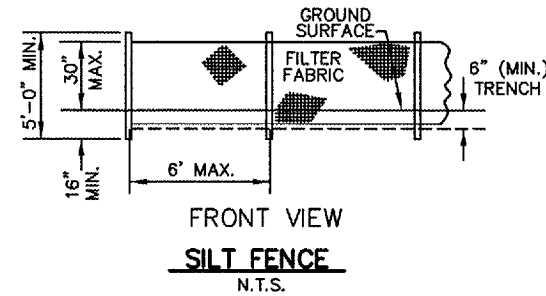
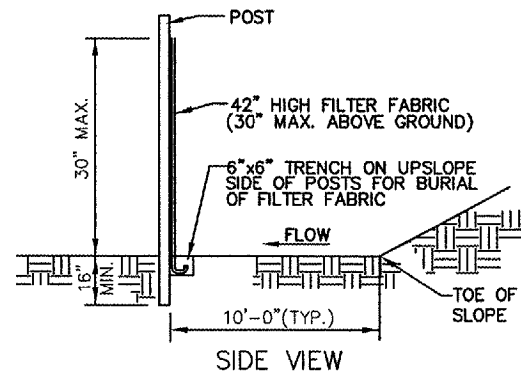
1. SITE DISCHARGE POINTS INDICATE THE GENERAL LOCATION WHERE RUNOFF FROM THE CORRESPONDING DRAINAGE AREA EXITS THE CONTRACT LIMITS. ALL SITE DISCHARGES ARE RECEIVED BY SILVER CREEK EITHER DIRECTLY OR VIA TRIBUTARIES WHICH INCLUDE CROOKED CREEK.
2. PER SPECIFICATION SECTION 901-3.4, THE CONTRACTOR IS REQUIRED TO MOW ALL GRASS WITHIN CONSTRUCTION LIMITS. SPECIFICALLY, GRASS MUST BE MAINTAINED AT A HEIGHT BETWEEN 6" AND 8".

TEMPORARY EROSION CONTROL QUANTITIES			
ITEM NO.	ITEM	UNIT	QUANTITY
AR156510	SILT FENCE	L.F.	200.00
AR156511	DITCH CHECKS	EACH	4.00
AR801853	STONE CHECK DAM	C.Y.	116.00
SEEDING / MULCHING QUANTITIES			
AR156531	EROSION CONTROL BLANKET	S.Y.	3,562.00
AR801510	SEEDING	ACRE	0.80

NOTES:
1. NO SILT FENCE IS SHOWN ON THIS SHEET. THE LOCATIONS OF THE QUANTITY INCLUDED WILL BE PLACED AT LOCATIONS DETERMINED IN THE FIELD SHOULD THE NEED ARISE

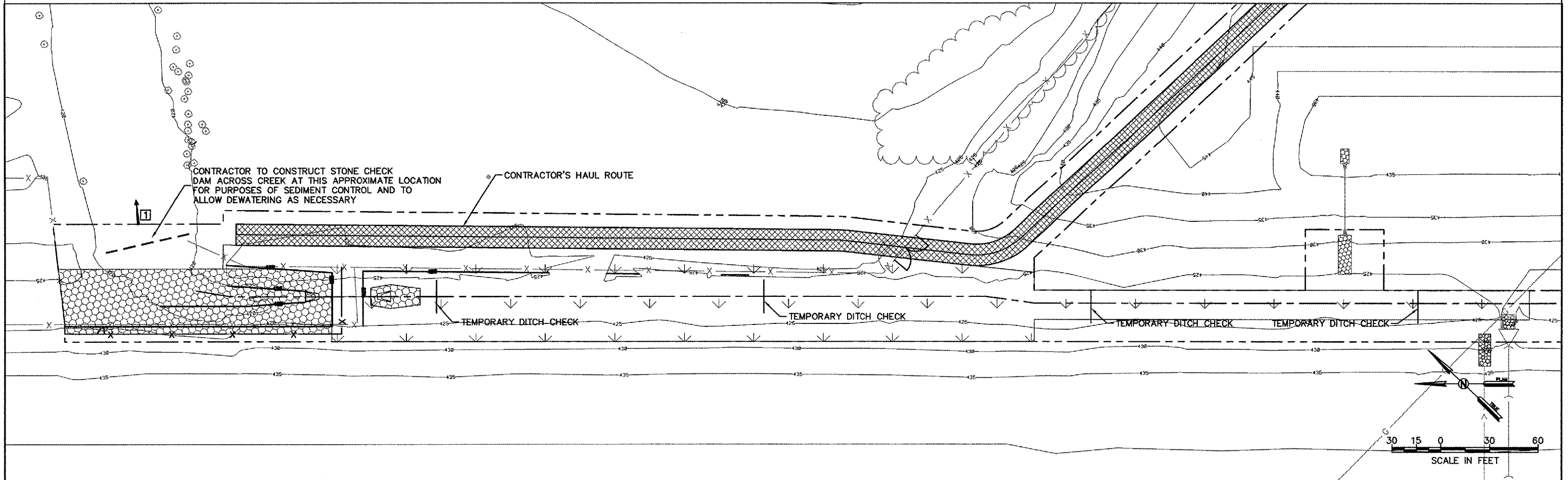
- LEGEND**
- AREA OF CONSTRUCTION AND APPROXIMATE DISTURBANCE LIMITS
 - ▨ RIPRAP
 - ▨ SEEDING / EROSION CONTROL FABRIC
 - PROJECT DRAINAGE PATH
 - ① SITE DISCHARGE POINT

SITE DISCHARGE POINT RECEIVING WATER
① SITE DISCHARGE TO LITTLE SILVER CREEK



STONE CHECK DAM
N.T.S.

NOTE: CONTRACTOR SHALL SECURE SIDES WITH SANDBAGS, ETC. AS NECESSARY SHOULD DEWATERING BE NECESSARY (PAID FOR UNDER ITEM AR801854).



CONTRACTOR TO CONSTRUCT STONE CHECK DAM ACROSS CREEK AT THIS APPROXIMATE LOCATION FOR PURPOSES OF SEDIMENT CONTROL AND TO ALLOW DEWATERING AS NECESSARY

REV.	DATE	BY	APPR.	DESCRIPTION	PLOT FILE	REV.	DATE	BY	APPR.	DESCRIPTION	PLOT FILE

DESIGNED BY: DJT
DRAWN BY: DJT
CHECKED BY: TNG
DATE: 06/08/07



TWY K EROSION STABILIZATION
9768 Airport Blvd, Box 3
Mascoutah, IL 62258
PH 618-624-2628
FAX 618-566-5324



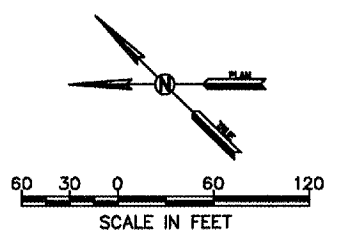
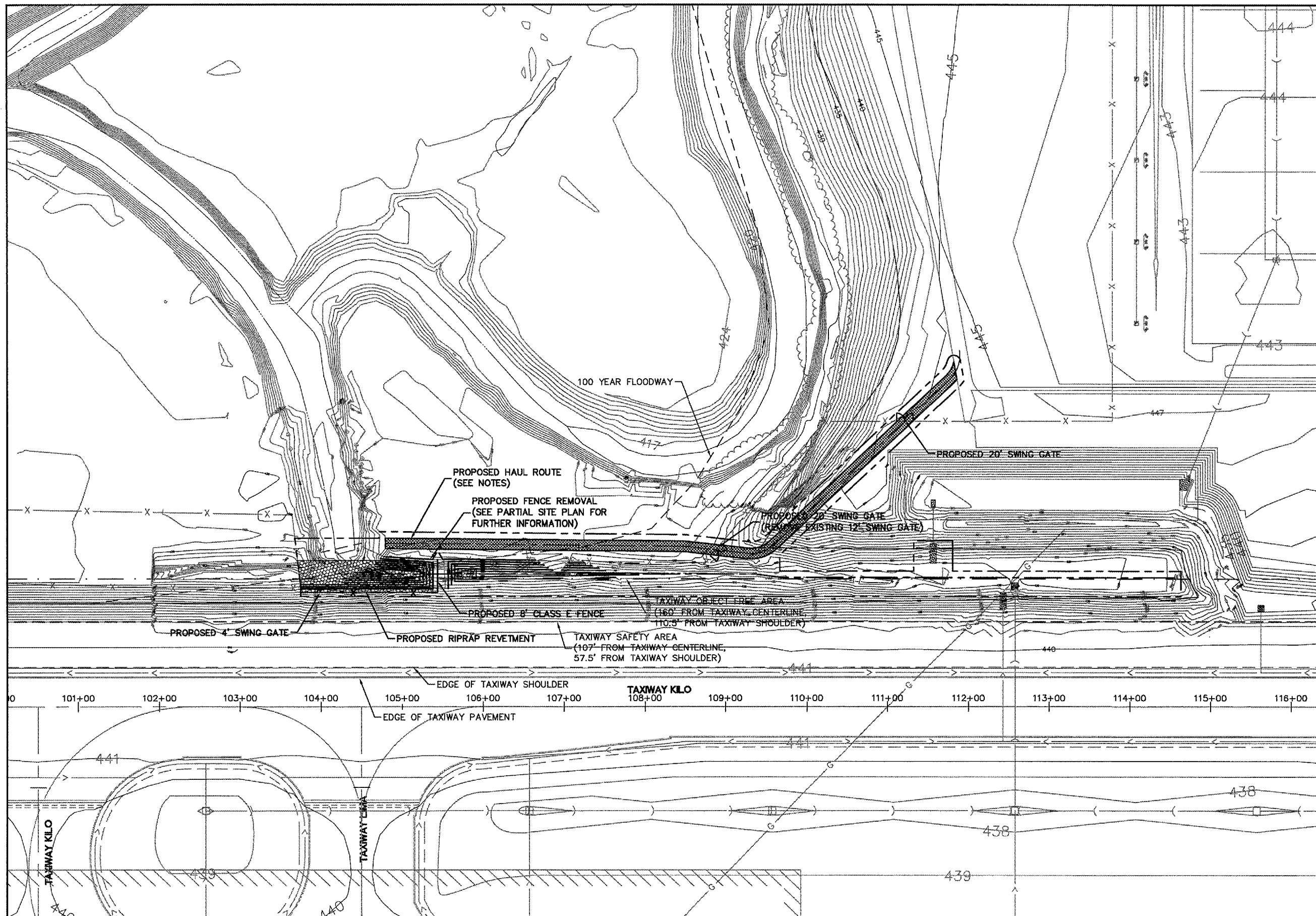
STORMWATER POLLUTION PREVENTION PLAN (DETAILS)

DWG. FILE NAME
95073-C-05
SHEET NO.
5

NOTES:

1. CONTRACTOR TO NOTIFY FAA (RUDY BRODSKY, 618.256.1800) PRIOR TO BEGINNING ANY EXCAVATION ACTIVITIES.
2. HAUL ROUTE LOCATION SHOWN IS APPROXIMATE ONLY. CONTRACTOR TO DETERMINE EXACT LOCATION AND COMPOSITION OF HAUL ROUTE. CONTRACTOR TO RESTORE ALL AREAS DISTURBED BY CONSTRUCTION OF HAUL ROUTE WITH COST BEING INCIDENTAL TO PAY ITEM AR150540 "HAUL ROUTE". HAUL ROUTE TO BE LEFT IN PLACE AT THE END OF CONSTRUCTION.
3. CONTRACTOR TO COMPLY WITH ANY/ALL REGULATIONS REQUIRED TO COMPLY WITH US ARMY CORPS OF ENGINEER NATIONWIDE PERMIT NUMBER 13, BANK STABILIZATION. SPECIFICALLY, CONTRACTOR TO MEET REQUIREMENT THAT ALL HEAVY EQUIPMENT WORKING IN WETLANDS MUST BE PLACED ON MATS, OR OTHER MEASURES MUST BE TAKEN TO MINIMIZE SOIL DISTURBANCE.
4. AT THE LOCATION SHOWN ON THE CONSTRUCTION SAFETY PLAN, A SECTION OF 12' WILDLIFE FENCE (APPROXIMATELY 250' LONG) WAS RECENTLY DAMAGED BY FLOOD DEBRIS. BEND POSTS STRAIGHT, DRIVE A NEW 2.875"Ø TERMINAL POST ADJACENT TO FORMERLY BENT POST AND FASTEN NEW POST TO OLD POST WITH BANDS. WORK TO BE PAID FOR UNDER ITEM AR801855, STABILIZE WILDLIFE POST. ACCESS TO FENCE LOCATIONS IS WITHIN THE SILVER CREEK FLOODPLAIN AND MAY REQUIRE LOW GROUND PRESSURE EQUIPMENT.

TAXIWAY KILO ALIGNMENT INFO		
STA	NORTHING	EASTING
100+00	2,392,302.08	688,503.48
110+00	2,392,992.41	687,779.99



REV.	DATE	BY	APPR.	DESCRIPTION	PLOT FILE	REV.	DATE	BY	APPR.	DESCRIPTION	PLOT FILE

DESIGNED BY: DJT
 DRAWN BY: DJT
 CHECKED BY: TNG
 DATE: 06/08/07



TWY K EROSION STABILIZATION
 9768 Airport Blvd, Box 3
 Mascoutah, IL 62258
 PH 618-624-2628
 FAX 618-566-5324

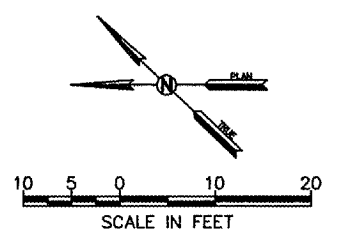
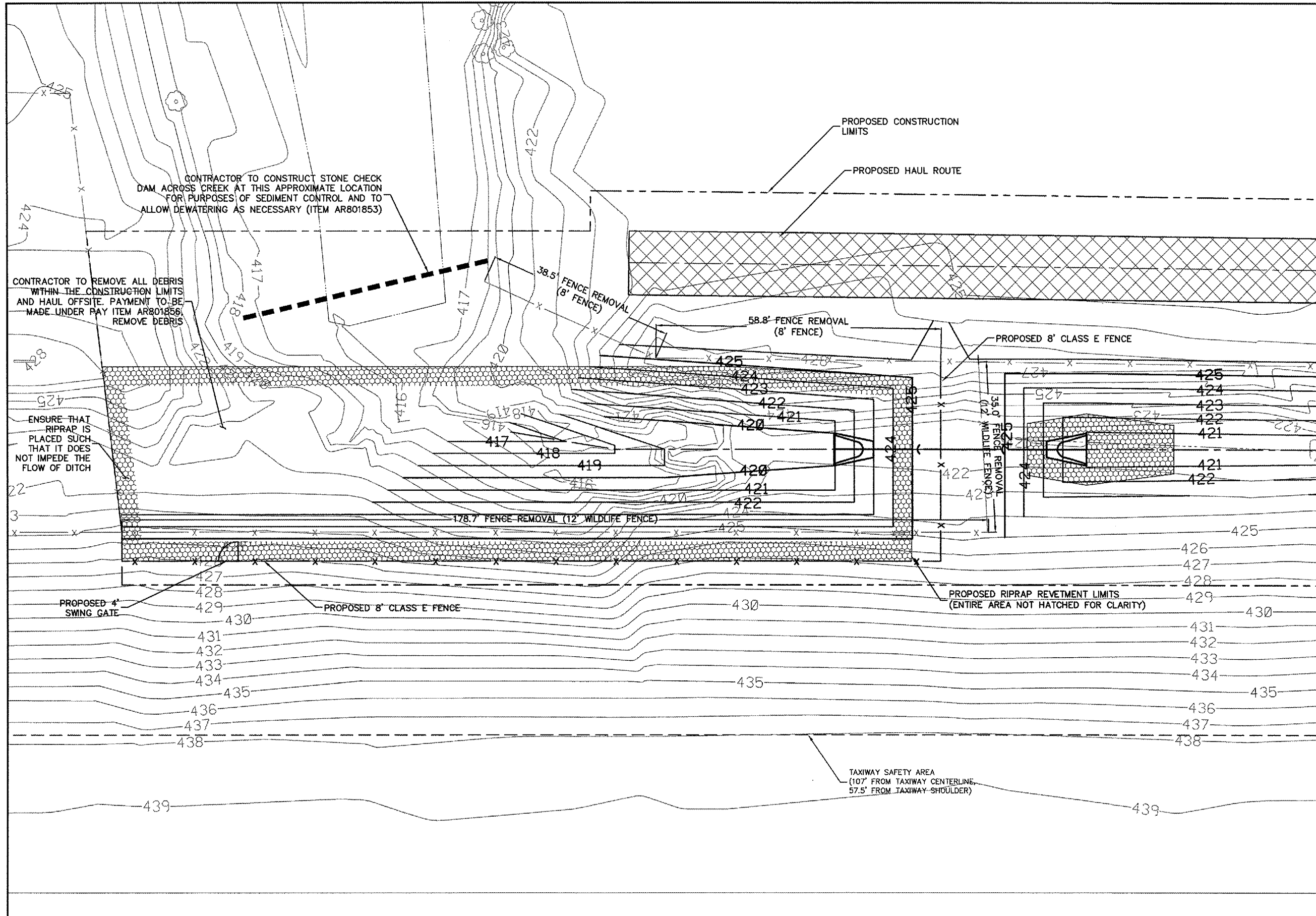


SITE PLAN

DWG. FILE NAME
95073-C-06
 SHEET NO.
6

NOTES:

1. CONTRACTOR TO NOTIFY FAA (RUDY BRODSKY, 618.256.1800) PRIOR TO BEGINNING ANY EXCAVATION ACTIVITIES.
2. DEWATERING, IF REQUIRED, WILL BE PAID FOR UNDER ITEM AR801854, DEWATERING.
3. CONTRACTOR TO COMPLY WITH ANY/ALL REGULATIONS REQUIRED TO MEET US ARMY CORPS OF ENGINEER NATIONWIDE PERMIT NUMBER 13, BANK STABILIZATION. SPECIFICALLY, CONTRACTOR TO MEET REQUIREMENT THAT ALL HEAVY EQUIPMENT WORKING IN WETLANDS MUST BE PLACED ON MATS, OR OTHER MEASURES MUST BE TAKEN TO MINIMIZE SOIL DISTURBANCE.
4. FENCING WORK MUST BE PHASED SUCH THAT THE SECURITY LINE REMAINS IN TACT AT ALL TIMES. DURING FENCE REMOVAL REQUIRED FOR PLACEMENT OF GATES, PLACEMENT OF NEW FENCE, ETC., THE CONTRACTOR MUST GUARD THIS OPENING UNTIL THE SECURITY LINE IS RE-ESTABLISHED. CONTRACTOR PERSONNEL GUARDING THIS OPENING MUST HAVE SECURITY CLEARANCE AS DEFINED ELSEWHERE IN THE PLANS AND SPECIFICATIONS. IN ORDER TO MEET THESE REQUIREMENTS, CONSTRUCTION OF THE CULVERT WILL LIKELY REQUIRE COMPLETION WITHIN A SINGLE WORKDAY (RE-ESTABLISHMENT OF THE SECURITY LINE IN THIS LOCATION WILL REQUIRE PLACEMENT OF THE FES GRATES).



REV.	DATE	BY	APPR.	DESCRIPTION	PLOT FILE	REV.	DATE	BY	APPR.	DESCRIPTION	PLOT FILE

DESIGNED BY: DJT
 DRAWN BY: DJT
 CHECKED BY: TNG
 DATE: 06/08/07

MidAmerica
ST. LOUIS AIRPORT

EarthTech
A Tyco International Ltd. Company

TWY K EROSION STABILIZATION

9788 Airport Blvd, Box 3
 Mascoutah, IL 62258
 PH 618-624-2628
 FAX 618-566-5324



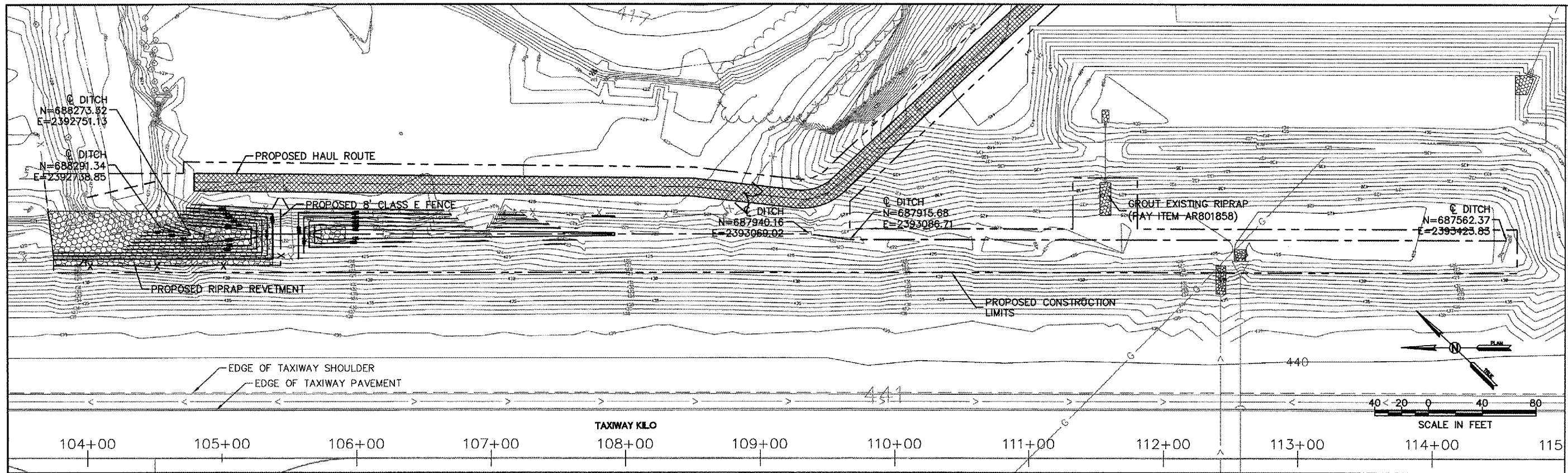
DETAILED SITE PLAN

DWG. FILE NAME
95073-C-07

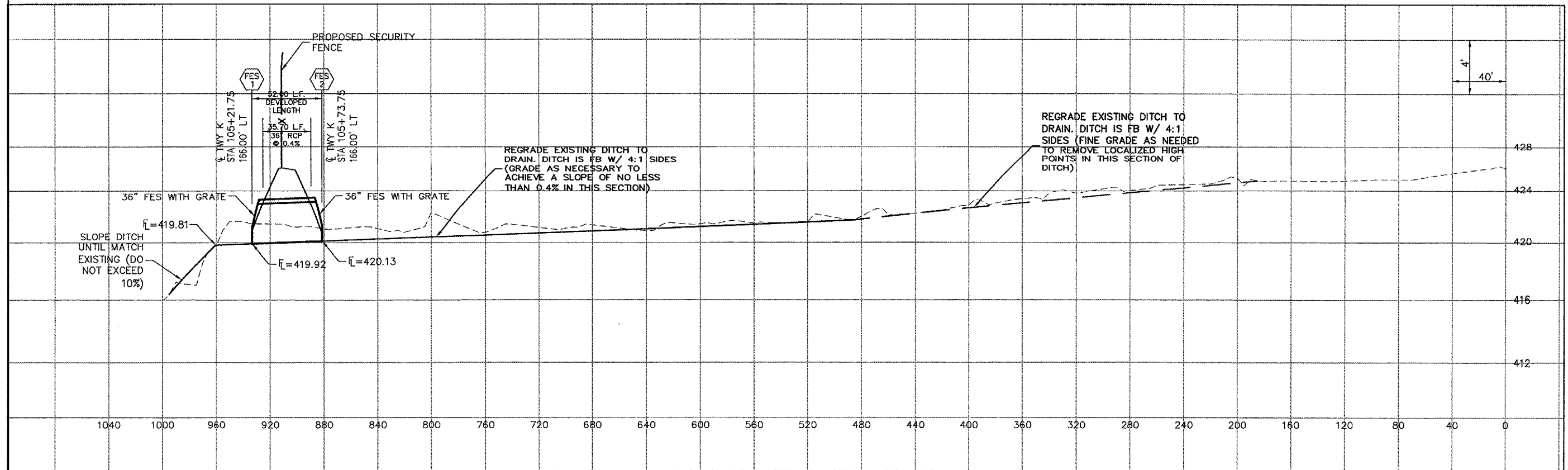
SHEET NO.
7

NOTES:

1. CONTRACTOR REQUIRED TO PROVIDE ANY/ALL DEWATERING MEANS NECESSARY. THESE COSTS SHALL BE INCLUDED IN ITEM AR801B54.



PLAN



PROFILE

DESIGNED BY: DJT	DATE: 06/08/07
DRAWN BY: DJT	
CHECKED BY: TNG	
REV. DATE BY APPR. DESCRIPTION PLOT FILE	REV. DATE BY APPR. DESCRIPTION PLOT FILE



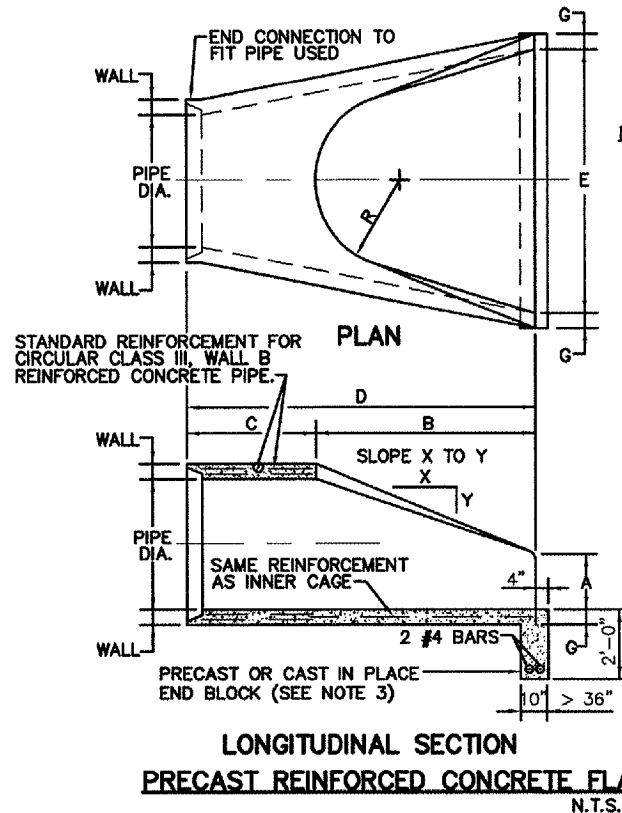
TWY K EROSION STABILIZATION

9768 Airport Blvd, Box 3
Mascoutah, IL 62258
PH 618-624-2628
FAX 618-566-5324



DITCH PLAN AND PROFILE

DWG. FILE NAME
95073-C-08
SHEET NO.
8

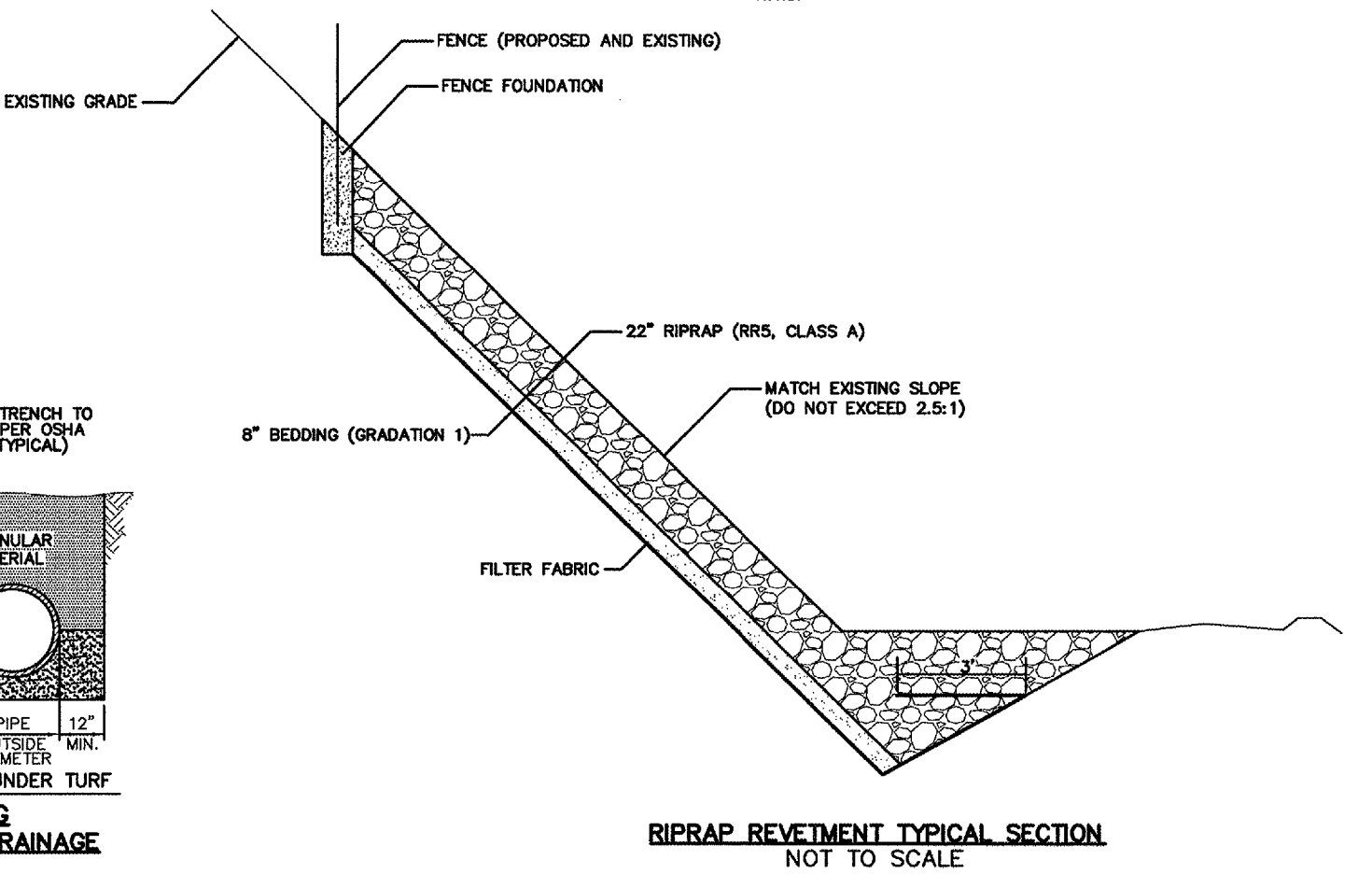
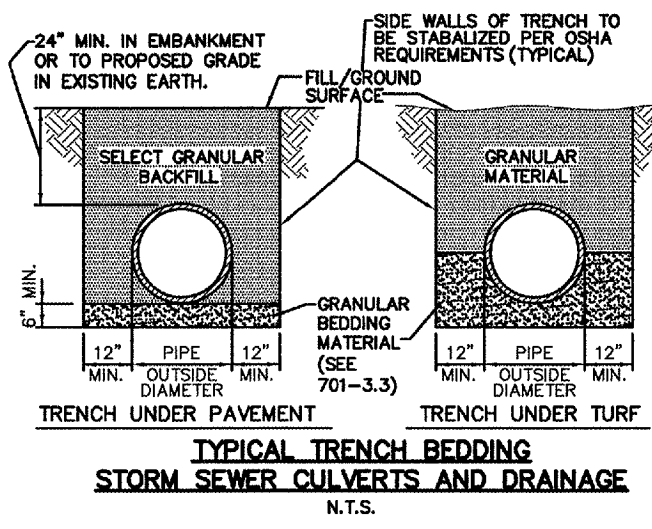
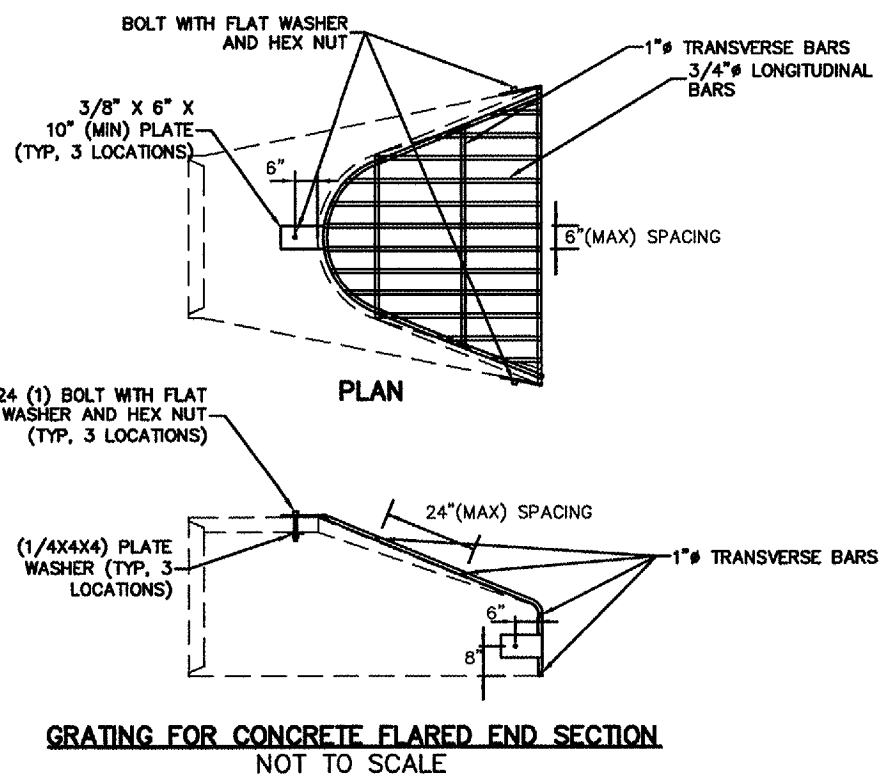
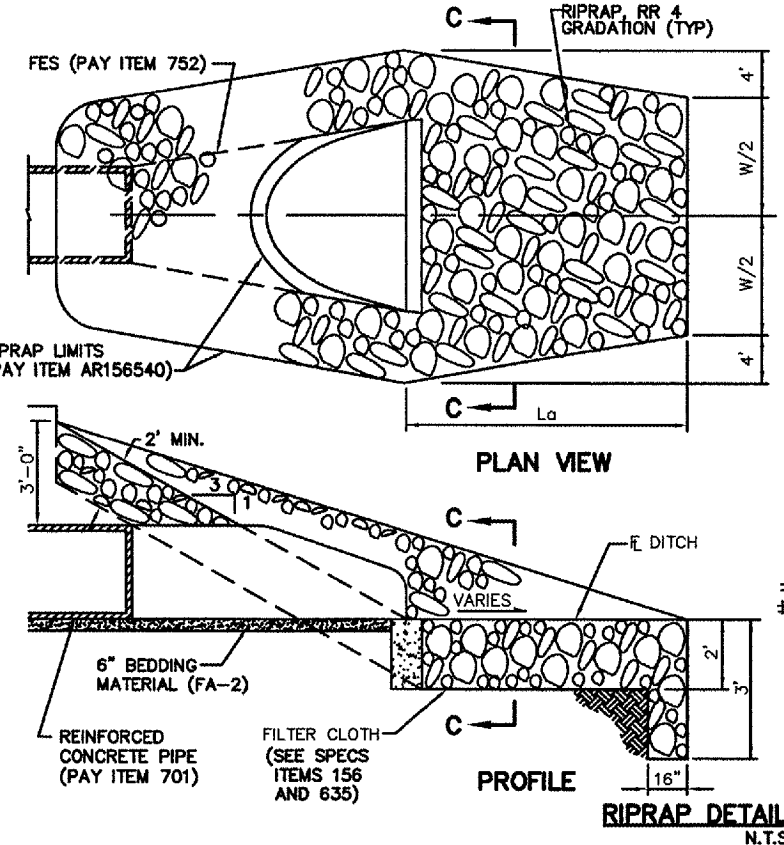


- NOTES:**
1. PRECAST CONCRETE FLARED END SECTIONS SHALL CONFORM TO THE APPLICABLE REQUIREMENTS OF AASHTO M-170 CLASS III, WALL B REINFORCED CONCRETE PIPE.
 2. PRECAST CONCRETE FLARED END SECTION FOR PIPE DIAMETER REQUIRED SHALL BE AS INDICATED ON DETAIL PLAN FOR EACH INDIVIDUAL INSTALLATION.
 3. CAST-IN-PLACE END BLOCK SHALL BE PLACED PRIOR TO THE INSTALLATION OF THE FLARED END SECTION. THE END BLOCK SHALL BE BACKFILLED IN ACCORDANCE WITH ITEM 752 OF THE STANDARD SPECIFICATIONS FOR CONSTRUCTION OF AIRPORTS WITH COST BEING INCIDENTAL TO THE END SECTION.

PIPE DIA.	APPROX. WT.(LBS.)	WALL	A	B	C	D	E	G	R	SLOPE
36"	4100	4"	15"	5'-3"	34-3/4"	8'-1 3/4"	6'-0"	4"	20"	2.5:1

* RADIUS AS FURNISHED BY MANUFACTURER

RIPRAP APRON SIZE		
PIPE DIA.	W	La
36"	10'	18'



- NOTES:**
- GRATING DETAIL SHOWN IS INTENDED FOR USE WITH 36" PRECAST REINFORCED CONCRETE FLARED END SECTION SHOWN. COORDINATE WITH PRECAST FES MANF. AS NECESSARY. ALL MATERIALS TO BE GALVANIZE. ALL MATERIALS TO MEET SAME STANDARDS AS IDOT STANDARD 542311, GRATING FOR CONCRETE FLARED END SECTION.

REV.	DATE	BY	APPR.	DESCRIPTION	PLOT FILE	REV.	DATE	BY	APPR.	DESCRIPTION	PLOT FILE

DESIGNED BY: DJT
DRAWN BY: DJT
CHECKED BY: TNG
DATE: 06/08/07

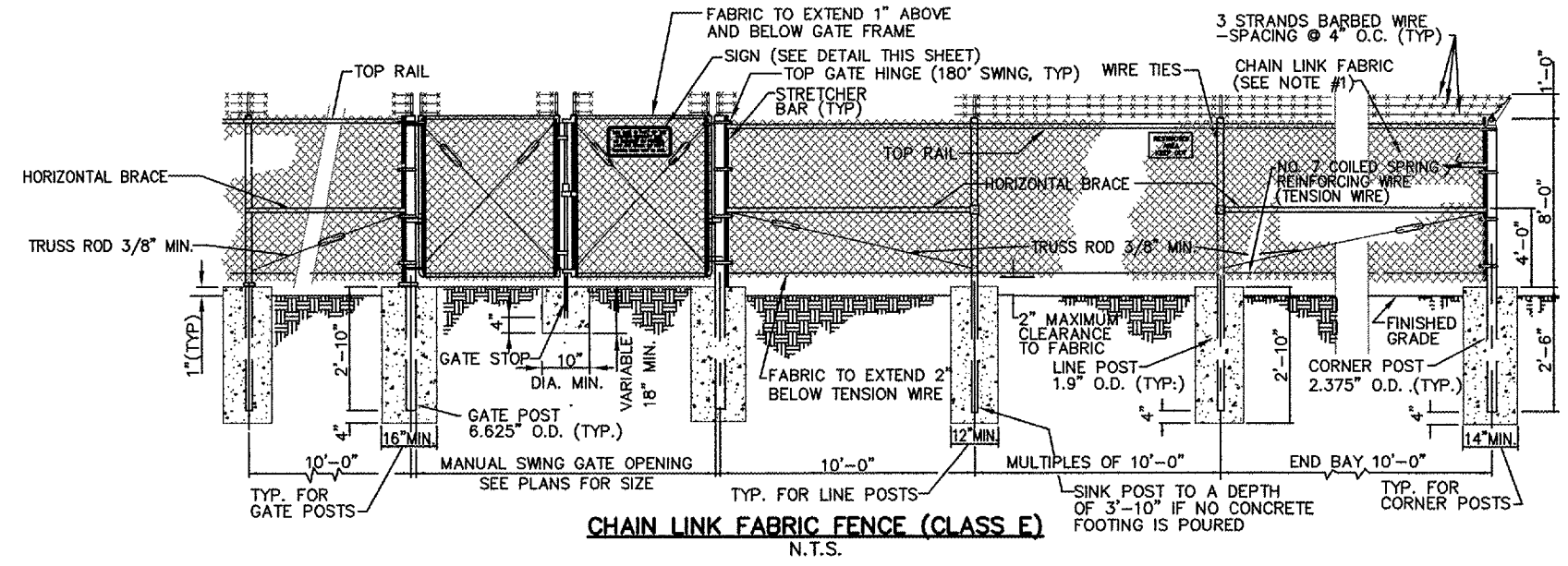


TWY K EROSION STABILIZATION
9768 Airport Blvd, Box 3
Mascoutah, IL 62258
PH 618-624-2628
FAX 618-566-5324



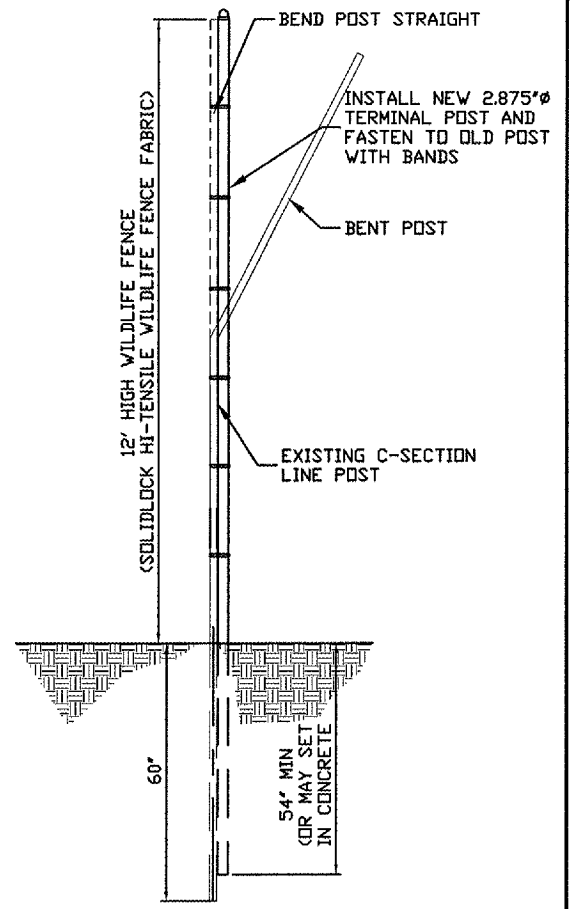
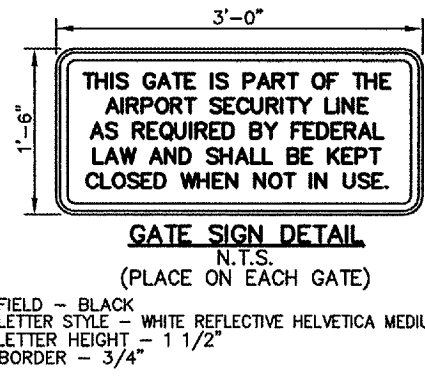
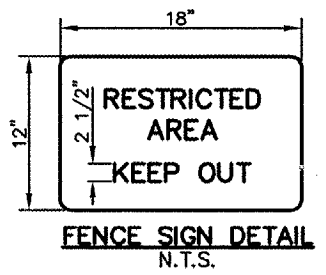
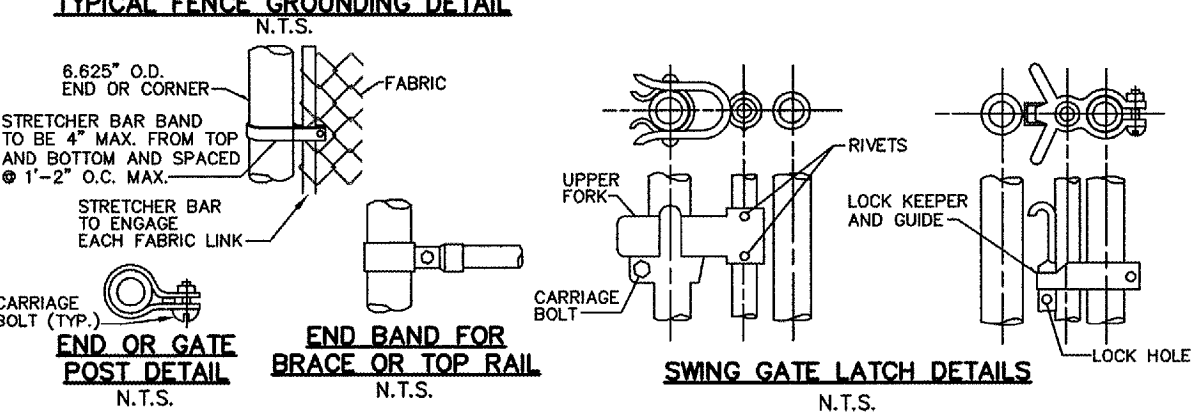
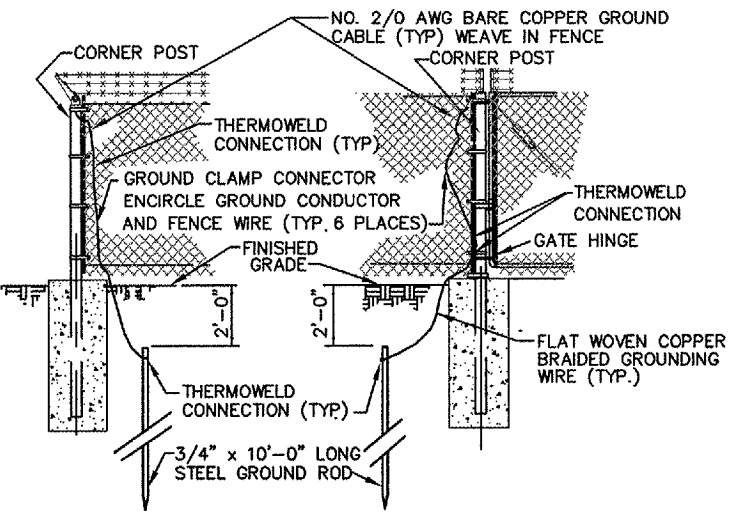
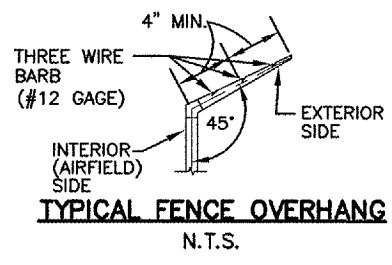
DWG. FILE NAME
95073-C-09
SHEET NO.
9

DETAILS



FENCE NOTES:

- CHAIN LINK FABRIC TO BE #9 GAUGE ZINC COATED.
- CONTINUOUS FENCE SHALL BE GROUNDED AT INTERVALS NOT TO EXCEED 500'. THERE SHALL BE A GROUND WITHIN 100' OF GATES IN EACH SECTION OF FENCE ADJACENT TO THE GATE.
- BARBED WIRE EXTENSION ARMS SHALL POINT TO EXTERIOR AND SHALL SUPPORT A MINIMUM DEAD LOAD OF 400 POUNDS FROM END OF ARM.
- BOTTOM TENSION WIRE SHALL BE STRETCHED TAUT FROM TERMINAL POST AND SECURELY FASTENED TO EACH INTERMEDIATE POST 6" ABOVE THE GROUND LINE.
- TOP AND BOTTOM SELVAGES OF FENCE TO HAVE A TWISTED AND BARBED FINISH.
- ALL BOLTS ON ALL GATES, HINGES AND HARDWARE MUST BE NON-REMOVABLE.
- IT IS PERMITTED TO SUBSTITUTE STEEL PIPE, TYPE "A", AS SPECIFIED IN 162-2.3 (o)(2), FOR STEEL PIPE, TYPE "A".



*COSTS FOR RELOCATING OR PROVIDING NEW SIGNS IS INCIDENTAL TO THE FENCE / GATE

LINE POSTS		GATE FRAMES		GATE POST SIZE	
SECTION	SIZE & WEIGHTS LBS./L.F.	SECTION	SIZE & WEIGHTS LBS./L.F.	GATE OPENING	PIPE TYPE A SIZE
PIPE TYPE A 2.375" O.D.	3.65	PIPE TYPE A 1.66" O.D.	2.27	24 FT.	6.625" O.D.
TERMINAL POSTS		HORIZONTAL BRACES			
SECTION	SIZE & WEIGHTS LBS./L.F.	SECTION	SIZE & WEIGHTS LBS./L.F.		
PIPE TYPE A 2.875" O.D.	5.79	PIPE TYPE A 1.66" O.D.	2.27		

DESIGNED BY: DJT
DRAWN BY: DJT
CHECKED BY: TNG
DATE: 06/08/07



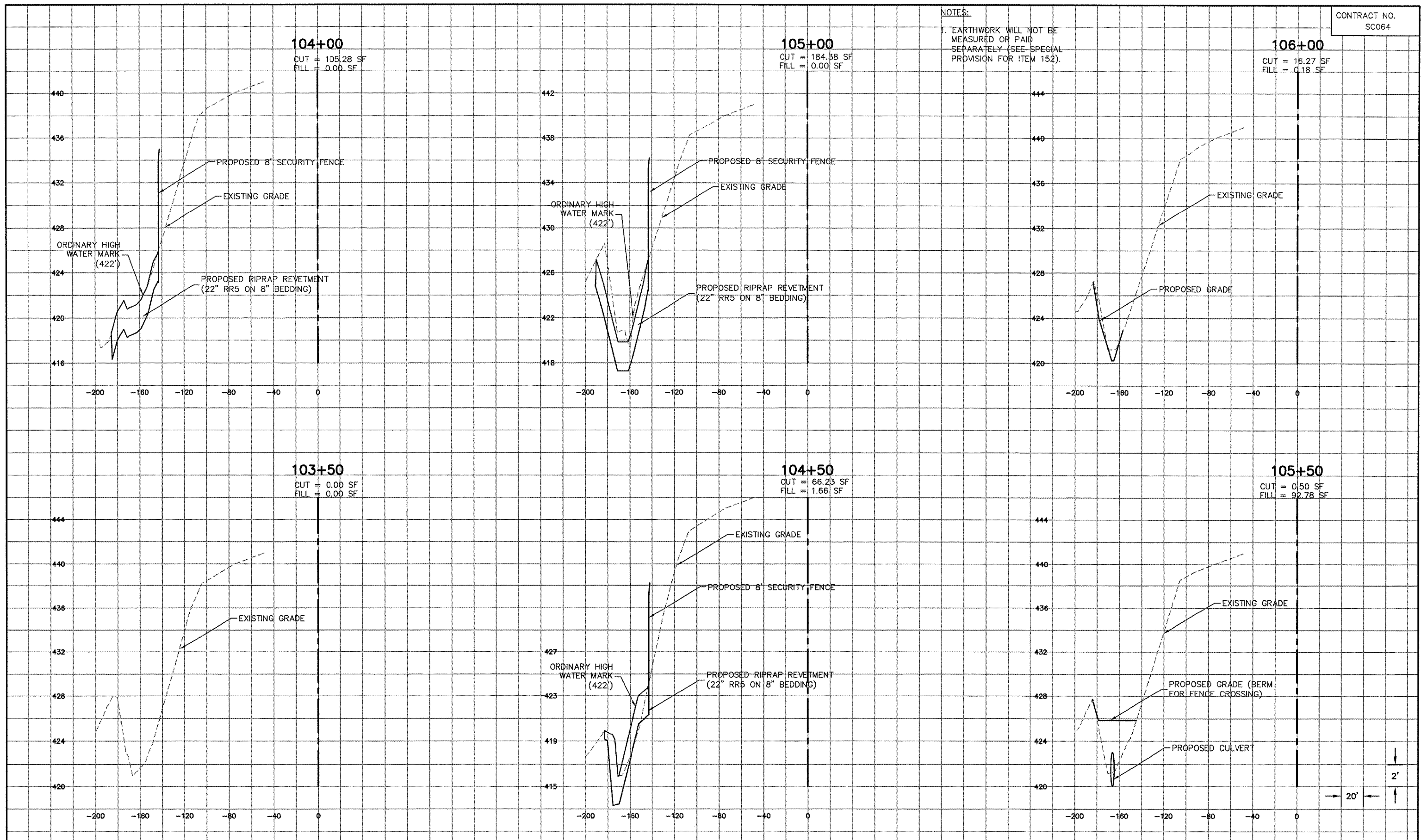
TWY K EROSION STABILIZATION
9768 Airport Blvd, Box 3
Mascoutah, IL 62258
PH 618-624-2628
FAX 618-566-5324



FENCE DETAILS

DWG. FILE NAME: 95073-C-10
SHEET NO.: 10

NOTES:
1. EARTHWORK WILL NOT BE MEASURED OR PAID SEPARATELY (SEE SPECIAL PROVISION FOR ITEM 152).



REV.	DATE	BY	APPR.	DESCRIPTION	PLOT FILE

DESIGNED BY: DJT
DRAWN BY: DJT
CHECKED BY: TNG
DATE: 06/08/07



TWY K EROSION STABILIZATION
9768 Airport Blvd, Box 3
Mascoutah, IL 62258
PH 618-624-2628
FAX 618-566-5324



TWY KILO
CROSS-SECTIONS
STA. 103+50 TO 106+00

DWG. FILE NAME
95073-C-11
SHEET NO.
11

C:\Dan\Work\195073\CAD\100\%95073-C-11.dwg, 6/7/2007 3:16:14 PM