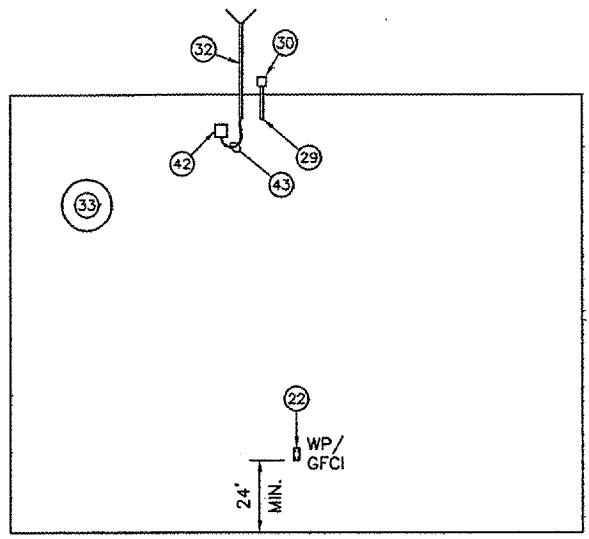
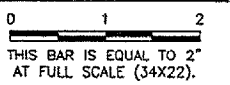


NOMENCLATURE

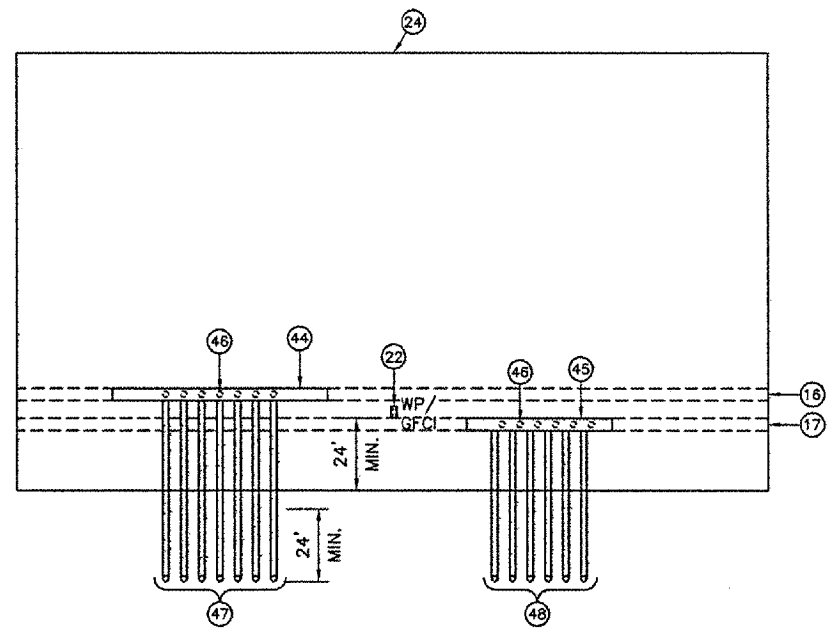
- 16 5KV SERIES CIRCUIT WIRING WIREWAY, INSIDE BUILDING.
- 17 240V, 120V AND CONTROL WIRING WIREWAY, INSIDE BUILDING.
- 22 WEATHERPROOF, GFCI DUPLEX RECEPTACLE.
- 29 TWO #12 THWN (PHOTOCELL CONTROL), ONE #12 GROUND IN 3/4" CONDUIT.
- 30 PHOTOCELL, SUPPLIED WITH TIME CLOCK.
- 32 RADIO CONTROLLER ANTENNA. INSTALL AS REQUIRED BY L-854 EQUIPMENT SUPPLIER.
- 33 EXHAUST FAN
- 42 4" X 4" X 4" NEMA 4 JUNCTION BOX.
- 43 RADIO CONTROLLER COAXIAL CABLE. EXIT BOTTOM OF JUNCTION BOX THROUGH WATERPROOF GROMMET.
- 44 4" X 4" NEMA 3R WIREWAY. MOUNT AT SAME HEIGHT AS INTERIOR WIREWAY. PROVIDE WEATHERPROOF ADHESIVE LABEL READING: "SERIES CIRCUIT WIRING".
- 45 4" X 4" NEMA 3R WIREWAY. MOUNT AT SAME HEIGHT AS INTERIOR WIREWAY. PROVIDE WEATHERPROOF ADHESIVE LABEL READING: "240V, 120V WIRING".
- 46 2" CONDUIT NIPPLES BETWEEN INTERIOR AND EXTERIOR WIREWAYS (TYP.).
- 47 2" CONDUITS ACROSS PAVEMENT TO MINIMUM OF 5' FROM EDGE OF PAVEMENT (SEE NEW VAULT SITE PLAN FOR ADDITIONAL INFORMATION). INSTALL THE FOLLOWING CIRCUITS:
 - TWO 1/C #8 5KV, L-824, TYPE C CABLES IN UNIT DUCT.
 (NEW RUNWAY 03/21 HOMERUN. SEE PLANS FOR ADDITIONAL INFORMATION.)
 - TWO 1/C #8 5KV, L-824, TYPE C CABLES IN UNIT DUCT.
 (NEW RUNWAY 16/34 HOMERUN. SEE PLANS FOR ADDITIONAL INFORMATION.)
 - TWO 1/C #8 5KV, L-824, TYPE C CABLES IN UNIT DUCT.
 (NEW CKT. #1, TAXIWAY A, A-1, A-2 HOMERUN. SEE PLANS FOR ADDITIONAL INFORMATION.)
 - TWO 1/C #8 5KV, L-824, TYPE C CABLES IN UNIT DUCT.
 (NEW CKT. #2, TAXIWAY C, C1 HOMERUN. SEE PLANS FOR ADDITIONAL INFORMATION.)
 - TWO 1/C #8 5KV, L-824, TYPE C CABLES IN UNIT DUCT.
 (NEW CKT. #3, TAXIWAY B HOMERUN. SEE PLANS FOR ADDITIONAL INFORMATION.)
 - UNUSED CONDUITS SHALL BE CAPPED.
- 48 2" CONDUITS ACROSS PAVEMENT TO MINIMUM OF 5' FROM EDGE OF PAVEMENT (SEE NEW VAULT SITE PLAN FOR ADDITIONAL INFORMATION). INSTALL THE FOLLOWING CIRCUITS:
 - TWO #4 USE (240V), ONE #6 GROUND IN UNIT DUCT TO REIL 16.
 SEE PLANS FOR ADDITIONAL INFORMATION.
 - TWO #4 USE (240V), ONE #6 GROUND IN UNIT DUCT TO VASI 16.
 SEE PLANS FOR ADDITIONAL INFORMATION.
 - TWO #4 USE (120V), ONE #6 GROUND IN UNIT DUCT TO WIND TEE.
 SEE PLANS FOR ADDITIONAL INFORMATION.
 - TWO #4 USE (120V), ONE #6 GROUND IN UNIT DUCT TO WIND CONE.
 SEE PLANS FOR ADDITIONAL INFORMATION.
 - UNUSED CONDUITS SHALL BE CAPPED.

REVISIONS

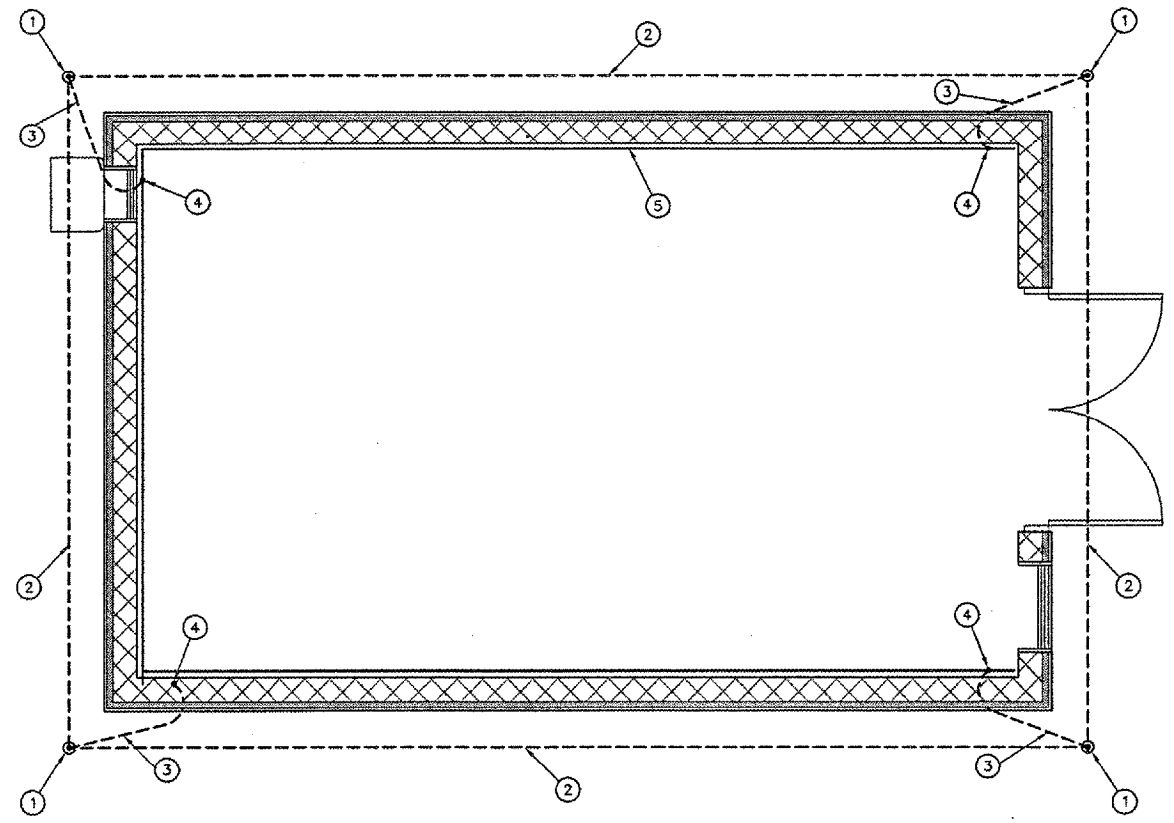
NUMBER	BY	DATE



DETAIL D
 3/8"=1'-0"



DETAIL E
 3/8"=1'-0"



VAULT GROUNDING & BONDING PLAN
 3/8"=1'-0"

VAULT GROUNDING & BONDING NOTES

- 1 3/4" DIAMETER x 10' LONG COPPERCLAD GROUND ROD. BOND GROUND WIRES TO GROUND ROD USING EXOTHERMIC WELD, CADWELD, OR EQUIVALENT. CLAMPED CONNECTIONS SHALL NOT BE ACCEPTABLE.
- 2 #2/0 BARE COPPER GROUND WIRE.
- 3 #2 INSULATED GROUND WIRE. INSTALL IN 1/2" PVC CONDUIT TO 1'-0" BELOW GRADE.
- 4 CLAMP # 2 INSULATED GROUND WIRE TO VAULT GROUND BUS.
- 5 VAULT GROUND BUS, 1/2"x3/4" COPPER BUS BAR. STAND-OFF MOUNT, 6" MINIMUM ABOVE VAULT FLOOR ON ALL SIDES.

VERMILION COUNTY AIRPORT
 DANVILLE, ILLINOIS
 RELOCATE AIRFIELD ELECTRICAL VAULT
 VAULT DETAILS - 2

© Copyright CMT, Inc.
CMT
 CRAWFORD, MURPHY & TILLY, INC.
 CONSULTING ENGINEERS
 License No. 181-000615

DESIGN BY:	WDP
DRAWN BY:	DLB
CHECKED BY:	
APPROVED BY:	
DATE:	06-22-2007
JOB No:	0704202
ILLINOIS PROJECT DMV-3684	
A.I.P. PROJECT 3-17-0032-B11	
SHEET 8 OF 16 SHEETS	