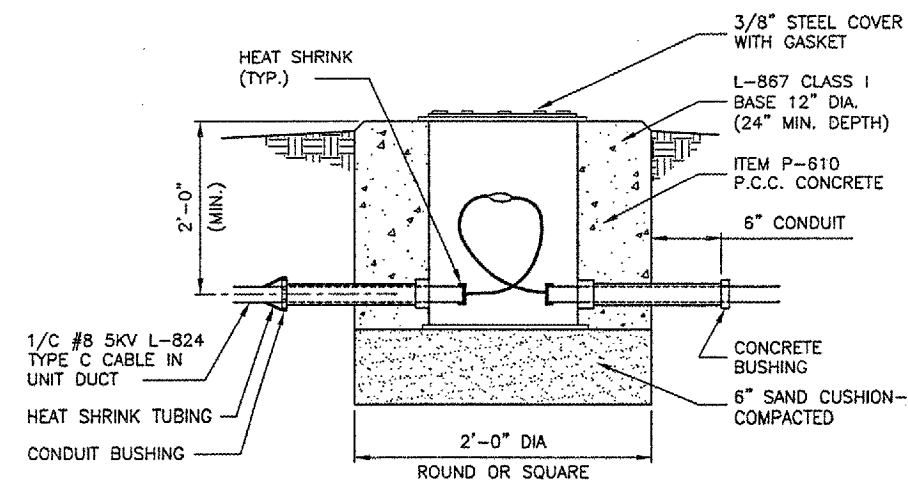


EXISTING BASE MOUNTED MEDIUM INTENSITY MARKER LIGHTS

N.T.S.



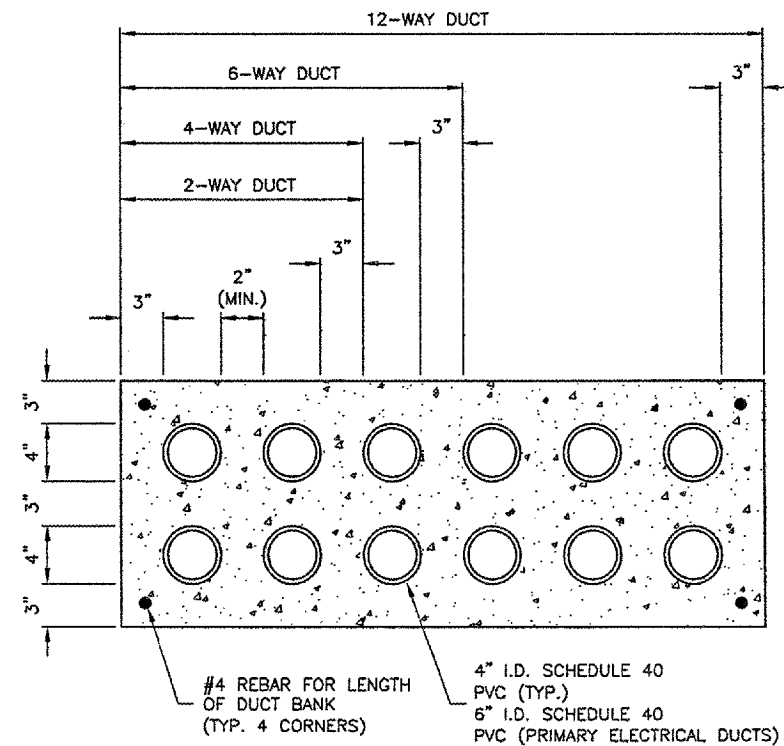
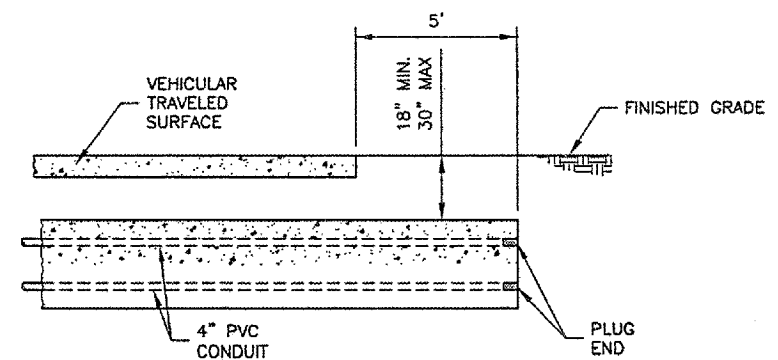
SPLICE CAN DETAIL

N.T.S.

UNIT DUCT SHALL BE TERMINATED AT THE L-823 CONNECTORS AND SEALED WITH HEAT SHRINK AS SPECIFIED.

SWITCH OVER NOTES

1. THE CONTRACTOR SHALL FIELD LOCATE AIRFIELD CIRCUITS AND HAND EXCAVATE AT THE LOCATION SELECTED AS THE CONNECTION POINT FOR THE NEW EXTENSION TO THE PROPOSED VAULT.
2. THE CONTRACTOR SHALL EXPOSE SUFFICIENT CONDUCTORS TO DETERMINE CABLE SIZE AND TYPE.
3. THE CONTRACTOR SHALL INSTALL A SPLICE CAN AS DETAILED. (AT SELECT LOCATIONS THE SWITCH OVER MAY BE AT AN EXISTING BASE MOUNTED LIGHT, THESE LOCATIONS ARE SHOWN IN THE PLANS.)
4. THE CONTRACTOR SHALL FEED THE EXISTING CONDUCTORS INTO THE SPLICE CAN AS NECESSARY TO PROVIDE SUFFICIENT SLACK IN THE SYSTEM.
5. THE CONTRACTOR SHALL FEED THE NEW CONDUCTORS INTO THE SPLICE CAN AND CONNECT TO THE EXISTING CONDUCTORS.



DUCT BANK DETAILS

N.T.S.

DUCT BANK NOTES

1. DIMENSIONS SHOWN ARE MINIMUM.
2. TOP OF CONCRETE ENCASEMENT TO BE NOT LESS THAN 18" BELOW FINISHED SUBGRADE.
3. DUCT CONCRETE TO BE ITEM 610 STRUCTURAL P.C.C. CONCRETE.
4. ALL DUCT WILL BE 4" INSIDE DIAMETER.
5. LOCATIONS SHOWN ARE APPROXIMATE. DUCT BANKS TO BE INSTALLED AT LOCATIONS DESIGNATED BY THE ENGINEER.
6. CONTRACTOR WILL INSTALL DUCT BANKS AT A DEPTH WHICH WILL NOT CONFLICT WITH ELEVATION SENSITIVE UTILITIES.
7. A PULL WIRE MUST BE PROVIDED IN EACH UNUSED CONDUIT. UNUSED DUCT MUST BE SEALED WITH PVC PLUGS/CAPS TO THE SATISFACTION OF THE ENGINEER.
8. DUCT BANKS MUST EXTEND A MINIMUM OF 5' BEYOND THE PROPOSED EDGE OF PAVEMENT.

REVISIONS		
NUMBER	BY	DATE

0 1 2  
 THIS BAR IS EQUAL TO 2"  
 AT FULL SCALE (34X22).

VERMILION COUNTY AIRPORT  
 DANVILLE, ILLINOIS  
 RELOCATE AIRFIELD ELECTRICAL VAULT  
 ELECTRICAL DETAILS SHEET 1

© Copyright GMT, Inc.

**GMT**  
 CRAWFORD, MURPHY & TILLY, INC.  
 CONSULTING ENGINEERS  
 License No. 184-000813

DESIGN BY: CET

DRAWN BY: CMT

CHECKED BY:

APPROVED BY:

DATE: 06-22-2007

JOB No: 0704202

ILLINOIS PROJECT DNV-3684

A.I.P. PROJECT 3-17-0032-B11

SHEET 12 OF 16 SHEETS