

LETTING ITEM NUMBER

7A

LETTING CONTRACT NUMBER

WI051

TOTAL SHEETS: 9

CONSTRUCTION PLANS FOR OBSTRUCTION REMOVAL, RUNWAY 20 APPROACH NORTH EAST OF RUNWAY 2-20 AT WILLIAMSON COUNTY REGIONAL AIRPORT MARION-HERRIN, WILLIAMSON COUNTY, ILLINOIS

DATE: 02/25/2007

REV: 06/12/2007

ILLINOIS PROJECT No. MWA-3656

A.I.P. PROJECT No. 3-17-0065-

SUMMARY OF QUANTITIES				
ITEM NO.	DESCRIPTION	UNIT	QUANTITY	AS BUILT QUANTITY
AR150510	ENGINEER'S FIELD OFFICE	EA.	1	
AR151450	CLEARING AND GRUBBING	ACRE	20.24	
AR152410	UNCLASSIFIED EXCAVATION	C.Y.	66,286	
AR156510	SILT FENCE	L.F.	1,600	
AR901510	SEEDING	ACRE	20.24	
AR908510	MULCHING	ACRE	20.24	

INDEX OF SHEETS

1. COVER
2. SAFETY PLAN
3. LOCATION OF OBSTRUCTIONS
4. EROSION & SEDIMENT CONTROL PLAN
5. CLEARING & SEEDING PLAN
6. BASELINE FOR EARTHWORK
- 7.-9. CROSS-SECTIONS

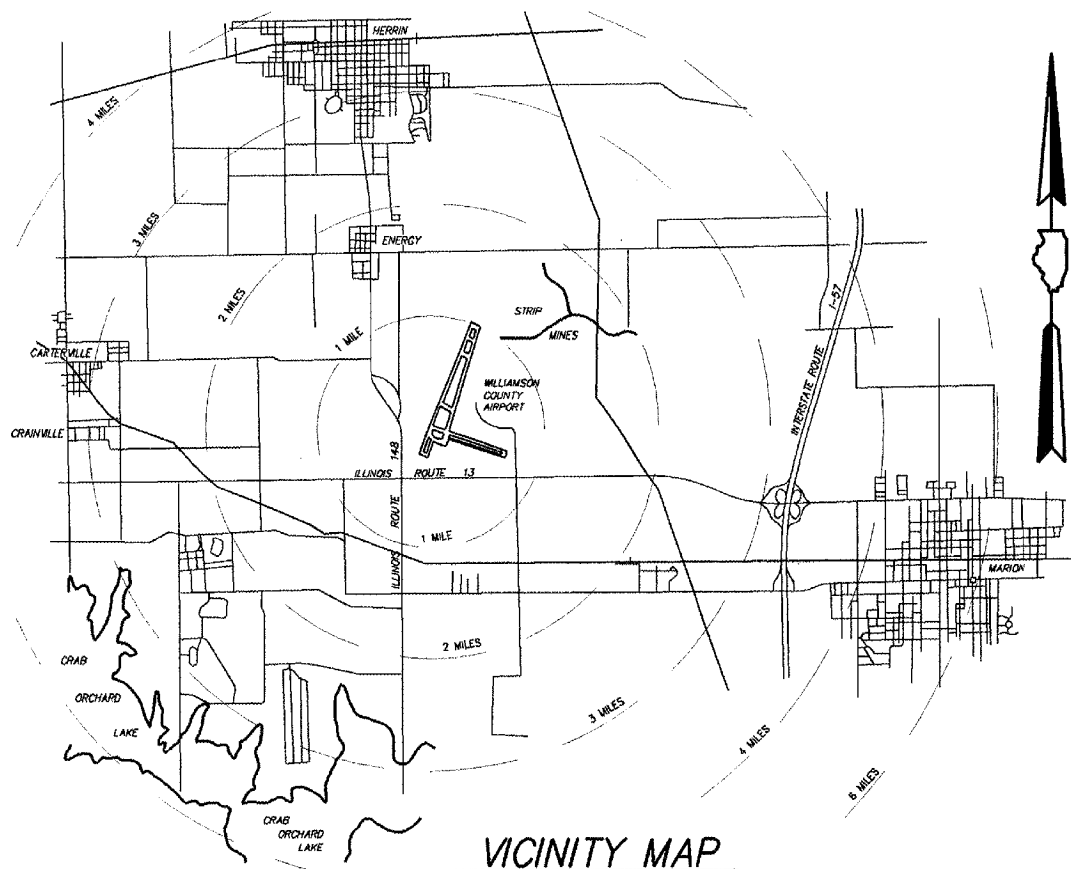
RECURRING SPECIAL PROVISIONS

The following RECURRING SPECIAL PROVISIONS indicated by an "X" are Applicable to this contract and are included by reference:

Check Sheet No.	Item No.		Page No.
1	AR101580	Refurbish 36" Beacon	155
2	AR106000	Apron Lighting	160
3	AR119000	Airport Obstruction Lighting (Not Included)	166
4	AR127000	Airport Navigaid Installation (Not Included)	167
X 5	AR160510	Engineer's Field Office	168
6	AR150560	Temporary Threshold	170
7	AR152540	Soil Stabilization Fabric	173
8	AR156000	Erosion Control	175
9	AR156513	Separation Fabric	180
10	AR156540	Riprap	182
11	AR201001	Bituminous Base Course - Method I	185
12	AR201002	Bituminous Base Course - Method II	193
13	AR201003	Bituminous Base Course - Method I, Superpave	209
14	AR201004	Bituminous Base Course - Method II, Superpave	217
15	AR201661	Clean & Seal Bituminous Cracks	230
16	AR201663	Sand Mix Crack Repair	233
17	AR201671	Crack Control Fabric	235
18	AR302000	Asphalt Treated Permeable Subbase	237
19	AR401001	Bituminous Surface Course - Method I	245
20	AR401002	Bituminous Surface Course - Method II	253
21	AR401003	Bituminous Surface Course - Method I, Superpave	269
22	AR401004	Bituminous Surface Course - Method II, Superpave	277
23	AR401640	Bituminous Pavement Grooving	290
24	AR401650	Bituminous Pavement Milling	293
25	AR401655	Butt Joint Construction	295
26	AR401800	Remove Bituminous Pavement	297
27	AR501001	Portland Cement Concrete - Pavement Method I	299
28	AR501002	Portland Cement Concrete - Pavement Method II	316
29	AR501003	Portland Cement Concrete - Pavement Method III	338
30	AR501115	Crack and Seal Pavement	362
31	AR501540	PCC Pavement Grooving	365
32	AR501550	PCC Pavement Milling	368
33	AR501900	Remove PCC Pavement	370
34	AR510500	Tie-down/Ground Rod	372
35	AR605000	Silicone Joint Sealing Filler	373

NOTE REGARDING SPECIAL PROVISIONS

THIS PROJECT HAS NO SPECIAL PROVISIONS. ALL WORK SHALL COMPLY WITH THE STANDARD SPECIFICATIONS FOR CONSTRUCTION ON AIRPORTS (JANUARY 1985) AS AMENDED BY THE SUPPLEMENTAL SPECIFICATIONS AND RECURRING SPECIAL PROVISIONS.



LATITUDE 37° 45' 15"
LONGITUDE 89° 00' 45"
ELEVATION 471.00

BOARD MEMBERS

CHAIRMAN : CARL PLANINC

MEMBERS : BERNARD A. PAUL
DARREN PULLEY
RICHARD PISONI

SECRETARY : CRAIG PILLATSCH

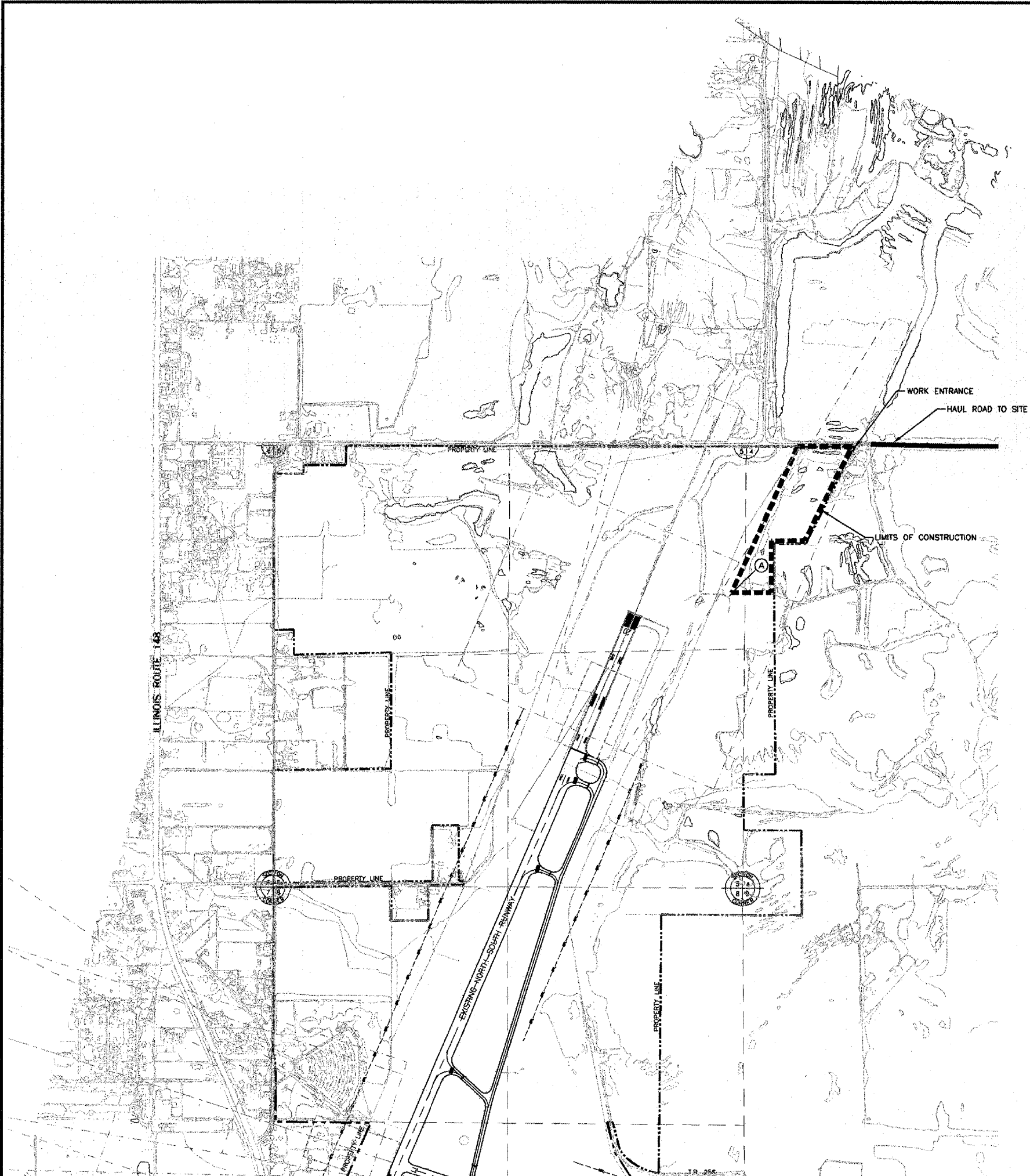
AIRPORT MANAGER : DOUGLAS KIMMEL



EXPIRES : NOVEMBER 30, 2007

PLANS PREPARED BY:

 CLARIDA & ZIEGLER ENGINEERING COMPANY P.O. Box 537, 308 South Court Street Marion, Illinois 62859	WILLIAMSON COUNTY AIRPORT AUTHORITY
REGISTERED PROFESSIONAL ENGINEER OF ILLINOIS NO. 24022 SUBMITTED: <i>H. Glenn Clarida</i> ENGINEER H. GLENN CLARIDA DATE: APRIL 16, 2007	APPROVED: <i>Carl Planinc</i> CHAIRMAN DATE: APRIL 16, 2007 APPROVED: <i>D. A. Paul</i> SECRETARY DATE: APRIL 16, 2007



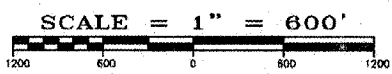
SCALE : 1" = 600'

GENERAL NOTES

1. THE CONTRACTOR SHALL WORK ONLY IN THE LIMITS SHOWN ON THE PLAN.
2. HEIGHT OF EQUIPMENT SHALL NOT BE OVER 25' IN HEIGHT.
3. EROSION CONTROL - THIS PROJECT WILL DISTURB MORE THAN 1 ACRE, A STORM WATER POLLUTION PREVENTION PLAN WILL BE REQUIRED AND A N.P.D.E.S. PERMIT WILL BE REQUIRED.
4. THE CONTRACTOR SHALL BE RESPONSIBLE FOR CONTACTING ALL UTILITY COMPANIES THAT HAVE LINES IN THE AREA AND CALLING J.U.L.I.E. (1-800-892-0123) FOR UTILITY LOCATING.

POINT SCHEDULE

POINT No.	LONGITUDE	LATITUDE	ELEVATION
(A)	89°00'13.0"	37°46'09.4"	463.47

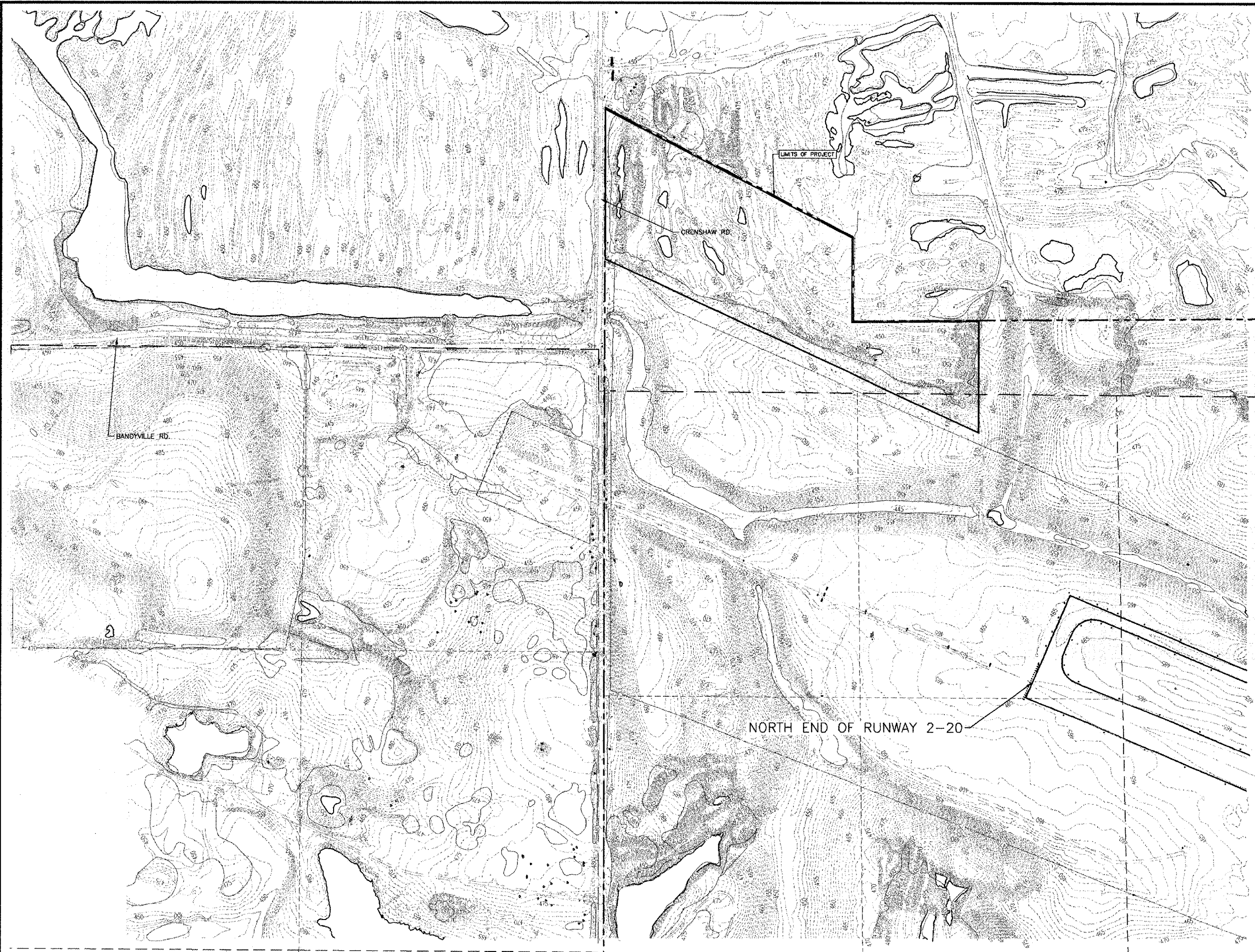


ILLINOIS PROJECT NO. MWA-????
A.I.P. PROJECT NO. ?-?-????-XX

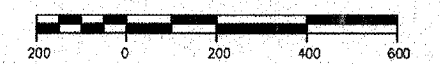
STATE OF ILLINOIS PROFESSIONAL DESIGN FIRM LICENSE NO. 184-000872		
© 2007 ALL RIGHTS RESERVED		
REVISIONS	<p>CLARIDA & ZIEGLER ENGINEERING CO. 308 South Court St., P.O. Box 937 Marion, Illinois 62959 Phone - (618)993-6411, Fax - (618)993-6750</p>	
DATE		NO.
<p>SAFETY PLAN OBSTRUCTION REMOVAL, CLEARING AND GRADING WILLIAMSON COUNTY REGIONAL AIRPORT MARION-HERRIN, ILLINOIS</p>		
Date	02/25/2007	
DR. By	P.L.D.	
CK'D By	CM	

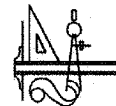
LETTING CONTRACT NUMBER

WI051

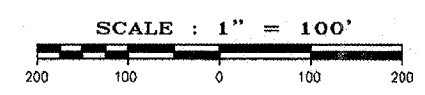



SCALE : 1" = 200'



STATE OF ILLINOIS PROFESSIONAL DESIGN FIRM LICENSE NO. 184-000872	
© 2007 ALL RIGHTS RESERVED	
 CLARIDA & ZIEGLER ENGINEERING CO.	
308 South Court St, P.O. Box 937 Marion, Illinois 62959	
Phone - (618)993-6411, Fax - (618)993-6750	
LOCATION OF OBSTRUCTIONS OBSTRUCTION REMOVAL, CLEARING AND GRADING WILLIAMSON COUNTY REGIONAL AIRPORT MARION-HERRIN, ILLINOIS	
Date	02/26/2007
DR. By	P.L.D.
CKD By	CM

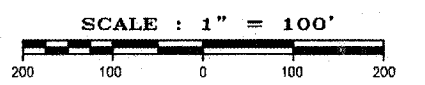
LETTING CONTRACT NUMBER
W1051




STATE OF ILLINOIS PROFESSIONAL DESIGN FIRM LICENSE NO. 184-000872		 <p>CLARIDA & ZIEGLER ENGINEERING CO. 308 South Court St, P.O. Box 937 Marion, Illinois 62959 Phone - (618)993-6411, Fax - (618)993-6750</p>
© 2007 ALL RIGHTS RESERVED		
<p>EROSION & SEDIMENT CONTROL PLAN OBSTRUCTION REMOVAL, CLEARING AND GRADING WILLIAMSON COUNTY REGIONAL AIRPORT MARION-HERRIN, ILLINOIS</p>		
Date	02/25/2007	DR. By P.L.D.
		CK'D By CM

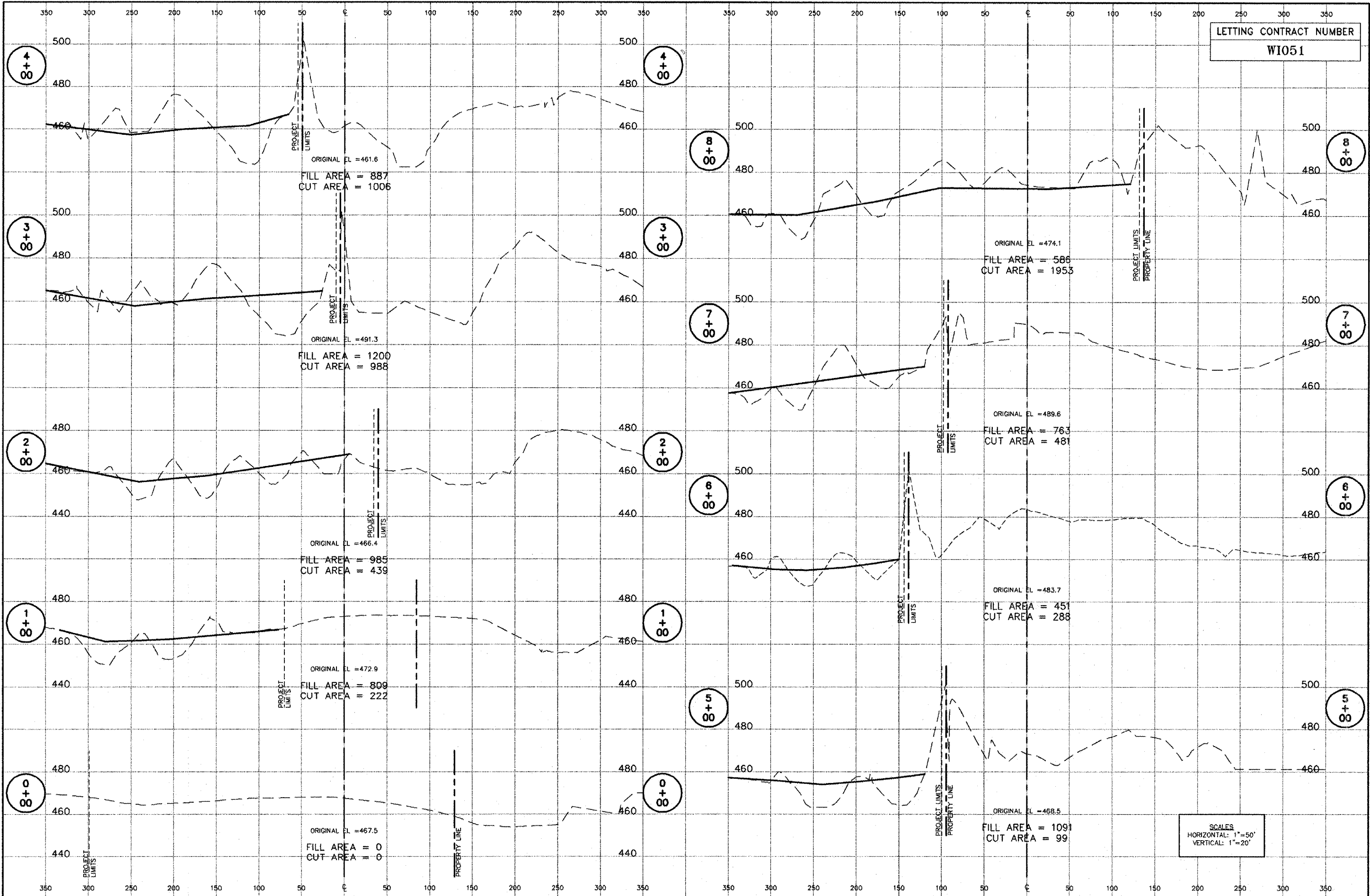


NOTE:
 COMPACTION REQUIREMENTS ARE THREE PASSES WITH
 EARTHMOVING EQUIPMENT.



STATE OF ILLINOIS PROFESSIONAL DESIGN FIRM LICENSE NO. 184-000872	
© 2007 ALL RIGHTS RESERVED	
 CLARIDA & ZIEGLER ENGINEERING CO. 308 South Court St, P.O. Box 937 Marion, Illinois 62959 Phone - (618)993-6411, Fax - (618)993-6750	
BASELINE FOR EARTH WORK OBSTRUCTION REMOVAL, CLEARING AND GRADING WILLIAMSON COUNTY REGIONAL AIRPORT MARION-HERRIN, ILLINOIS	
Date	02/25/2007
DR. By	P.L.D.
CKD By	CM
Scale	1"=100'
Job No.	06153
Sheet No.	9

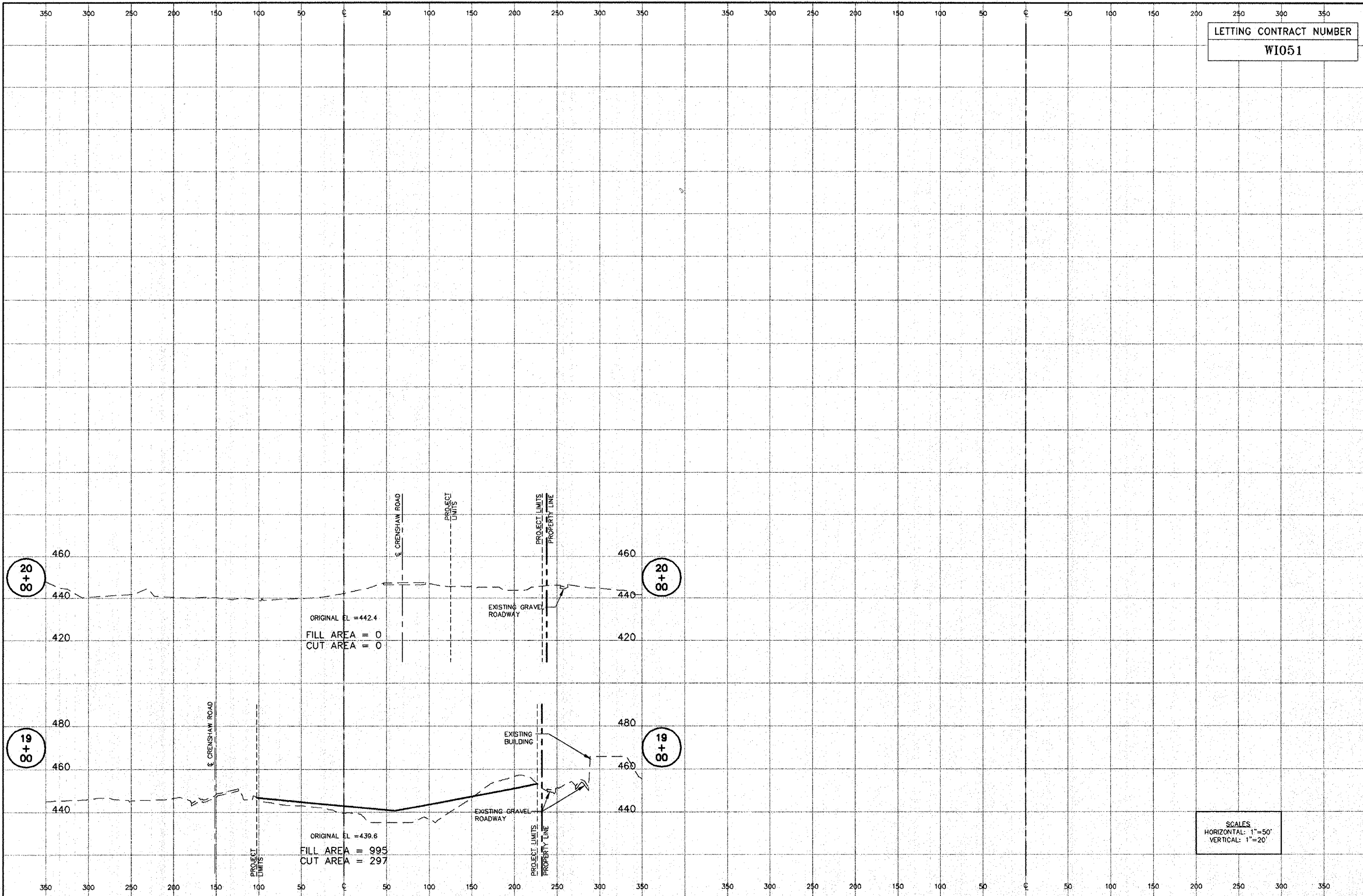
LETTING CONTRACT NUMBER
W1051



SCALES
HORIZONTAL: 1"=50'
VERTICAL: 1"=20'

CLEARING FOR AVIGATION EASEMENT - NORTHEAST CORNER OF AIRPORT 0+00 TO 8+00

LETTING CONTRACT NUMBER
WI051



CLEARING FOR AVIGATION EASEMENT - NORTHEAST CORNER OF AIRPORT 19+00 TO 20+00