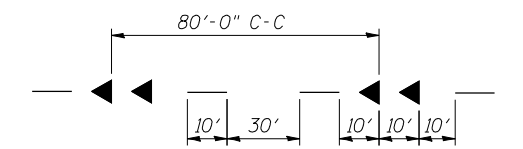
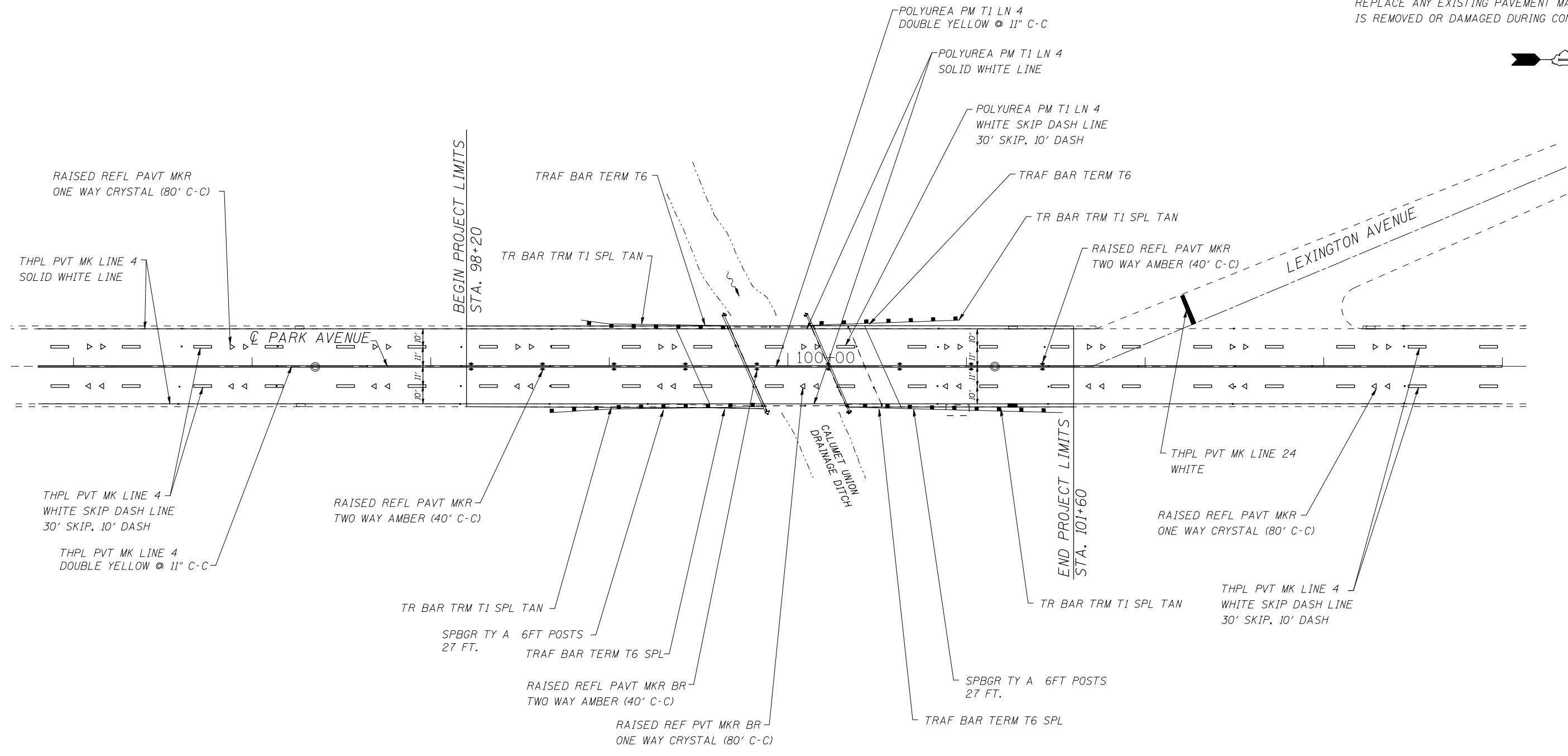
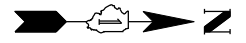
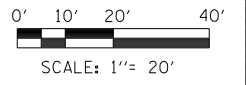


**NOTE:**  
 REPLACE ANY EXISTING PAVEMENT MARKING THAT IS REMOVED OR DAMAGED DURING CONSTRUCTION.



**LANE PAVEMENT MARKER DETAIL**  
 SEE STATE STANDARD NO. 780001  
 SEE DISTRICT STANDARD NO. TC-11



**LONCO, INC.**  
 CONSULTING ENGINEERS  
 1560 WALL ST., SUITE 222  
 NAPERVILLE, ILLINOIS 60563 PH: (630) 577-9100

DESIGNED - ST	REVISED -
DRAWN - ST	REVISED -
CHECKED - MJY, SLV	REVISED -
DATE - 03/29/2012	REVISED -

**STATE OF ILLINOIS  
 DEPARTMENT OF TRANSPORTATION**

**PAVEMENT MARKING PLAN  
 PARK AVENUE OVER CALUMET UNION DRAINAGE DITCH**

SCALE: 1" = 20'    SHEET NO. 1 OF 1 SHEETS    STA. 98+20 TO STA. 101+60

F.A.P. RTE.	SECTION	COUNTY	TOTAL SHEETS	SHEET NO.
3597	0710 B	COOK	30	8
D-91-292-09		CONTRACT NO. 60F95		
FED. ROAD DIST. NO.	ILLINOIS FED. AID PROJECT			