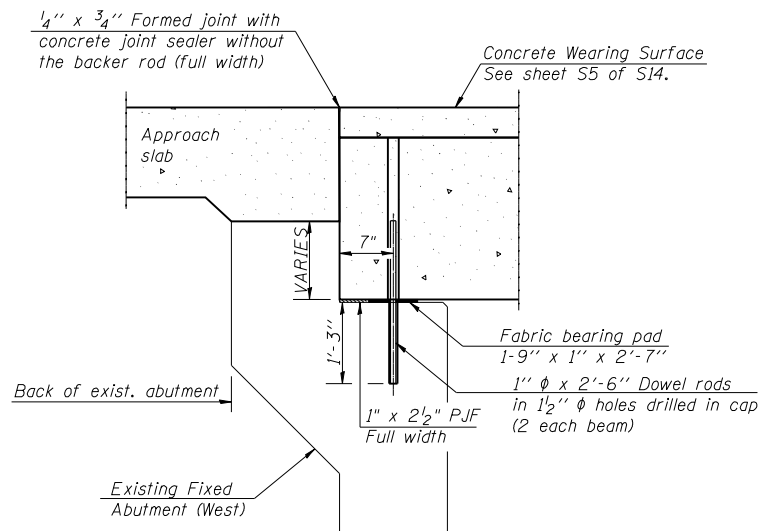


SECTION THRU EXPANSION ABUTMENT

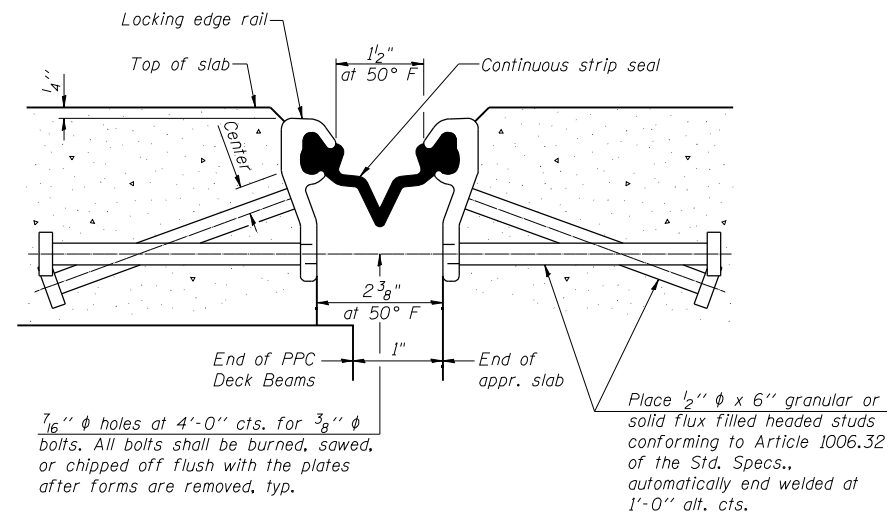
Notes:
 All horizontal dimensions are at right angles to beam ends.
 Hatched area to be poured after concrete wearing surface is in place.
 See sheet S12 of S14 for bearing pad details.



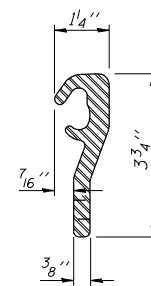
SECTION THRU FIXED ABUTMENT

Notes:
 After beams have been erected, holes shall be drilled into substructure and anchor dowels placed. Dowel holes shall be filled with non-shrink grout to top of beam and allowed to cure min. 24 hrs. prior to grouting the shear keys.
 All horizontal dimensions are at right angles to beam ends.
 See sheet S12 of S14 for bearing pad details.

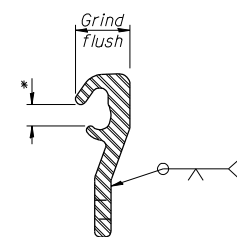
*Omit weld at seal opening.



SECTION THRU STRIP SEAL JOINT FOR OVERLAY OVER DECK BEAMS

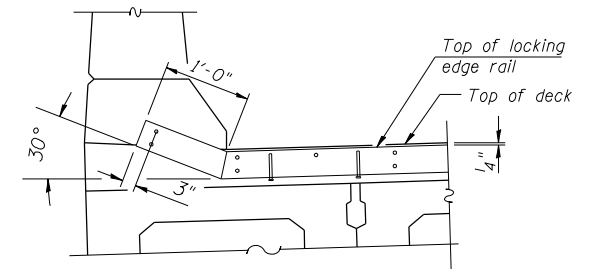


LOCKING EDGE RAIL



LOCKING EDGE RAIL SPLICE

Notes:
 The strip seal shall be made continuous and shall have a minimum thickness of 1/4". The configuration of the strip seal shall match the configuration of the Locking Edge Rails.
 The height and thickness of the Locking Edge Rails shown are minimum dimensions. The actual configuration of the Locking Edge Rails and matching strip seal may vary from manufacturer to manufacturer. Flanged edge rails will not be allowed.
 The inside of the Locking Edge Rail groove shall be free of weld residue.
 Locking Edge Rails may be spliced at slope discontinuities and stage construction joints.
 The manufacturer's recommended installation methods shall be followed.



STRIP SEAL DETAILS AT PARAPET