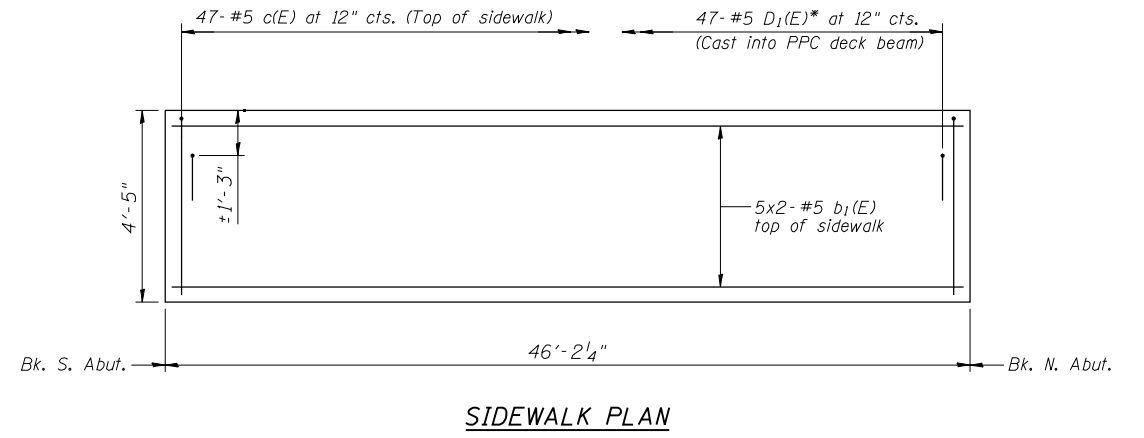


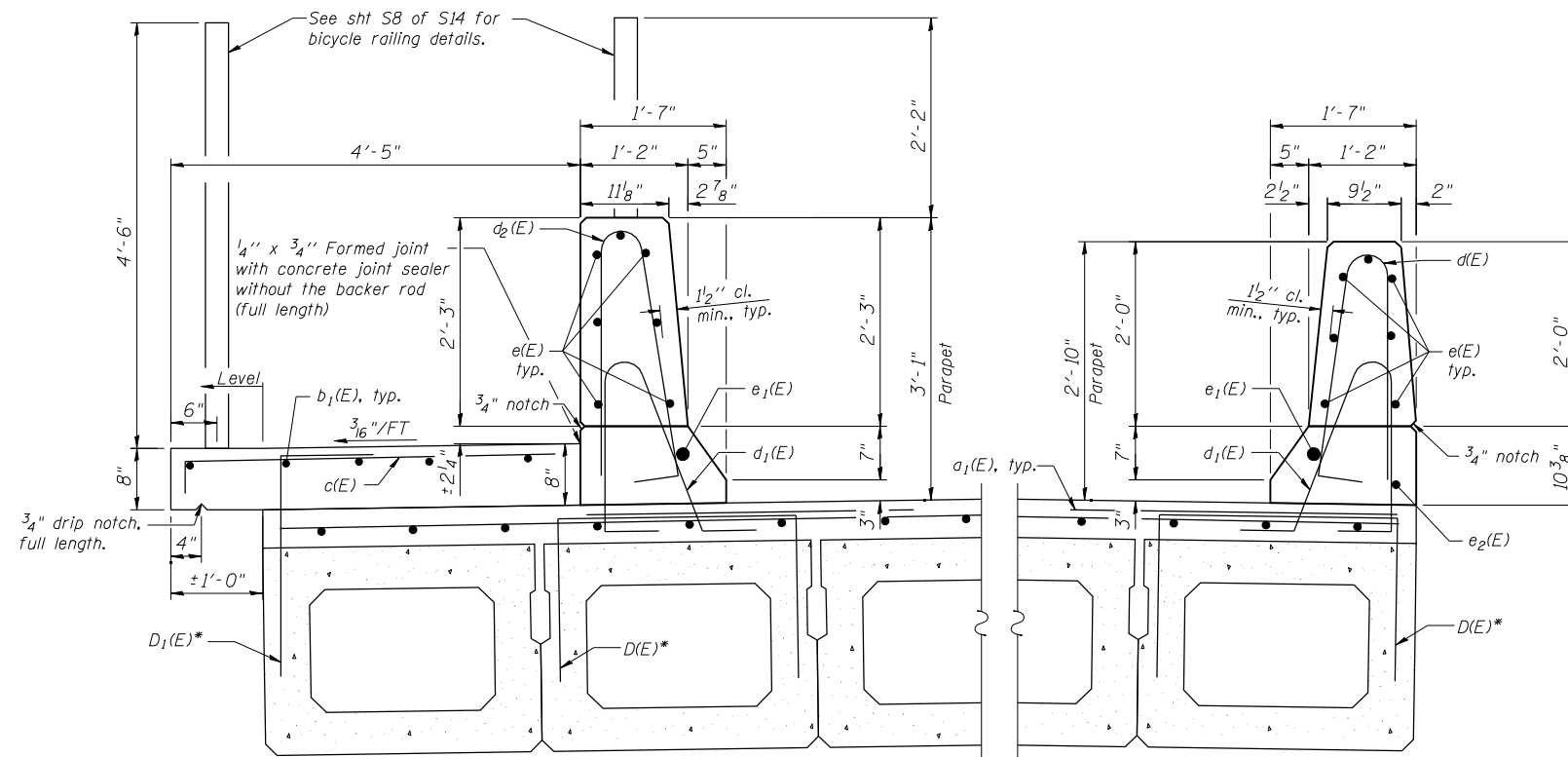
INSIDE PARAPET ELEVATION



SIDEWALK PLAN

MIN. BAR LAP

Min bar lap: #4 = 2'-1"
 Min bar lap: #5 = 2'-7"



WEST PARAPET

EAST PARAPET

NOTE:
 The West parapet front face has the same slope as the East parapet front face.

*See sht. S11 of S14 for D(E) and D₁(E) bar details cast into PPC Deck Beams.

NOTES

See Concrete wearing Surface Plan on sht. S5 of S14 for deck reinforcement and Bill of Material.
 Bars indicated thus 1x2-#5, etc, indicates 1 line of bars with 2 lengths per line.
 See sht. S10 of S14 for parapet joint details.

DESIGNED -	SLV	REVISED -	
CHECKED -	MJM	REVISED -	
DRAWN -	SLV	REVISED -	
CHECKED -	MJM	REVISED -	

F.A.U. RTE.	SECTION	COUNTY	TOTAL SHEETS	SHEET NO.
3597	0710 B	COOK	30	16
D-91-292-09		CONTRACT NO. 60F95		
ILLINOIS FED. AID PROJECT				