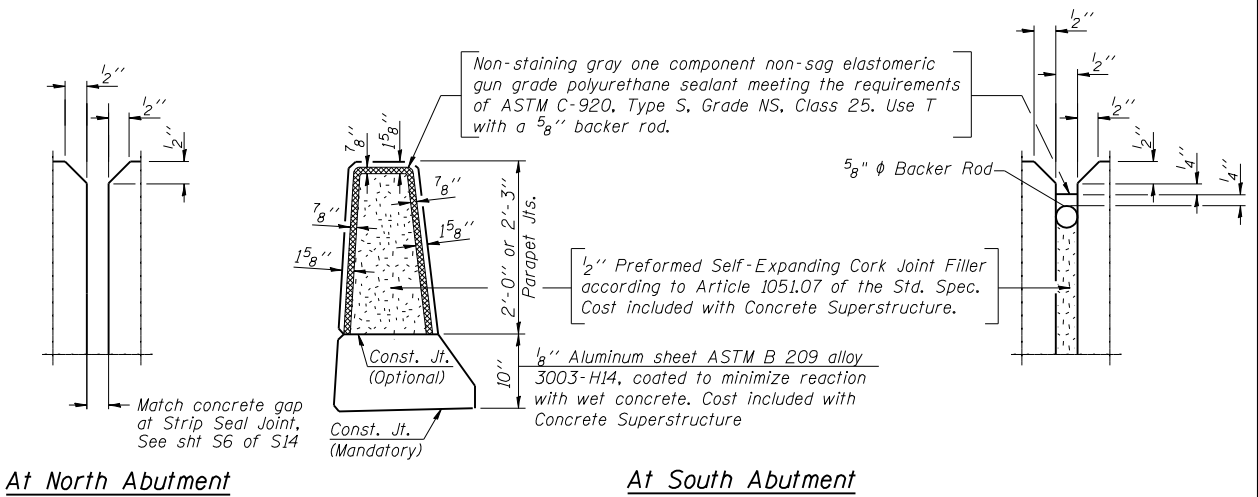


Notes:
 See sheet S9 of S14 for Detail A, View B-B and Section F-F.
 Approach slab and parapet concrete shall be paid for as Concrete Superstructure.
 Approach footing concrete shall be paid for as Concrete Structures.
 Reinforcement shall be paid for as Reinforcement Bars, Epoxy Coated.
 For v(E) bar details, see sheet S13 & S14 of S14.
 The approach footing maximum applied service bearing pressure (Qmax) = 2.0 ksf.
 Cost of excavation for approach footing included with Concrete Structures.

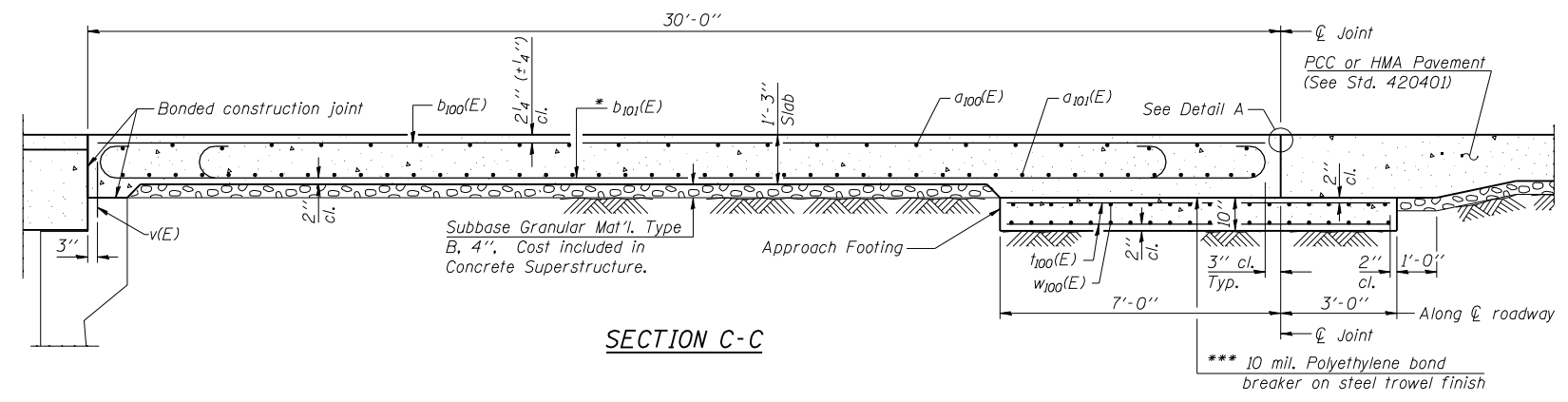
- * Tilt #9 b₁₀₁(E) bars as required to maintain clearance.
- ** Parapet varies in height on west side only.
- *** Cost included with Concrete Superstructure.



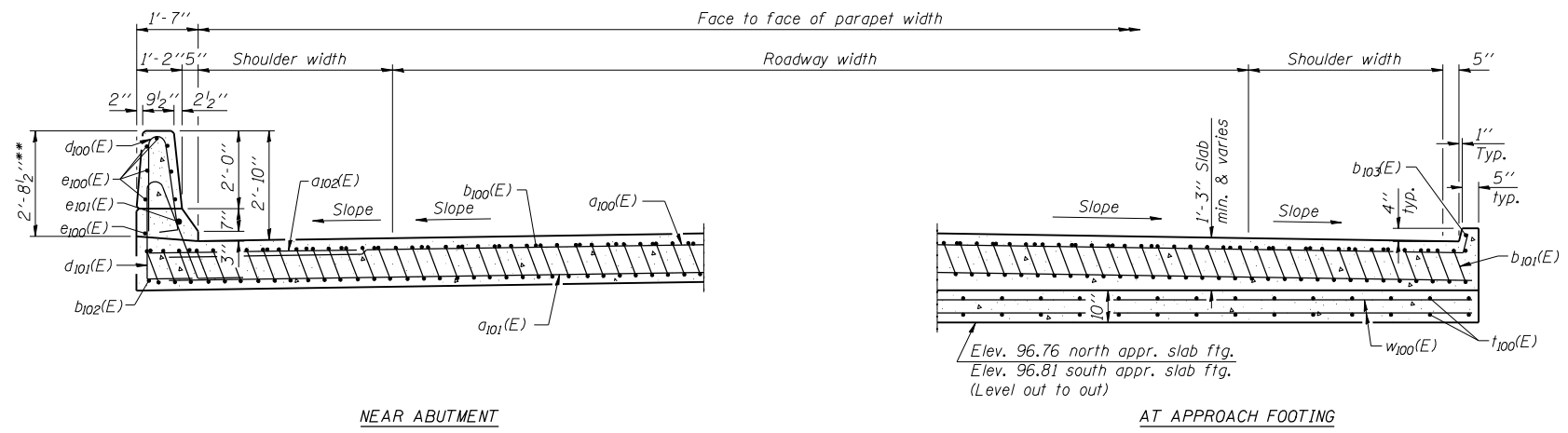
PARAPET JOINT DETAILS

**TWO APPROACHES
BILL OF MATERIAL**

Bar	No.	Size	Length	Shape	
a ₁₀₀ (E)	100	#4	26'-8"	—	
a ₁₀₁ (E)	184	#5	26'-6"	—	
a ₁₀₂ (E)	48	#6	6'-6"	—	
b ₁₀₀ (E)	90	#4	29'-8"	—	
b ₁₀₁ (E)	218	#9	29'-9"	—	
b ₁₀₂ (E)	4	#4	14'-8"	—	
b ₁₀₃ (E)	4	#4	14'-6"	—	
d ₁₀₀ (E)	68	#5	5'-7"	—	
d ₁₀₁ (E)	68	#5	7'-11"	—	
e ₁₀₀ (E)	32	#4	14'-8"	—	
e ₁₀₁ (E)	4	#8	14'-8"	—	
t ₁₀₀ (E)	188	#4	9'-6"	—	
w ₁₀₀ (E)	160	#5	26'-6"	—	
Concrete Superstructure				Cu. Yd.	138.0
Concrete Structures				Cu. Yd.	28.5
Reinforcement Bars, Epoxy Coated				Pound	38290

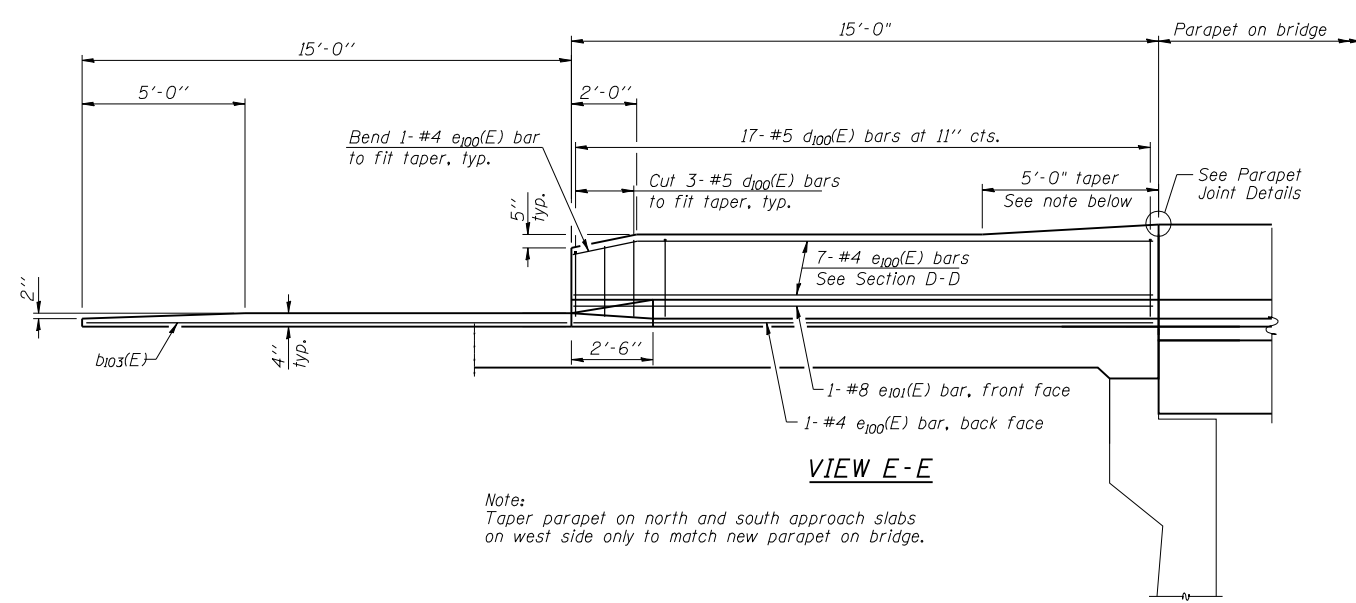


SECTION C-C

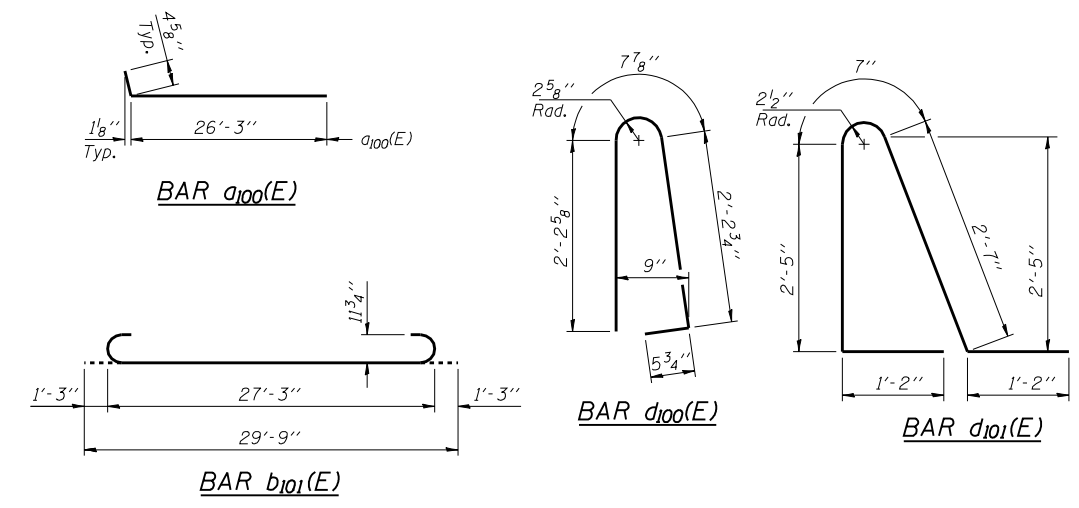


SECTION D-D

(See Plan for dimensions not shown)



VIEW E-E



LOCO, INC.
 CONSULTING ENGINEERS
 1560 WALL ST, SUITE 222
 NAPERVILLE, ILLINOIS 60563 PH: (630) 577-9100

DESIGNED - SLV	REVISED -
CHECKED - MJM	REVISED -
DRAWN - SLV	REVISED -
CHECKED - MJM	REVISED -

**STATE OF ILLINOIS
DEPARTMENT OF TRANSPORTATION**

**BRIDGE APPROACH SLAB DETAILS (2 of 2)
STRUCTURE NO. 016-0771**

SHEET NO. S10 OF S14 SHEETS

F.A.U. RTE.	SECTION	COUNTY	TOTAL SHEETS	SHEET NO.
3597	0710 B	COOK	30	19
D-91-292-09		CONTRACT NO. 60F95		
ILLINOIS FED. AID PROJECT				