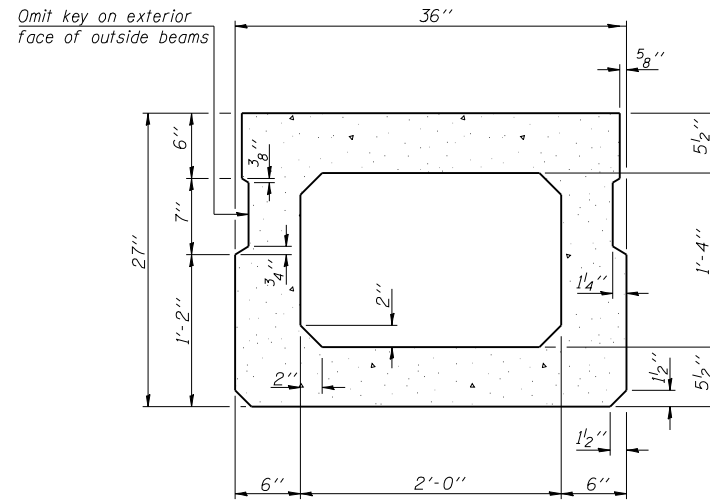
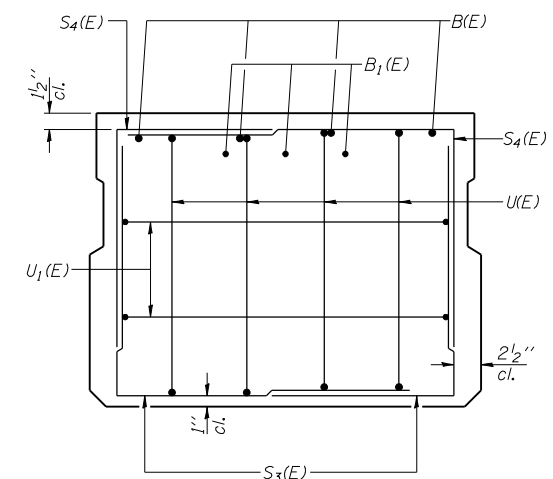


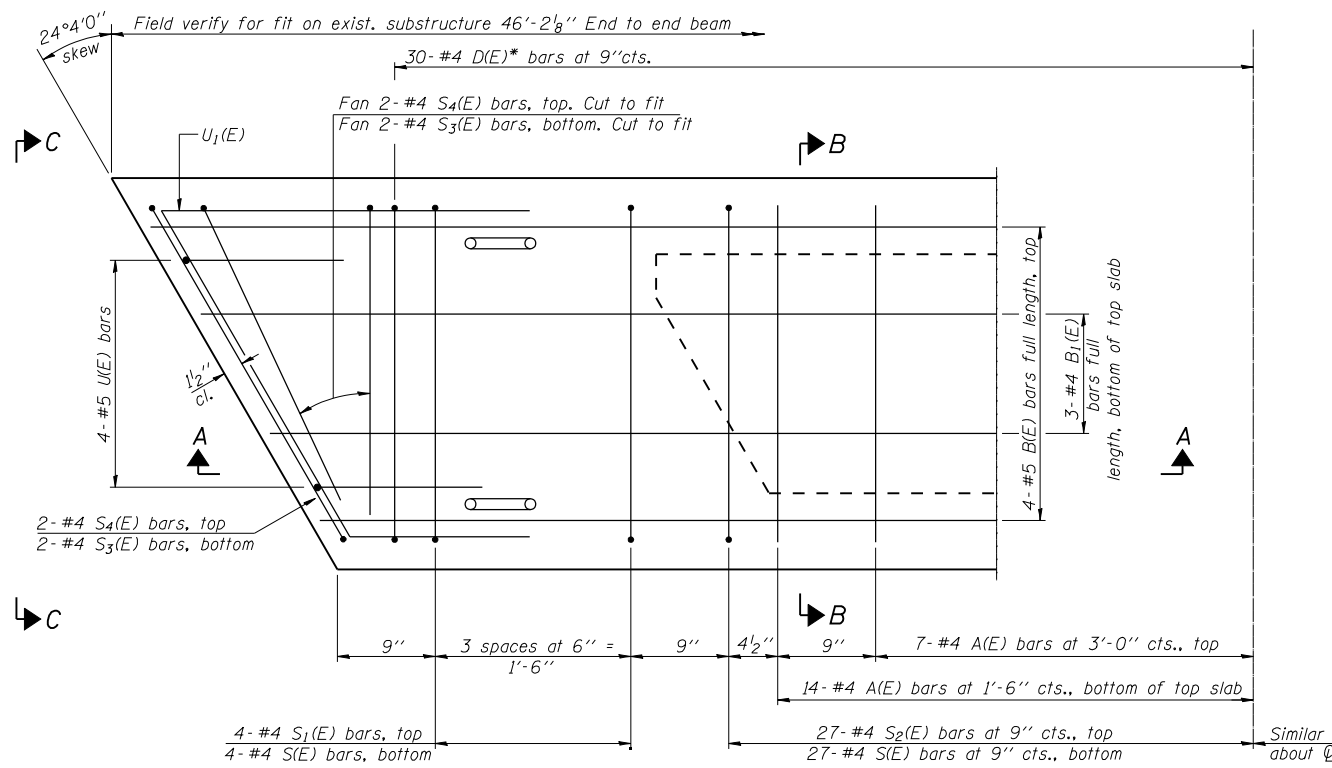
SECTION A-A



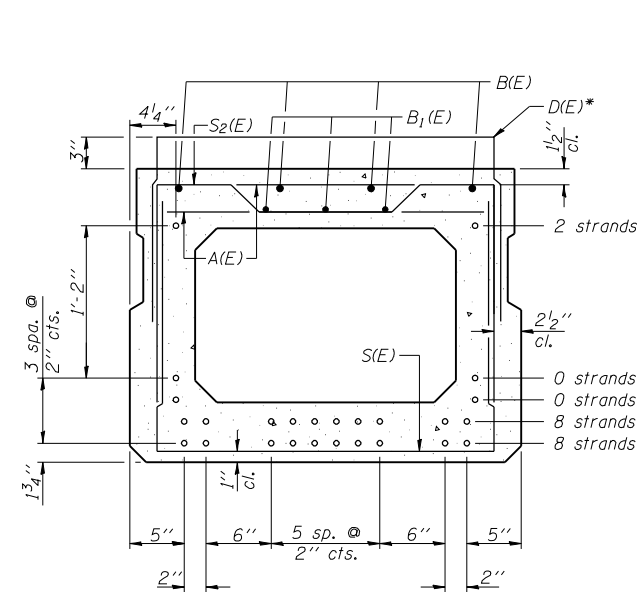
SECTION B-B
(Showing dimensions)



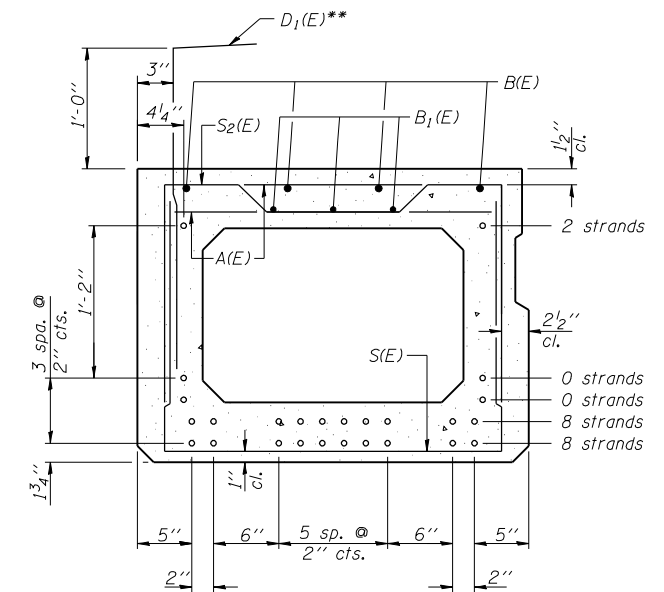
VIEW C-C



PLAN VIEW



SECTION A-A
(Showing reinforcement and permissible strand locations)



SECTION A-A
(Showing reinforcement and permissible strand locations)

Note: Place the number of strands specified in each row symmetrically about the centerline of beam in the permissible strand locations shown.

* Bar D(E) for beams 2 and 17 only. See sht. S7 of S14 for Section Thru East & West Parapets.
** Bar D1(E) for west exterior beam only. See sht. S7 of S14 for Section Thru East Parapet.

MINIMUM BAR LAP

#4 bar = 2'-0"
#5 bar = 2'-6"

Note: Spacing of D(E), D1(E), S(E) and S2(E) bars may be adjusted up to 4" in the immediate area of the transverse tie diaphragms to miss the block outs for the transverse ties.

BAR LIST
ONE BEAM ONLY

(For information only)

Bar	No.	Size	Length	Shape
A(E)	42	#4	2'-7"	—
B(E)	4	#5	45'-9"	—
B1(E)	3	#4	45'-9"	—
*D(E)	30	#4	5'-10"	┌
**D1(E)	47	#4	3'-6"	┌
S(E)	62	#4	6'-5"	┌
S1(E)	8	#4	5'-11"	┌
S2(E)	54	#4	6'-2"	┌
S3(E)	8	#4	4'-4"	┌
S4(E)	8	#4	4'-1"	┌
U(E)	8	#5	4'-6"	┌
U1(E)	4	#4	6'-4"	┌

Note: See sheet S12 of S14 for additional details and Bill of Material.