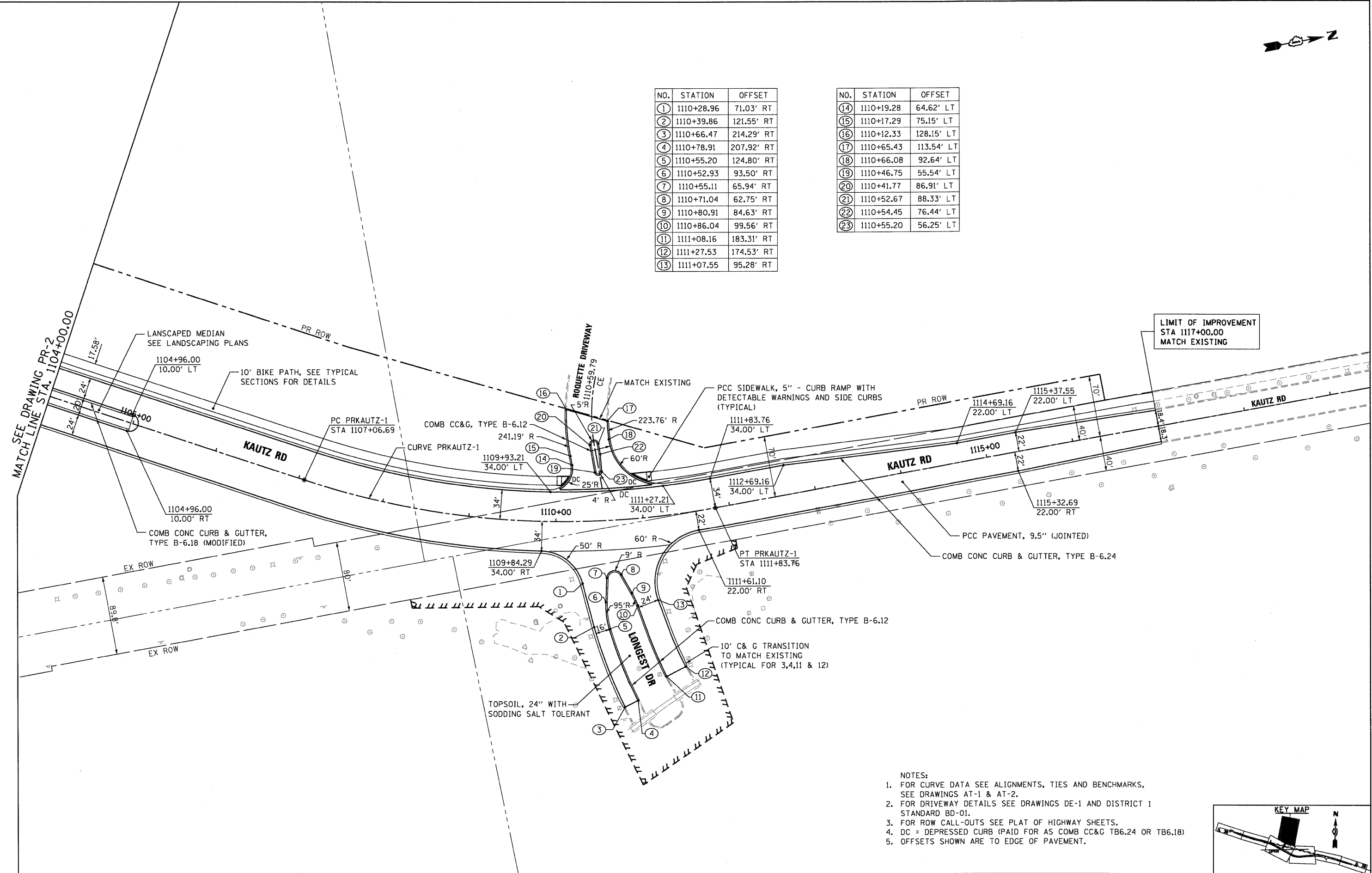




NO.	STATION	OFFSET
1	1110+28.96	71.03' RT
2	1110+39.86	121.55' RT
3	1110+66.47	214.29' RT
4	1110+78.91	207.92' RT
5	1110+55.20	124.80' RT
6	1110+52.93	93.50' RT
7	1110+55.11	65.94' RT
8	1110+71.04	62.75' RT
9	1110+80.91	84.63' RT
10	1110+86.04	99.56' RT
11	1111+08.16	183.31' RT
12	1111+27.53	174.53' RT
13	1111+07.55	95.28' RT

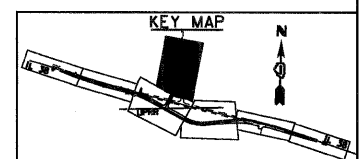
NO.	STATION	OFFSET
14	1110+19.28	64.62' LT
15	1110+17.29	75.15' LT
16	1110+12.33	128.15' LT
17	1110+65.43	113.54' LT
18	1110+66.08	92.64' LT
19	1110+46.75	55.54' LT
20	1110+41.77	86.91' LT
21	1110+52.67	88.33' LT
22	1110+54.45	76.44' LT
23	1110+55.20	56.25' LT



LIMIT OF IMPROVEMENT  
STA 1117+00.00  
MATCH EXISTING

SEE DRAWING PR-2  
MATCH LINE STA. 1104+00.00

- NOTES:
- FOR CURVE DATA SEE ALIGNMENTS, TIES AND BENCHMARKS, SEE DRAWINGS AT-1 & AT-2.
  - FOR DRIVEWAY DETAILS SEE DRAWINGS DE-1 AND DISTRICT 1 STANDARD BD-01.
  - FOR ROW CALL-OUTS SEE PLAT OF HIGHWAY SHEETS.
  - DC = DEPRESSED CURB (PAID FOR AS COMB CC&G TB6.24 OR TB6.18)
  - OFFSETS SHOWN ARE TO EDGE OF PAVEMENT.



McDonough Associates Inc.  
Engineers/Architects  
130 East Randolph Street, Chicago, Illinois 60601

FILE NAME = D:\68122-SHT-PLAN95.dgn	USER NAME = YKsm	DESIGNED - JTF	REVISED -
		DRAWN - JTF	REVISED -
		CHECKED - EJG	REVISED -
		DATE - 10/14/11	REVISED -

**STATE OF ILLINOIS  
DEPARTMENT OF TRANSPORTATION**

**KAUTZ ROAD PROPOSED PLAN**

SCALE: 1"=50' SHEET NO. 1 OF 1 SHEETS STA. 1104+00 TO STA. END

F.A.P. RTE. 347	SECTION LY (HB & VB)	COUNTY DUPAGE/KANE	TOTAL SHEETS 421	SHEET NO. 35
PR-5		CONTRACT NO. 60122		
FED. ROAD DIST. NO. 1 ILLINOIS FED. AID PROJECT				