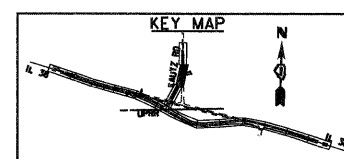
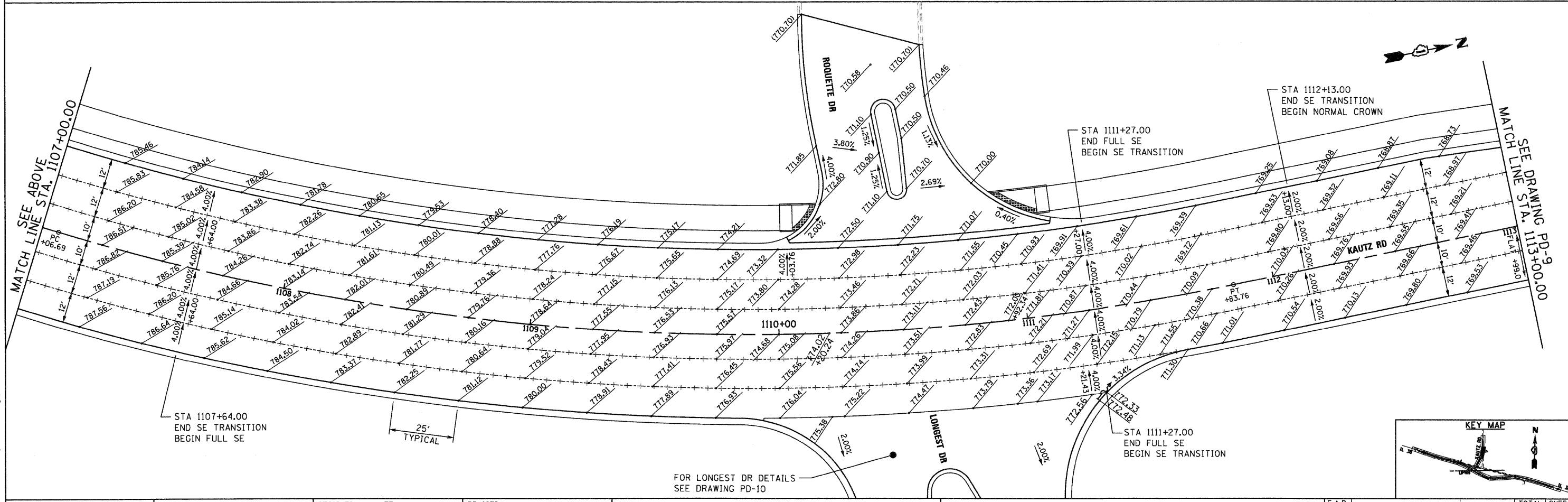
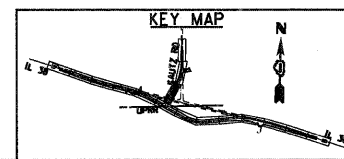


NOTES

- ELEVATIONS ARE SHOWN AT 25' INTERVALS AND ARE FOR INFORMATION ONLY. THE CONTRACTOR SHALL VERIFY ALL ELEVATIONS PRIOR TO CONSTRUCTION.
- TRANSVERSE CONTRACTION JOINTS ARE TYPICALLY SPACED AT 15'. REFER TO IDOT STANDARDS 420001, 420101, 420106, 420201 AND 420401 FOR JOINT DETAILS AND SPACING.



McDonough Associates Inc.
 Engineers / Architects
 130 East Randolph Street Chicago, Illinois 60601

FILE NAME = D:\68122-SHT-PAVEMENT-DETAILS\08.dgn
 USER NAME = E-r10G
 PLOT SCALE = 1/2"=1'
 PLOT DATE = 12/9/2011

DESIGNED - JTF
 DRAWN - JTF
 CHECKED - E.JG
 DATE - 12/09/11

REVISED -
 REVISED -
 REVISED -
 REVISED -

STATE OF ILLINOIS
DEPARTMENT OF TRANSPORTATION

KAUTZ ROAD PAVEMENT DETAILS

SCALE: 1"=20' SHEET NO. 1 OF 2 SHEETS STA. 1101+00 TO STA. 1113+00

F.A.P. RTE.	SECTION	COUNTY	TOTAL SHEETS	SHEET NO.
347	LY (HB & VB)	DUPAGE/KANE	421	122
PD-8			CONTRACT NO. 60122	
FED. ROAD DIST. NO. 1 ILLINOIS FED. AID PROJECT				