

**EXISTING LEGEND**

- (A) EXISTING TOPSOIL
- (B) EXISTING AGGREGATE SHOULDER
- (C) EXISTING BITUMINOUS CONCRETE SHOULDERS (9 IN.)
- (D) EXISTING AGGREGATE SUB-GRADE, 12"
- (Da) 3" CA-6 AGGREGATE CAP (THICKNESS VARIES UNDER SHOULDER)
- (Db) 9" PGE
- (E) EXISTING PIPE UNDERDRAINS
- (F) EXISTING CONCRETE BARRIER, DOUBLE FACE, 42 INCH
- (G) EXISTING CONCRETE BARRIER, BASE
- (H) EXISTING BITUMINOUS CONCRETE SHOULDERS (6 IN.)
- (I) EXISTING STABILIZED SUB-BASE, 3 IN.
- (J) EXISTING PORTLAND CEMENT CONCRETE PAVEMENT 12" (JOINTED)
- (K) EXISTING CONCRETE BARRIER BASE, VARIABLE HEIGHT
- (L) EXISTING CONCRETE BARRIER, DOUBLE FACE, VARIABLE HEIGHT
- (M) EXISTING CONCRETE GUTTER (SPECIAL)
- (N) EXISTING PCC PAVEMENT, 10"
- (O) EXISTING BITUMINOUS CONCRETE OVERLAY, 4"
- (P) EXISTING BITUMINOUS CONCRETE SHOULDERS 13"
- (Q) EXISTING PERMANENT SHEET PILING
- (R) EXISTING CONCRETE RETAINING WALL
- (S) EXISTING CONCRETE STRUCTURES MOMENT SLAB
- (T) EXISTING CONCRETE BARRIER, 42"
- (U) EXISTING GUTTER, TYPE G-3
- (V) EXISTING PCC PAVEMENT, 12" DOWELED

**PROPOSED LEGEND**

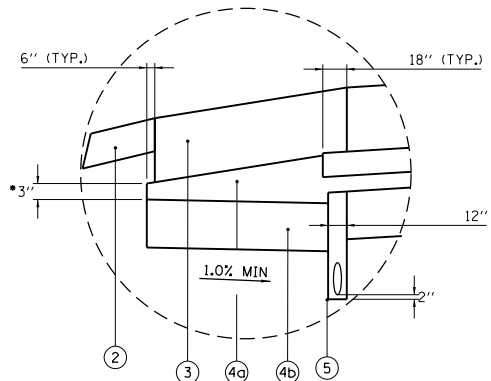
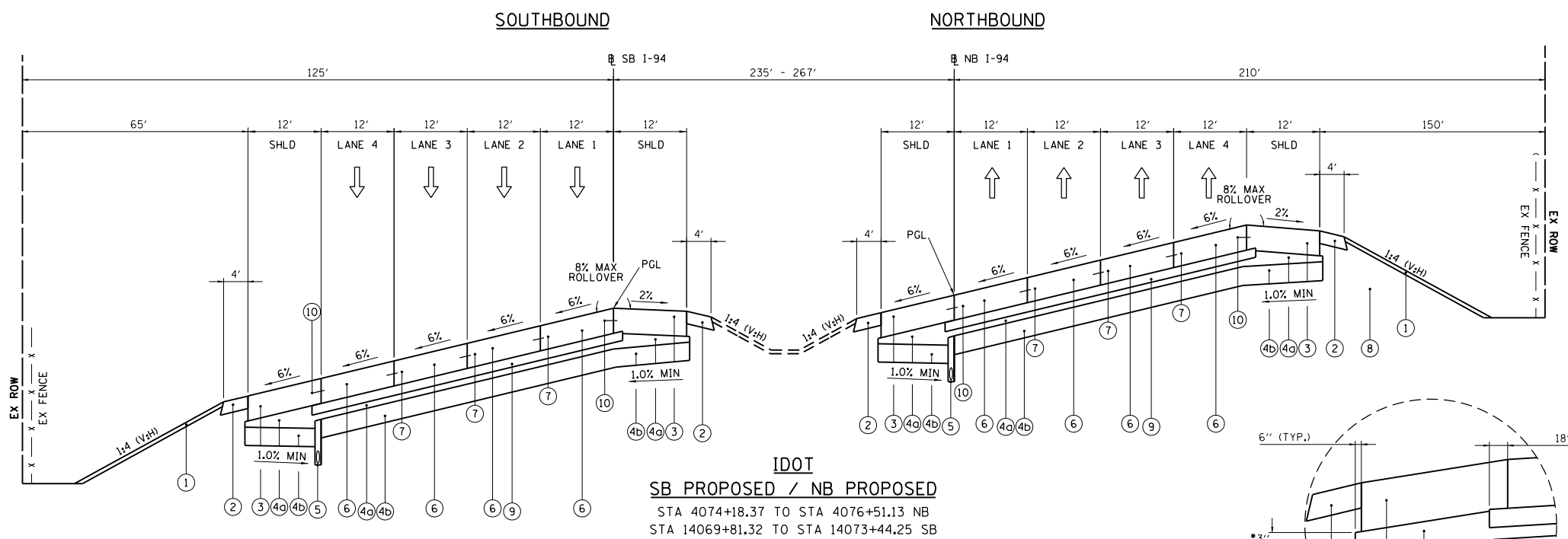
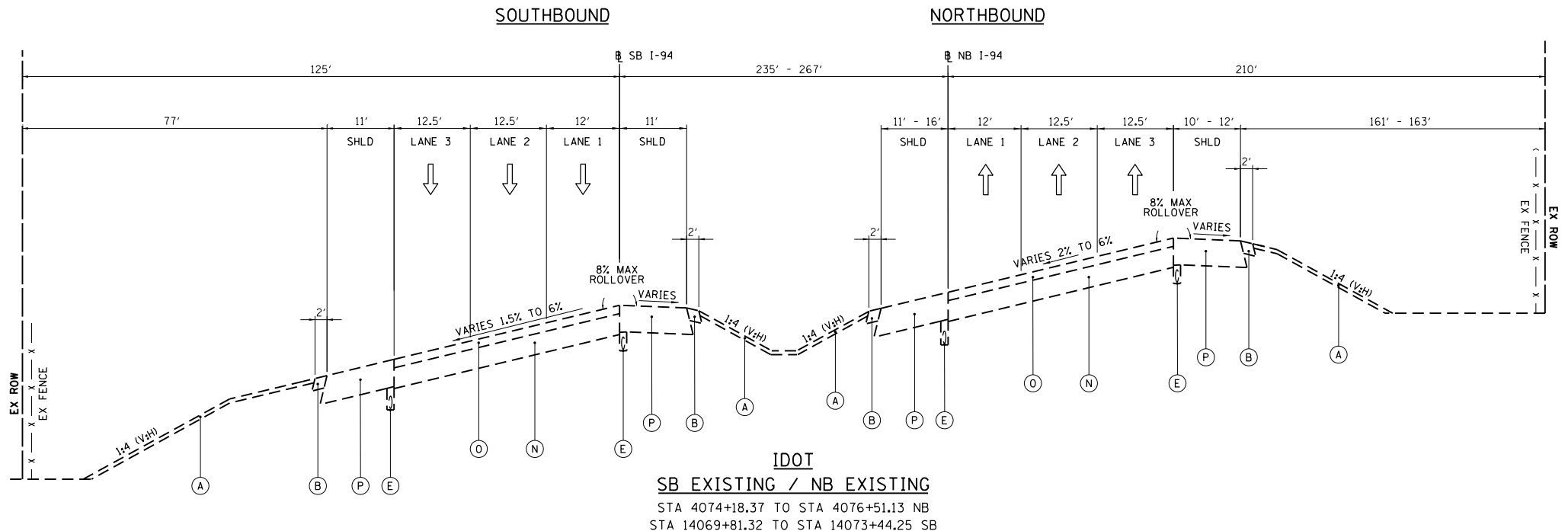
- (1) TOPSOIL EXCAVATION AND PLACEMENT (21101505) (4")
- (2) AGGREGATE SHOULDERS, TYPE B 6" (48101500)
- (3) PORTLAND CEMENT CONCRETE SHOULDERS 12" (48300700)
- (4) AGGREGATE SUBGRADE IMPROVEMENT 12" (30300112)
- (4a) 3" CA-6 AGGREGATE CAP (THICKNESS VARIES UNDER SHOULDER)
- (4b) 9" PGE
- (5) PIPE UNDERDRAINS 6" (60107700) (SEE IDOT STANDARD 601001-04)
- (6) PORTLAND CEMENT CONCRETE PAVEMENT 12" (JOINTED) (42000541)
- (7) LONGITUDINAL SAWED OR CONSTRUCTION JOINT.  
FOR LONGITUDINAL SAWED JOINT, POUR IN PLACE NO. 6 DEFORMED EPOXY TIE BARS 30" LONG AT 30" C-C. FOR LONGITUDINAL CONSTRUCTION JOINT, DRILL AND GROUT NO. 6 DEFORMED EPOXY TIE BARS 24" LONG AT 24" C-C. (SHALL BE INCLUDED IN THE COST OF PORTLAND CEMENT CONCRETE PAVEMENT, 12" (JOINTED))
- (8) EMBANKMENT MATERIAL AS NEEDED (SEE CROSS SECTIONS)
- (9) STABILIZED SUBBASE - HOT MIX ASPHALT, 4 1/2" (31200502)
- (10) LONGITUDINAL CONSTRUCTION JOINT.  
DRILL AND GROUT NO. 6 DEFORMED EPOXY TIE BARS 24" LONG AT 24" C-C. (SHALL BE INCLUDED IN THE COST OF PORTLAND CEMENT CONCRETE SHOULDERS, 12")
- (11) STEEL PLATE BEAM GUARDRAIL, TYPE A, 6 FOOT POSTS (63000001)
- (12) HOT-MIX ASPHALT STABILIZATION 6" AT STEEL PLATE BEAM GUARD RAIL (Z0005216)

**I-94 - STRUCTURAL PAVEMENT DESIGN BLOCK**

STRUCTURAL DESIGN TRAFFIC:	YEAR 2013
PV = 85,267	SU = 0
ROAD/STREET CLASSIFICATION:	MU = 12,854
P = 20%	CLASS I
S = 40%	M = 40%
TRAFFIC FACTOR:	ACTUAL TF = 71.66
	MINIMUM TF = 8.93
PG GRADE:	BINDER = N/A
	SURFACE = N/A
SUBGRADE SUPPORT RATING:	AC TYPE = N/A
	SSR = POOR (STA 3979+20 TO STA 4105+52 NB)
	SSR = POOR (STA 3978+89 TO STA 14104+25 SB)

NOTE: REMOVE EXISTING PIPE UNDERDRAIN AND PIPE UNDERDRAIN OUTLETS UNLESS OTHERWISE NOTED ON THE DRAINAGE PLANS.

TYPICAL SUB-GRADE AND SUB-BASE PLACEMENT UNDER SHOULDER  
 • VARYING THICKNESS REQUIRED FOR AGGREGATE SUBGRADE IMPROVEMENT 12" WITHIN THE SHOULDER AREA WILL BE INCLUDED IN THE COST OF AGGREGATE SUBGRADE IMPROVEMENT 12".



**BOWMAN, BARRETT & ASSOCIATES INC.**  
 CONSULTING ENGINEERS  
 Chicago, Illinois  
 312.228.0100  
 www.bbandainc.com

FILE NAME = \$FILES\$	USER NAME = default	DESIGNED - JMG	REVISED -
		DRAWN - JMG	REVISED -
		CHECKED - RGR	REVISED -
		DATE - 6/28/2012	REVISED -

**STATE OF ILLINOIS**  
**DEPARTMENT OF TRANSPORTATION**

**TYPICAL SECTIONS - I-94**

SCALE: NA	SHEET NO. 6 OF 15 SHEETS	STA. NA TO STA. NA
-----------	--------------------------	--------------------

F.A. RTE.	SECTION	COUNTY	TOTAL SHEETS	SHEET NO.
94	49-1-R-1	LAKE	677	34
CONTRACT NO. 60L77				
ILLINOIS FED. AID PROJECT				

S:\1101\95-CADD\60L77 IL 173\60L77 Sheets\0160L77-INT-typical.dgn