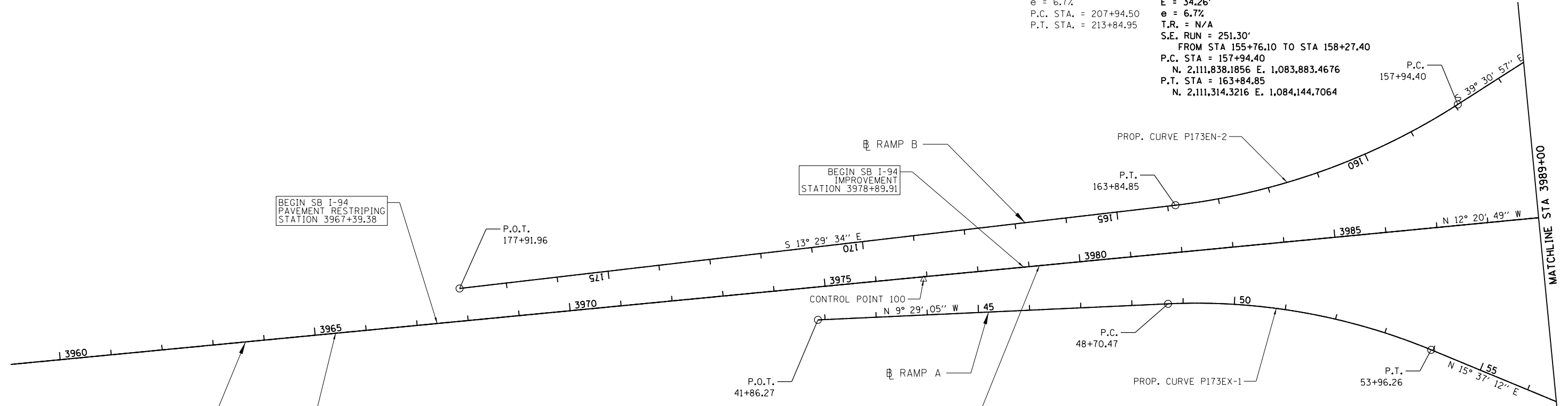


EXIST. CURVE E_SBENI-2
 PI STA. = 210+94.90
 Δ = 26° 01' 24" (RT)
 D = 4° 24' 27"
 R = 1,300.00'
 T = 300.41'
 L = 590.45'
 E = 34.26'
 e = 6.7%
 P.C. STA. = 207+94.50
 P.T. STA. = 213+84.95

PROP. CURVE P173EN-2
 PI STA. = 160+94.81
 N. 2,111,606.4374 E. 1,084,074.6149
 Δ = 26° 01' 24" (RT)
 D = 4° 24' 27"
 R = 1,300.00'
 T = 300.41'
 L = 590.45'
 E = 34.26'
 e = 6.7%
 T.R. = N/A
 S.E. RUN = 251.30'
 FROM STA 155+76.10 TO STA 158+27.40
 P.C. STA = 157+94.40
 N. 2,111,838.1856 E. 1,083,883.4676
 P.T. STA = 163+84.85
 N. 2,111,314.3216 E. 1,084,144.7064



EXIST. CURVE E_NBEXI-1
 PI STA. = 319+51.38
 Δ = 25° 06' 16" (RT)
 D = 4° 46' 29"
 R = 1,200.00'
 T = 267.18'
 L = 525.79'
 E = 29.38'
 e = 7.0%
 P.C. STA. = 316+84.20
 P.T. STA. = 322+09.99

PROP. CURVE P173EX-1
 PI STA. = 51+37.65
 N. 2,111,586.5008 E. 1,084,293.5943
 Δ = 25° 06' 16" (RT)
 D = 4° 46' 29"
 R = 1,200.00'
 T = 267.18'
 L = 525.79'
 E = 29.38'
 e = 7.0%
 T.R. = 44.10'
 FROM STA 55+20.54 TO STA 55+64.64
 S.E. RUN = 180.54'
 FROM STA 53+40.00 TO STA 55+20.54
 P.C. STA = 48+70.47
 N. 2,111,322.9715 E. 1,084,337.6212
 P.T. STA = 53+96.26
 N. 2,111,843.8154 E. 1,084,365.5340

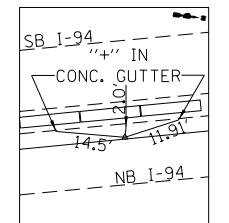
BEGIN SB I-94
 PAVEMENT RESTRIPING
 STATION 3967+39.38

BEGIN SB I-94
 IMPROVEMENT
 STATION 3978+89.91

BEGIN NB I-94
 PAVEMENT RESTRIPING
 STATION 3965+40.00

BEGIN NB I-94
 IMPROVEMENT
 STATION 3979+20.42

CONTROL POINTS ARE NOT TO SCALE



CONTROL POINT 100
 MAG. NAIL SET IN
 INSIDE BIT. SHOULDER
 OF NB I-94
 N: 2,110,842.826
 E: 1,084,346.223
 EL: 735.27

BOWMAN, BARRETT & ASSOCIATES INC.
 CONSULTING ENGINEERS
 Chicago, Illinois
 312.228.0100
 www.bbandainc.com

FILE NAME = \$FILES\$	USER NAME = default	DESIGNED - JMG	REVISED -
		DRAWN - JMG	REVISED -
	PLOT SCALE = 1/4" = 10' 1/4" = 5'	CHECKED - RGR	REVISED -
	PLOT DATE = 6/20/2012	DATE - 6/19/2012	REVISED -

STATE OF ILLINOIS
 DEPARTMENT OF TRANSPORTATION

ALIGNMENT, TIES AND BENCHMARKS

SCALE: 1" = 100' SHEET NO. 1 OF 5 SHEETS STA. 3959+00 TO STA. 3989+00

F.A. RTE.	SECTION	COUNTY	TOTAL SHEETS	SHEET NO.
94	49-1-R-1	LAKE	677	52
CONTRACT NO. 60L77				
ILLINOIS FED. AID PROJECT				

S:\1101\95\CADD\60L77_IL_175\60L77_Sheets\166L76-INT-01.dgn