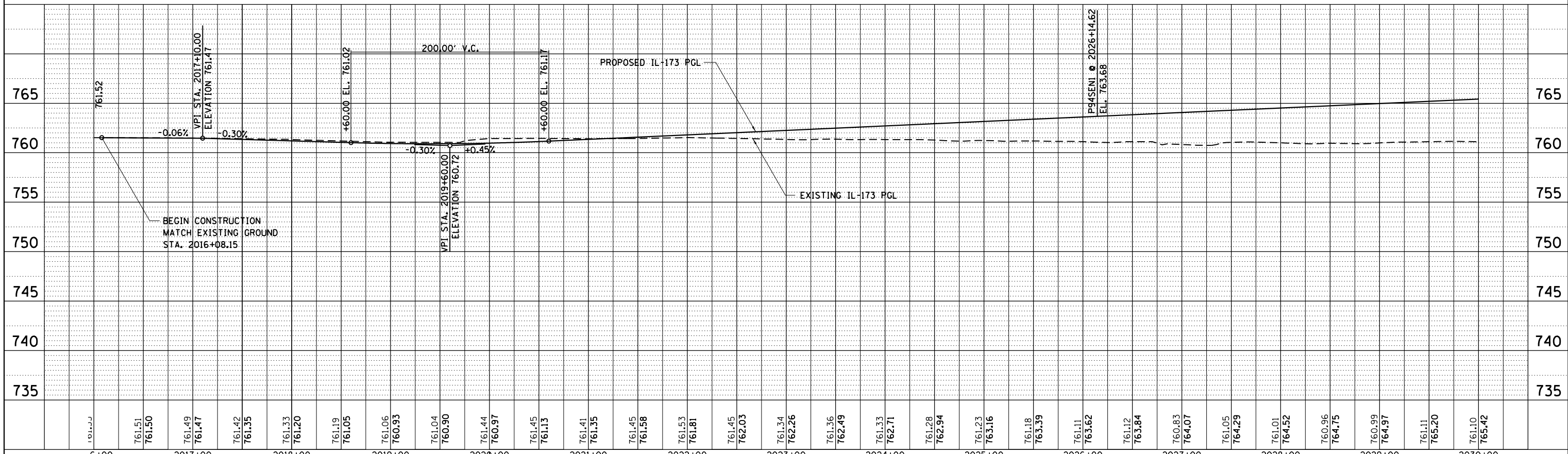
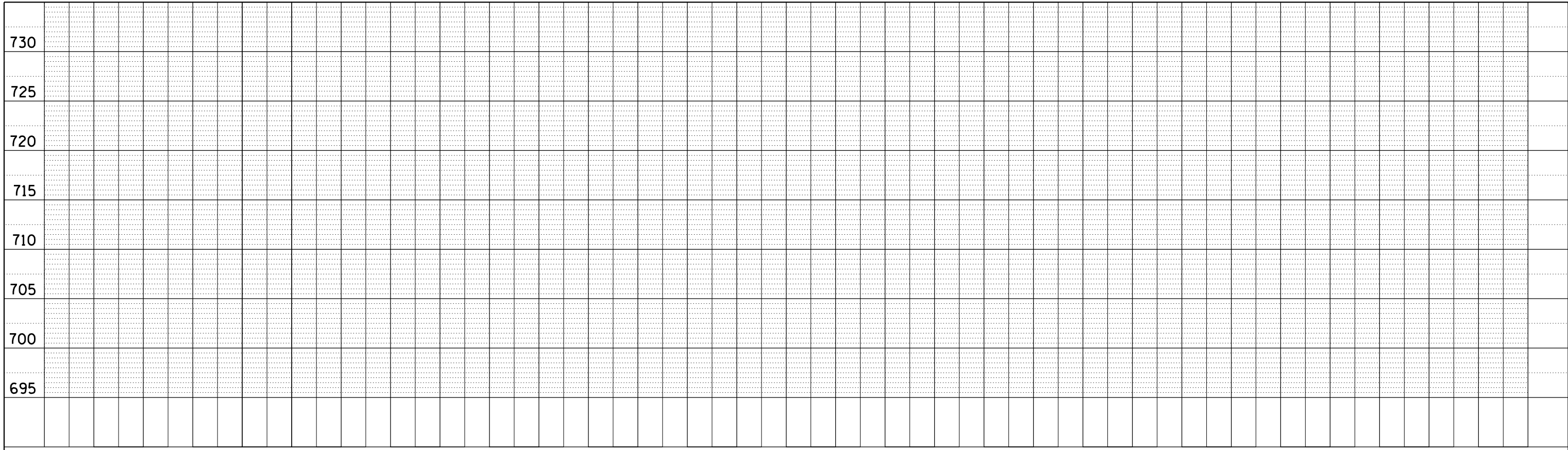


PLAN	SURVEYED	BY	DATE
NOTE BOOK NO.	PLOTTED		
CARD FILE NAME	ALIGNMENT		
	CHECKED		

PROFILE	SURVEYED	BY	DATE
NOTE BOOK NO.	PLOTTED		
STRUCTURE	GRADES CHECKED		
NOTATIS CPWD			



FILE NAME = D:\60L77-sht-profile.dgn	USER NAME = default	DESIGNED -	REVISED -	<p align="center">STATE OF ILLINOIS DEPARTMENT OF TRANSPORTATION</p> <p align="center">PROPOSED PROFILE ILLINOIS ROUTE 173</p> <p>SCALE: 1"=50' SHEET NO. 9 OF 10 SHEETS STA. TO STA.</p>	F.A. RTE. 94	SECTION 49-1-R-1	COUNTY LAKE	TOTAL SHEETS 677	SHEET NO. 95
	PLOT SCALE = Ht1"=10' Vt1"=5'	DRAWN -	REVISED -		CONTRACT NO. 60L77				
	PLOT DATE = 6/20/2012	CHECKED -	REVISED -		ILLINOIS FED. AID PROJECT				
		DATE = 6/19/2012	REVISED -						