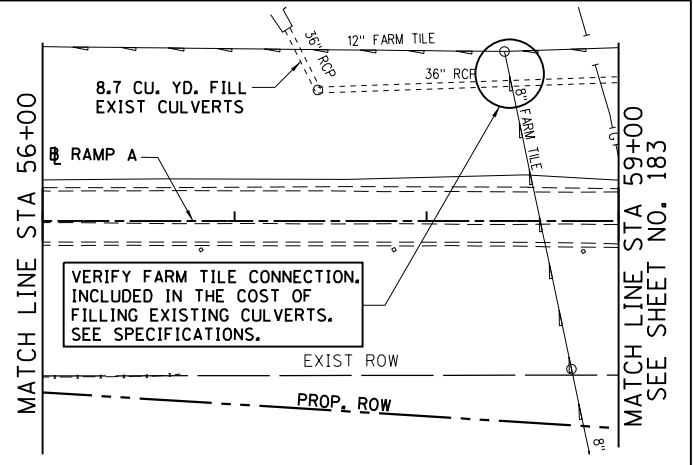
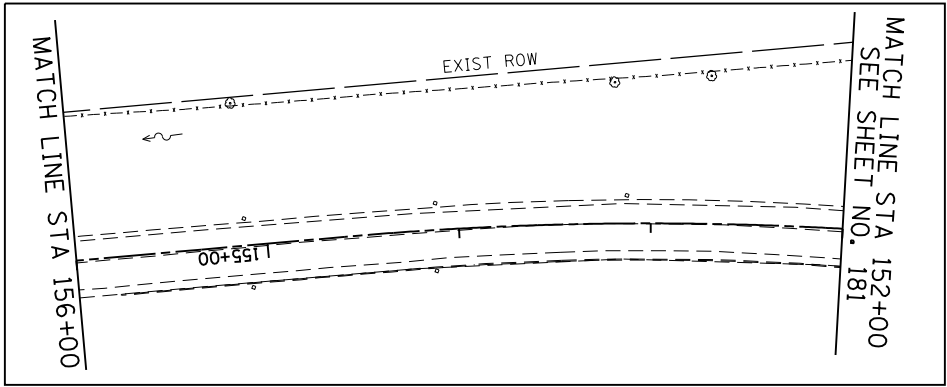
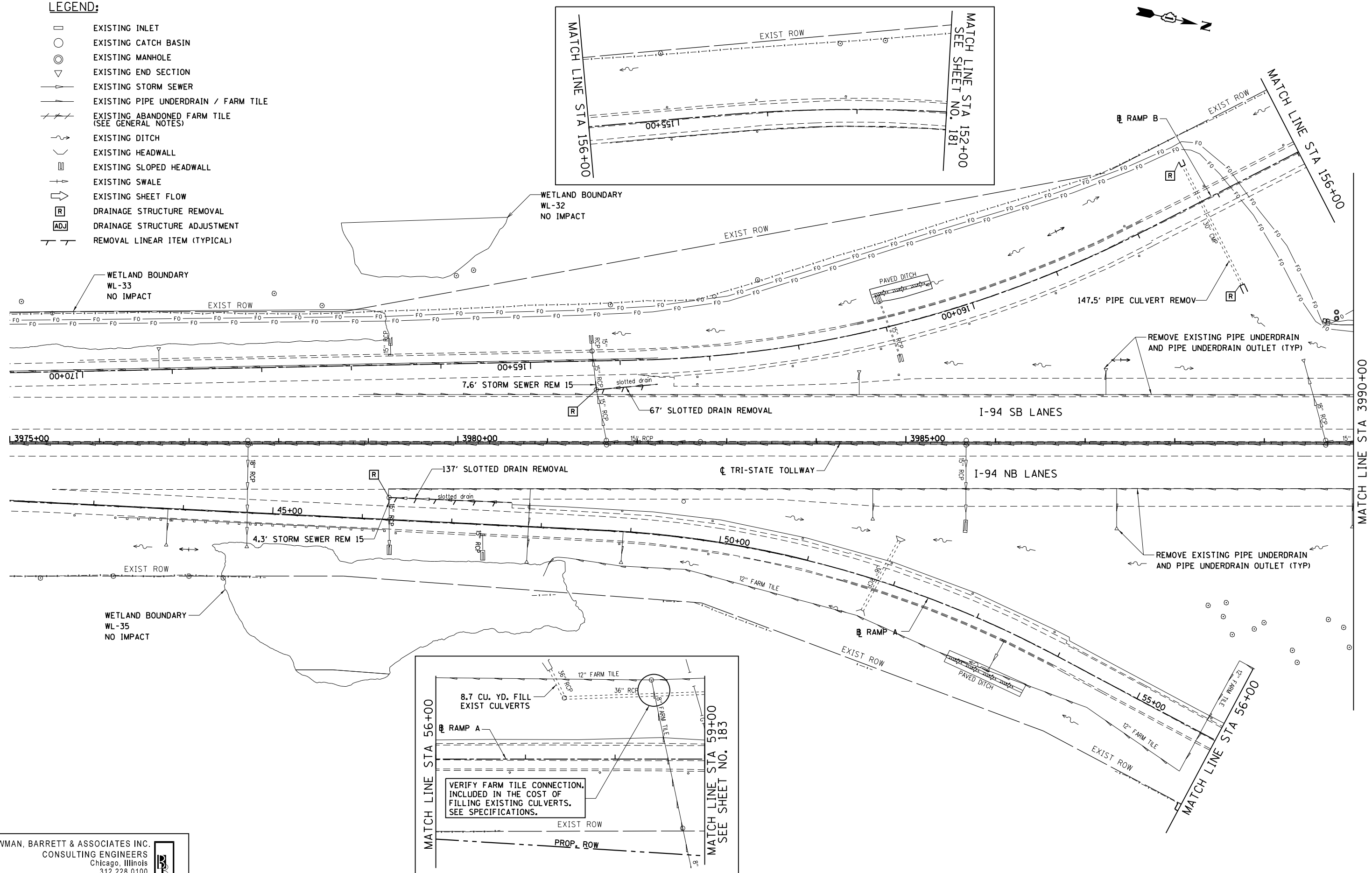


**LEGEND:**

- EXISTING INLET
- EXISTING CATCH BASIN
- ⊙ EXISTING MANHOLE
- ▽ EXISTING END SECTION
- EXISTING STORM SEWER
- EXISTING PIPE UNDERDRAIN / FARM TILE
- EXISTING ABANDONED FARM TILE (SEE GENERAL NOTES)
- ~ EXISTING DITCH
- EXISTING HEADWALL
- EXISTING SLOPED HEADWALL
- EXISTING SWALE
- EXISTING SHEET FLOW
- [R] DRAINAGE STRUCTURE REMOVAL
- [ADJ] DRAINAGE STRUCTURE ADJUSTMENT
- REMOVAL LINEAR ITEM (TYPICAL)



BOWMAN, BARRETT & ASSOCIATES INC.  
 CONSULTING ENGINEERS  
 Chicago, Illinois  
 312.228.0100  
 www.bbandainc.com

FILE NAME = \$FILES\$	USER NAME = default	DESIGNED - JAM	REVISED -
		DRAWN - JAM	REVISED -
	PLOT SCALE = Hgt=10' Wdt=5'	CHECKED - RGR	REVISED -
	PLOT DATE = 6/19/2012	DATE - 6/19/2012	REVISED -

**STATE OF ILLINOIS  
 DEPARTMENT OF TRANSPORTATION**

**EXISTING DRAINAGE PLAN  
 NB I-94 AND SB I-94**

SCALE: 1"=50' SHEET NO. 1 OF 15 SHEETS STA. 3975+00 TO STA. 3990+00

F.A. RTE.	SECTION	COUNTY	TOTAL SHEETS	SHEET NO.
94	49-1-R-1	LAKE	677	171
CONTRACT NO. 60L77				
ILLINOIS FED. AID PROJECT				

S:\1101\95-CADD\60L77\_IL\_175\60L77\_Sheets\160L77-shr-exist.drain01.dgn