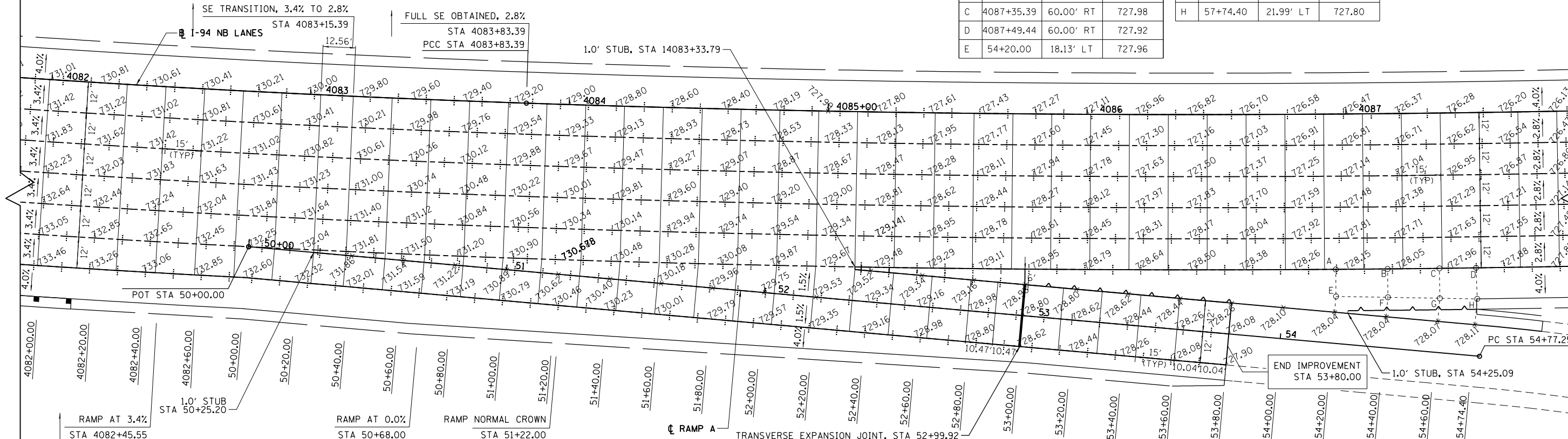


NOTES

- ELEVATIONS ARE GIVEN EVERY 20 FEET ON EVEN STATIONS UNLESS OTHERWISE NOTED.
- RUSSEL ROAD EXIT RAMP PAVEMENT ELEVATIONS ARE BASED ON RAMP A C FROM 50+00.00 TO 54+74.40.
- SEE IDOT STANDARD 42301-04 FOR ADDITIONAL INFORMATION ON EXIT RAMP JOINTING DETAILS.

NB I-94 & RUSSEL ROAD EXIT RAMP GORE SPOT ELEVATIONS

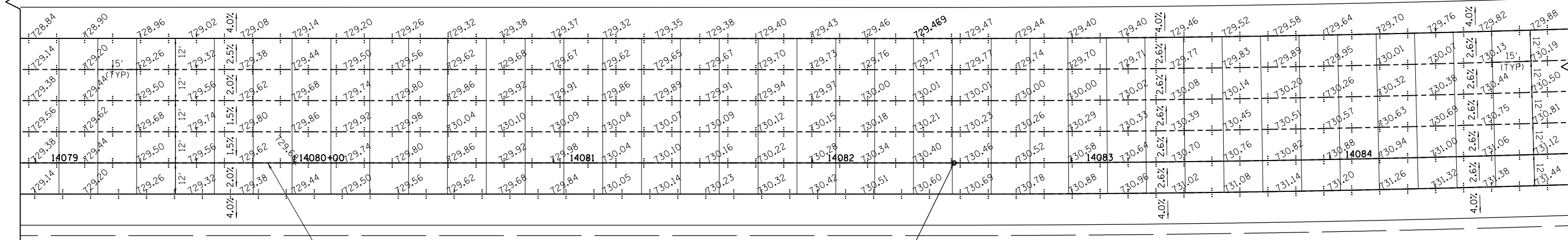
PT	STATION	OFFSET	ELEV.	PT	STATION	OFFSET	ELEV.
A	4086+95.68	60.00' RT	728.17	F	54+40.00	19.54' LT	727.91
B	4087+15.54	60.00' RT	728.07	G	54+60.00	20.96' LT	727.86
C	4087+35.39	60.00' RT	727.98	H	57+74.40	21.99' LT	727.80
D	4087+49.44	60.00' RT	727.92				
E	54+20.00	18.13' LT	727.96				



TANGENT RUNOUT	SUPERELEVATION RUNOFF
NORMAL CROWN STA 14080+88.70	DECEL LANE AT 1.5% LANES 1, 2 AT -1.5% LANE 3 AT -2.0% LANE 4 AT -2.5% STA 14082+29.32
END TANGENT RUNOUT STA 14081+16.86	DECEL LANE AT 2.0% LANES 1, 2 AND 3 AT -2.0% LANE 4 AT -2.5% STA 14083+04.32
	FULL SE OBTAINED, -2.6% STA 14083+11.86

NOTES

- ELEVATIONS ARE GIVEN EVERY 20 FEET ON EVEN STATIONS UNLESS OTHERWISE NOTED.



BOWMAN, BARRETT & ASSOCIATES INC.
CONSULTING ENGINEERS
Chicago, Illinois
312.228.0100
www.bbainc.com

FILE NAME = #FILES#	USER NAME = default	DESIGNED - JMG	REVISED -	STATE OF ILLINOIS DEPARTMENT OF TRANSPORTATION	I-94 JOINTING PLAN			F.A. RTE. 94	SECTION 49-1-R-1	COUNTY LAKE	TOTAL SHEETS 677	SHEET NO. 235
	PLOT SCALE = H1'=10' V1'=5'	CHECKED - RGR	REVISED -		SCALE: 1" = 20'	SHEET NO. 8 OF 17 SHEETS	STA. NA TO STA. NA	CONTRACT NO. 60L77				
	PLOT DATE = 6/20/2012	DATE - 6/19/2012	REVISED -		ILLINOIS FED. AID PROJECT							

S:\1101\95-CADD\60L77 IL 173\60L77 Sheets\0160L77-INT-jointing08.dgn