

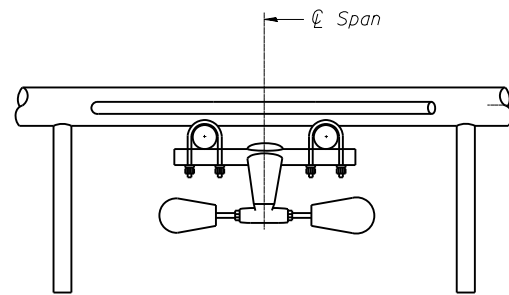
**PLAN DETAIL "A"**  
 ☉ Span between Panel Points

**PLAN DETAIL "B"**  
 ☉ Span at Panel Point

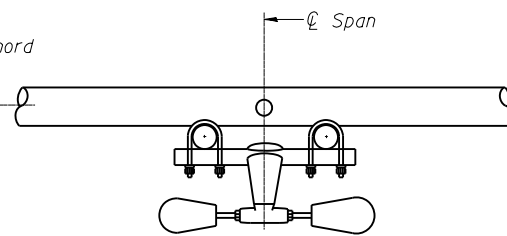
**PLAN DETAIL "C"**  
 ☉ Span at ☉ Chord Splice

\* Center of horizontal to center of splice dimension may vary. Verify before drilling holes in mounting tube.

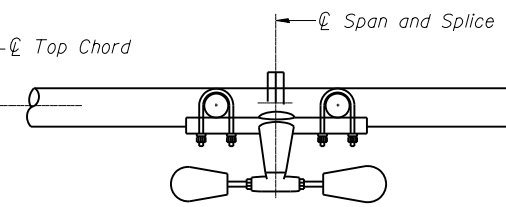
- NOTES**
- Damper: One damper per truss. (31 lbs. minimum Stockbridge-Type Aluminum - 29" minimum between ends of weights) Cost included in Overhead Sign Structure...
  - Materials: Materials: Aluminum tubes shall be ASTM B221 alloy 6061 temper T6. Cost included in Overhead Sign Structure...



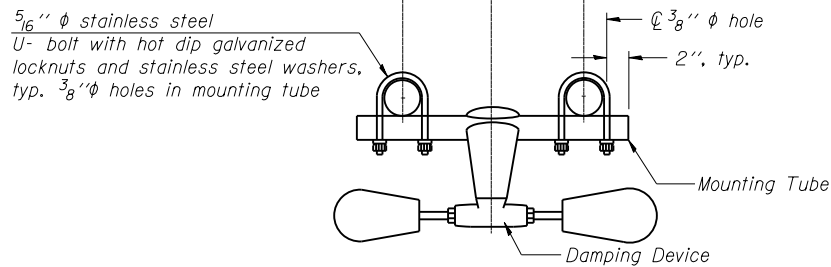
**SECTION A-A**



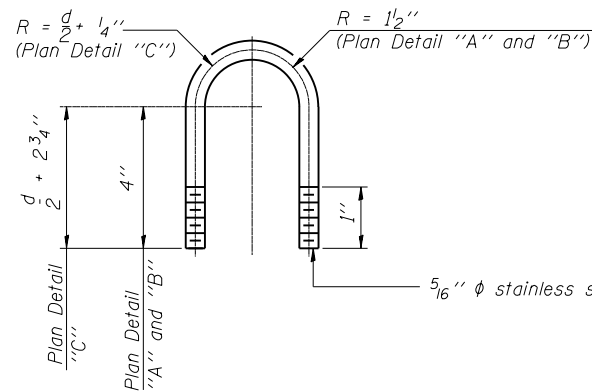
**SECTION B-B**



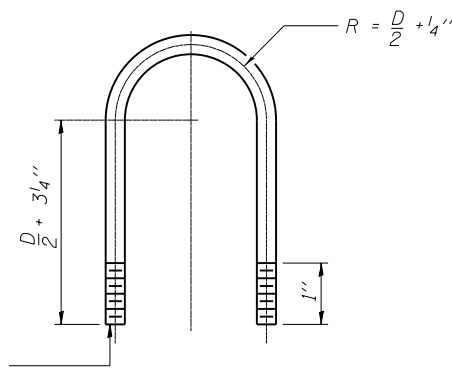
**SECTION C-C**



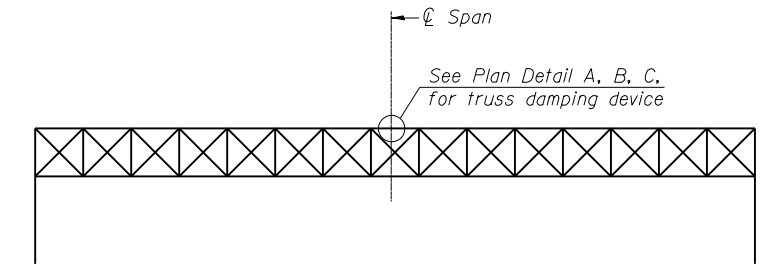
**TRUSS DAMPING DEVICE CONNECTION DETAIL**  
 (Typical)



**DAMPING DEVICE MOUNTING TUBE U-BOLT DETAIL**  
 (Typical)



**TOP CHORD TO CROSS TUBE U-BOLT DETAIL**  
 (Typical - Detail "A" and "B")



**ELEVATION**  
 Aluminum Overhead Sign Truss

OS-A-D

1-20-11

BOWMAN, BARRETT & ASSOCIATES INC.  
 CONSULTING ENGINEERS  
 Chicago, Illinois  
 312.228.0100  
 www.bbainc.com



FILE NAME = \*FILES\*

USER NAME = default

DESIGNED - TF

REVISD

CHECKED - RGR

REVISD

PLOT SCALE = H=1"=10' V=1"=5'

DRAWN - TF

REVISD

PLOT DATE = 6/20/2012

CHECKED - RGR

REVISD

STATE OF ILLINOIS  
 DEPARTMENT OF TRANSPORTATION

OVERHEAD SIGN STRUCTURE  
 DAMPING DEVICE

SHEET NO. 8 OF 12 SHEETS

F.A. RTE.	SECTION	COUNTY	TOTAL SHEETS	SHEET NO.
94	49-1-R-1	LAKE	677	298
CONTRACT NO. 60L77				

ILLINOIS FED. AID PROJECT

77 Sheets\0160L77-snt-signstructures-details.dgn