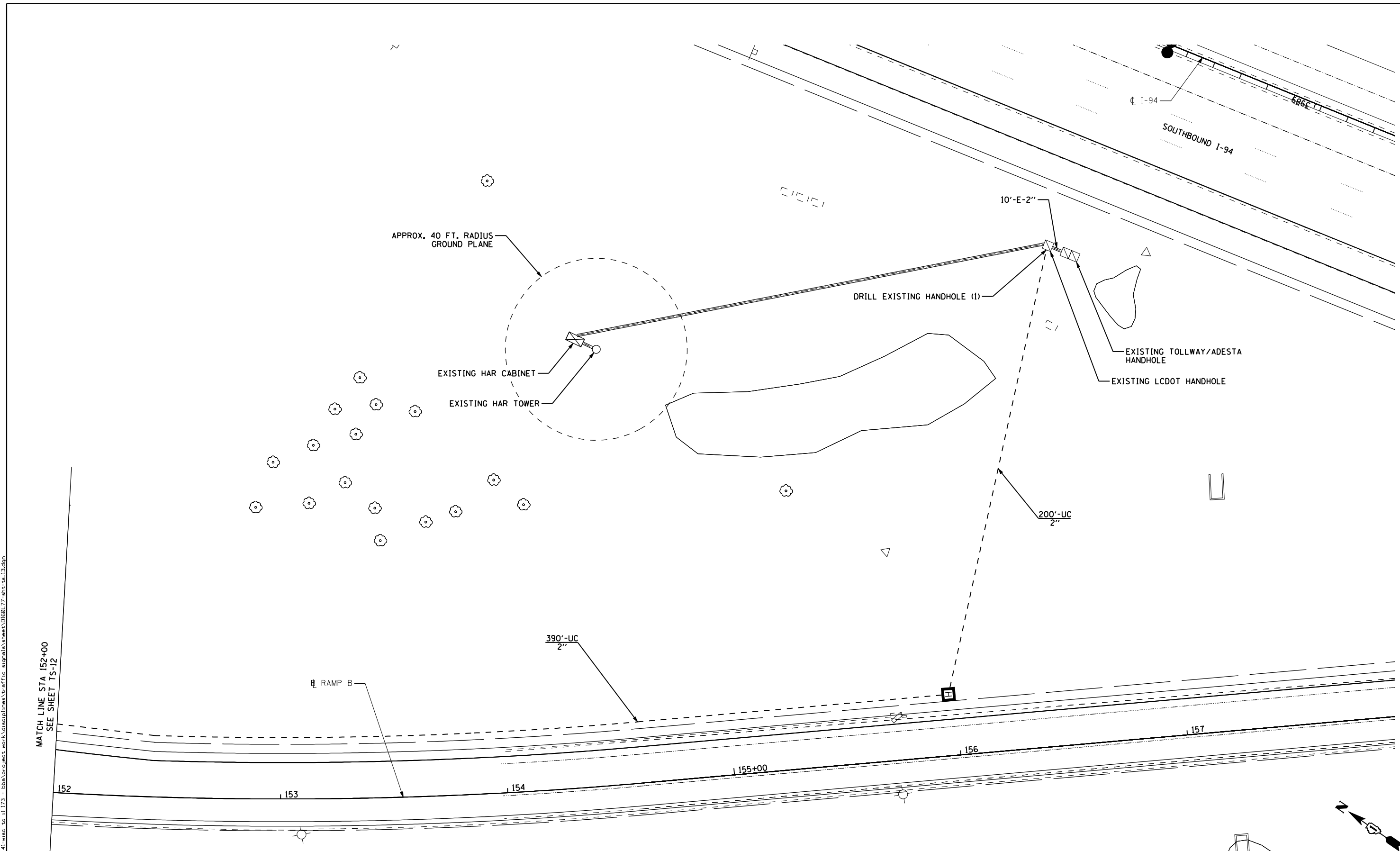
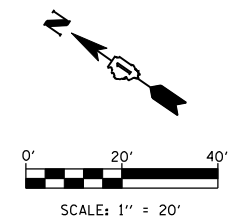


s:\projects\3021.us\_41-usa\_to\_11.172 - bba\proj\sect\_work\disiplines\tr-offic\_signals\shes\0160L77-shr-ts.13.dgn



MATCH LINE STA 152+00  
 SEE SHEET TS-12

**EJM ENGINEERING, INC.**  
 411 South Wells Street Suite 1000  
 Chicago, Illinois 60607



FILE NAME =	USER NAME = gra1	DESIGNED - GR	REVISED -
		DRAWN - GR	REVISED -
	PLOT SCALE = 40,0000 ' / IN.	CHECKED - BKS	REVISED -
	PLOT DATE = 6/18/2012	DATE - 06/19/2012	REVISED -

**STATE OF ILLINOIS**  
**DEPARTMENT OF TRANSPORTATION**

**HAR TOWER**  
**I-94 RAMP "B" INFIELD**

SCALE: 1" = 20'    SHEET NO. 1 OF 1 SHEETS    STA. 152+00 TO STA. 157+92

F.A.I. RTE.	SECTION	COUNTY	TOTAL SHEETS	SHEET NO.
94	49-1-R-1	LAKE	677	344
CONTRACT NO.			60L77	
ILLINOIS FED. AID PROJECT				

TS-13