

**NOTES:**

1. SIGNAL HEAD SHALL BE BAGGED AND DE-ENERGIZED PRIOR TO ACTIVATION OF THIS STAGE.
2. SIGNAL HEAD SHALL BE ROTATED TO FACE WESTBOUND TRAFFIC DURING THIS STAGE.
3. TEMPORARY SIGN AND MOUNTING IS INCIDENTAL TO THE COST OF TEMPORARY SIGNAL INSTALLATION.

**REMOVAL AND RELOCATION NOTES**

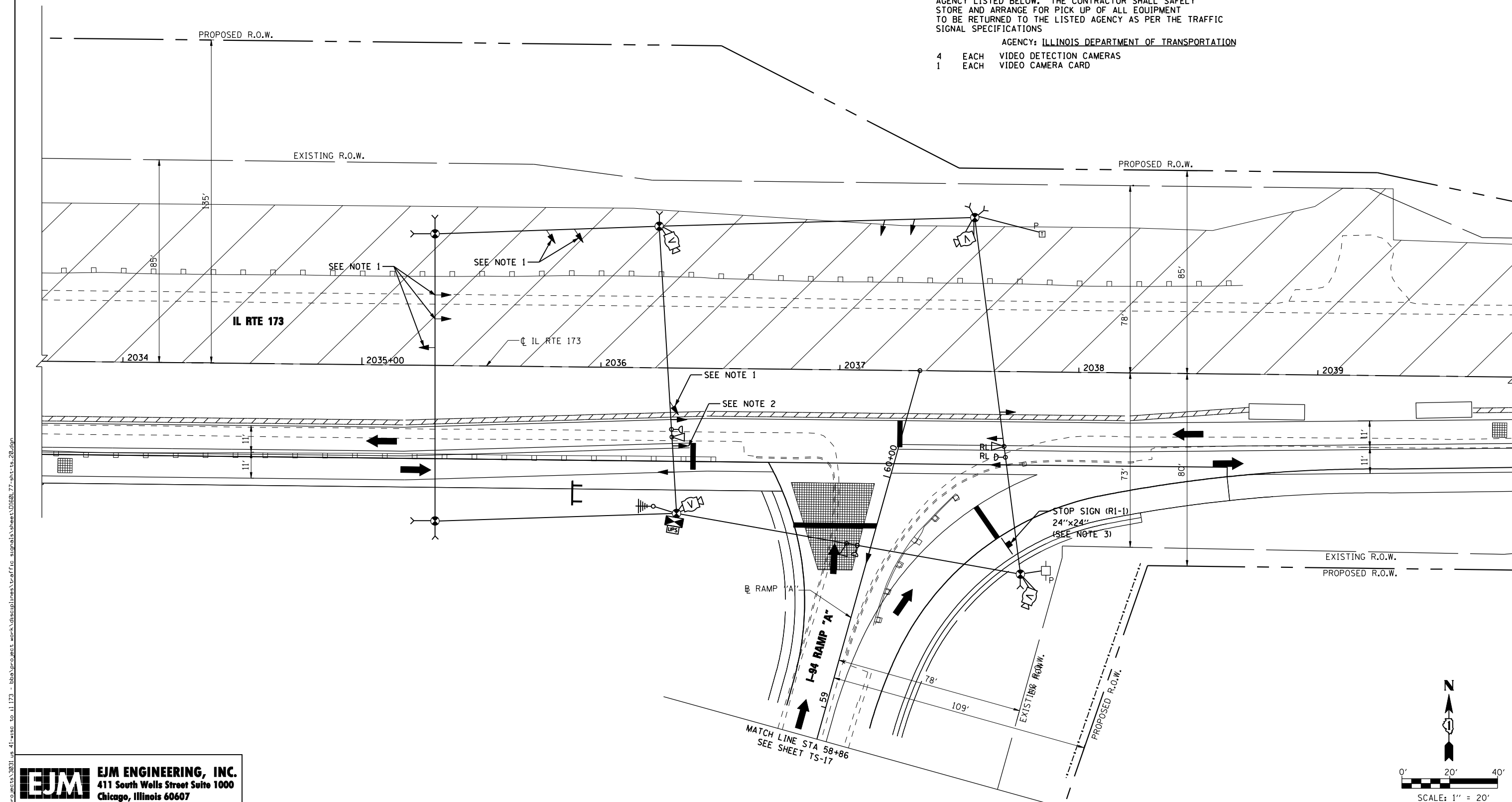
THE FOLLOWING ITEMS SHALL BE RELOCATED TO THE PERMANENT SIGNAL INSTALLATION UPON COMPLETION OF STAGE 2A AND PRIOR TO ACTIVATION OF PERMANENT SIGNAL OPERATIONS.

- 3 EACH LIGHT DETECTOR
- 1 EACH LIGHT DETECTOR AMPLIFIER
- 3 EACH CONFIRMATION BEACON

THE FOLLOWING ITEMS SHALL BE REMOVED BY THE CONTRACTOR AND SHALL REMAIN THE PROPERTY OF THE AGENCY LISTED BELOW. THE CONTRACTOR SHALL SAFELY STORE AND ARRANGE FOR PICK UP OF ALL EQUIPMENT TO BE RETURNED TO THE LISTED AGENCY AS PER THE TRAFFIC SIGNAL SPECIFICATIONS

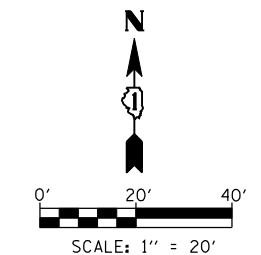
AGENCY: ILLINOIS DEPARTMENT OF TRANSPORTATION

- 4 EACH VIDEO DETECTION CAMERAS
- 1 EACH VIDEO CAMERA CARD



s:\projects\3021.us\_41-usa\_to\_il\_173 - bba\proj\sect\_work\disuplines\tr-offic\_signals\sheet\60L77-sht-ts-20.dgn

**EJM ENGINEERING, INC.**  
 411 South Wells Street Suite 1000  
 Chicago, Illinois 60607



FILE NAME =	USER NAME = grai	DESIGNED - GR	REVISED -
		DRAWN - GR	REVISED -
	PLOT SCALE = 40,0000' / IN.	CHECKED - BKS	REVISED -
	PLOT DATE = 6/18/2012	DATE - 06/19/2012	REVISED -

**STATE OF ILLINOIS  
 DEPARTMENT OF TRANSPORTATION**

**TEMPORARY TRAFFIC SIGNAL INSTALLATION  
 IL RTE 173 AT I-94 RAMP "A" - STAGE 2A**  
 SCALE: 1" = 20' SHEET NO. 1 OF 2 SHEETS STA. 2033+67 TO STA. 2039+83

F.A.I. RTE.	SECTION	COUNTY	TOTAL SHEETS	SHEET NO.
94	49-1-R-1	LAKE	677	351
CONTRACT NO. 60L77			ILLINOIS FED. AID PROJECT	

TS-20