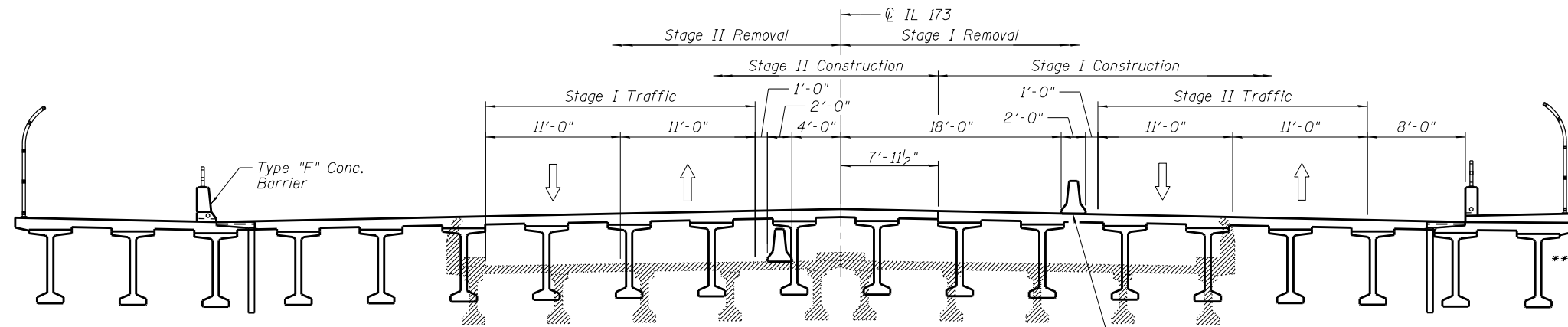
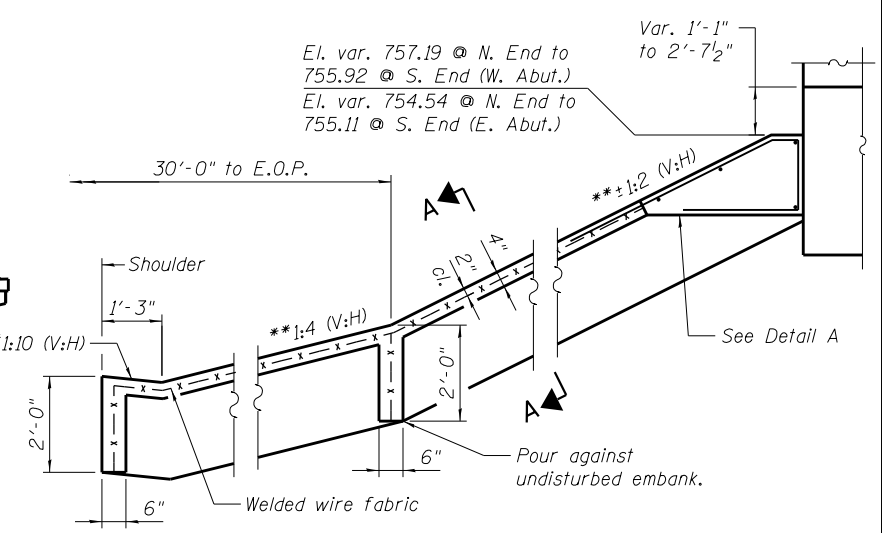


6/19/2012 11:01:39 AM

S:\10105\_CADD\60L77\_IL\_173\60L77\_Sheets\0490535-60L77-003-CS.dgn

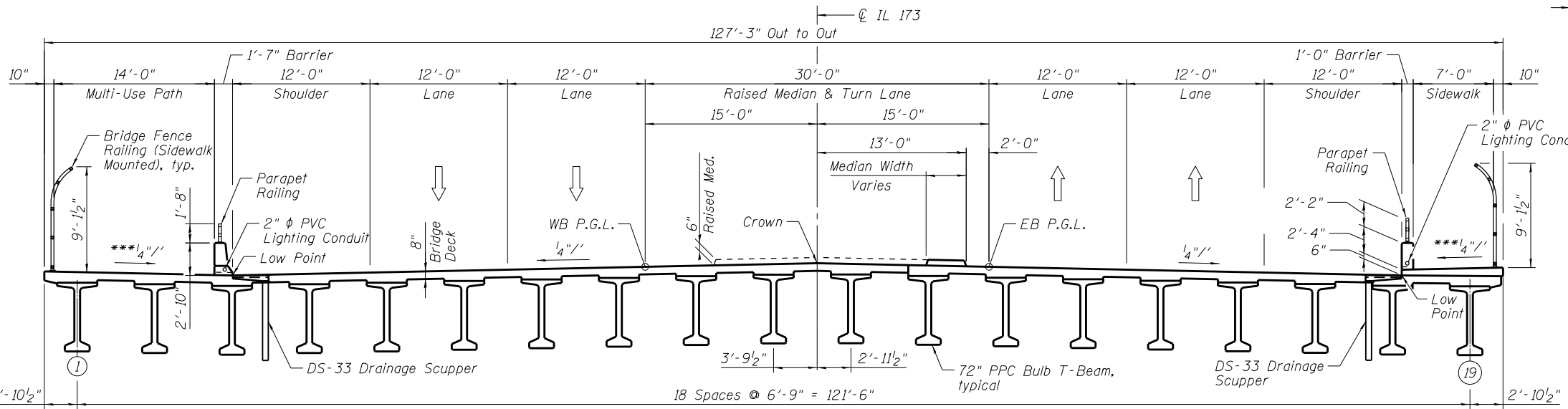


**STAGE I & II CONSTRUCTION**  
(Looking East)



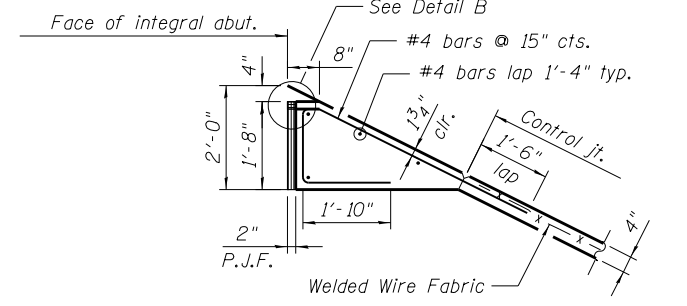
Slope wall shall be reinforced with welded wire fabric, 6 in x 6 in - W4.0 x W4.0, weighing 58 lbs. per 100 sq. ft. Cost of welded wire fabric included with Slope Wall 4"

**SECTION THRU CONCRETE SLOPE WALL**

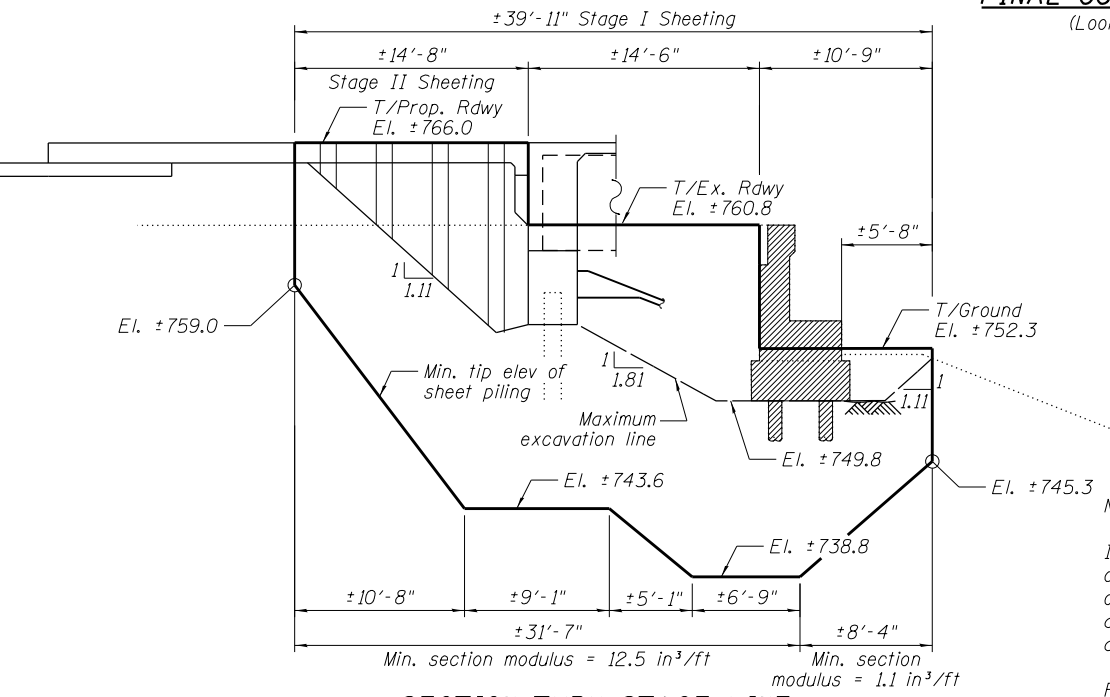


**FINAL CONFIGURATION**  
(Looking East)

\*\*\* Provide formed openings at base of barrier to allow drainage to reach scuppers (See Superstructure Details)



**DETAIL A**

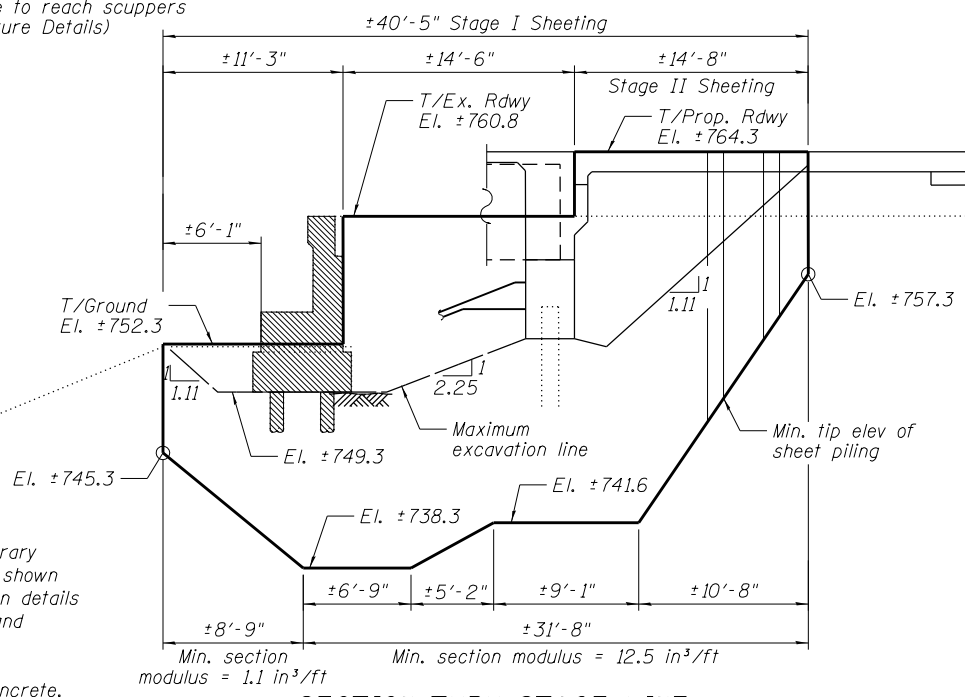


**SECTION THRU STAGE LINE WEST ABUTMENT**

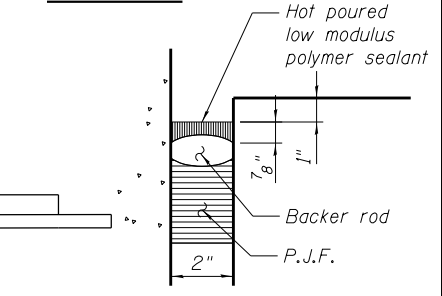
**LEGEND**  
- Structure Removal Limits

Notes:  
If the Contractor chooses to alter the temporary cantilevered sheet piling design requirements shown on the plans, a design submittal including plan details and calculations will be required for review and acceptance by the Engineer.

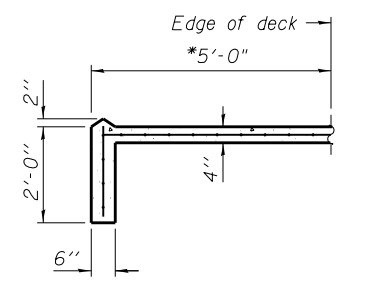
Remove all existing abutment and wingwall concrete. Remove all abutment and wingwall piles to minimum depth of 2'-0" beneath proposed subgrade elevation.



**SECTION THRU STAGE LINE EAST ABUTMENT**



**DETAIL B**



**SECTION A-A**

\* 0'-0" at N. edge of W. Slope wall, to accommodate Retaining Wall (S.N. 049-W045)

BOWMAN, BARRETT & ASSOCIATES INC.  
CONSULTING ENGINEERS  
Chicago, Illinois  
312.228.0100  
www.bbandatinc.com

USER NAME =	DESIGNED - MRM/DF	DATE - 6/19/2012
PLLOT SCALE =	CHECKED - TL	REVISED -
PLLOT DATE =	DRAWN - MTR	REVISED -
	CHECKED - MRM	REVISED -

**STATE OF ILLINOIS**  
**DEPARTMENT OF TRANSPORTATION**

**CONSTRUCTION STAGING & DETAILS**  
**STRUCTURE NO. 049-0535 (BRIDGE NO. 441)**

SHEET NO. S-3 OF S-36 SHEETS

F.A.I. RTE.	SECTION	COUNTY	TOTAL SHEETS	SHEET NO.
94	49-1-R-1	LAKE	677	441
CONTRACT NO. 60L77				
ILLINOIS FED. AID PROJECT				