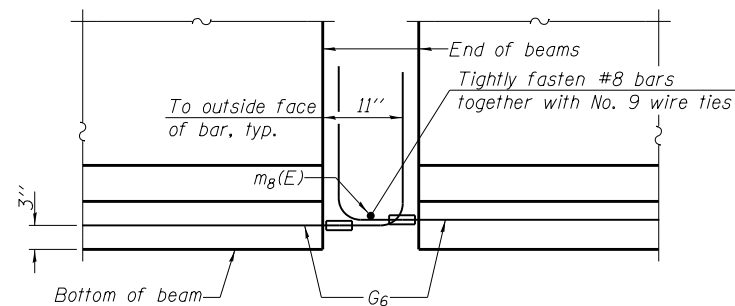
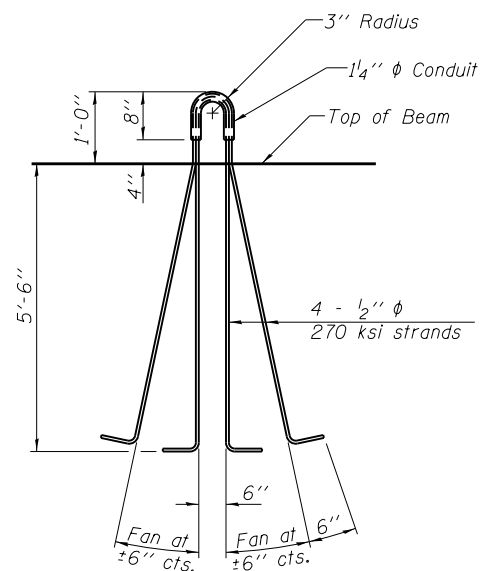


NOTES

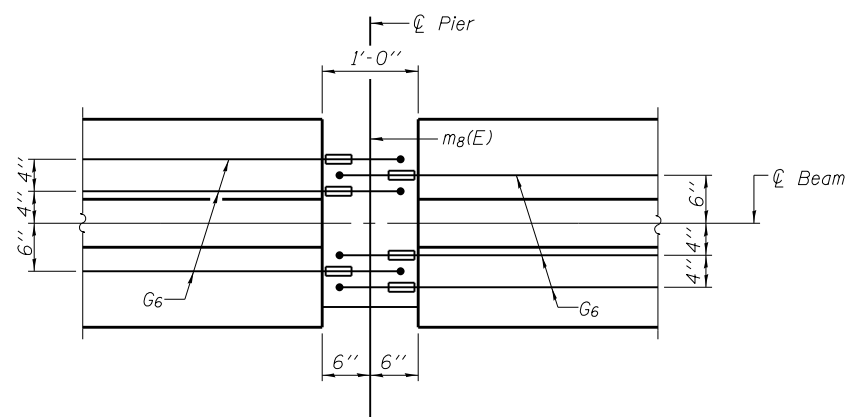
Inserts for $\frac{3}{4}$ " ϕ threaded dowel rods, when specified, are to be two strut ferrule type for interior beams and single ferrule, flared loop type for exterior beams. Prestressing steel shall be uncoated high strength, low relaxation 7-wire strand, Grade 270. The nominal diameter shall be $\frac{1}{2}$ " and the nominal cross-sectional area shall be 0.153 sq. in. A minimum $2\frac{1}{2}$ " ϕ lifting pin shall be used to engage the lifting loops during handling. Tilt G6 bars when necessary to maintain $1\frac{1}{2}$ " clearance. The top and bottom plates shall be AASHTO M270 Grade 50. The bottom plates and studs shall be galvanized according to AASHTO M111. Top plates and threaded rods need not be galvanized. Threaded rods shall be ASTM F 1554 Grade 55. The G6 bar assembly shall be capable of developing 125 percent of the yield strength of the grade 60 reinforcement bar components. The assembly shall allow completion of the splice without turning of the hook bar. The hook bar shall be threaded such that the entire coupler can be threaded onto the hook bar. Beams requiring G6 bar assemblies shall not be released from the fabricator until they have attained 45 days of age or older. See sheets S-16 and S-17 of S-36 for m8(E) bar details.



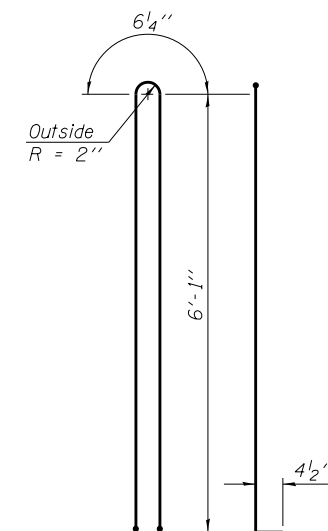
ELEVATION OF BEAM AT PIER



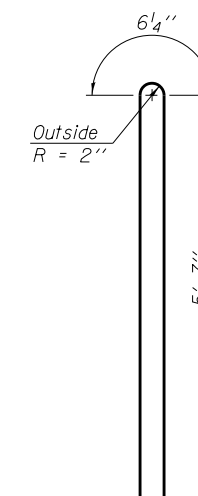
LIFTING LOOP DETAIL



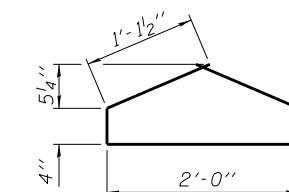
PLAN OF BEAM AT PIER



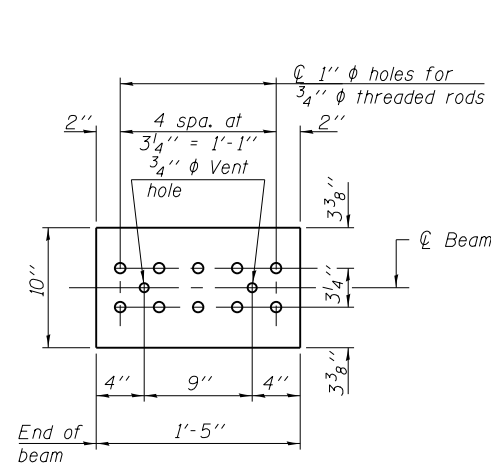
BAR G1



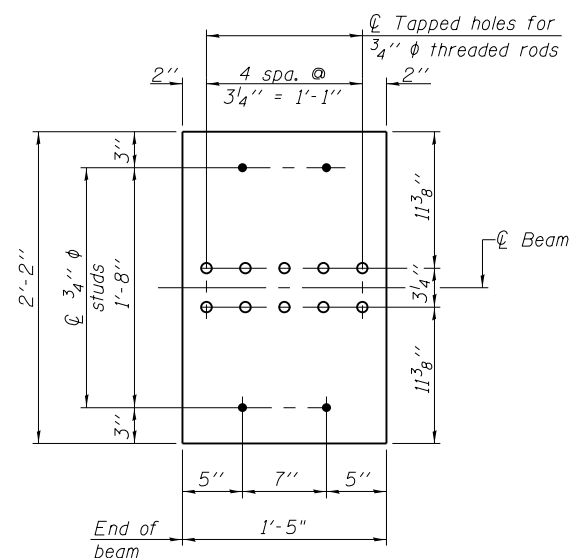
BAR G2



BAR G4

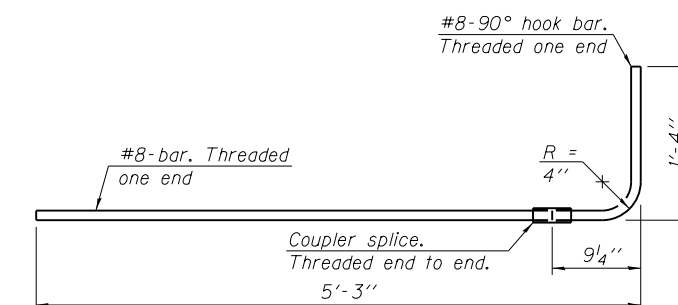


TOP PLATE



BOTTOM PLATE

See bearing details for pintle hole locations when required.



G6 BAR ASSEMBLY

BILL OF MATERIAL

Item	Unit	Total
Furnishing and Erecting Precast Prestressed Concrete Bulb T-Beams, 72"	Foot	4,757

6/19/2012 11:05:56 AM

S:\101\05_CADD\60L77_IL_173\60L77_Sheets\0490535-60L77-025-BD2.dgn

PBT-4-72D

1-28-11

BOWMAN, BARRETT & ASSOCIATES INC.
CONSULTING ENGINEERS
Chicago, Illinois
312.228.0100
www.bbandatnc.com

USER NAME =	DESIGNED - MRM	DATE - 6/19/2012
PLOT SCALE =	CHECKED - IL	REVISED -
PLOT DATE =	DRAWN - LAM	REVISED -
	CHECKED - MRM	REVISED -

STATE OF ILLINOIS
DEPARTMENT OF TRANSPORTATION

72" PPC BULB T-BEAM DETAILS II
STRUCTURE NO. 049-0535 (BRIDGE NO. 441)

SHEET NO. S-25 OF S-36 SHEETS

F.A.I. RTE.	SECTION	COUNTY	TOTAL SHEETS	SHEET NO.
94	49-1-R-1	LAKE	677	463
CONTRACT NO. 60L77				
ILLINOIS FED. AID PROJECT				