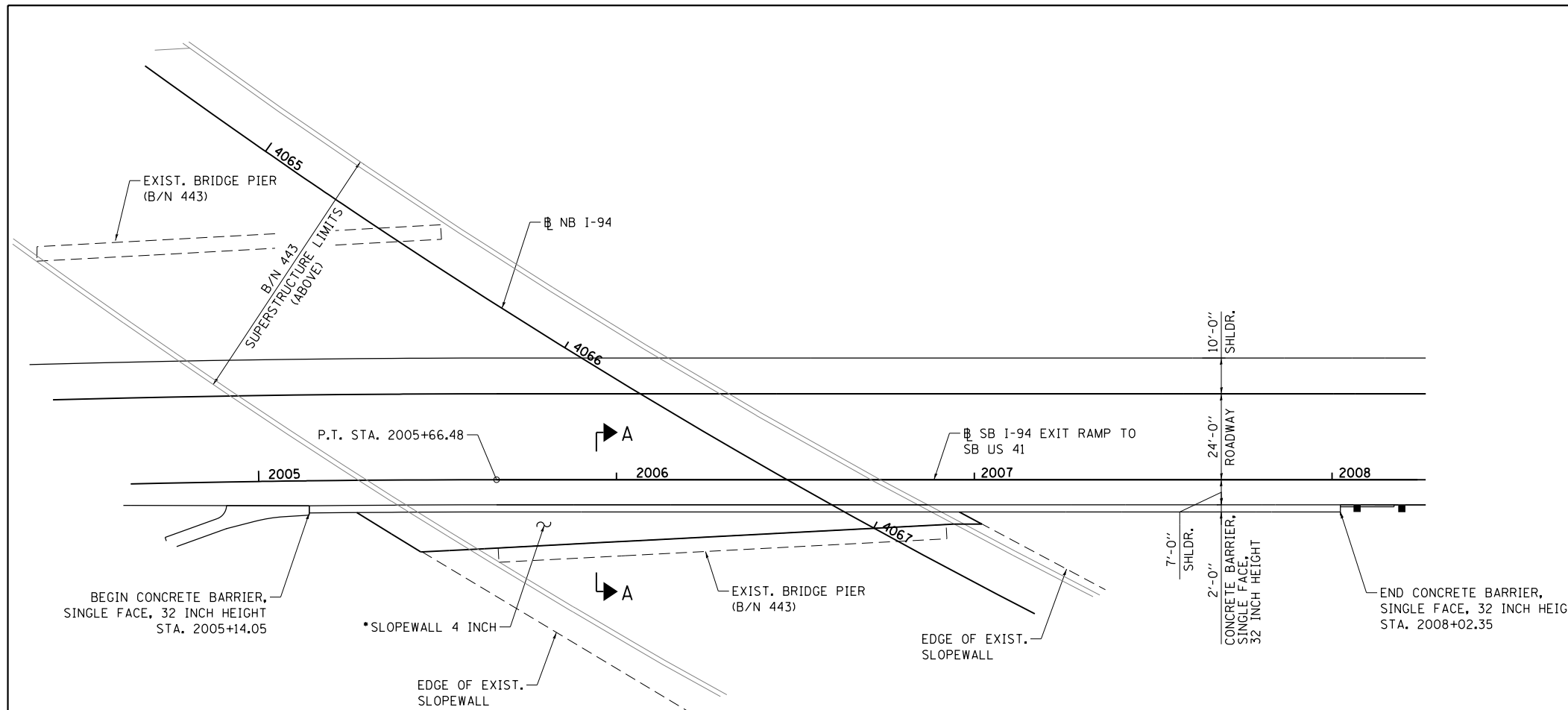
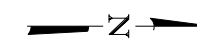


NOTES:

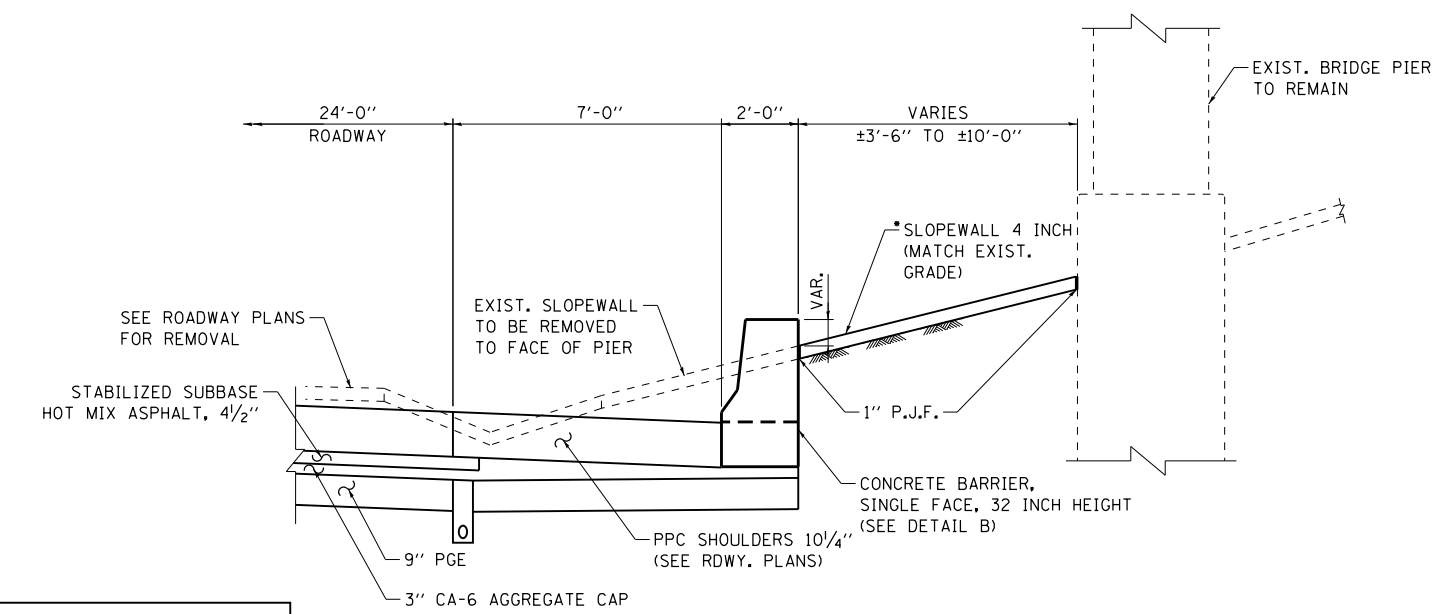
1. TIE BARS SHALL BE EPOXY COATED. COST OF TIE BARS INCLUDED IN THE COST OF CONCRETE BARRIER BASE. SEE STANDARD SPECIFICATIONS FOR DETAILS REGARDING PLACEMENT OF TIE BARS.
2. EARTHWORK ASSOCIATED WITH CONSTRUCTION OF BARRIER IS INCLUDED IN ROADWAY QUANTITY FOR EARTH EXCAVATION.
3. CONCRETE SLOPEWALL 4 INCH TO BE REINFORCED WITH 6"x6"-W4.0X4.0 W.W.F. WEIGHING 58 LBS. PER 100 SQ. FT. PLACE W.W.F. 2" CLR. FROM TOP OF CONCRETE.
4. APPLY PROTECTIVE COAT TO TOP OF BARRIER AND TO BARRIER FACE ADJACENT TO TRAFFIC.
5. SAW CUT EXIST. SLOPEWALL FULL DEPTH AT REMOVAL LIMITS. COST INCLUDED WITH SLOPEWALL REMOVAL.
6. SEE ROADWAY PLANS FOR ADDITIONAL DETAILS NOT SHOWN ON THIS SHEET.



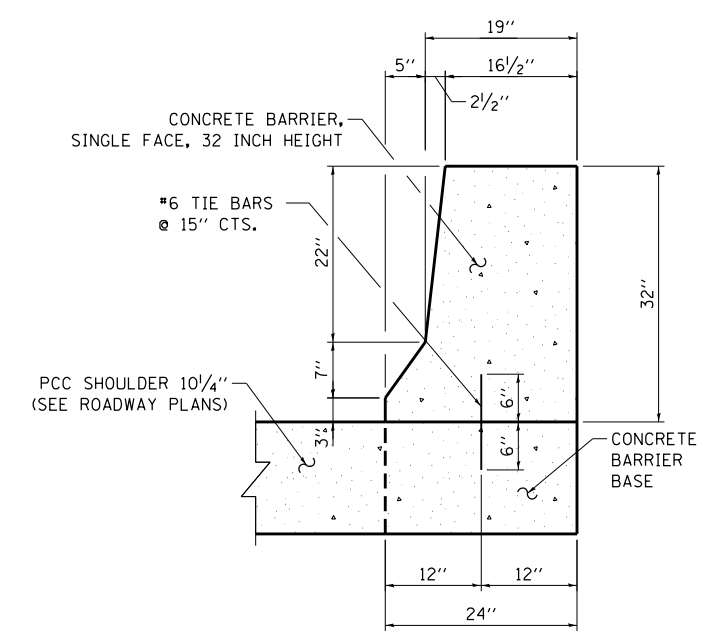
PARTIAL PLAN



• EXISTING SLOPEWALL TO BE REMOVED TO THE FACE OF THE EXISTING BRIDGE PIER. THIS WORK TO BE PAID FOR AS 50104650 - SLOPEWALL REMOVAL

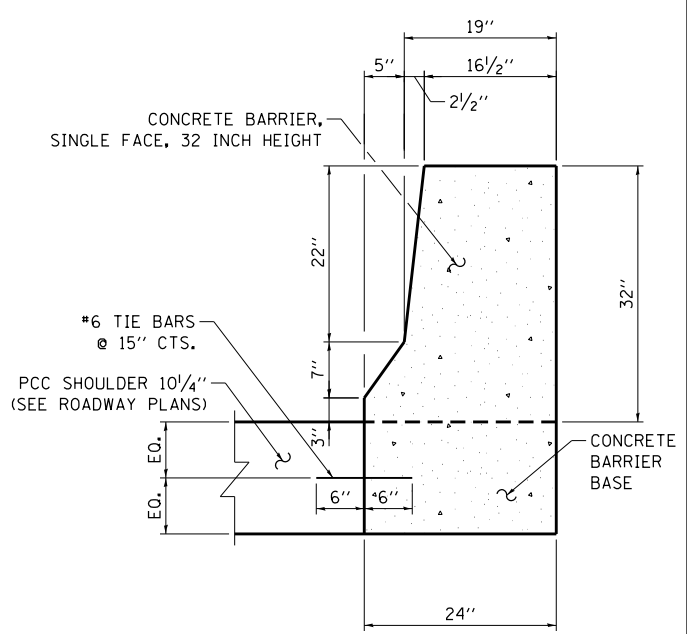


SECTION A-A
(LOOKING NORTH)



ALTERNATE 1

BARRIER INDEPENDENT OF MONOLITHIC BASE AND SHOULDER



ALTERNATE 2

MONOLITHIC BARRIER AND BASE, INDEPENDENT OF SHOULDER. NOTE THAT PCC SHOULDER PAVEMENT MUST BE IN PLACE PRIOR TO PLACING BACKFILL BEHIND CONCRETE BARRIER

DETAIL B

THE CONTRACTOR HAS THE OPTION OF CHOOSING BETWEEN ALTERNATES 1 & 2, SHOWN ABOVE

BOWMAN, BARRETT & ASSOCIATES INC.
CONSULTING ENGINEERS
Chicago, Illinois
312.228.0100
www.bbandainc.com

FILE NAME = \$FILES\$	USER NAME = default	DESIGNED - MRM	REVISED -
		DRAWN - MTR	REVISED -
		CHECKED - RGR	REVISED -
		DATE - 6/19/2012	REVISED -

STATE OF ILLINOIS
DEPARTMENT OF TRANSPORTATION

CIVIL DETAILS	
SCALE: NONE	SHEET NO. 1 OF 1 SHEETS STA. NONE TO STA.

F.A. RTE.	SECTION	COUNTY	TOTAL SHEETS	SHEET NO.
94	49-1-R-1	LAKE	677	483
CONTRACT NO. 60L77				
ILLINOIS FED. AID PROJECT				

S:\1101\95-CADD\60L77 IL 175\60L77-shr-cv11-detail.dgn