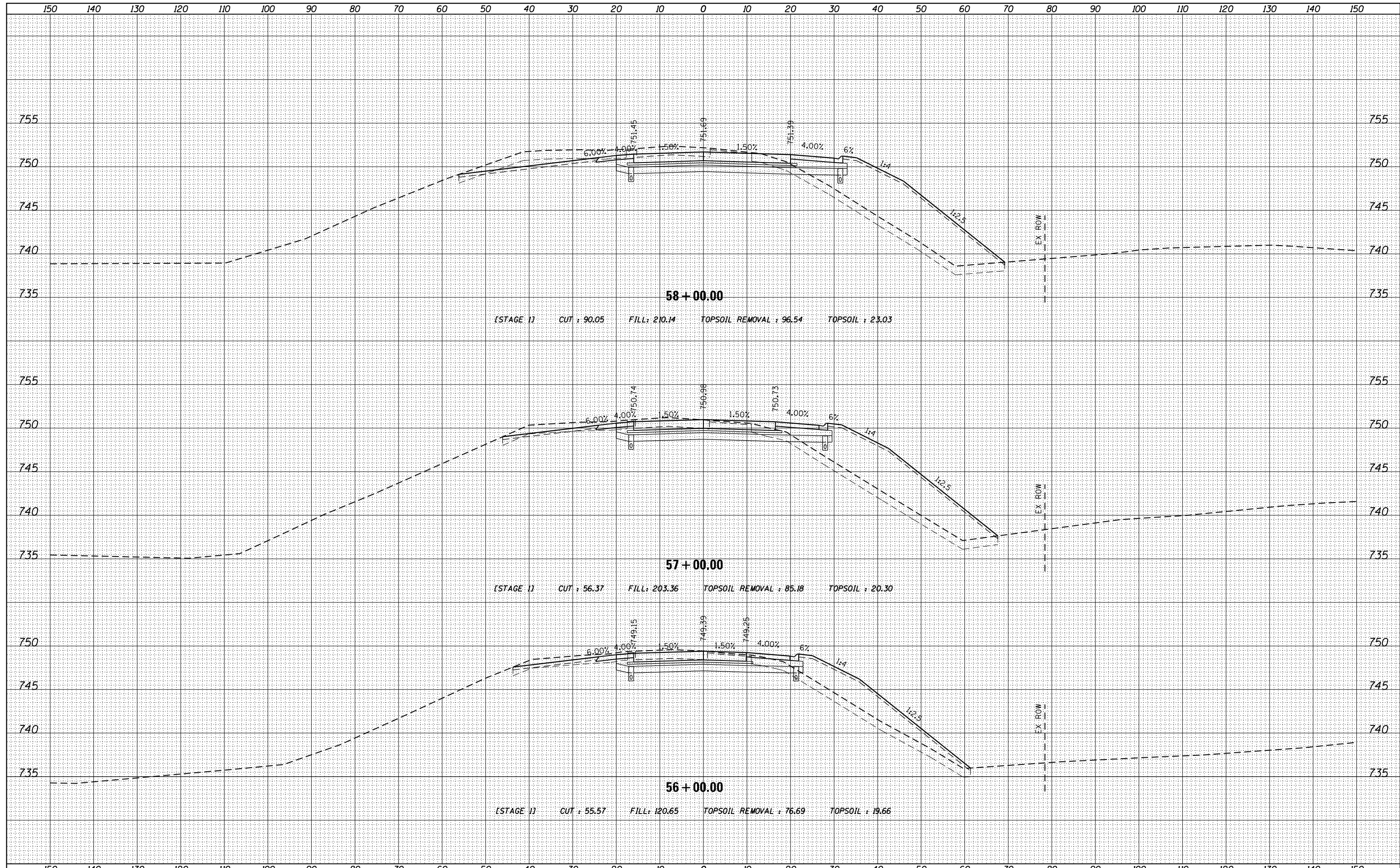


DATE	
BY	
SURVEYED	
PLOTTED	
TEMPLATE	
AREAS	
CHECKED	
FINAL SURVEY	
NOTE BOOK	
NO.	

DATE	
BY	
SURVEYED	
PLOTTED	
TEMPLATE	
AREAS	
CHECKED	
ORIGINAL SURVEY	
NOTE BOOK	
NO.	



FILE NAME = DI60L77-SHT-XSC_P_173EX.dgn

USER NAME = default	DESIGNED -	REVISD -
	DRAWN -	REVISD -
PLOT SCALE = H=1"=10' V=1"=5'	CHECKED -	REVISD -
PLOT DATE = 6/20/2012	DATE -	REVISD -

**STATE OF ILLINOIS
DEPARTMENT OF TRANSPORTATION**

**CROSS SECTIONS
IL-173 - RAMP B**

SCALE: $\frac{H}{V} = \frac{1''}{10'}$ SHEET 89 OF 110 SHEETS STA. 56+00.00 TO STA. 58+00.00

F.A. RTE.	SECTION	COUNTY	TOTAL SHEETS	SHEET NO.
94	49-1-R-1	LAKE	677	594
				CONTRACT NO. 60L77
ILLINOIS FED. AID PROJECT				