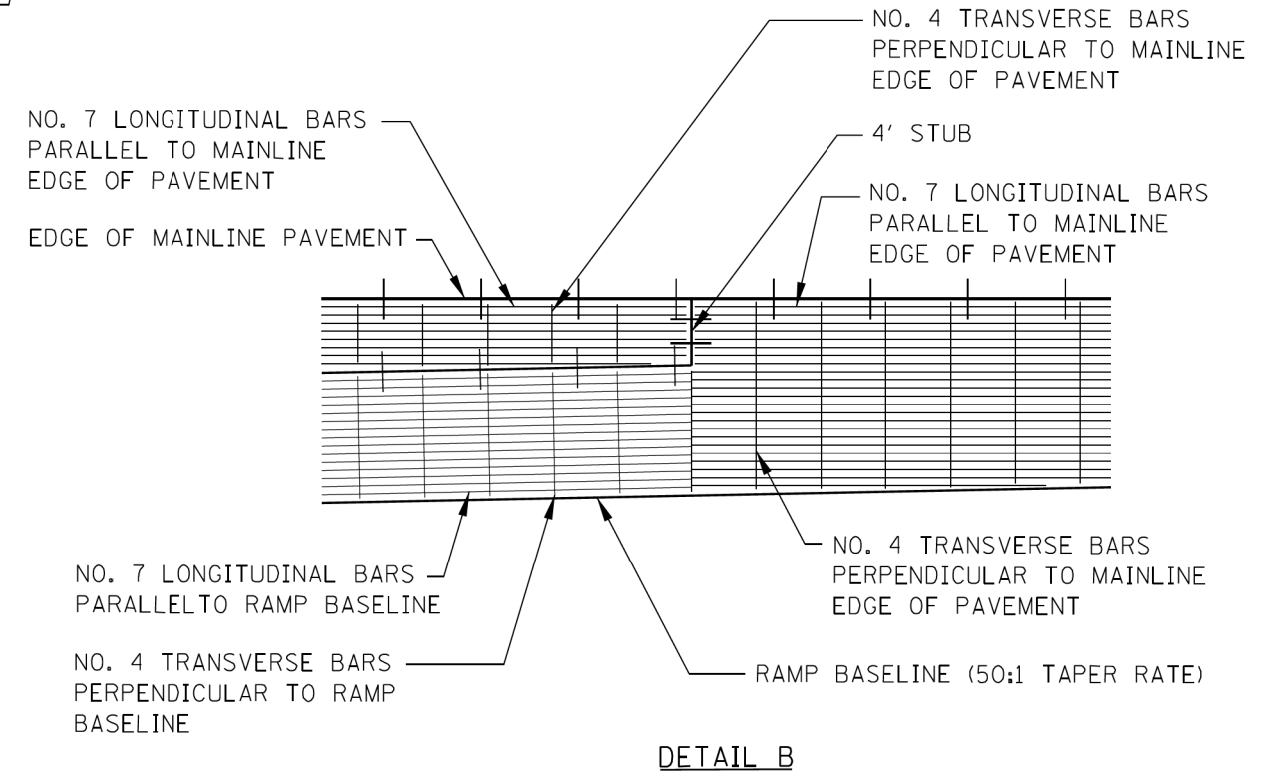


NOTES:

1. ALL PAVEMENT JOINTS SHALL BE DETAILED AS SHOWN ON I.D.O.T. HWY. STANDARD 420001, EXCEPT EXPANSION JOINT SEALS SHALL BE AS DESCRIBED IN THE SPECIAL PROVISION, BONDED PREFORMED JOINT SEALER.
2. THE THICKNESS OF THE JOINTED RAMP PAVEMENT IN THE TANGENT AREA SHALL MATCH THE MAINLINE PAVEMENT. THE EXTRA THICKNESS OF PAVEMENT SHALL BE INCLUDED IN THE PRICE FOR THE RAMP PAVEMENT.
3. SEE STANDARD A12 (BAR REINFORCEMENT FOR CRC PAVEMENT) FOR DETAILS OF PAVEMENT REINFORCEMENT.
4. TYPICAL PCC PAVEMENT JOINT SPACING SHALL BE 15 FEET.
5. AS ADDITIONAL RAMP LANES ARE ADDED, THE MAXIMUM JOINT SPACING SHALL BE 15' LONG BY 15' WIDE. TYPICAL JOINT SPACING IS 15' LONG BY 12' WIDE. LONGITUDINAL JOINT LOCATIONS IN THE WHEEL PATH SHALL BE MINIMIZED.



APPROVED *Jeff Haley* CHIEF ENGINEER DATE 10-15-2007

SHEET 2 OF 2

Illinois Tollway
Open Roads for a Faster Future

JOINTING PLAN
ENTRANCE RAMP TERMINAL
(JOINTED PCC RAMP PAVEMENT ADJACENT
TO JOINTED CRC MAINLINE PAVEMENT)

STANDARD A14-00

BOWMAN, BARRETT & ASSOCIATES INC.
CONSULTING ENGINEERS
Chicago, Illinois
312.228.0100
www.bbandainc.com

FILE NAME = \$FILES\$	USER NAME = default	DESIGNED -	REVISED -
		DRAWN -	REVISED -
	PLOT SCALE = H=1"=10' V=1"=5'	CHECKED - RGR	REVISED -
	PLOT DATE = 6/18/2012	DATE - 6/19/2012	REVISED -

**STATE OF ILLINOIS
DEPARTMENT OF TRANSPORTATION**

TOLLWAY STANDARD DRAWING

SCALE: SHEET NO. N/A OF N/A SHEETS STA. TO STA.

F.A. RTE.	SECTION	COUNTY	TOTAL SHEETS	SHEET NO.
94	49-1-R-1	LAKE	677	608
CONTRACT NO. 60L77				
ILLINOIS FED. AID PROJECT				

S:\1101\95\CADD\60L77 IL 173\60L77 Sheets\0160L77-sh2-15114.dgn